

# Anti-Protein kinase D1 Recombinant Rabbit Monoclonal Antibody



**Catalog #: 1813**

## Aliases

PRKD1; Protein Kinase D1; PKD; PRKCM; PKCM; Serine/Threonine-Protein Kinase D1; Protein Kinase C Mu Type; Protein Kinase C, Mu; Protein Kinase D; EC 2.7.11.13; NPKC-D1; NPKC-Mu; PKC-MU; EC 2.7.11; PKC-Mu; CHDED; PKD1

## Background

Gene Name: PRKD1

NCBI Gene Entry: [5587](#)

UniProt Entry: [Q15139](#)

## Application Information

Molecular Weight: Predicted, 102 kDa; observed, 102 kDa

Clonality: Rabbit monoclonal antibody

Clone ID: 23GB4590

Species Reactivity: Human, mouse, rat

Applications Tested: Western blotting (WB), flow cytometry (FCM), immunocytochemistry (IC)

## Immunogen

A synthesized peptide derived from human PKC mu

## Isotype

Rabbit IgG

## Storage Buffer

Supplied in PBS (pH 7.4) containing 50% glycerol, and 0.02% sodium azide.

## Storage

Store at -20 °C for one year.

## Recommended Dilutions

Western Blotting (WB): 1:1,000-1:5,000

Flow Cytometry (FCM): 1:2,000

Immunocytochemistry (IC): 1:100-1:1,000

**Note:** This product is for research use only.

---

### SUPPORT

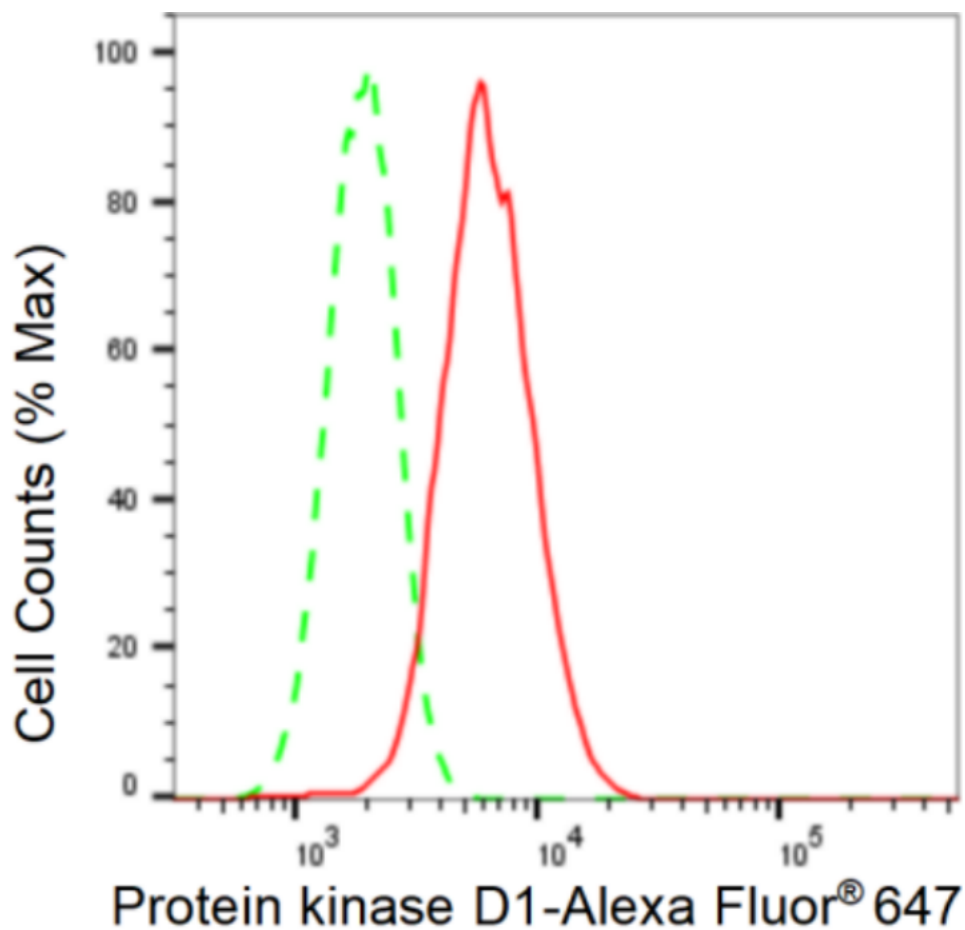
SUPPORT@GENUINBIOTECH.COM  
TEL: +1-540-855-7041

### ORDERS

SALES@GENUINBIOTECH.COM  
FAX: +1-540-855-7041

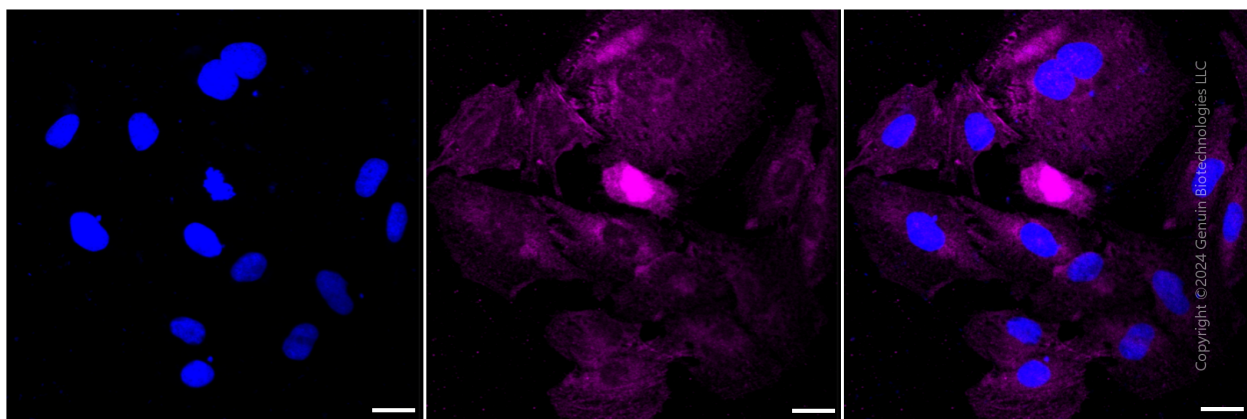
[WWW.GENUINBIOTECH.COM](http://WWW.GENUINBIOTECH.COM)

**Validation Data**



Copyright ©2024 Genuin Biotechnologies LLC

Flow cytometric analysis of Protein kinase D1 expression in H9c2 cells using Protein kinase D1 antibody (Cat#1813, 1:2,000). Green, isotype control; red, Protein kinase D1.



Copyright ©2024 Genuin Biotechnologies LLC

Immunocytochemical staining of H9C2 cells with Protein kinase D1 antibody (Cat#1813, 1:1,000). Nuclei were stained blue with DAPI; Protein kinase D1 was stained magenta with Alexa Fluor® 647. Images were taken using Leica stellaris 5. Protein abundance based on laser Intensity and smart gain: Medium. Scale bar: 20  $\mu$ m.

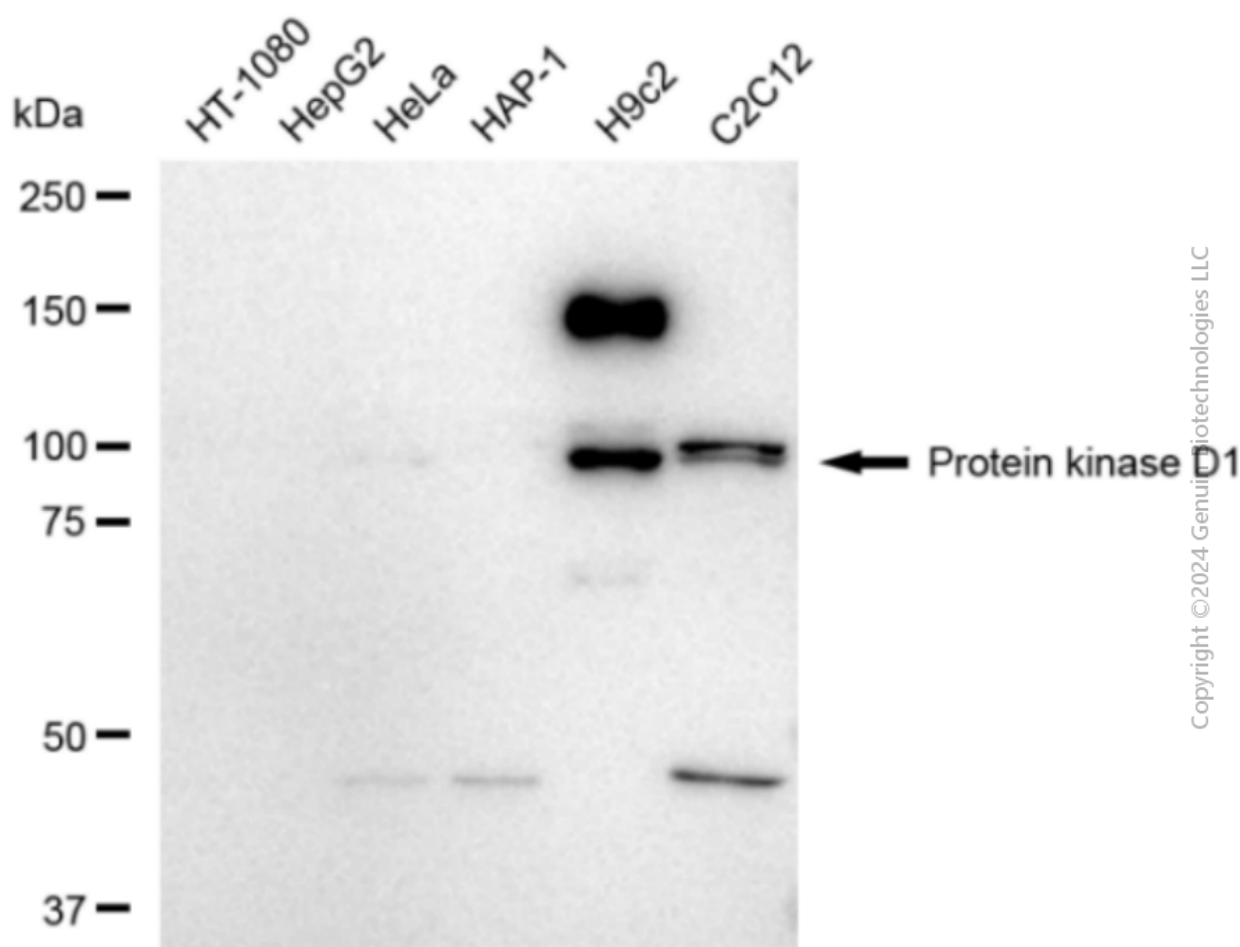
**SUPPORT**

SUPPORT@GENUINBIOTECH.COM  
TEL: +1-540-855-7041

**ORDERS**

SALES@GENUINBIOTECH.COM  
FAX: +1-540-855-7041

**WWW.GENUINBIOTECH.COM**



Western blotting analysis using anti-Protein kinase D1 antibody (Cat#1813). Total cell lysates (30  $\mu$ g) from various cell lines were loaded and separated by SDS-PAGE. The blot was incubated with anti-Protein kinase D1 antibody (Cat#1813, 1:5,000) and HRP-conjugated goat anti-rabbit secondary antibody (Cat#201, 1:20,000) respectively. Image was developed using FeQ™ ECL Substrate Kit (Cat#226).