

Anti-SKP2 Recombinant Rabbit Monoclonal Antibody



Catalog #: 1819

Aliases

SKP2; S-Phase Kinase Associated Protein 2; FBXL1; FBL1; P45; S-Phase Kinase-Associated Protein 2, E3 Ubiquitin Protein Ligase; S-Phase Kinase-Associated Protein 2; F-Box/LRR-Repeat Protein 1; P45skp2; S-Phase Kinase-Associated Protein 2 (P45); CDK2/Cyclin A-Associated Protein P45; Cyclin-A/CDK2-Associated Protein P45; F-Box Protein Skp2; FLB1

Background

Gene Name: SKP2

NCBI Gene Entry: [6502](#)

UniProt Entry: [Q13309](#)

Application Information

Molecular Weight: Predicted, 48 kDa; observed, 48 kDa

Clonality: Rabbit monoclonal antibody

Clone ID: 23GB4615

Species Reactivity: Human, mouse, rat

Applications Tested: Western blotting (WB), flow cytometry (FCM), immunocytochemistry (IC)

Immunogen

A synthesized peptide derived from human SKP2

Isotype

Rabbit IgG

Storage Buffer

Supplied in PBS (pH 7.4) containing 50% glycerol, and 0.02% sodium azide.

Storage

Store at -20 °C for one year.

Recommended Dilutions

Western Blotting (WB): 1:1,000-1:5,000

Flow Cytometry (FCM): 1:2,000

Immunocytochemistry (IC): 1:100-1:1,000

SUPPORT

SUPPORT@GENUINBIOTECH.COM
TEL: +1-540-855-7041

ORDERS

SALES@GENUINBIOTECH.COM
FAX: +1-540-855-7041

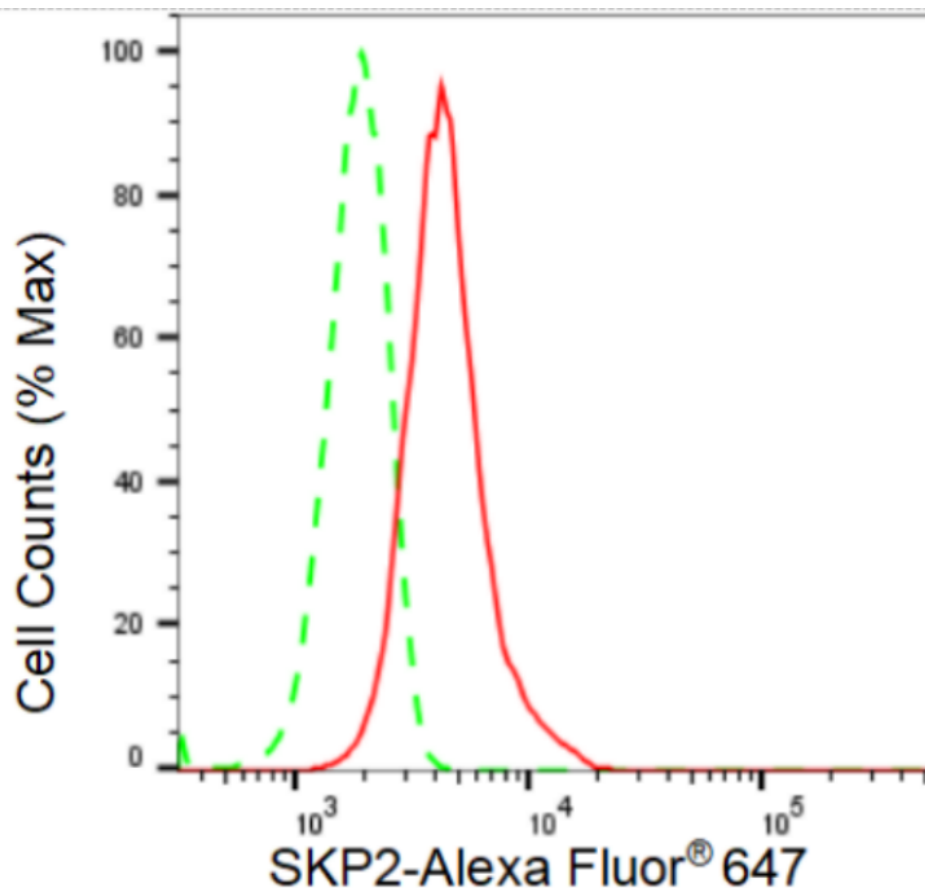
WWW.GENUINBIOTECH.COM

Anti-SKP2 Recombinant Rabbit Monoclonal Antibody

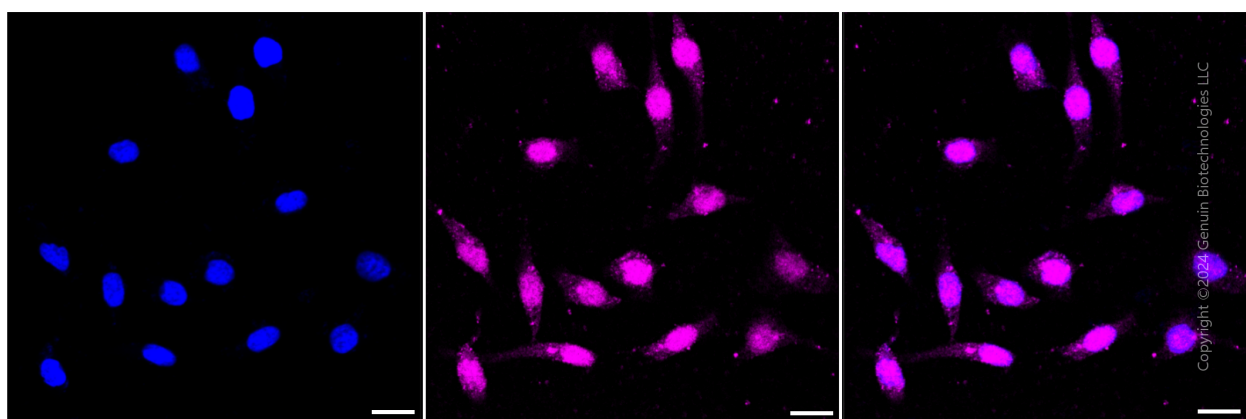
PAGE 2

Note: This product is for research use only.

Validation Data



Flow cytometric analysis of SKP2 expression in HeLa cells using SKP2 antibody (Cat#1819, 1:2,000). Green, isotype control; red, SKP2.



Immunocytochemical staining of HeLa cells with SKP2 antibody (Cat#1819, 1:1,000). Nuclei were stained blue with DAPI; SKP2 was stained magenta with Alexa Fluor® 647. Images were taken using Leica stellaris 5. Protein abundance based on laser Intensity and smart gain: Medium.

SUPPORT

SUPPORT@GENUINBIOTECH.COM
TEL: +1-540-855-7041

ORDERS

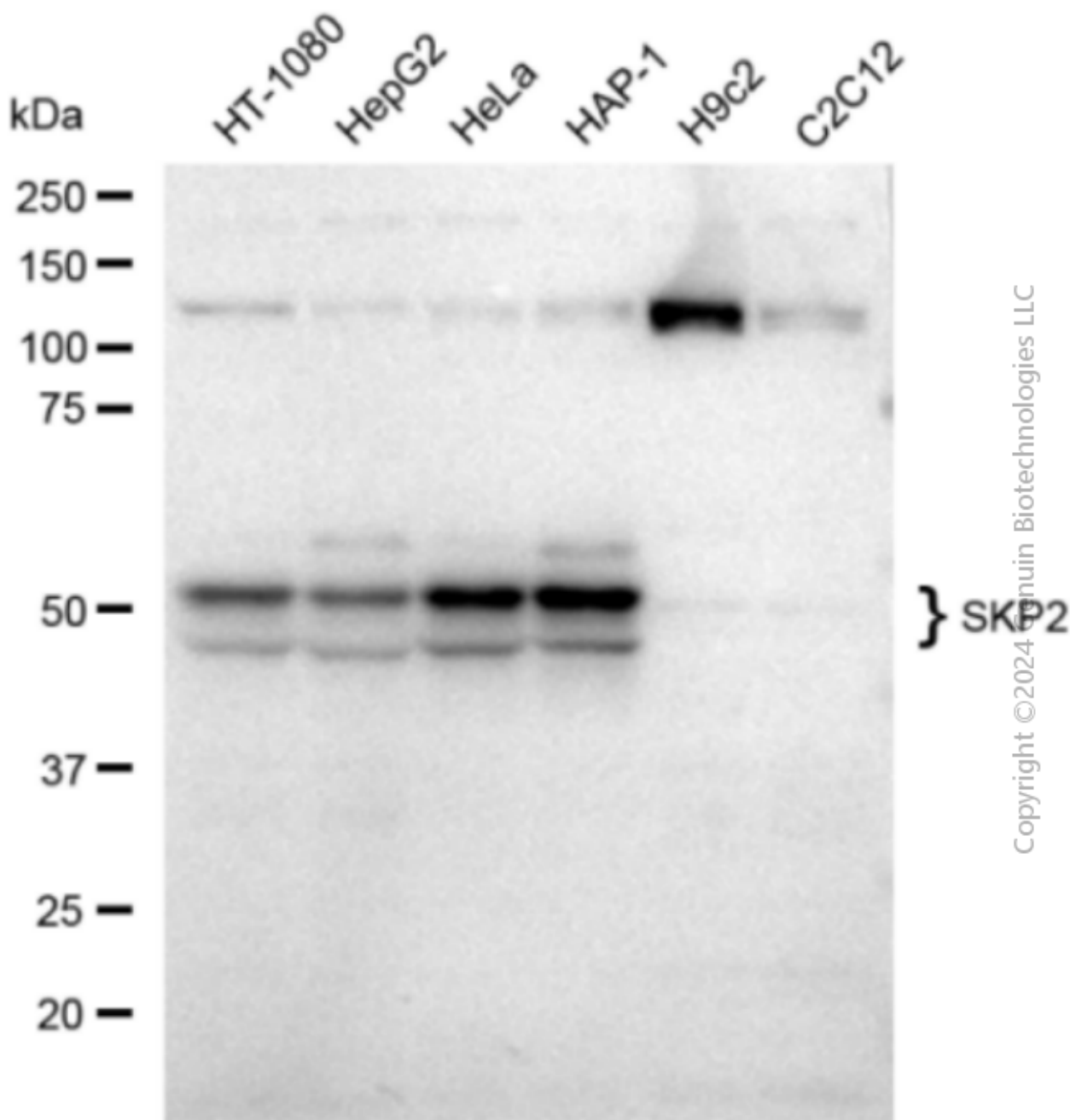
SALES@GENUINBIOTECH.COM
FAX: +1-540-855-7041

WWW.GENUINBIOTECH.COM

Anti-SKP2 Recombinant Rabbit Monoclonal Antibody

PAGE 3

Scale bar: 20 μ m.



Copyright © 2024 Genuin Biotechnologies LLC

Western blotting analysis using anti-SKP2 antibody (Cat#1819). Total cell lysates (30 μ g) from various cell lines were loaded and separated by SDS-PAGE. The blot was incubated with anti-SKP2 antibody (Cat#1819, 1:5,000) and HRP-conjugated goat anti-rabbit secondary antibody (Cat#201, 1:20,000) respectively. Image was developed using FeQ™ ECL Substrate Kit (Cat#226).

SUPPORT

SUPPORT@GENUINBIOTECH.COM
TEL: +1-540-855-7041

ORDERS

SALES@GENUINBIOTECH.COM
FAX: +1-540-855-7041

WWW.GENUINBIOTECH.COM