

# Anti-SLC2A3 Recombinant Rabbit Monoclonal Antibody



**Catalog #: 1820**

## Aliases

SLC2A3; Solute Carrier Family 2 Member 3; GLUT3; Solute Carrier Family 2 (Facilitated Glucose Transporter), Member 3; Solute Carrier Family 2, Facilitated Glucose Transporter Member 3; Glucose Transporter Type 3, Brain; GLUT-3

## Background

Gene Name: SLC2A3

NCBI Gene Entry: [6515](#)

UniProt Entry: [P11169](#)

## Application Information

Molecular Weight: Predicted, 54 kDa; observed, 54 kDa

Clonality: Rabbit monoclonal antibody

Clone ID: 23GB4620

Species Reactivity: Human, mouse, rat

Applications Tested: Western blotting (WB), flow cytometry (FCM), immunocytochemistry (IC), immunohistochemistry-Paraffin (IHC-P)

## Immunogen

A synthesized peptide derived from human GLUT3

## Isotype

Rabbit IgG

## Storage Buffer

Supplied in PBS (pH 7.4) containing 50% glycerol, and 0.02% sodium azide.

## Storage

Store at -20 °C for one year.

## Recommended Dilutions

Western Blotting (WB): 1:1,000-1:5,000

Flow Cytometry (FCM): 1:2,000

Immunocytochemistry (IC): 1:100-1:1,000

Immunohistochemistry-Paraffin (IHC-P): 1:100-1:400

---

### SUPPORT

SUPPORT@GENUINBIOTECH.COM  
TEL: +1-540-855-7041

### ORDERS

SALES@GENUINBIOTECH.COM  
FAX: +1-540-855-7041

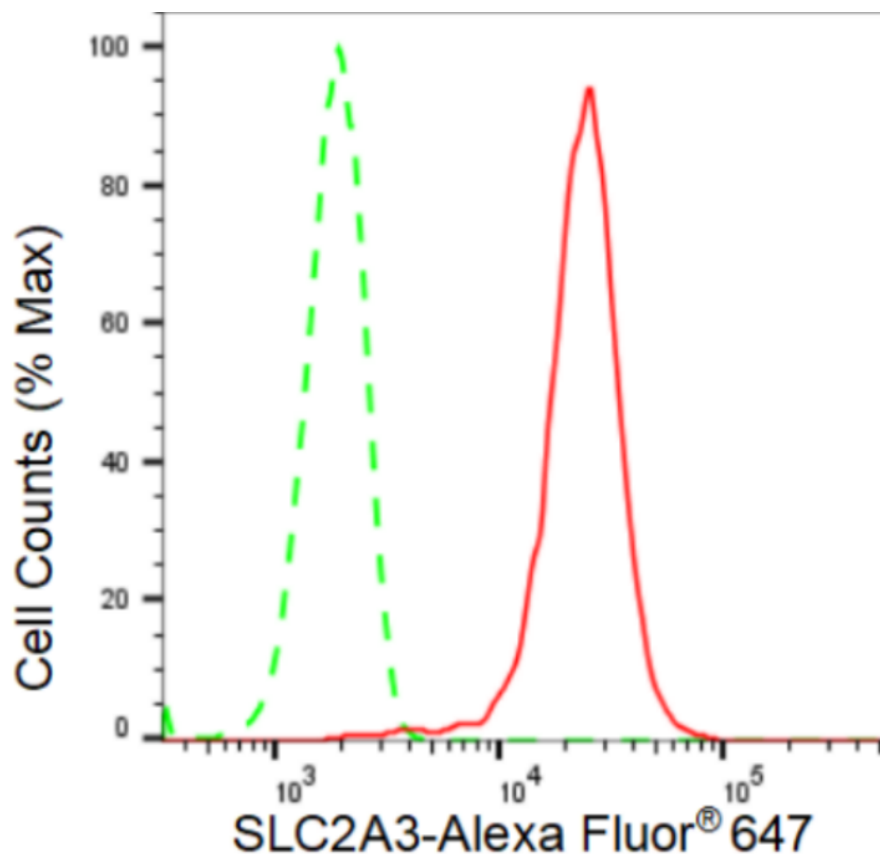
[WWW.GENUINBIOTECH.COM](http://WWW.GENUINBIOTECH.COM)

# Anti-SLC2A3 Recombinant Rabbit Monoclonal Antibody

PAGE 2

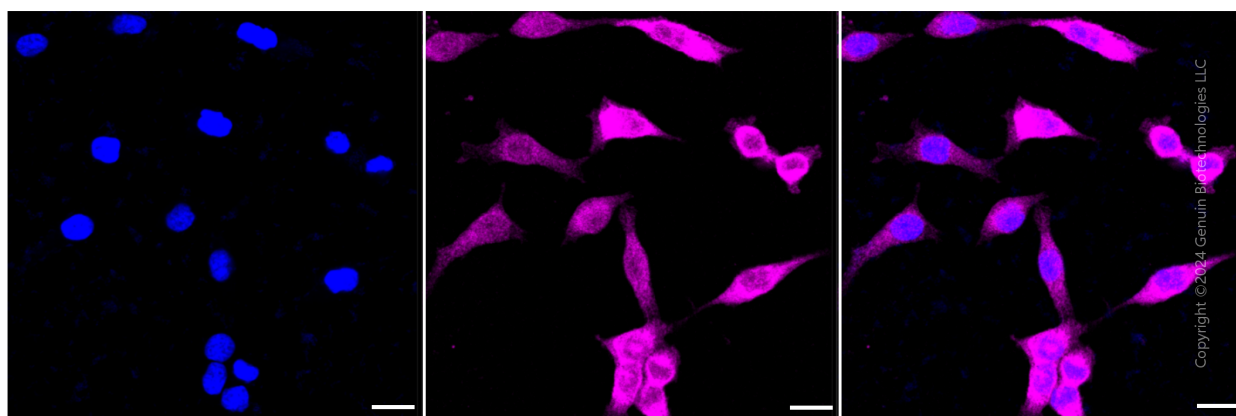
**Note:** This product is for research use only.

## Validation Data



Copyright ©2024 Genuin Biotechnologies LLC

Flow cytometric analysis of SLC2A3 expression in HeLa cells using SLC2A3 antibody (Cat#1820, 1:2,000). Green, isotype control; red, SLC2A3.



Copyright ©2024 Genuin Biotechnologies LLC

Immunocytochemical staining of HeLa cells with SLC2A3 antibody (Cat#1820, 1:1,000). Nuclei were stained blue with DAPI; SLC2A3 was stained magenta with Alexa Fluor® 647. Images were taken using Leica stellaris 5. Protein abundance based on laser Intensity and smart gain: Medium. Scale bar: 20  $\mu$ m.

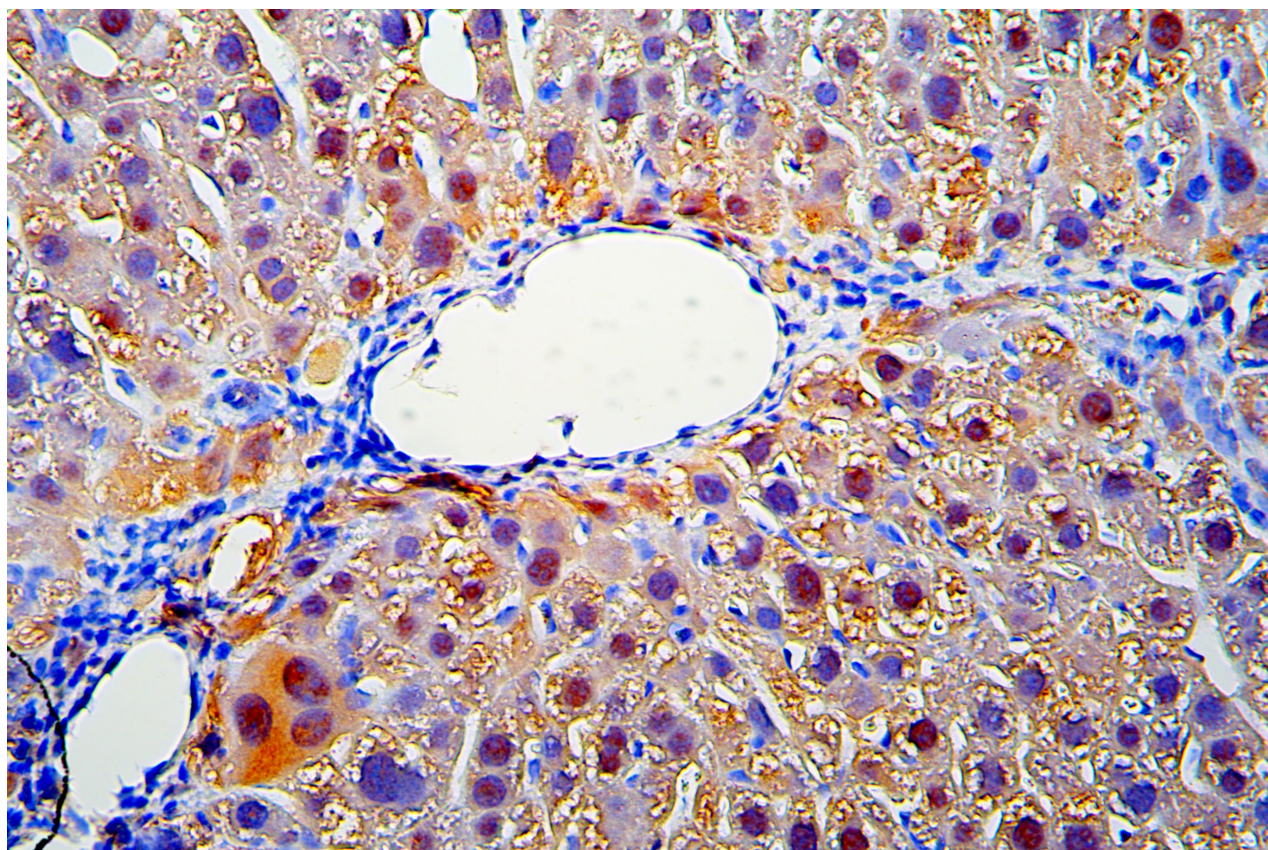
### SUPPORT

SUPPORT@GENUINBIOTECH.COM  
TEL: +1-540-855-7041

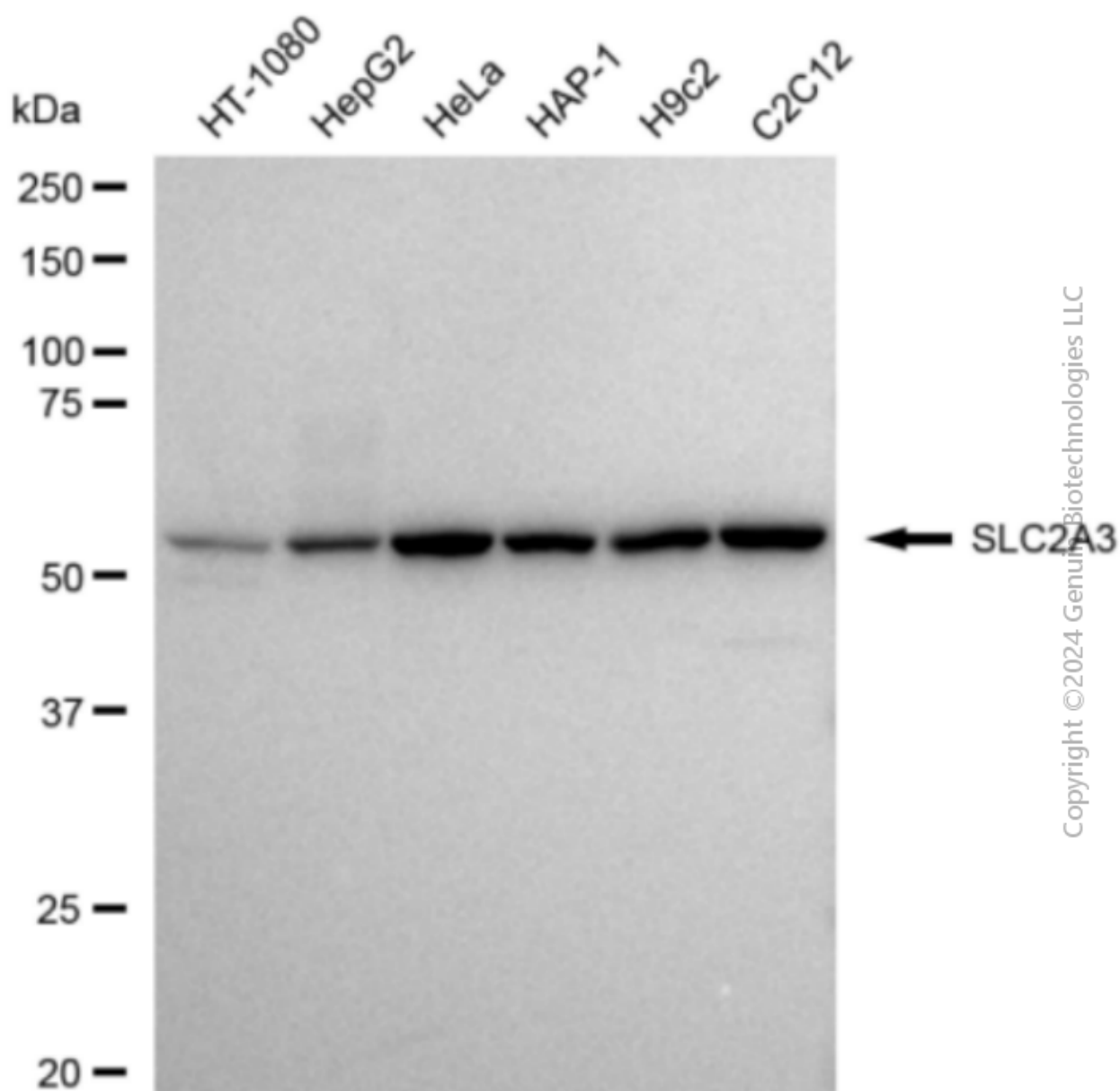
### ORDERS

SALES@GENUINBIOTECH.COM  
FAX: +1-540-855-7041

[WWW.GENUINBIOTECH.COM](http://WWW.GENUINBIOTECH.COM)



Immunohistochemical staining of mouse liver tissue with anti-SLC2A3 antibody (Cat#1820, 1:400). Cytoplasm and nuclei were stained with DAB; SLC2A3 was incubated at 37 °C and detected using HRP-conjugated goat anti-rabbit secondary antibody (Cat#201, 1:20,000). DAB was used as the chromogen.



Copyright © 2024 Genuin Biotechnologies LLC

Western blotting analysis using anti-SLC2A3 antibody (Cat#1820). Total cell lysates (30 µg) from various cell lines were loaded and separated by SDS-PAGE. The blot was incubated with anti-SLC2A3 antibody (Cat#1820, 1:5,000) and HRP-conjugated goat anti-rabbit secondary antibody (Cat#201, 1:20,000) respectively. Image was developed using FeQ™ ECL Substrate Kit (Cat#226).

## SUPPORT

SUPPORT@GENUINBIOTECH.COM  
TEL: +1-540-855-7041

## ORDERS

SALES@GENUINBIOTECH.COM  
FAX: +1-540-855-7041

[WWW.GENUINBIOTECH.COM](http://WWW.GENUINBIOTECH.COM)