

Anti-SLC16A1 Recombinant Rabbit Monoclonal Antibody



Catalog #: 1822

Aliases

SLC16A1; Solute Carrier Family 16 Member 1; MCT1; Monocarboxylate Transporter 1; MCT; Solute Carrier Family 16, Member 1 (Monocarboxylic Acid Transporter 1); Solute Carrier Family 16 (Monocarboxylic Acid Transporters), Member 1; Solute Carrier Family 16 (Monocarboxylate Transporter), Member 1; MCT 1; MCT1D; HHF7

Background

Gene Name: SLC16A1

NCBI Gene Entry: [6566](#)

UniProt Entry: [P53985](#)

Application Information

Molecular Weight: Predicted, 54 kDa; observed, 54 kDa

Clonality: Rabbit monoclonal antibody

Clone ID: 23GB4630

Species Reactivity: Human

Applications Tested: Western blotting (WB), flow cytometry (FCM), immunocytochemistry (IC)

Immunogen

A synthesized peptide derived from human Monocarboxylic acid transporter1

Isotype

Rabbit IgG

Storage Buffer

Supplied in PBS (pH 7.4) containing 50% glycerol, and 0.02% sodium azide.

Storage

Store at -20 °C for one year.

Recommended Dilutions

Western Blotting (WB): 1:1,000-1:5,000

Flow Cytometry (FCM): 1:2,000

Immunocytochemistry (IC): 1:100-1:1,000

SUPPORT

SUPPORT@GENUINBIOTECH.COM
TEL: +1-540-855-7041

ORDERS

SALES@GENUINBIOTECH.COM
FAX: +1-540-855-7041

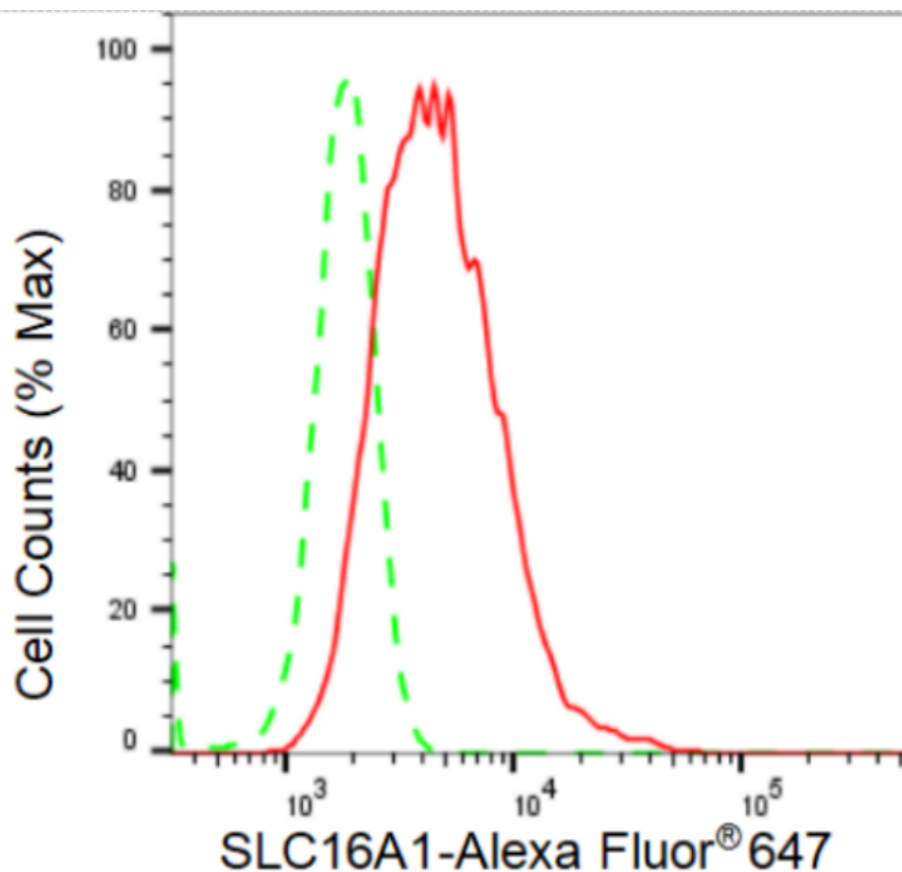
WWW.GENUINBIOTECH.COM

Anti-SLC16A1 Recombinant Rabbit Monoclonal Antibody

PAGE 2

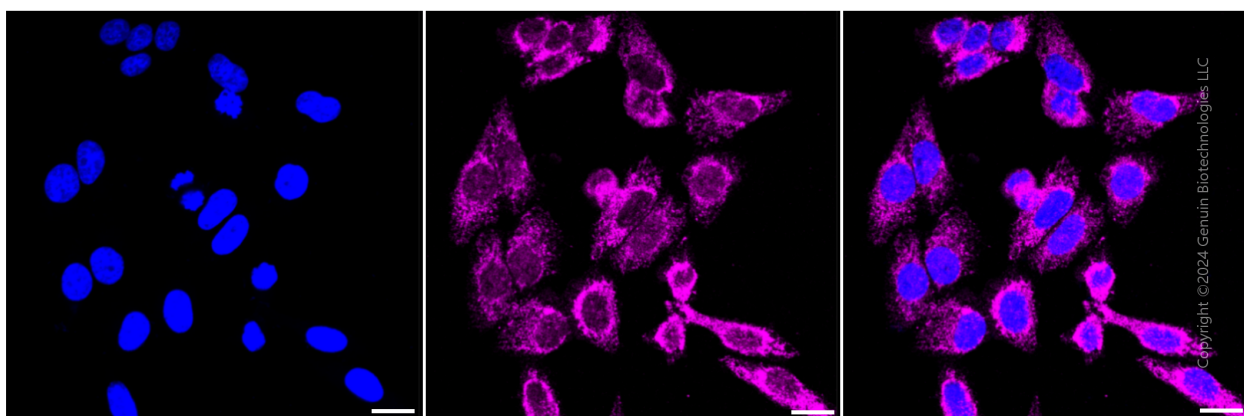
Note: This product is for research use only.

Validation Data



Copyright ©2024 Genuin Biotechnologies LLC

Flow cytometric analysis of SLC16A1 expression in HepG2 cells using SLC16A1 antibody (Cat#1822, 1:2,000). Green, isotype control; red, SLC16A1.



Immunocytochemical staining of HepG2 cells with SLC16A1 antibody (Cat#1822, 1:1,000). Nuclei were stained blue with DAPI; SLC16A1 was stained magenta with Alexa Fluor® 647. Images were taken using Leica stellaris 5. Protein abundance based on laser Intensity and smart

SUPPORT

SUPPORT@GENUINBIOTECH.COM
TEL: +1-540-855-7041

ORDERS

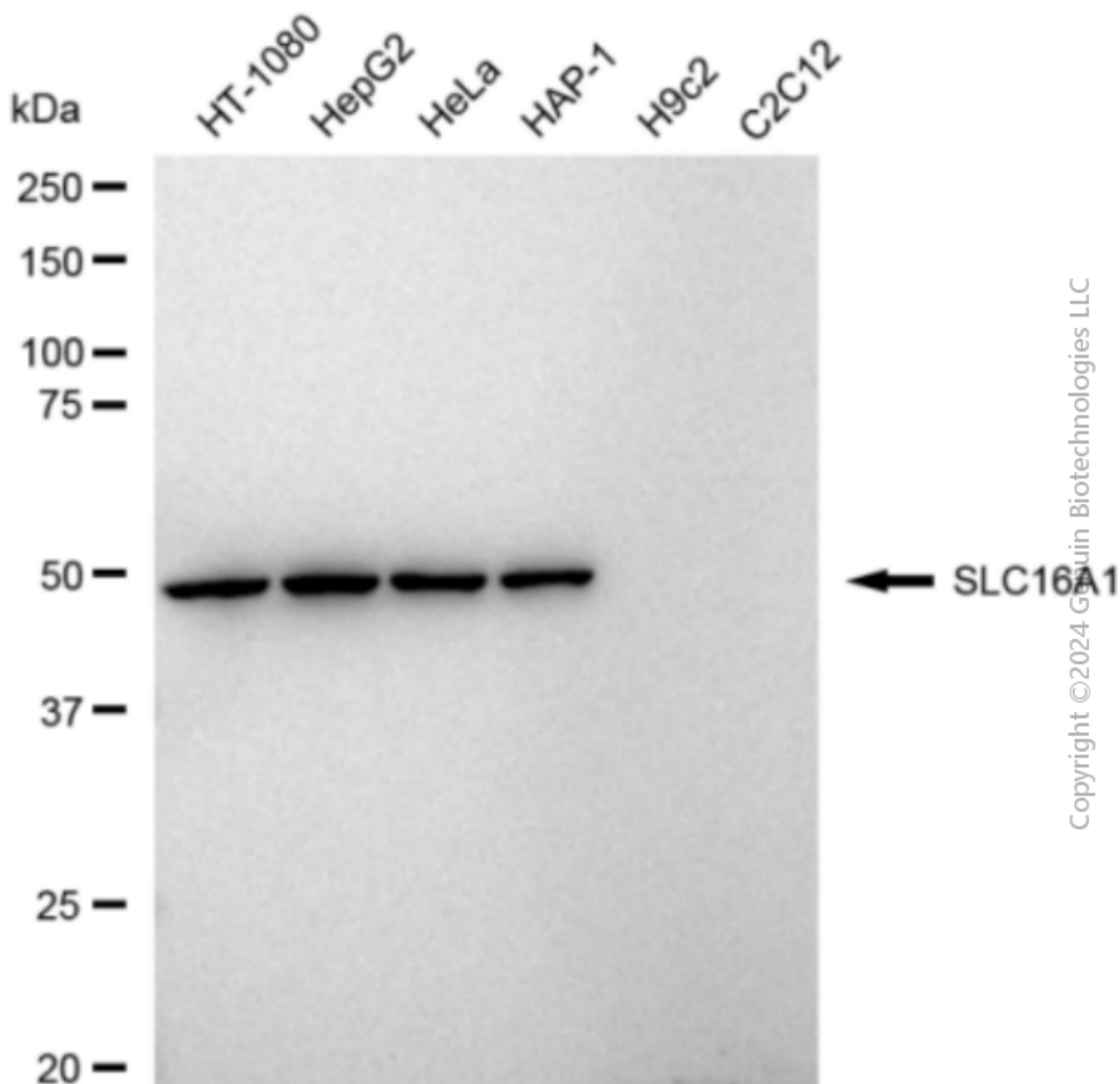
SALES@GENUINBIOTECH.COM
FAX: +1-540-855-7041

WWW.GENUINBIOTECH.COM

Anti-SLC16A1 Recombinant Rabbit Monoclonal Antibody

PAGE 3

gain: Medium. Scale bar: 20 μ m.



Copyright © 2024 Genuin Biotechnologies LLC

Western blotting analysis using anti-SLC16A1 antibody (Cat#1822). Total cell lysates (30 μ g) from various cell lines were loaded and separated by SDS-PAGE. The blot was incubated with anti-SLC16A1 antibody (Cat#1822, 1:5,000) and HRP-conjugated goat anti-rabbit secondary antibody (Cat#201, 1:20,000) respectively. Image was developed using FeQ™ ECL Substrate Kit (Cat#226).

SUPPORT

SUPPORT@GENUINBIOTECH.COM
TEL: +1-540-855-7041

ORDERS

SALES@GENUINBIOTECH.COM
FAX: +1-540-855-7041

WWW.GENUINBIOTECH.COM