

# Anti-SLC31A1 Recombinant Rabbit Monoclonal Antibody



**Catalog #: 1823**

## Aliases

SLC31A1; Solute Carrier Family 31 Member 1; CTR1; HCTR1; COPT1; Solute Carrier Family 31 (Copper Transporter), Member 1; High Affinity Copper Uptake Protein 1; Copper Transporter 1; Solute Carrier Family 31 (Copper Transporters), Member 1; Copper Transport 1 Homolog; NSCT

## Background

Gene Name: SLC31A1

NCBI Gene Entry: [1317](#)

UniProt Entry: [O15431](#)

## Application Information

Molecular Weight: Predicted, 21 kDa; observed, 26-34 kDa

Clonality: Rabbit monoclonal antibody

Clone ID: 23GB4635

Species Reactivity: Human, mouse, rat

Applications Tested: Western blotting (WB), flow cytometry (FCM), immunocytochemistry (IC)

## Immunogen

A synthesized peptide derived from human CTR1/SLC31A1

## Isotype

Rabbit IgG

## Storage Buffer

Supplied in PBS (pH 7.4) containing 50% glycerol, and 0.02% sodium azide.

## Storage

Store at -20 °C for one year.

## Recommended Dilutions

Western Blotting (WB): 1:1,000-1:5,000

Flow Cytometry (FCM): 1:2,000

Immunocytochemistry (IC): 1:100-1:1,000

---

### SUPPORT

SUPPORT@GENUINBIOTECH.COM  
TEL: +1-540-855-7041

### ORDERS

SALES@GENUINBIOTECH.COM  
FAX: +1-540-855-7041

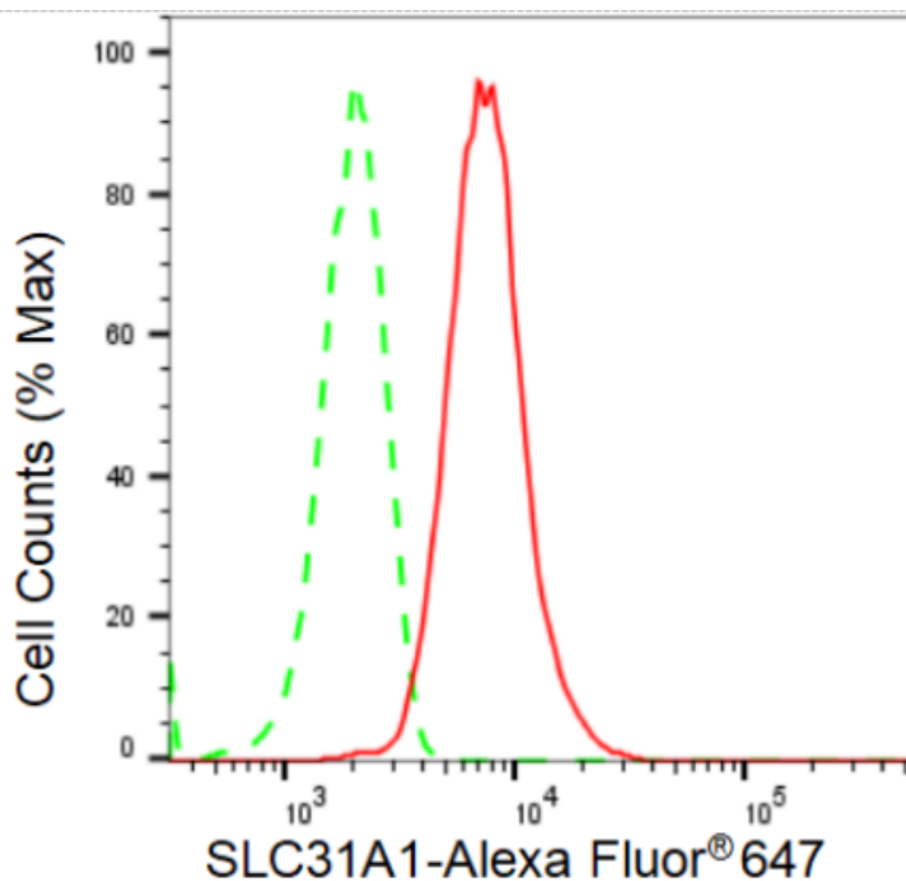
[WWW.GENUINBIOTECH.COM](http://WWW.GENUINBIOTECH.COM)

# Anti-SLC31A1 Recombinant Rabbit Monoclonal Antibody

PAGE 2

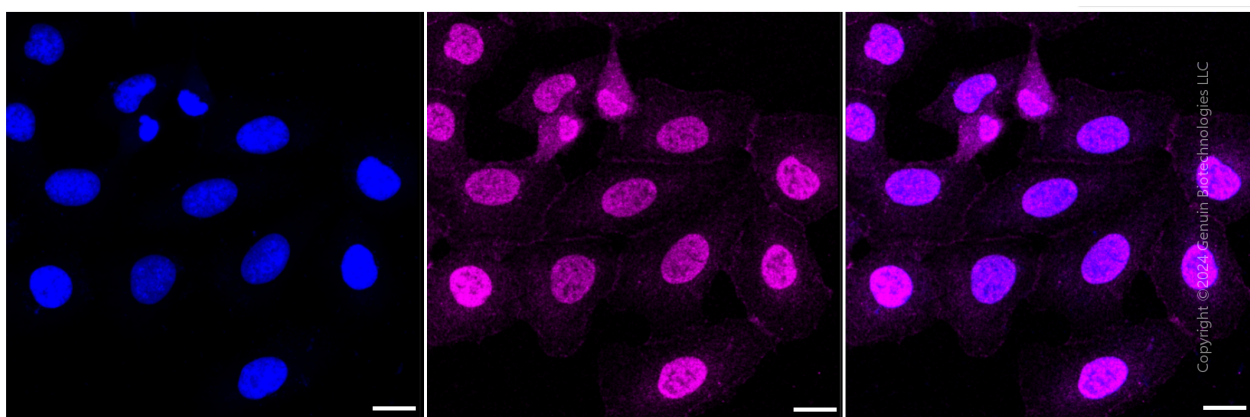
**Note:** This product is for research use only.

## Validation Data



Copyright ©2024 Genuin Biotechnologies LLC

Flow cytometric analysis of SLC31A1 expression in HT-1080 cells using SLC31A1 antibody (Cat#1823, 1:2,000). Green, isotype control; red, SLC31A1.



Copyright ©2024 Genuin Biotechnologies LLC

### SUPPORT

SUPPORT@GENUINBIOTECH.COM  
TEL: +1-540-855-7041

### ORDERS

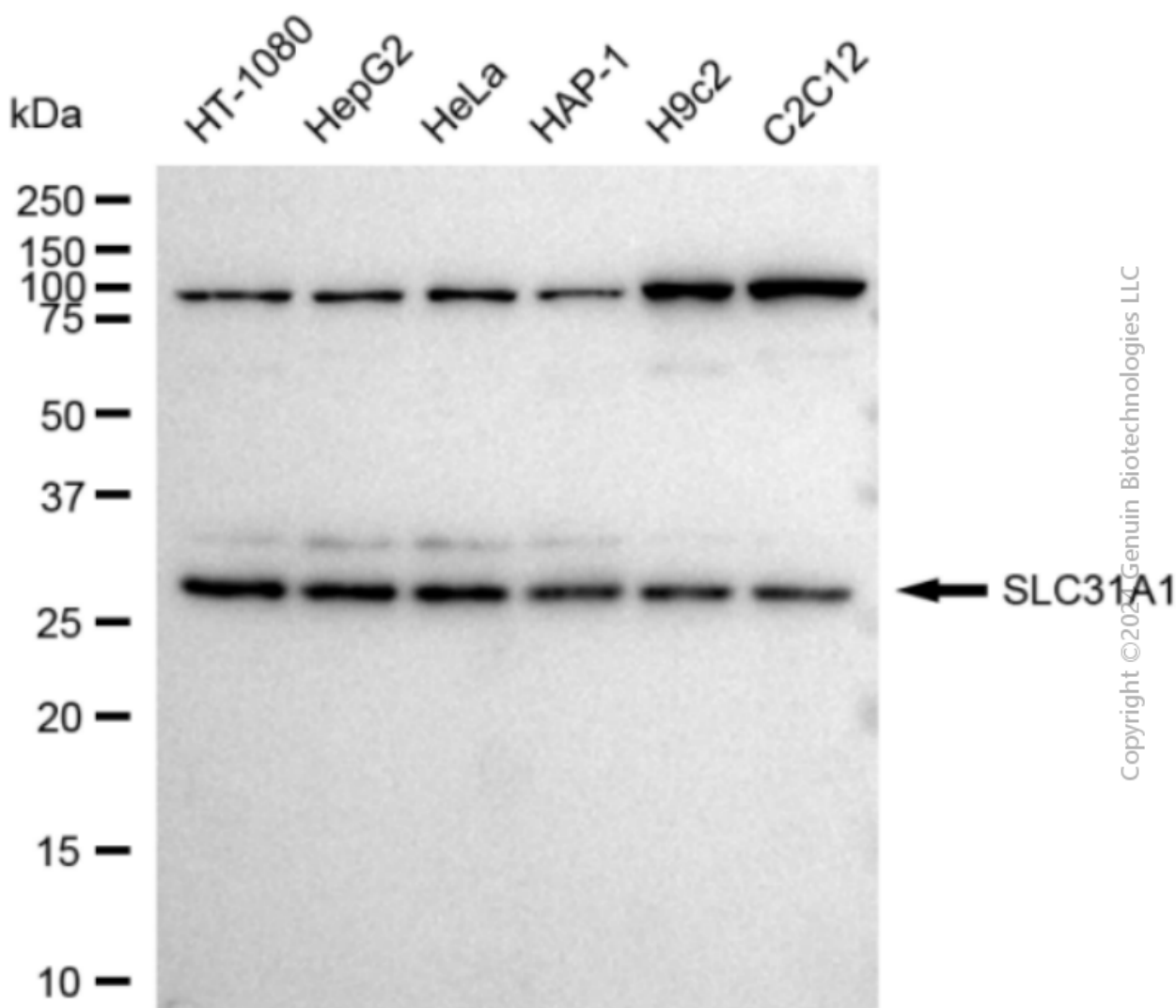
SALES@GENUINBIOTECH.COM  
FAX: +1-540-855-7041

[WWW.GENUINBIOTECH.COM](http://WWW.GENUINBIOTECH.COM)

## Anti-SLC31A1 Recombinant Rabbit Monoclonal Antibody

PAGE 3

gain: Medium. Scale bar: 20  $\mu$ m.



Western blotting analysis using anti-SLC31A1 antibody (Cat#1823). Total cell lysates (30  $\mu$ g) from various cell lines were loaded and separated by SDS-PAGE. The blot was incubated with anti-SLC31A1 antibody (Cat#1823, 1:5,000) and HRP-conjugated goat anti-rabbit secondary antibody (Cat#201, 1:20,000) respectively. Image was developed using FeQ™ ECL Substrate Kit (Cat#226).

### SUPPORT

SUPPORT@GENUINBIOTECH.COM  
TEL: +1-540-855-7041

### ORDERS

SALES@GENUINBIOTECH.COM  
FAX: +1-540-855-7041

[WWW.GENUINBIOTECH.COM](http://WWW.GENUINBIOTECH.COM)