

Anti-SOX2 Recombinant Rabbit Monoclonal Antibody



Catalog #: 1826

Aliases

SOX2; SRY-Box Transcription Factor 2; SRY (Sex Determining Region Y)-Box 2; Transcription Factor SOX-2; SRY-Box 2; Sex Determining Region Y-Box 2; SRY-Related HMG-Box Gene 2; Transcription Factor SOX2; MCOPS3; ANOP3

Background

Gene Name: SOX2

NCBI Gene Entry: [6657](#)

UniProt Entry: [P48431](#)

Application Information

Molecular Weight: Predicted, 34 kDa; observed, 34 kDa

Clonality: Rabbit monoclonal antibody

Clone ID: 23GB4645

Species Reactivity: Human

Applications Tested: Western blotting (WB), flow cytometry (FCM), immunocytochemistry (IC)

Immunogen

A synthesized peptide derived from human SOX2

Isotype

Rabbit IgG

Storage Buffer

Supplied in PBS (pH 7.4) containing 50% glycerol, and 0.02% sodium azide.

Storage

Store at -20 °C for one year.

Recommended Dilutions

Western Blotting (WB): 1:1,000-1:5,000

Flow Cytometry (FCM): 1:2,000

Immunocytochemistry (IC): 1:100-1:1,000

Note: This product is for research use only.

SUPPORT

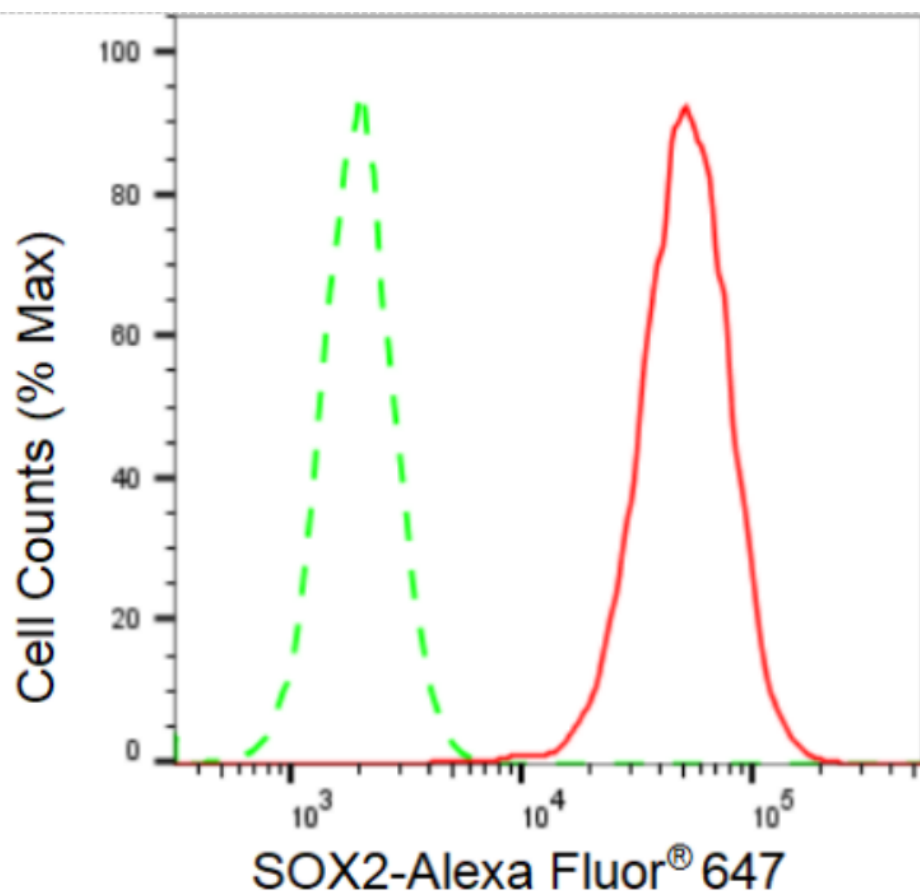
SUPPORT@GENUINBIOTECH.COM
TEL: +1-540-855-7041

ORDERS

SALES@GENUINBIOTECH.COM
FAX: +1-540-855-7041

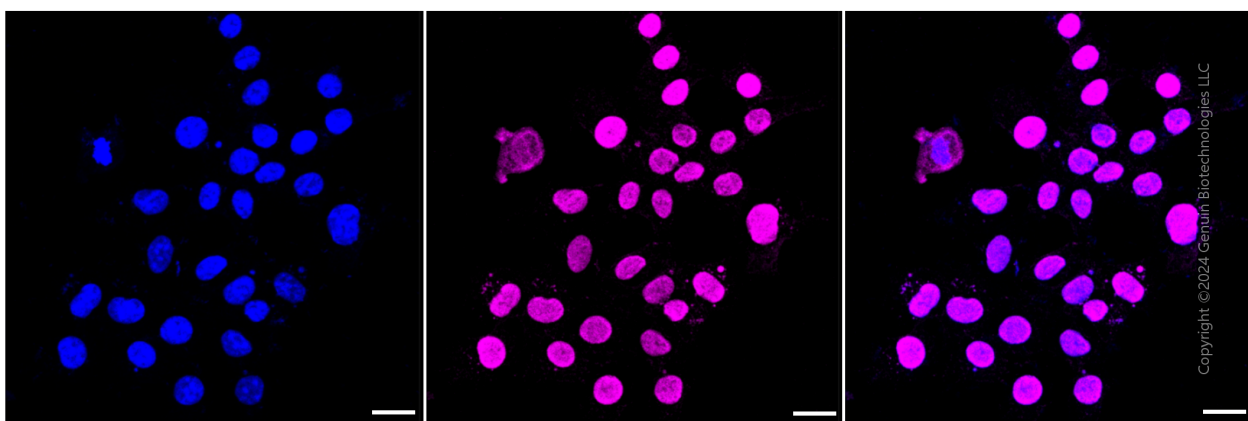
WWW.GENUINBIOTECH.COM

Validation Data



Copyright ©2024 Genuin Biotechnologies LLC

Flow cytometric analysis of SOX2 expression in HAP-1 cells using SOX2 antibody (Cat#1826, 1:2,000). Green, isotype control; red, SOX2.



Copyright ©2024 Genuin Biotechnologies LLC

Immunocytochemical staining of HAP-1 cells with SOX2 antibody (Cat#1826, 1:1,000). Nuclei were stained blue with DAPI; SOX2 was stained magenta with Alexa Fluor® 647. Images were taken using Leica stellaris 5. Protein abundance based on laser Intensity and smart gain: Medium. Scale bar: 20 µm.

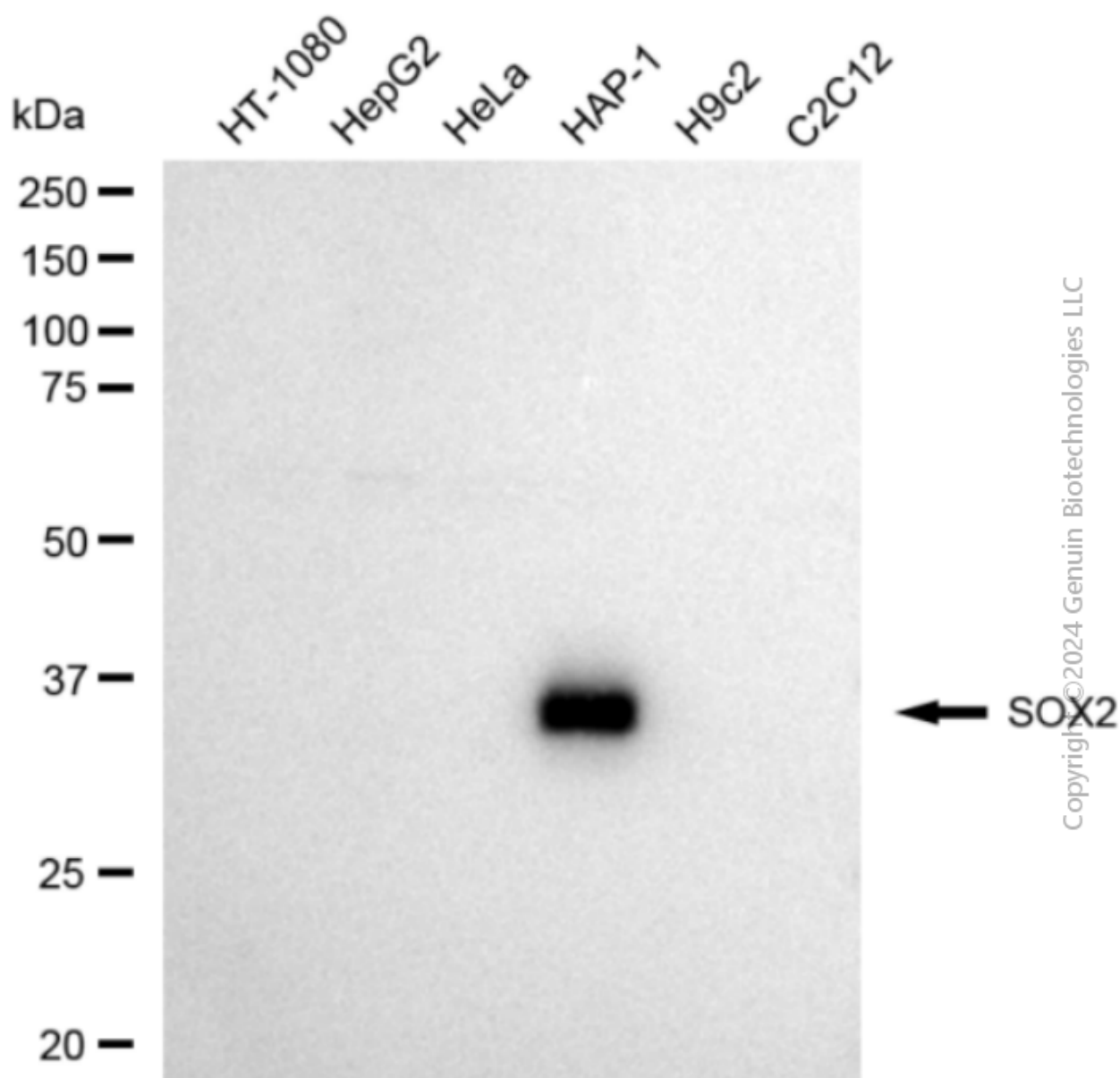
SUPPORT

SUPPORT@GENUINBIOTECH.COM
TEL: +1-540-855-7041

ORDERS

SALES@GENUINBIOTECH.COM
FAX: +1-540-855-7041

WWW.GENUINBIOTECH.COM



Western blotting analysis using anti-SOX2 antibody (Cat#1826). Total cell lysates (30 µg) from various cell lines were loaded and separated by SDS-PAGE. The blot was incubated with anti-SOX2 antibody (Cat#1826, 1:5,000) and HRP-conjugated goat anti-rabbit secondary antibody (Cat#201, 1:20,000) respectively. Image was developed using FeQ™ ECL Substrate Kit (Cat#226).