

Anti-synapsin II Recombinant Rabbit Monoclonal Antibody



Catalog #: 1829

Aliases

SYN2; Synapsin II; Synapsin-2; SYNII; SYNIIa; SYNIIb; SYNIIA; SYNIIIB

Background

Gene Name: SYN2

NCBI Gene Entry: [6854](#)

UniProt Entry: [Q92777](#)

Application Information

Molecular Weight: Predicted, 63 kDa; observed, 70 kDa

Clonality: Rabbit monoclonal antibody

Clone ID: 23GB4660

Species Reactivity: Human

Applications Tested: Western blotting (WB), flow cytometry (FCM), immunocytochemistry (IC)

Immunogen

A synthesized peptide derived from human Synapsin II

Isotype

Rabbit IgG

Storage Buffer

Supplied in PBS (pH 7.4) containing 50% glycerol, and 0.02% sodium azide.

Storage

Store at -20 °C for one year.

Recommended Dilutions

Western Blotting (WB): 1:1,000-1:5,000

Flow Cytometry (FCM): 1:2,000

Immunocytochemistry (IC): 1:100-1:1,000

Note: This product is for research use only.

Validation Data

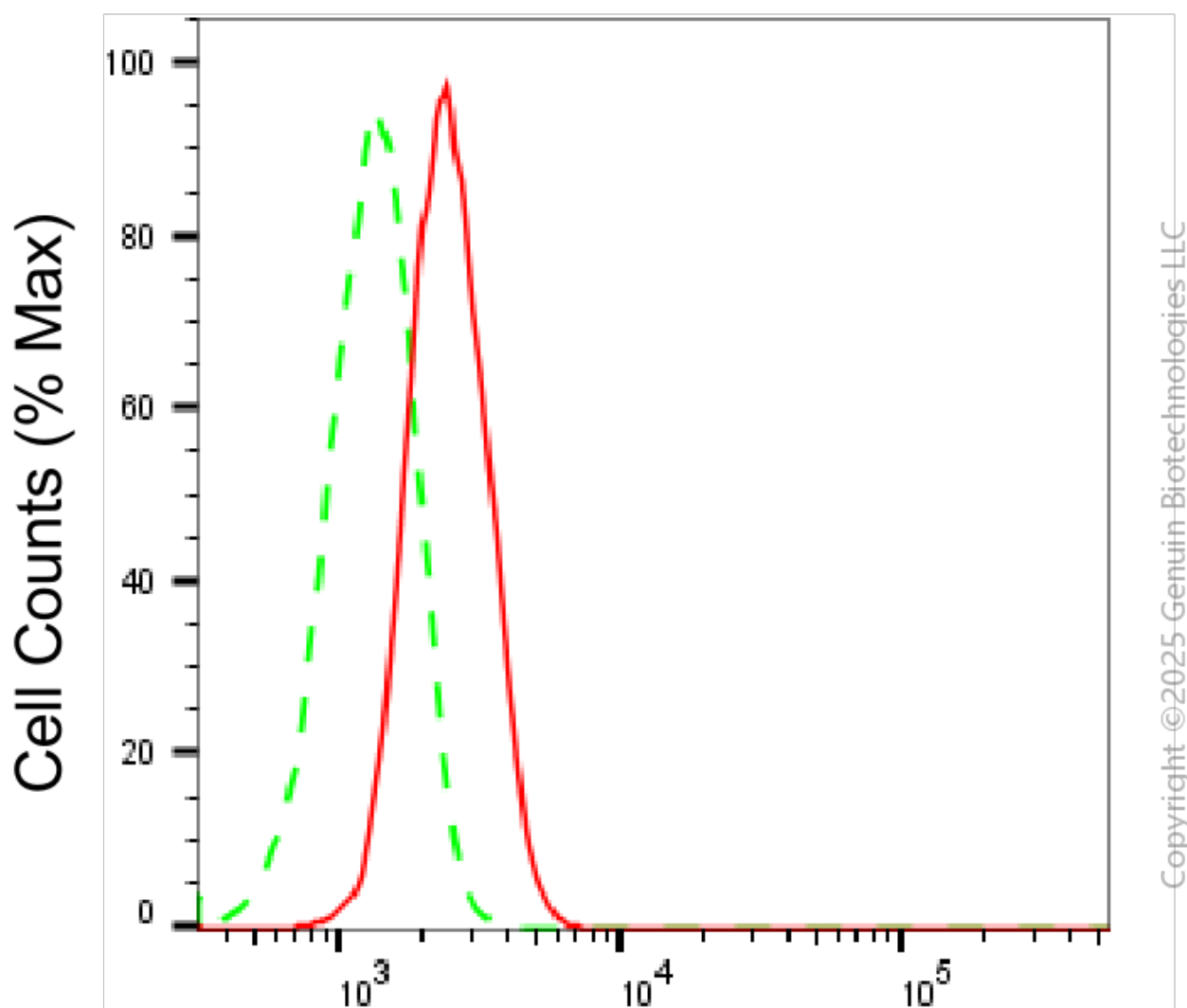
SUPPORT

SUPPORT@GENUINBIOTECH.COM
TEL: +1-540-855-7041

ORDERS

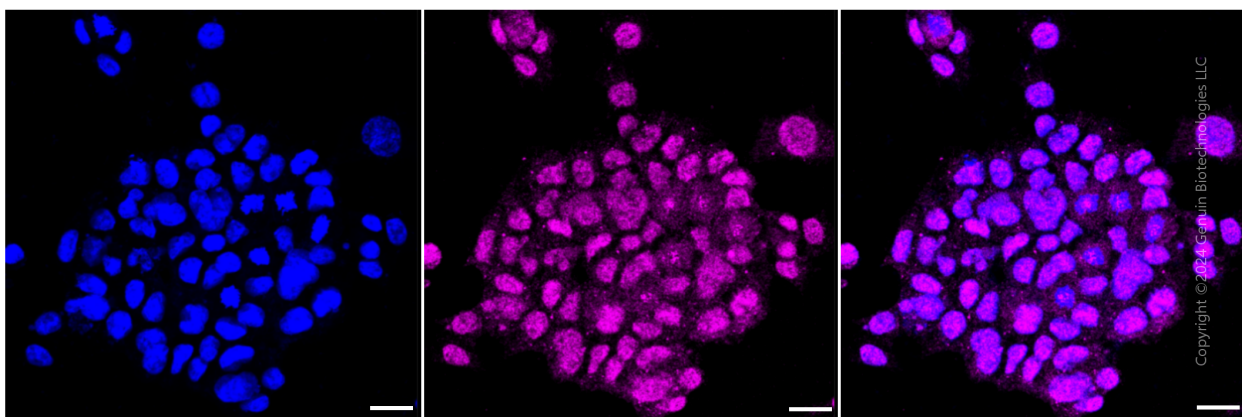
SALES@GENUINBIOTECH.COM
FAX: +1-540-855-7041

WWW.GENUINBIOTECH.COM



synapsin II-Alexa Fluor® 647

Flow cytometric analysis of synapsin II expression in HAP-1 cells using anti-synapsin II antibody (Cat#1829, 1 μ 2000). Green, isotype control; red, synapsin II.



SUPPORT

SUPPORT@GENUINBIOTECH.COM
TEL: +1-540-855-7041

ORDERS

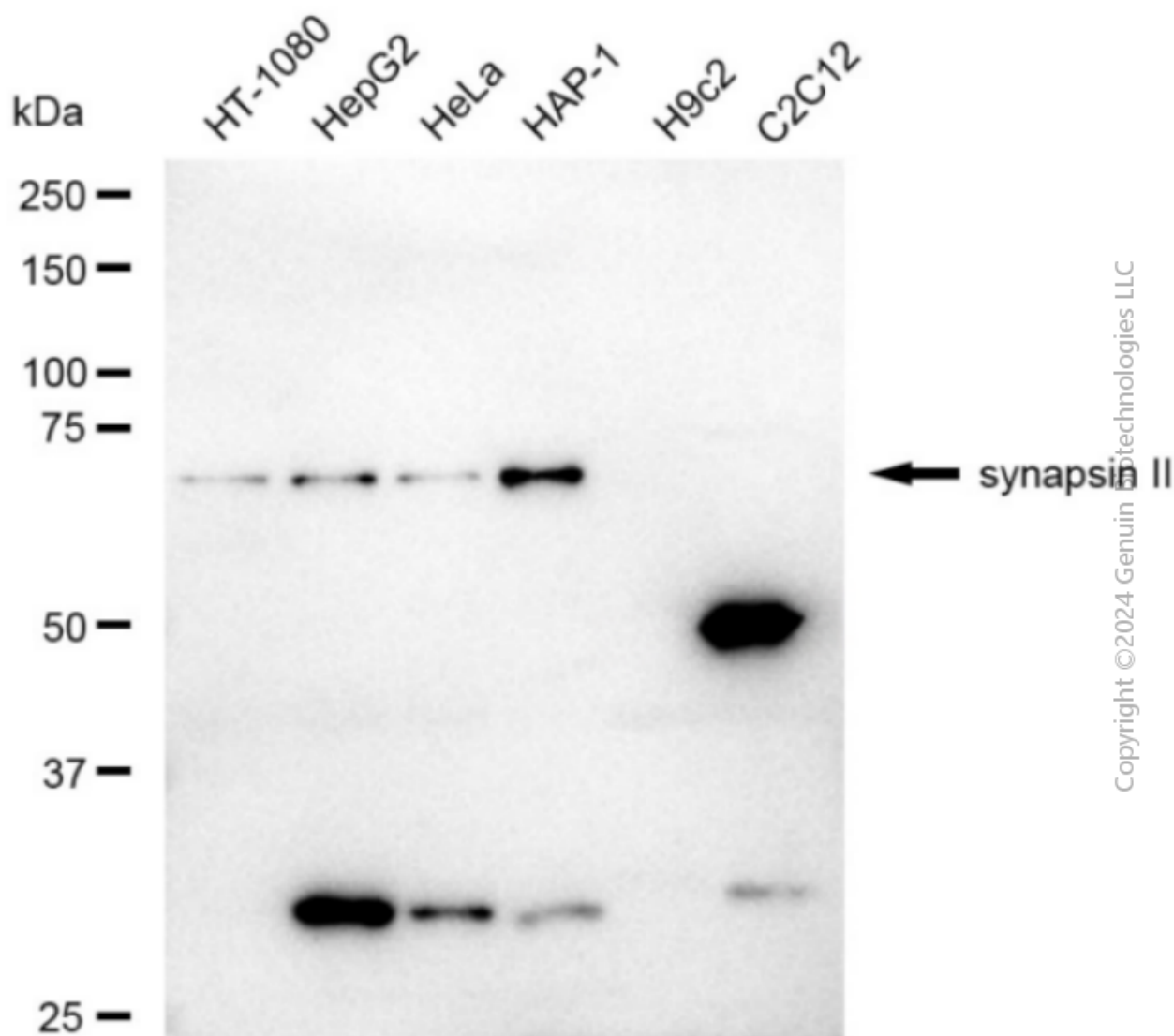
SALES@GENUINBIOTECH.COM
FAX: +1-540-855-7041

WWW.GENUINBIOTECH.COM

Anti-synapsin II Recombinant Rabbit Monoclonal Antibody

PAGE 3

Immunocytochemical staining of HAP-1 cells with synapsin II antibody (Cat#1829, 1:1,000). Nuclei were stained blue with DAPI; synapsin II was stained magenta with Alexa Fluor® 647. Images were taken using Leica stellaris 5. Protein abundance based on laser Intensity and smart gain: Medium. Scale bar: 20 μ m.



Western blotting analysis using anti-synapsin II antibody (Cat#1829). Total cell lysates (30 μ g) from various cell lines were loaded and separated by SDS-PAGE. The blot was incubated with anti-synapsin II antibody (Cat#1829, 1:5,000) and HRP-conjugated goat anti-rabbit secondary antibody (Cat#201, 1:20,000) respectively. Image was developed using FeQ™ ECL Substrate Kit (Cat#226).

SUPPORT

SUPPORT@GENUINBIOTECH.COM
TEL: +1-540-855-7041

ORDERS

SALES@GENUINBIOTECH.COM
FAX: +1-540-855-7041

WWW.GENUINBIOTECH.COM