

# Anti-Phospho-KAP1 (S824) Recombinant Rabbit Monoclonal Antibody



**Catalog #: 1838**

## Aliases

TRIM28; Tripartite Motif Containing 28; TIF1B; RNF96; KAP-1; KAP1; Transcription Intermediary Factor 1-Beta; RING Finger Protein 96; TIF1-Beta; PPP1R157; TF1B; Protein Phosphatase 1, Regulatory Subunit 157; RING-Type E3 Ubiquitin Transferase TIF1-Beta; E3 SUMO-Protein Ligase TRIM28; KRAB-Interacting Protein 1; KRAB-Associated Protein 1; Nuclear Corepressor KAP-1; TIF1beta ; KRIP-1; KRAB [Kruppel-Associated Box Domain]-Associated Protein 1; Transcriptional Intermediary Factor 1-Beta; Tripartite Motif-Containing Protein 28; Tripartite Motif-Containing 28; EC 2.3.2.27; TIF1-BETA; TIF1BETA

## Background

Gene Name: TRIM28

NCBI Gene Entry: [10155](#)

UniProt Entry: [Q13263](#)

## Application Information

Molecular Weight: Predicted, 89 kDa; observed, 110 kDa

Clonality: Rabbit monoclonal antibody

Clone ID: 23GB4700

Species Reactivity: Human, mouse, rat

Applications Tested: Western blotting (WB), flow cytometry (FCM), immunocytochemistry (IC)

## Immunogen

A synthesized peptide derived from human KAP1

## Isotype

Rabbit IgG

## Storage Buffer

Supplied in PBS (pH 7.4) containing 50% glycerol, and 0.02% sodium azide.

## Storage

Store at -20 °C for one year.

## Recommended Dilutions

Western Blotting (WB): 1:1,000-1:5,000

Flow Cytometry (FCM): 1:2,000

---

### SUPPORT

SUPPORT@GENUINBIOTECH.COM  
TEL: +1-540-855-7041

### ORDERS

SALES@GENUINBIOTECH.COM  
FAX: +1-540-855-7041

[WWW.GENUINBIOTECH.COM](http://WWW.GENUINBIOTECH.COM)

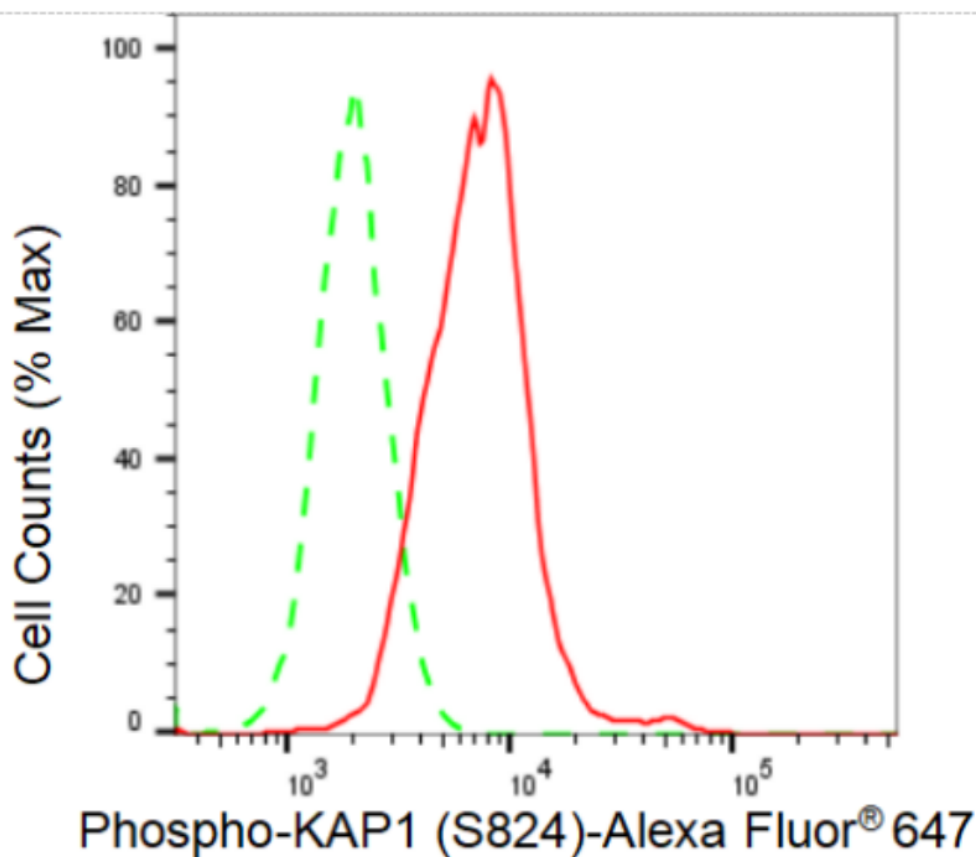
# Anti-Phospho-KAP1 (S824) Recombinant Rabbit Monoclonal Antibody

PAGE 2

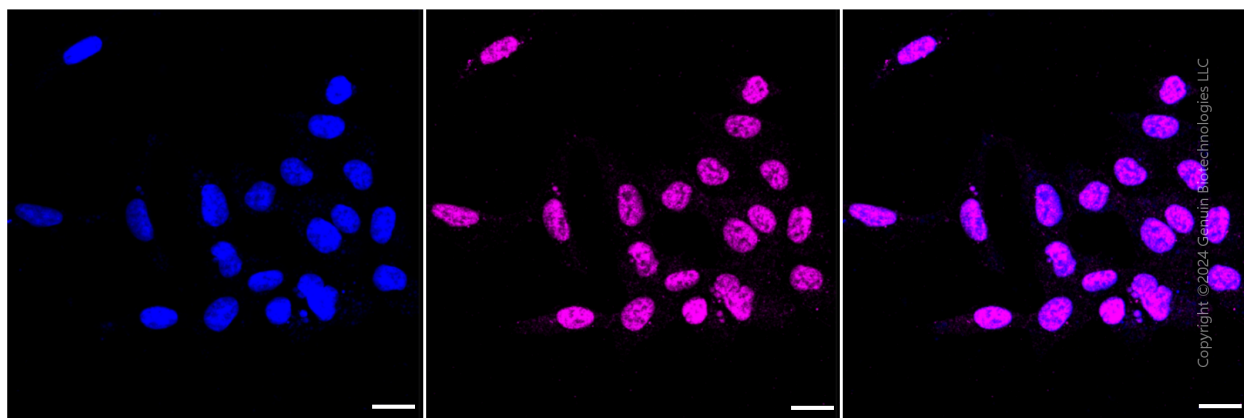
Immunocytochemistry (IC): 1:100-1:1,000

**Note:** This product is for research use only.

## Validation Data



Flow cytometric analysis of Phospho-KAP1 (S824) expression in HAP-1 cells using Phospho-KAP1 (S824) antibody (Cat#1838, 1:2,000). Green, isotype control; red, Phospho-KAP1 (S824).



Immunocytochemical staining of HAP-1 cells with Phospho-KAP1 (S824) antibody (Cat#1838,

### SUPPORT

SUPPORT@GENUINBIOTECH.COM  
TEL: +1-540-855-7041

### ORDERS

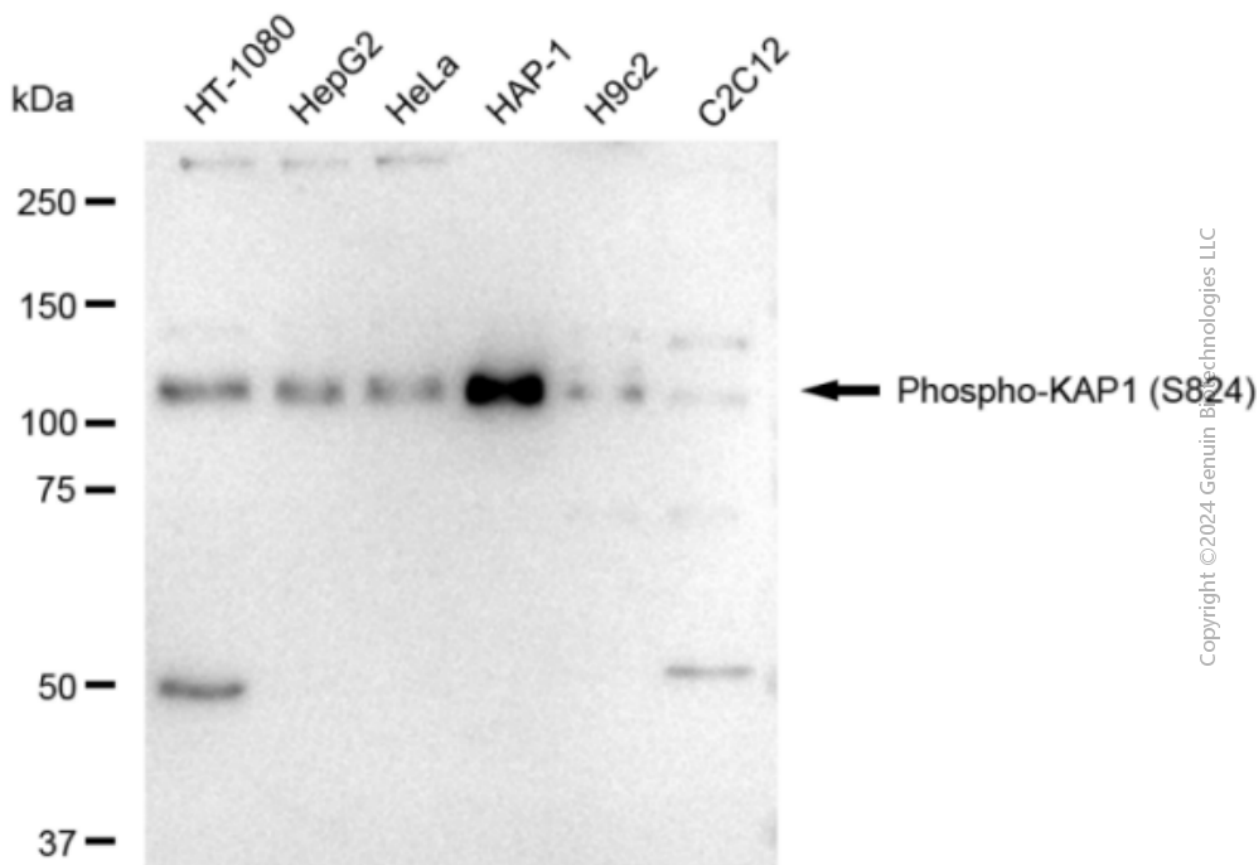
SALES@GENUINBIOTECH.COM  
FAX: +1-540-855-7041

[WWW.GENUINBIOTECH.COM](http://WWW.GENUINBIOTECH.COM)

## Anti-Phospho-KAP1 (S824) Recombinant Rabbit Monoclonal Antibody

PAGE 3

1:1,000). Nuclei were stained blue with DAPI; Phospho-KAP1 (S824) was stained magenta with Alexa Fluor® 647. Images were taken using Leica stellaris 5. Protein abundance based on laser Intensity and smart gain: Medium. Scale bar: 20  $\mu$ m.



Western blotting analysis using anti-Phospho-KAP1 (S824) antibody (Cat#1838). Total cell lysates (30  $\mu$ g) from various cell lines were loaded and separated by SDS-PAGE. The blot was incubated with anti-Phospho-KAP1 (S824) antibody (Cat#1838, 1:5,000) and HRP-conjugated goat anti-rabbit secondary antibody (Cat#201, 1:20,000) respectively. Image was developed using FeQ™ ECL Substrate Kit (Cat#226).

### SUPPORT

SUPPORT@GENUINBIOTECH.COM  
TEL: +1-540-855-7041

### ORDERS

SALES@GENUINBIOTECH.COM  
FAX: +1-540-855-7041

WWW.GENUINBIOTECH.COM