

Anti-WD repeat domain 5 Recombinant Rabbit Monoclonal Antibody



Catalog #: 1845

Aliases

WDR5; WD Repeat Domain 5; CFAP89; SWD3; Cilia And Flagella Associated Protein 89; WD Repeat-Containing Protein 5; BMP2-Induced 3-Kb Gene Protein; BMP-2-Induced Gene 3 Kb; BIG-3; BIG3; SWD3, Set1c WD40 Repeat Protein, Homolog (S. Cerevisiae); SWD3, Set1c WD40 Repeat Protein, Homolog

Background

Gene Name: WDR5

NCBI Gene Entry: [11091](#)

UniProt Entry: [P61964](#)

Application Information

Molecular Weight: Predicted, 37 kDa; observed, 36 kDa

Clonality: Rabbit monoclonal antibody

Clone ID: 23GB4725

Species Reactivity: Human, mouse, rat

Applications Tested: Western blotting (WB), flow cytometry (FCM), immunocytochemistry (IC)

Immunogen

A synthesized peptide derived from human WDR5

Isotype

Rabbit IgG

Storage Buffer

Supplied in PBS (pH 7.4) containing 50% glycerol, and 0.02% sodium azide.

Storage

Store at -20 °C for one year.

Recommended Dilutions

Western Blotting (WB): 1:1,000-1:5,000

Flow Cytometry (FCM): 1:2,000

Immunocytochemistry (IC): 1:100-1:1,000

SUPPORT

SUPPORT@GENUINBIOTECH.COM
TEL: +1-540-855-7041

ORDERS

SALES@GENUINBIOTECH.COM
FAX: +1-540-855-7041

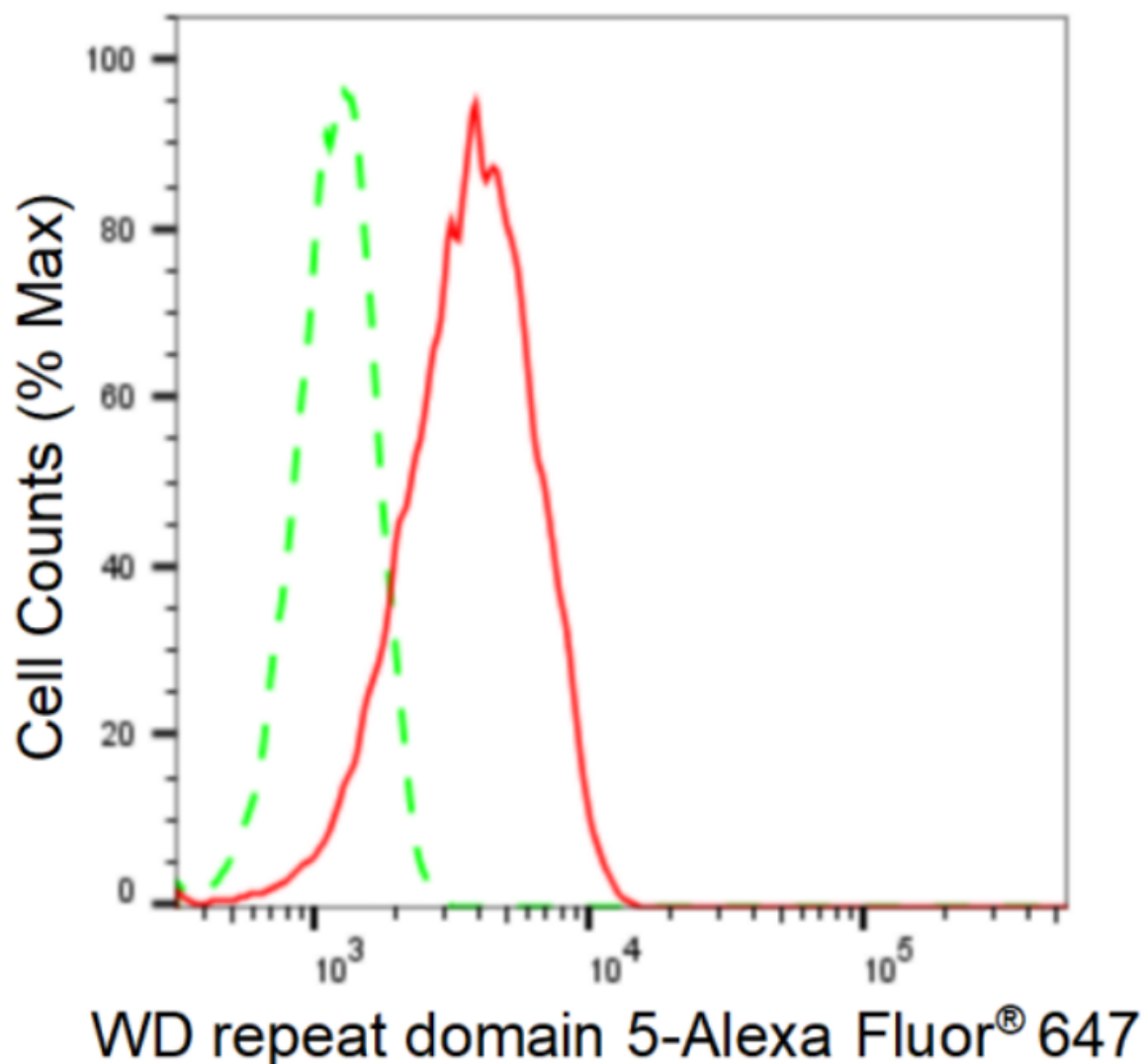
WWW.GENUINBIOTECH.COM

Anti-WD repeat domain 5 Recombinant Rabbit Monoclonal Antibody

PAGE 2

Note: This product is for research use only.

Validation Data



Flow cytometric analysis of WD repeat domain 5 expression in HepG2 cells using anti-WD repeat domain 5 antibody (Cat#1845, 1:2,000). Green, isotype control; red, WD repeat domain 5.

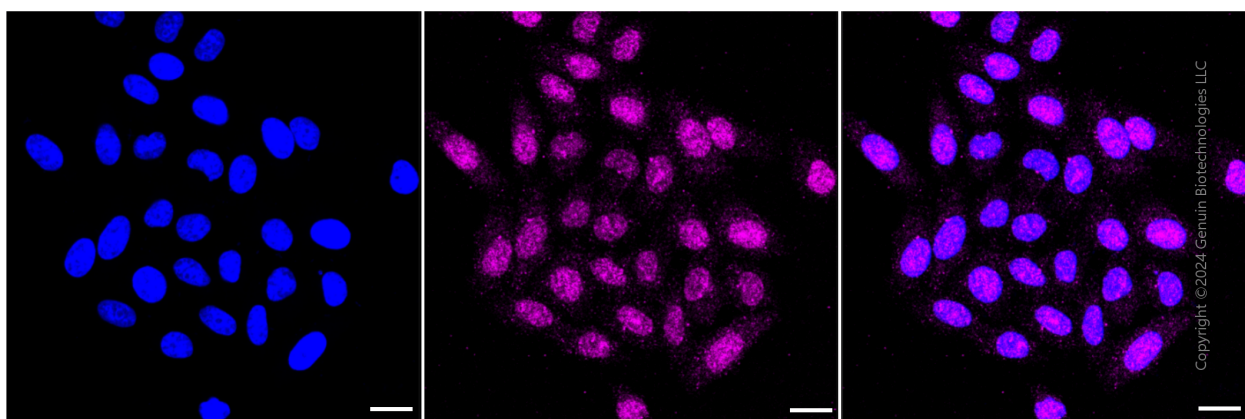
SUPPORT

SUPPORT@GENUINBIOTECH.COM
TEL: +1-540-855-7041

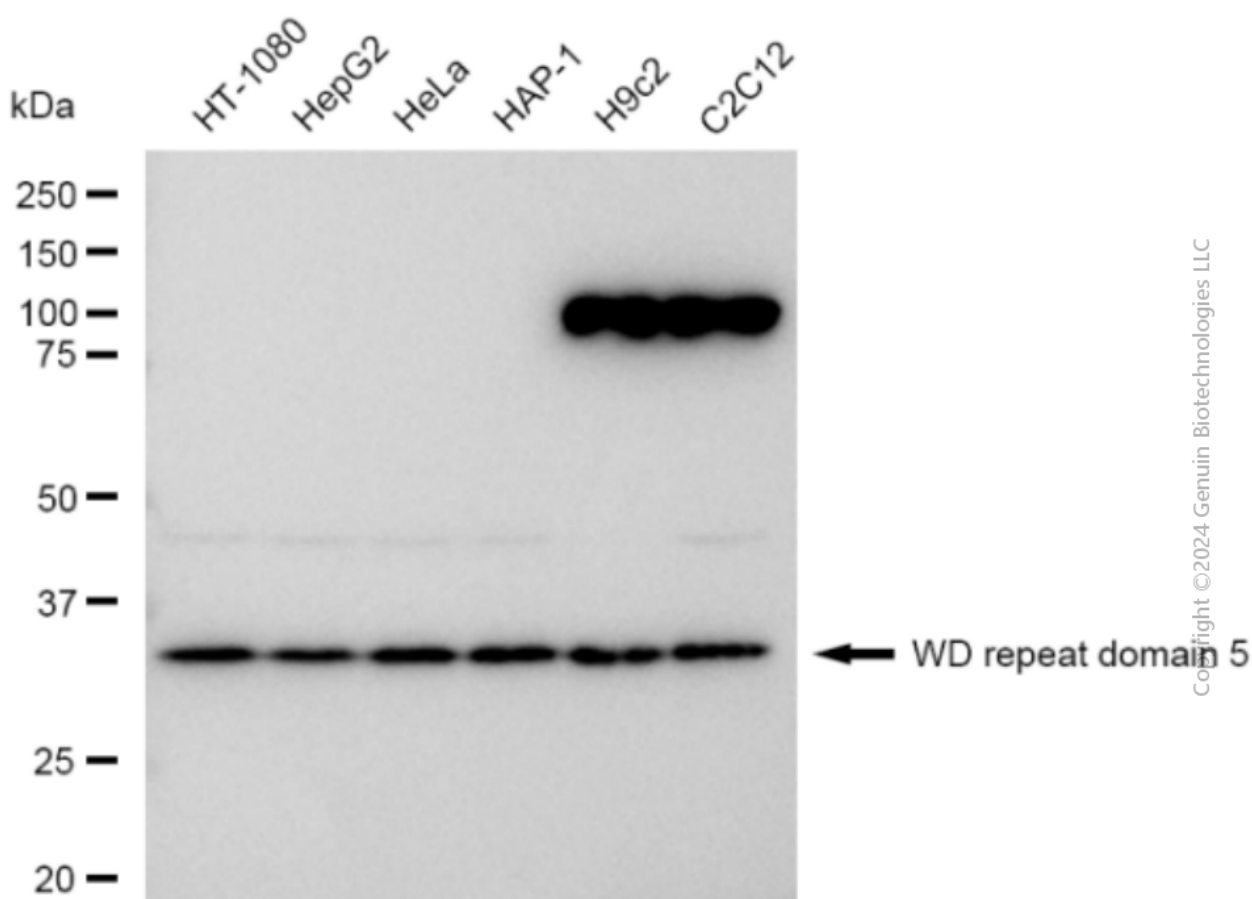
ORDERS

SALES@GENUINBIOTECH.COM
FAX: +1-540-855-7041

WWW.GENUINBIOTECH.COM



Immunocytochemical staining of HepG2 cells with WD repeat domain 5 antibody (Cat#1845, 1:1,000). Nuclei were stained blue with DAPI; WD repeat domain 5 was stained magenta with Alexa Fluor® 647. Images were taken using Leica stellaris 5. Protein abundance based on laser Intensity and smart gain: Low. Scale bar: 20 µm.



Western blotting analysis using anti-WD repeat domain 5 antibody (Cat#1845). Total cell lysates (30 µg) from various cell lines were loaded and separated by SDS-PAGE. The blot was incubated with anti-WD repeat domain 5 antibody (Cat#1845, 1:5,000) and HRP-conjugated goat anti-rabbit secondary antibody (Cat#201, 1:20,000) respectively. Image was developed using FeQ™ ECL

SUPPORT

SUPPORT@GENUINBIOTECH.COM
TEL: +1-540-855-7041

ORDERS

SALES@GENUINBIOTECH.COM
FAX: +1-540-855-7041

WWW.GENUINBIOTECH.COM

Anti-WD repeat domain 5 Recombinant Rabbit Monoclonal Antibody

PAGE 4

Substrate Kit (Cat#226).

SUPPORT

SUPPORT@GENUINBIOTECH.COM
TEL: +1-540-855-7041

ORDERS

SALES@GENUINBIOTECH.COM
FAX: +1-540-855-7041

WWW.GENUINBIOTECH.COM