

# Anti-MPP1 Recombinant Rabbit Monoclonal Antibody



**Catalog #: 1860**

## Aliases

MPP1; MAGUK P55 Scaffold Protein 1; DXS552E; PEMP; Membrane Protein, Palmitoylated 1, 55kDa; 55 KDa Erythrocyte Membrane Protein; Membrane Protein, Palmitoylated 1; Membrane Palmitoylated Protein 1; EMP55; P55; Palmitoylated Erythrocyte Membrane Protein; Membrane Protein, Palmitoylated 1 (55kD); Erythrocyte Membrane Protein P55; Aging-Associated Gene 12; Migration-Related Gene; EC 2.7.11; AAG12; MRG1

## Background

Gene Name: MPP1

NCBI Gene Entry: [4354](#)

UniProt Entry: [Q00013](#)

## Application Information

Molecular Weight: Predicted, 52 kDa; observed, 55 kDa

Clonality: Rabbit monoclonal antibody

Clone ID: 23GB4770

Species Reactivity: Human, mouse

Applications Tested: Western blotting (WB), immunocytochemistry (IC)

## Immunogen

A synthesized peptide derived from human MPP1

## Isotype

Rabbit IgG

## Storage Buffer

Supplied in PBS (pH 7.4) containing 50% glycerol, and 0.02% sodium azide.

## Storage

Store at -20 °C for one year.

## Recommended Dilutions

Western Blotting (WB): 1:1,000-1:5,000

Immunocytochemistry (IC): 1:100-1:1,000

---

### SUPPORT

SUPPORT@GENUINBIOTECH.COM  
TEL: +1-540-855-7041

### ORDERS

SALES@GENUINBIOTECH.COM  
FAX: +1-540-855-7041

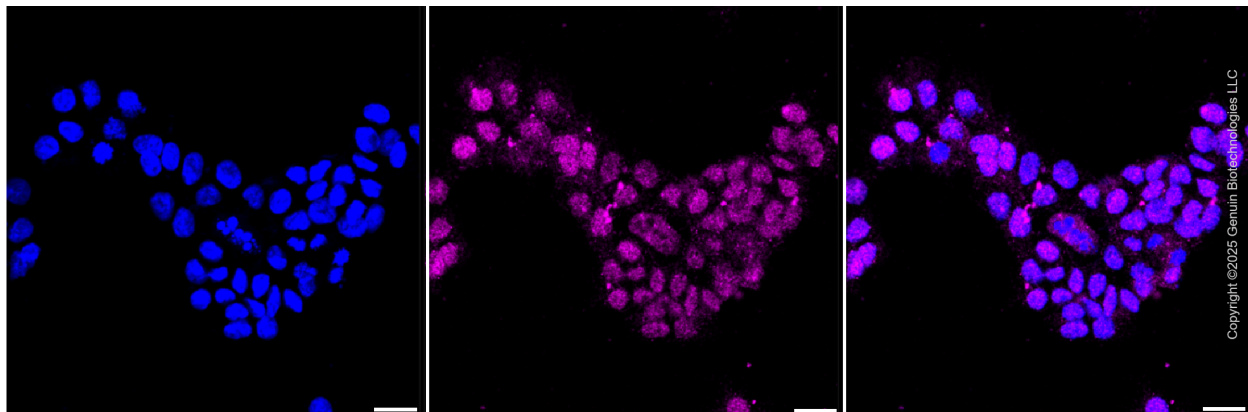
[WWW.GENUINBIOTECH.COM](http://WWW.GENUINBIOTECH.COM)

# Anti-MPP1 Recombinant Rabbit Monoclonal Antibody

PAGE 2

**Note:** This product is for research use only.

## Validation Data



Immunocytochemical staining of HAP1 cells with anti-MPP1 antibody (Cat #1860, 1:1,000) . Nuclei were stained blue with DAPI; MPP1 was stained magenta with Alexa Fluor® 647. Images were taken using Leica stellaris 5. Protein abundance based on laser Intensity and smart gain: Medium. Scale bar, 20  $\mu$ m.

---

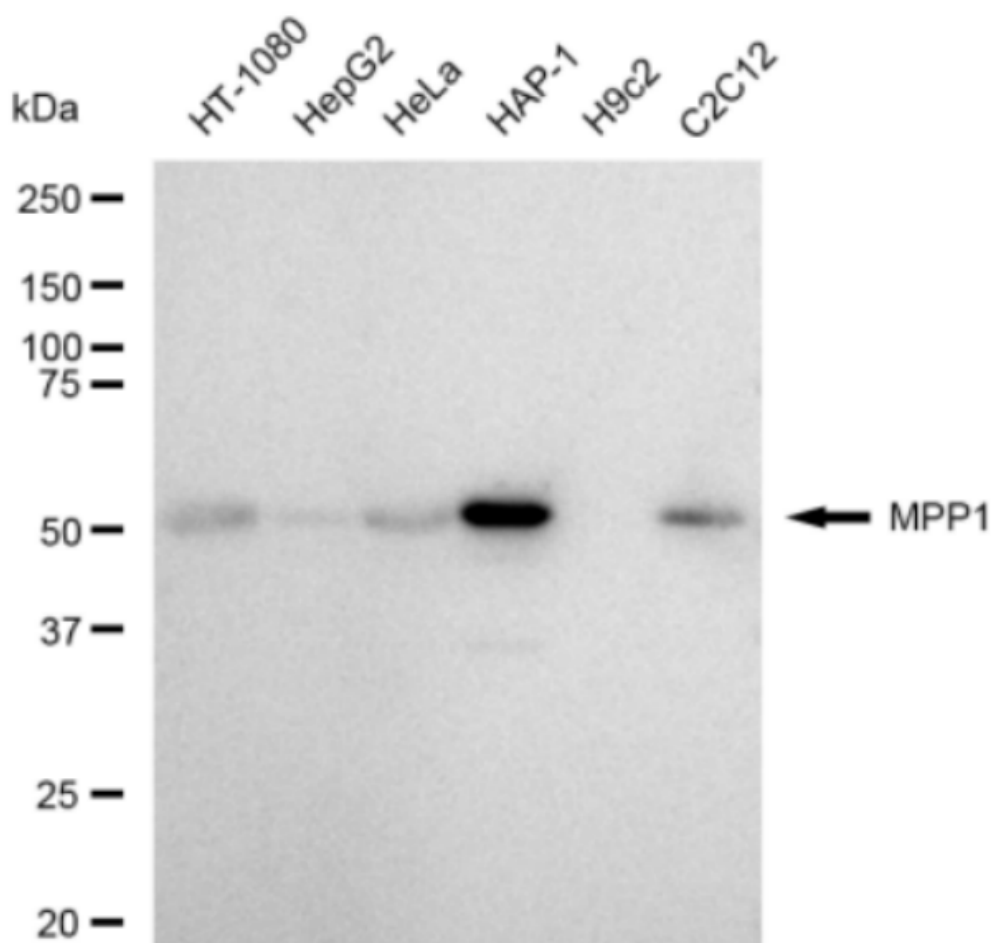
### SUPPORT

SUPPORT@GENUINBIOTECH.COM  
TEL: +1-540-855-7041

### ORDERS

SALES@GENUINBIOTECH.COM  
FAX: +1-540-855-7041

[WWW.GENUINBIOTECH.COM](http://WWW.GENUINBIOTECH.COM)



Copyright ©2024 Genuin Biotechnologies LLC

Western blotting analysis using anti-MPP1 antibody (Cat#1860). Total cell lysates (30  $\mu$ g) from various cell lines were loaded and separated by SDS-PAGE. The blot was incubated with anti-MPP1 antibody (Cat#1860, 1:5,000) and HRP-conjugated goat anti-rabbit secondary antibody (Cat#201, 1:20,000) respectively. Image was developed using FeQ™ ECL Substrate Kit (Cat#226).