

# Anti-RAB8A Recombinant Rabbit Monoclonal Antibody



**Catalog #: 1864**

## Aliases

RAB8A; RAB8A, Member RAS Oncogene Family; RAB8; MEL; Mel Transforming Oncogene (Derived From Cell Line NK14); Ras-Related Protein Rab-8A; Oncogene C-Mel; Mel Transforming Oncogene (Derived From Cell Line NK14)- RAB8 Homolog; Mel Transforming Oncogene (RAB8 Homolog); Ras-Associated Protein RAB8; EC 3.6.5.2

## Background

Gene Name: RAB8A

NCBI Gene Entry: [4218](#)

UniProt Entry: [P61006](#)

## Application Information

Molecular Weight: Predicted, 24 kDa; observed, 24 kDa

Clonality: Rabbit monoclonal antibody

Clone ID: 23GB4900

Species Reactivity: Human, mouse, rat

Applications Tested: Western blotting (WB), immunocytochemistry (IC), flow cytometry (FCM)

## Immunogen

A synthesized peptide derived from human RAB8A

## Isotype

Rabbit IgG

## Storage Buffer

Supplied in PBS (pH 7.4) containing 50% glycerol, and 0.02% sodium azide.

## Storage

Store at -20 °C for one year.

## Recommended Dilutions

Western Blotting (WB): 1:1,000-1:5,000

Immunocytochemistry (IC): 1:100-1:1,000

Flow Cytometry (FCM): 1:2,000

---

### SUPPORT

SUPPORT@GENUINBIOTECH.COM  
TEL: +1-540-855-7041

### ORDERS

SALES@GENUINBIOTECH.COM  
FAX: +1-540-855-7041

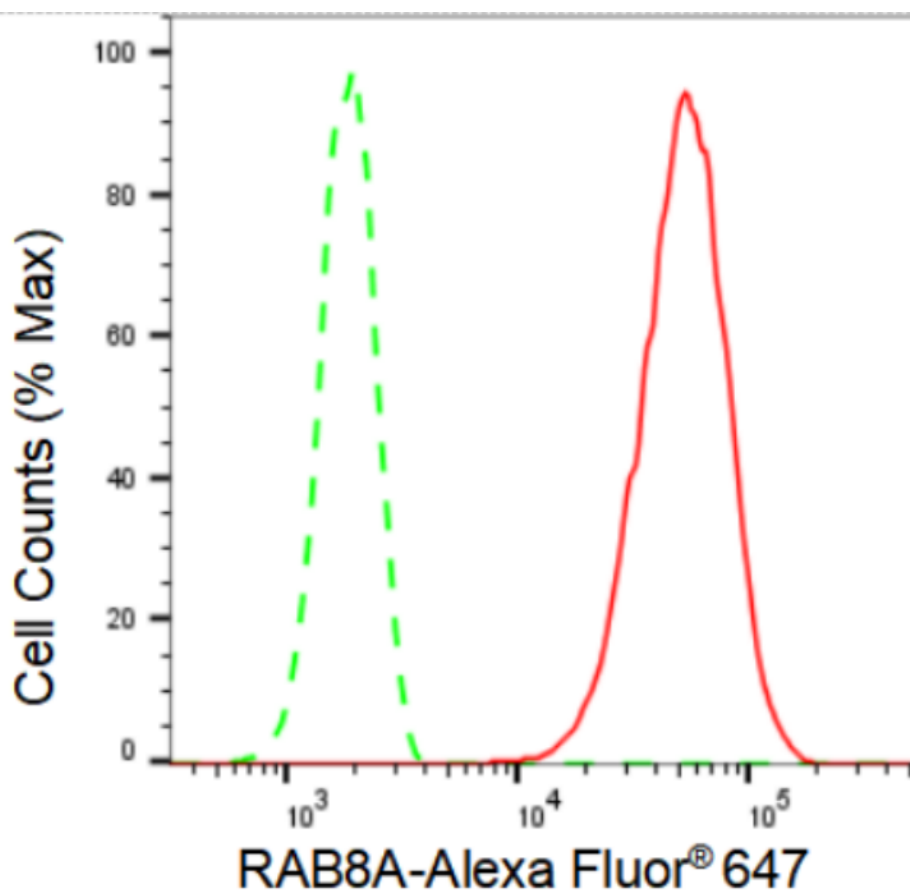
[WWW.GENUINBIOTECH.COM](http://WWW.GENUINBIOTECH.COM)

# Anti-RAB8A Recombinant Rabbit Monoclonal Antibody

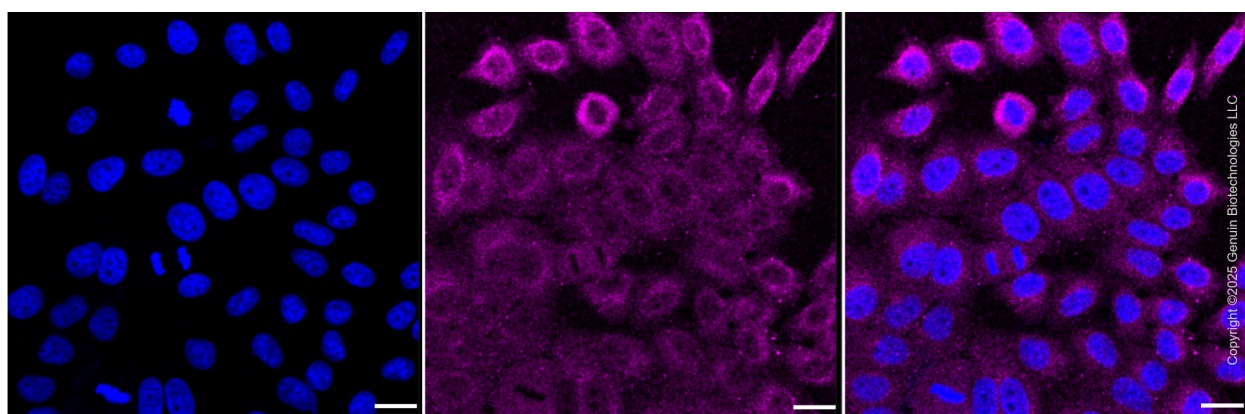
PAGE 2

**Note:** This product is for research use only.

## Validation Data



Flow cytometric analysis of RAB8A expression in HepG2 cells using RAB8A antibody (Cat#1864, 1:2,000). Green, isotype control; red, RAB8A.



Immunocytochemical staining of HepG2 cells with anti-RAB8A antibody (Cat #1864, 1:1,000) . Nuclei were stained blue with DAPI; RAB8A was stained magenta with Alexa Fluor® 647. Images were taken using Leica stellaris 5. Protein abundance based on laser Intensity and smart

### SUPPORT

SUPPORT@GENUINBIOTECH.COM  
TEL: +1-540-855-7041

### ORDERS

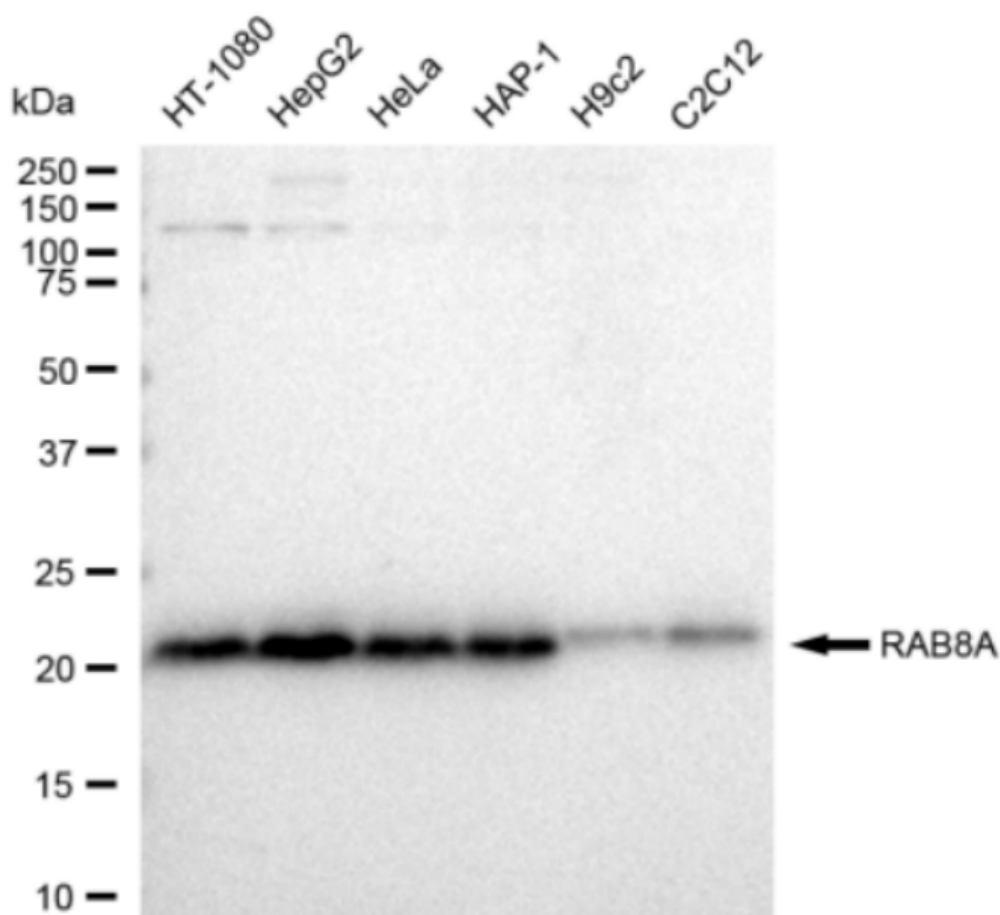
SALES@GENUINBIOTECH.COM  
FAX: +1-540-855-7041

[WWW.GENUINBIOTECH.COM](http://WWW.GENUINBIOTECH.COM)

## Anti-RAB8A Recombinant Rabbit Monoclonal Antibody

PAGE 3

gain: Medium. Scale bar, 20  $\mu$ m.



Copyright ©2024 Genuin Biotechnologies LLC

Western blotting analysis using anti-RAB8A antibody (Cat#1864). Total cell lysates (30  $\mu$ g) from various cell lines were loaded and separated by SDS-PAGE. The blot was incubated with anti-RAB8A antibody (Cat#1864, 1:5,000) and HRP-conjugated goat anti-rabbit secondary antibody (Cat#201, 1:20,000) respectively. Image was developed using FeQ™ ECL Substrate Kit (Cat#226).

### SUPPORT

SUPPORT@GENUINBIOTECH.COM  
TEL: +1-540-855-7041

### ORDERS

SALES@GENUINBIOTECH.COM  
FAX: +1-540-855-7041

[WWW.GENUINBIOTECH.COM](http://WWW.GENUINBIOTECH.COM)