

Anti-Splicing factor 3a subunit 3 Recombinant Rabbit Monoclonal Antibody



Catalog #: 1867

Aliases

SF3A3; Splicing Factor 3a Subunit 3; SAP61; SF3a60; PRPF9; PRP9; Splicing Factor 3a, Subunit 3, 60kDa; Splicing Factor 3a, Subunit 3, 60kD; Splicing Factor 3A Subunit 3; SAP 61; Pre-mRNA Splicing Factor SF3a (60kD); Spliceosome Associated Protein 61; Spliceosome-Associated Protein 61; SF3A60

Background

Gene Name: SF3A3

NCBI Gene Entry: [10946](#)

UniProt Entry: [Q12874](#)

Application Information

Molecular Weight: Predicted, 59 kDa; observed, 59 kDa

Clonality: Rabbit monoclonal antibody

Clone ID: 23GB4775

Species Reactivity: Human, mouse, rat

Applications Tested: Western blotting (WB), immunocytochemistry (IC), flow cytometry (FCM)

Immunogen

A synthesized peptide derived from human SF3A3

Isotype

Rabbit IgG

Storage Buffer

Supplied in PBS (pH 7.4) containing 50% glycerol, and 0.02% sodium azide.

Storage

Store at -20 °C for one year.

Recommended Dilutions

Western Blotting (WB): 1:1,000-1:5,000

Immunocytochemistry (IC): 1:100-1:1,000

Flow Cytometry (FCM): 1:2,000

SUPPORT

SUPPORT@GENUINBIOTECH.COM
TEL: +1-540-855-7041

ORDERS

SALES@GENUINBIOTECH.COM
FAX: +1-540-855-7041

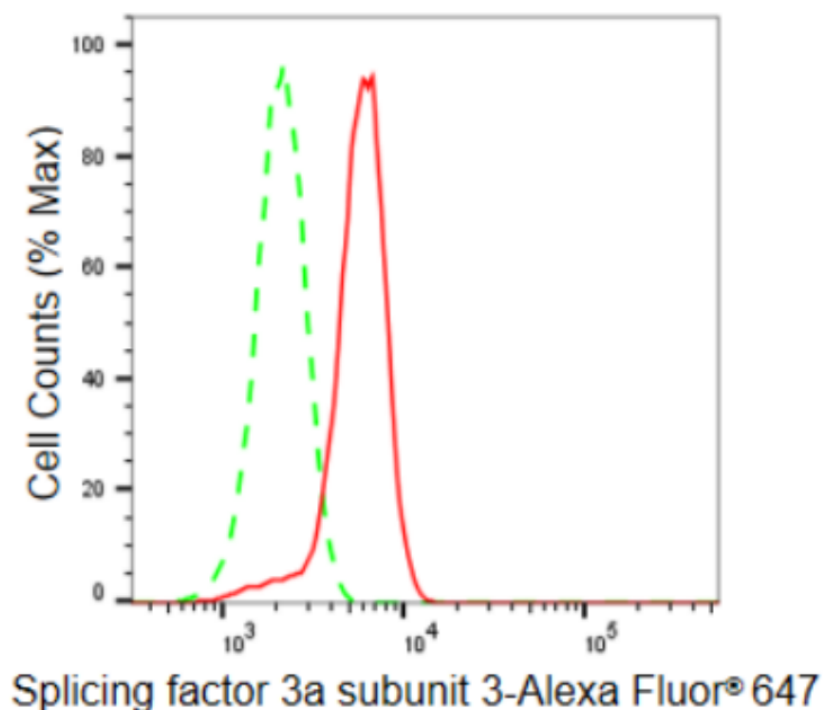
WWW.GENUINBIOTECH.COM

Anti-Splicing factor 3a subunit 3 Recombinant Rabbit Monoclonal Antibody

PAGE 2

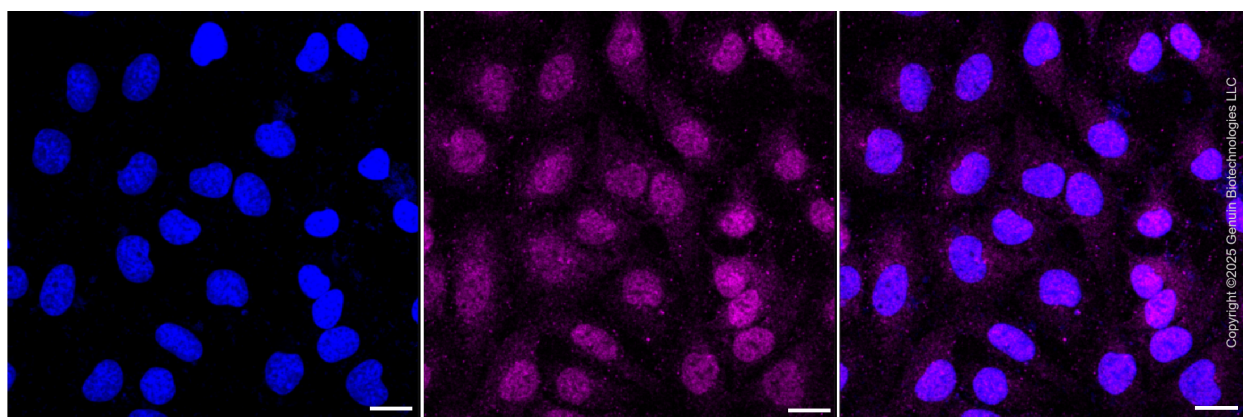
Note: This product is for research use only.

Validation Data



Copyright ©2024 Genuin Biotechnologies LLC

Flow cytometric analysis of Splicing factor 3a subunit 3 expression in HeLa cells using Splicing factor 3a subunit 3 antibody (Cat#1867, 1:2,000). Green, isotype control; red, Splicing factor 3a subunit 3.



Immunocytochemical staining of HeLa cells with anti-Splicing factor 3a subunit 3 antibody (Cat#1867,1:1000) . Nuclei were stained blue with DAPI; Splicing factor 3a subunit 3 was stained magenta with Alexa Fluor® 647. Images were taken using Leica stellaris 5. Protein abundance based on laser Intensity and smart gain: Low. Scale bar, 20 µm.

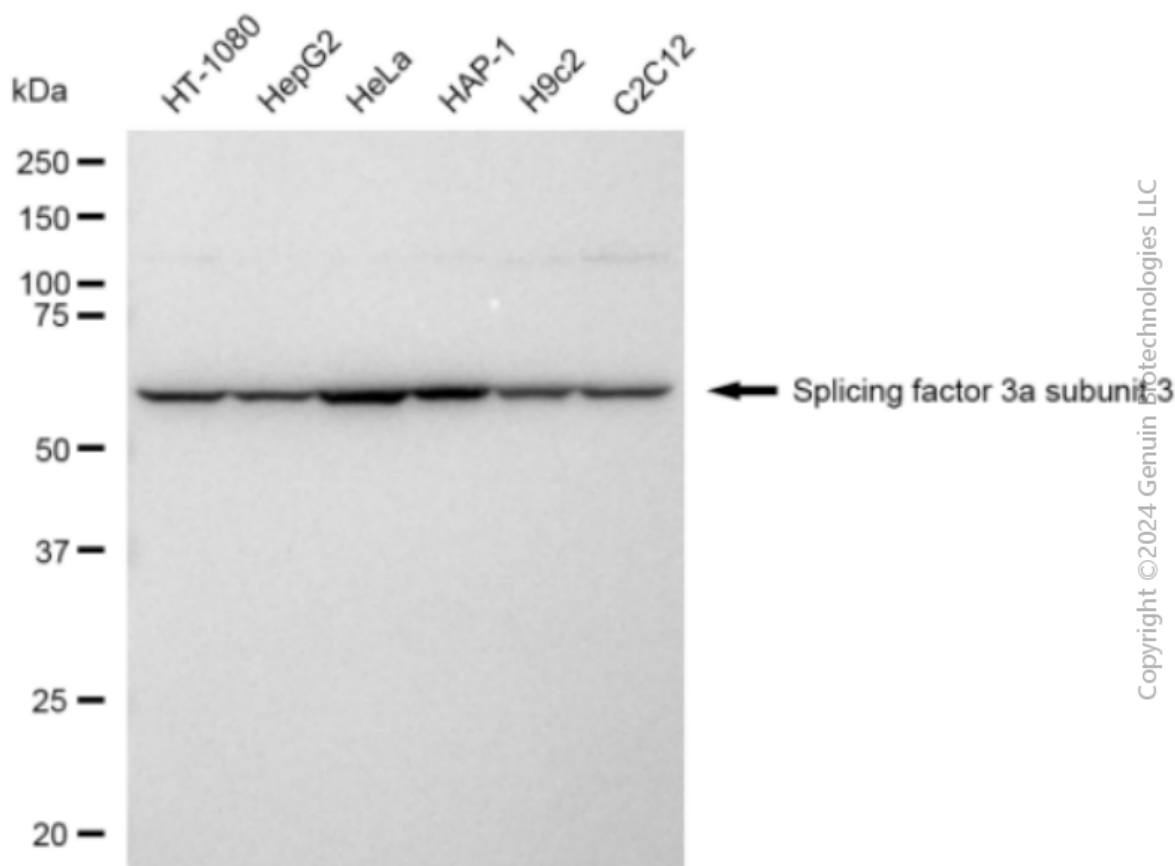
SUPPORT

SUPPORT@GENUINBIOTECH.COM
TEL: +1-540-855-7041

ORDERS

SALES@GENUINBIOTECH.COM
FAX: +1-540-855-7041

WWW.GENUINBIOTECH.COM



Western blotting analysis using anti-Splicing factor 3a subunit 3 antibody (Cat#1867). Total cell lysates (30 µg) from various cell lines were loaded and separated by SDS-PAGE. The blot was incubated with anti-Splicing factor 3a subunit 3 antibody (Cat#1867, 1:5,000) and HRP-conjugated goat anti-rabbit secondary antibody (Cat#201, 1:20,000) respectively. Image was developed using FeQ™ ECL Substrate Kit (Cat#226).