

# Anti-SLC27A4 Recombinant Rabbit Monoclonal Antibody



**Catalog #: 1870**

## Aliases

SLC27A4; Solute Carrier Family 27 Member 4; ACSVL4; FATP4; Long-Chain Fatty Acid Transport Protein 4; Solute Carrier Family 27 (Fatty Acid Transporter), Member 4; Acyl-CoA Synthetase Very Long Chain Family Member 4; Very Long-Chain Acyl-CoA Synthetase 4; Long-Chain-Fatty-Acid--CoA Ligase; Fatty Acid Transport Protein 4; Arachidonate--CoA Ligase; FATP-4; EC 6.2.1.15; EC 6.2.1.3; EC 6.2.1.-; EC 6.2.1.7; EC 6.2.1; IPS

## Background

Gene Name: SLC27A4

NCBI Gene Entry: [10999](#)

UniProt Entry: [Q6P1M0](#)

## Application Information

Molecular Weight: Predicted, 72 kDa; observed, 65 kDa

Clonality: Rabbit monoclonal antibody

Clone ID: 23GB4915

Species Reactivity: Human

Applications Tested: Western blotting (WB), flow cytometry (FCM), immunocytochemistry (IC)

## Immunogen

A synthesized peptide derived from human SLC27A4

## Isotype

Rabbit IgG

## Storage Buffer

Supplied in PBS (pH 7.4) containing 50% glycerol, and 0.02% sodium azide.

## Storage

Store at -20 °C for one year.

## Recommended Dilutions

Western Blotting (WB): 1:1,000-1:5,000

Flow Cytometry (FCM): 1:2,000

Immunocytochemistry (IC): 1:100-1:1,000

---

### SUPPORT

SUPPORT@GENUINBIOTECH.COM  
TEL: +1-540-855-7041

### ORDERS

SALES@GENUINBIOTECH.COM  
FAX: +1-540-855-7041

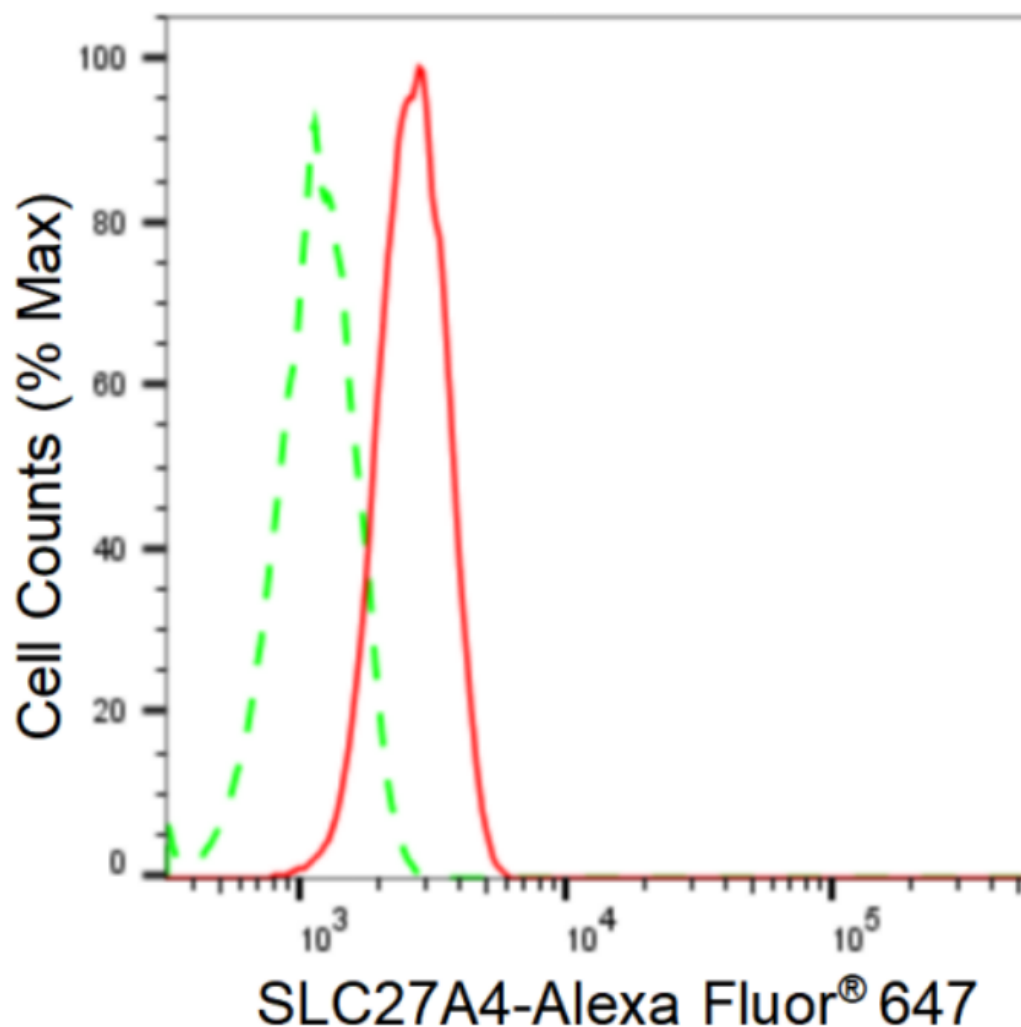
[WWW.GENUINBIOTECH.COM](http://WWW.GENUINBIOTECH.COM)

# Anti-SLC27A4 Recombinant Rabbit Monoclonal Antibody

PAGE 2

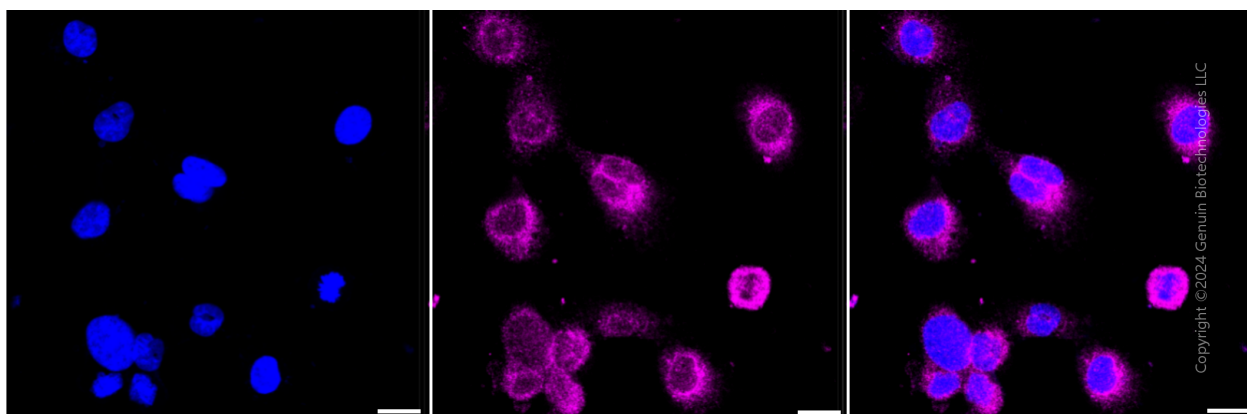
**Note:** This product is for research use only.

## Validation Data



Copyright ©2024 Genuin Biotechnologies LLC

Flow cytometric analysis of SLC27A4 expression in HT-1080 cells using anti-SLC27A4 antibody (Cat#1870, 1:2,000). Green, isotype control; red, SLC27A4.



### SUPPORT

SUPPORT@GENUINBIOTECH.COM  
TEL: +1-540-855-7041

### ORDERS

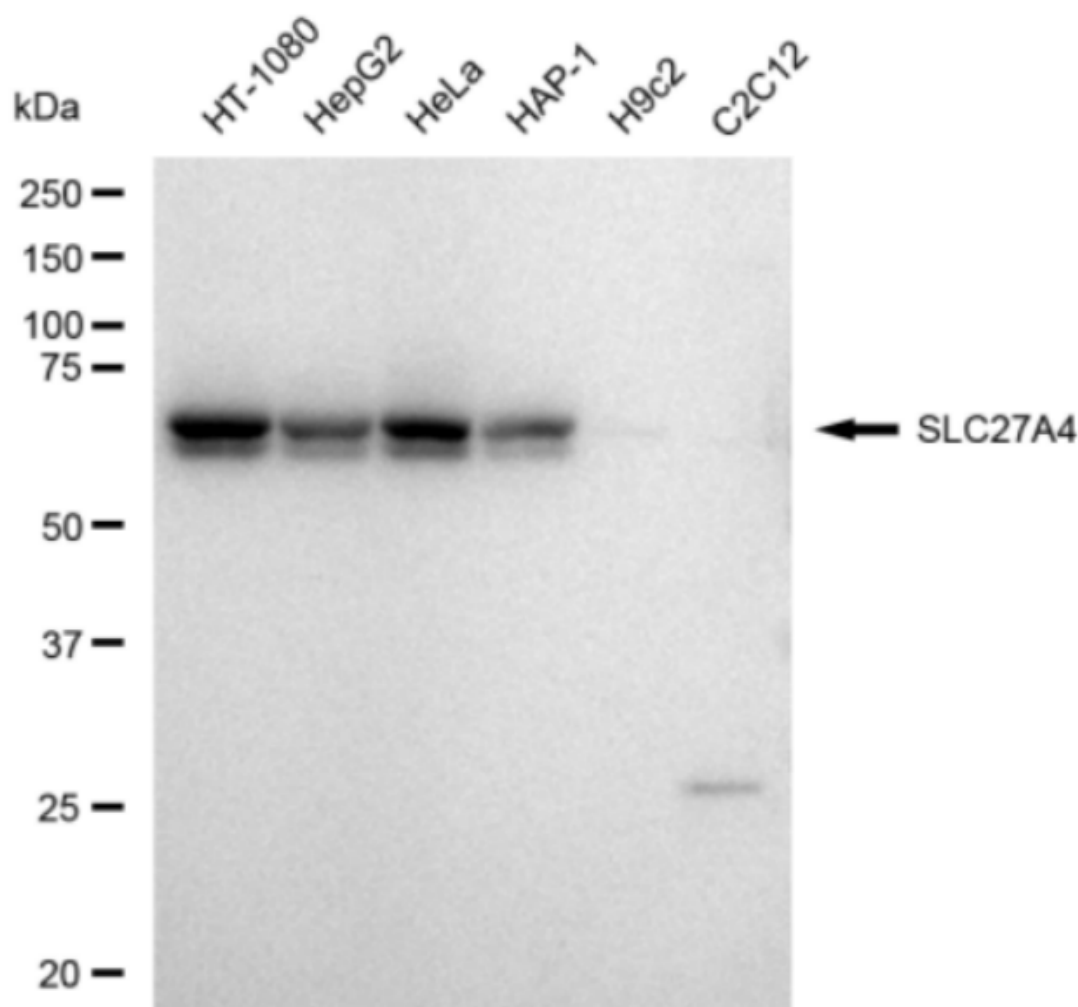
SALES@GENUINBIOTECH.COM  
FAX: +1-540-855-7041

WWW.GENUINBIOTECH.COM

## Anti-SLC27A4 Recombinant Rabbit Monoclonal Antibody

PAGE 3

Immunocytochemical staining of HT-1080 cells with anti-SLC27A4 antibody (Cat#1870, 1:1,000). Nuclei were stained blue with DAPI; SLC27A4 was stained magenta with Alexa Fluor® 647. Images were taken using Leica stellaris 5. Protein abundance based on laser Intensity and smart gain: Medium. Scale bar: 20  $\mu$ m.



Copyright ©2024 Genuin Biotechnologies LLC

Western blotting analysis using anti-SLC27A4 antibody (Cat#1870). Total cell lysates (30  $\mu$ g) from various cell lines were loaded and separated by SDS-PAGE. The blot was incubated with anti-SLC27A4 antibody (Cat#1870, 1:5,000) and HRP-conjugated goat anti-rabbit secondary antibody (Cat#201, 1:20,000) respectively. Image was developed using FeQ™ ECL Substrate Kit (Cat#226).

### SUPPORT

SUPPORT@GENUINBIOTECH.COM  
TEL: +1-540-855-7041

### ORDERS

SALES@GENUINBIOTECH.COM  
FAX: +1-540-855-7041

[WWW.GENUINBIOTECH.COM](http://WWW.GENUINBIOTECH.COM)