

Anti-TBLR1 Recombinant Rabbit Monoclonal Antibody



Catalog #: 1872

Aliases

TBL1XR1; TBL1X/Y Related 1; TBLR1; IRA1; F-Box-Like/WD Repeat-Containing Protein TBL1XR1; DC42; C21; Nuclear Receptor Corepressor/HDAC3 Complex Subunit TBLR1; Transducin Beta Like 1 X-Linked Receptor 1; TBL1-Related Protein 1; TBL1X Receptor 1; FLJ12894; Nuclear Receptor Co-Repressor/HDAC3 Complex Subunit; Transducin (Beta)-Like 1X-Linked Receptor 1; Transducin Beta-Like 1X-Related Protein 1; TBL1-Related Protein; MRD41

Background

Gene Name: TBL1XR1

NCBI Gene Entry: [79718](#)

UniProt Entry: [Q9BZK7](#)

Application Information

Molecular Weight: Predicted, 56 kDa; observed, 56 kDa

Clonality: Rabbit monoclonal antibody

Clone ID: 23GB4935

Species Reactivity: Human, mouse, rat

Applications Tested: Western blotting (WB), immunocytochemistry (IC), flow cytometry (FCM)

Immunogen

A synthesized peptide derived from human TBLR1

Isotype

Rabbit IgG

Storage Buffer

Supplied in PBS (pH 7.4) containing 50% glycerol, and 0.02% sodium azide.

Storage

Store at -20 °C for one year.

Recommended Dilutions

Western Blotting (WB): 1:1,000-1:5,000

Immunocytochemistry (IC): 1:100-1:1,000

Flow Cytometry (FCM): 1:2,000

SUPPORT

SUPPORT@GENUINBIOTECH.COM
TEL: +1-540-855-7041

ORDERS

SALES@GENUINBIOTECH.COM
FAX: +1-540-855-7041

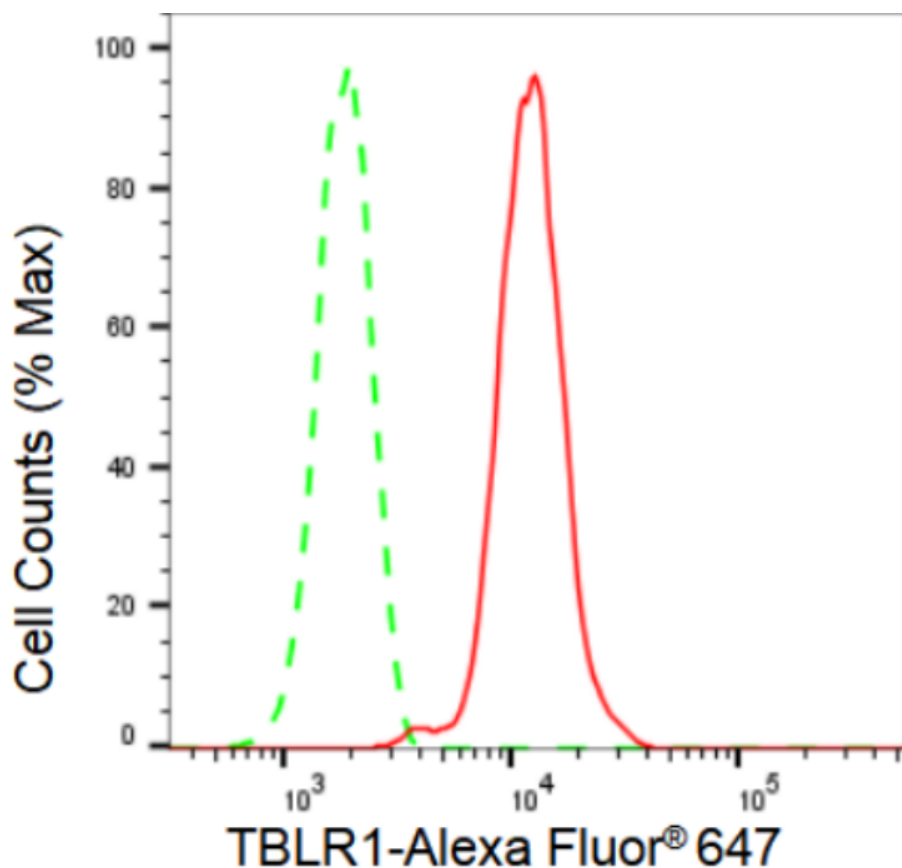
WWW.GENUINBIOTECH.COM

Anti-TBLR1 Recombinant Rabbit Monoclonal Antibody

PAGE 2

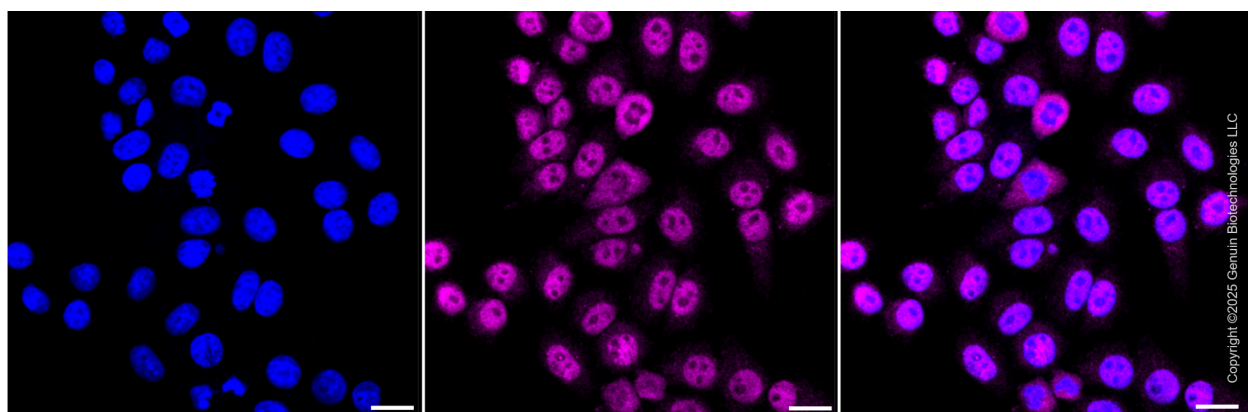
Note: This product is for research use only.

Validation Data



Copyright ©2024 Genuin Biotechnologies LLC

Flow cytometric analysis of TBLR1 expression in HepG2 cells using TBLR1 antibody (Cat#1872, 1:2,000). Green, isotype control; red, TBLR1.



SUPPORT

SUPPORT@GENUINBIOTECH.COM
TEL: +1-540-855-7041

ORDERS

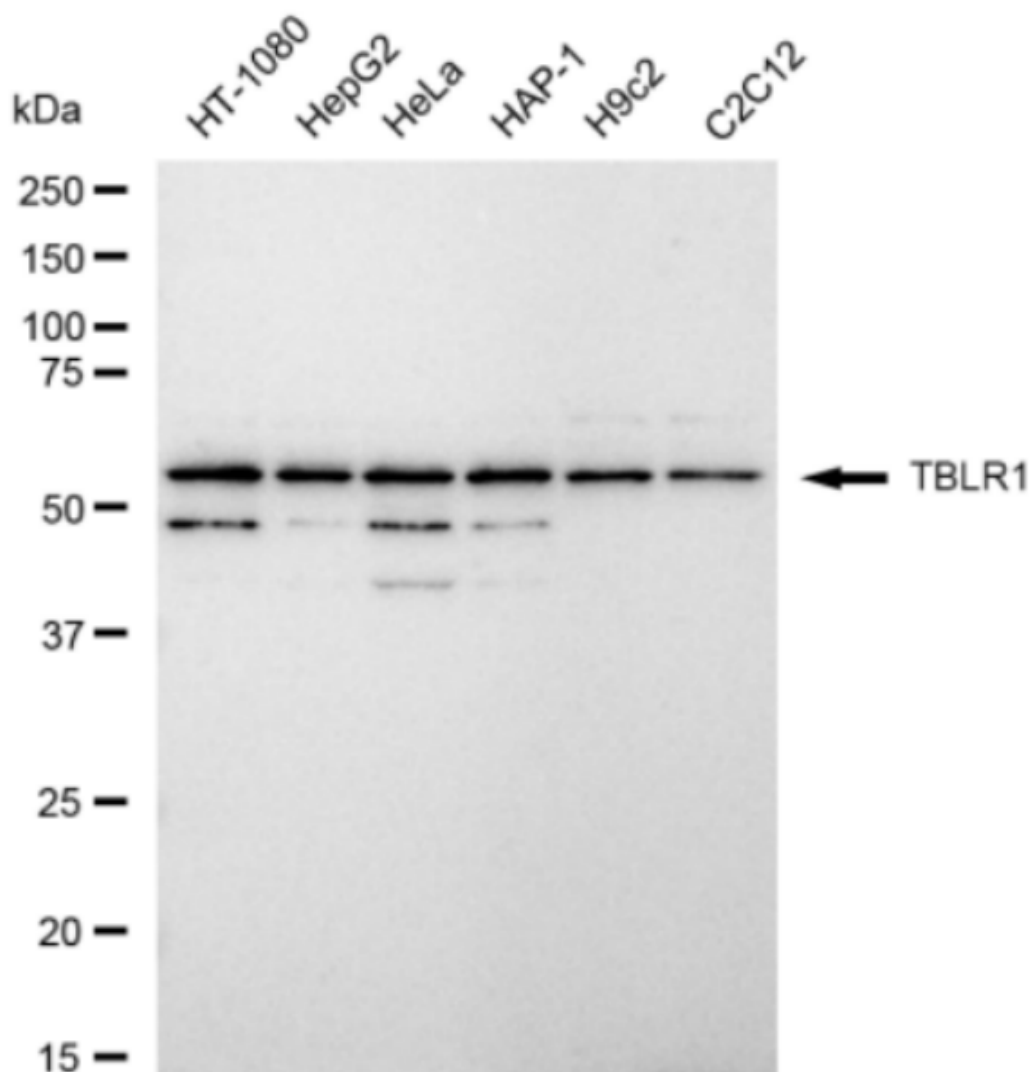
SALES@GENUINBIOTECH.COM
FAX: +1-540-855-7041

WWW.GENUINBIOTECH.COM

Anti-TBLR1 Recombinant Rabbit Monoclonal Antibody

PAGE 3

gain: Medium. Scale bar, 20 μ m.



Copyright © 2024 Genuin Biotechnologies LLC

Western blotting analysis using anti-TBLR1 antibody (Cat#1872). Total cell lysates (30 μ g) from various cell lines were loaded and separated by SDS-PAGE. The blot was incubated with anti-TBLR1 antibody (Cat#1872, 1:5,000) and HRP-conjugated goat anti-rabbit secondary antibody (Cat#201, 1:20,000) respectively. Image was developed using FeQ™ ECL Substrate Kit (Cat#226).

SUPPORT

SUPPORT@GENUINBIOTECH.COM
TEL: +1-540-855-7041

ORDERS

SALES@GENUINBIOTECH.COM
FAX: +1-540-855-7041

WWW.GENUINBIOTECH.COM