

# Anti-14-3-3 Recombinant Rabbit Monoclonal Antibody



**Catalog #: 1881**

## Aliases

YWHAB; Tyrosine 3-Monooxygenase/Tryptophan 5-Monooxygenase Activation Protein Beta; Tyrosine 3-Monooxygenase/Tryptophan 5-Monooxygenase Activation Protein, Alpha Polypeptide; Tyrosine 3-Monooxygenase/Tryptophan 5-Monooxygenase Activation Protein, Beta Polypeptide; 14-3-3 Protein Beta/Alpha; 14-3-3 Alpha; Protein 1054; KCIP-1; YWHAA; Protein Kinase C Inhibitor Protein-1; Protein Kinase C Inhibitor Protein 1; Epididymis Secretory Protein Li 1; 14-3-3 Beta; HEL-S-1; GW128; HS1; YWHAZ; Tyrosine 3-Monooxygenase/Tryptophan 5-Monooxygenase Activation Protein Zeta; KCIP-1; Tyrosine 3-Monooxygenase/Tryptophan 5-Monooxygenase Activation Protein, Delta Polypeptide; Tyrosine 3-Monooxygenase/Tryptophan 5-Monooxygenase Activation Protein, Zeta Polypeptide; 14-3-3 Protein Zeta/Delta; 14-3-3 Delta; 14-3-3-Zeta; 14-3-3 Zeta; YWHAD; Tyrosine 3/Tryptophan 5 -Monooxygenase Activation Protein, Zeta Polypeptide; 14-3-3 Protein/Cytosolic Phospholipase A2; Protein Kinase C Inhibitor Protein-1; Protein Kinase C Inhibitor Protein 1; Epididymis Secretory Protein Li 93; Epididymis Secretory Protein Li 3; Epididymis Luminal Protein 4; Phospholipase A2; 14-3-3-ZETA; HEL-S-93; HEL-S-3; POPCHAS; HEL4

## Background

Gene Name: YWHAB/YWHAZ

NCBI Gene Entry: [7529/7534](#)

UniProt Entry: [P31946/P63104](#)

## Application Information

Molecular Weight: Predicted, 28 kDa; observed, 28 kDa

Clonality: Rabbit monoclonal antibody

Clone ID: 23GB4830

Species Reactivity: Human, mouse, rat

Applications Tested: Western blotting (WB), flow cytometry (FCM), immunocytochemistry (IC)

## Immunogen

A synthesized peptide derived from human 14-3-3

## Isotype

Rabbit IgG

## Storage Buffer

Supplied in PBS (pH 7.4) containing 50% glycerol, and 0.02% sodium azide.

---

### SUPPORT

SUPPORT@GENUINBIOTECH.COM  
TEL: +1-540-855-7041

### ORDERS

SALES@GENUINBIOTECH.COM  
FAX: +1-540-855-7041

[WWW.GENUINBIOTECH.COM](http://WWW.GENUINBIOTECH.COM)

# Anti-14-3-3 Recombinant Rabbit Monoclonal Antibody

PAGE 2

## Storage

Store at -20 °C for one year.

## Recommended Dilutions

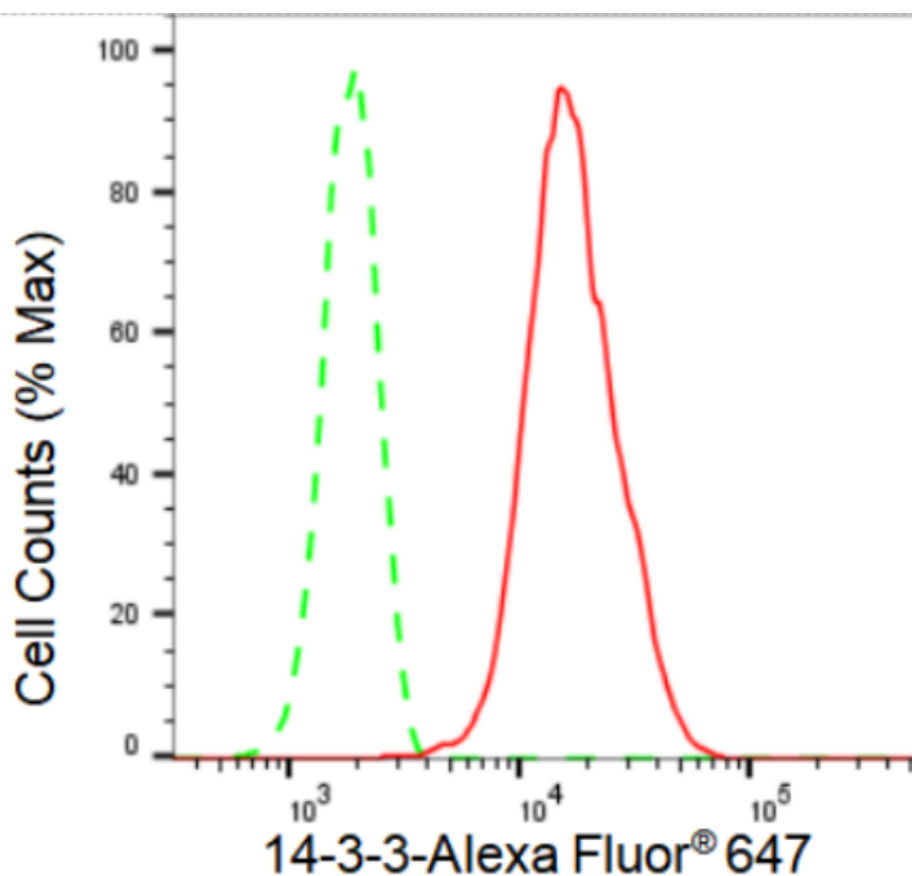
Western Blotting (WB): 1:1,000-1:5,000

Flow Cytometry (FCM): 1:2,000

Immunocytochemistry (IC): 1:100-1:1,000

**Note:** This product is for research use only.

## Validation Data



Copyright ©2024 Genuin Biotechnologies LLC

Flow cytometric analysis of 14-3-3 expression in HepG2 cells using 14-3-3 antibody (Cat#1881, 1:2,000). Green, isotype control; red, 14-3-3.

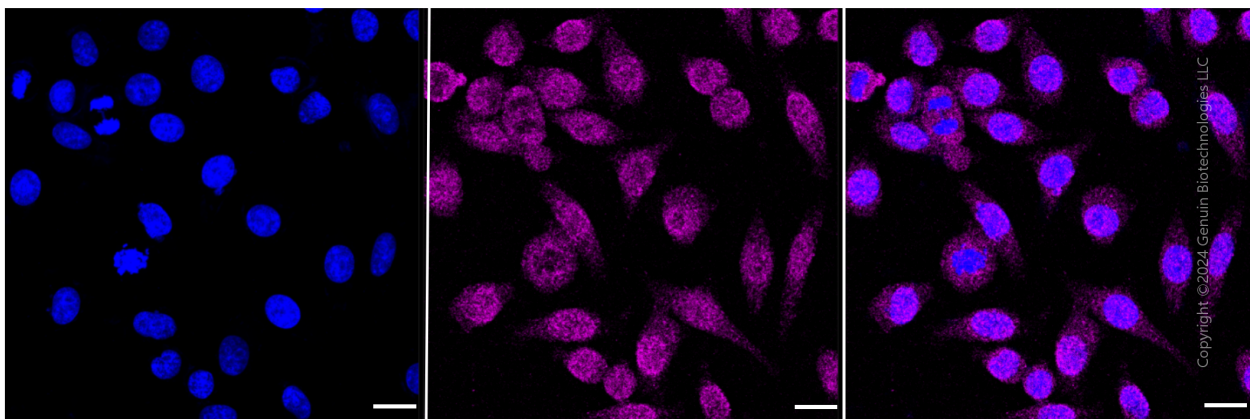
### SUPPORT

SUPPORT@GENUINBIOTECH.COM  
TEL: +1-540-855-7041

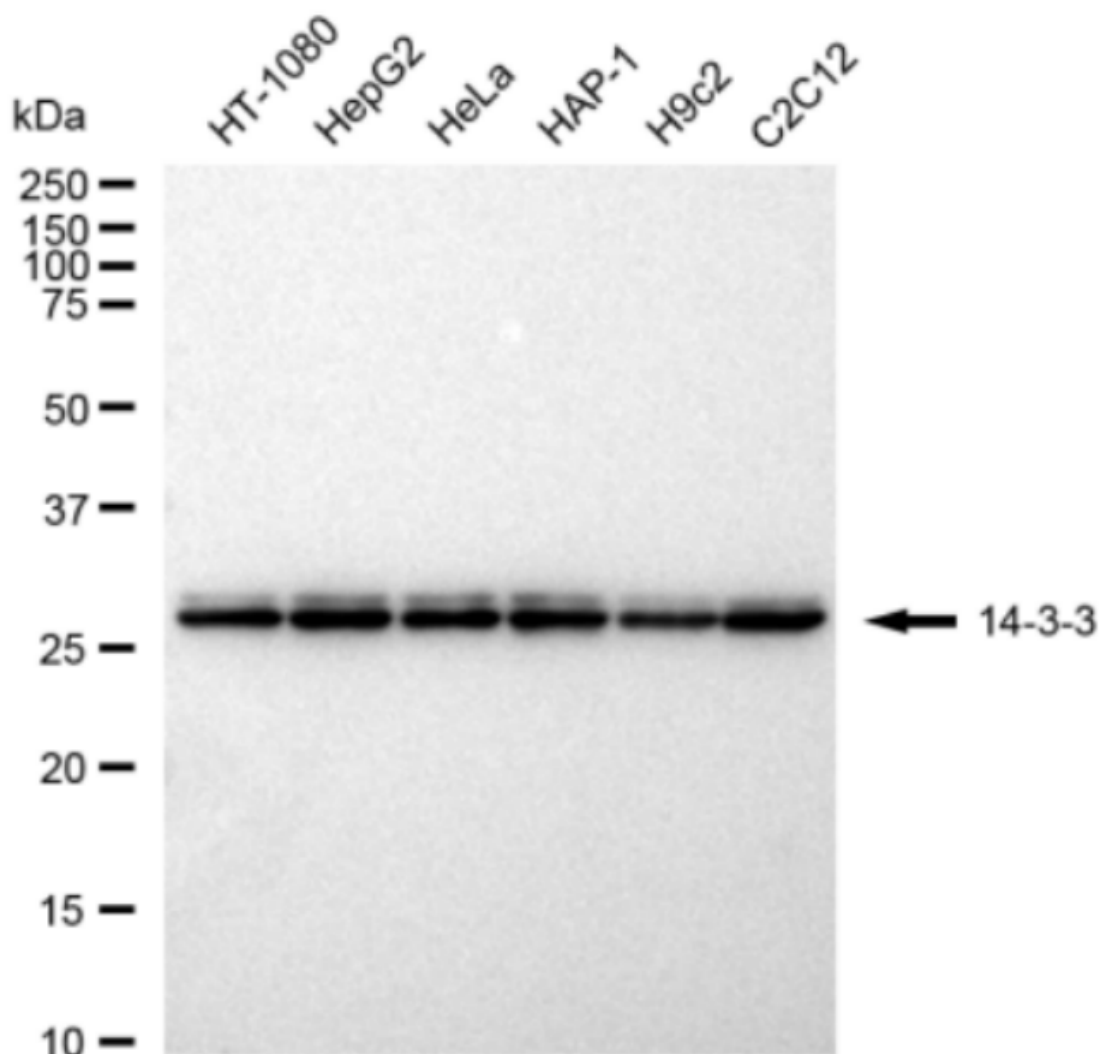
### ORDERS

SALES@GENUINBIOTECH.COM  
FAX: +1-540-855-7041

[WWW.GENUINBIOTECH.COM](http://WWW.GENUINBIOTECH.COM)



Immunocytochemical staining of HepG2 cells with anti-14-3-3 Tubulin antibody (Cat#1881, 1:1,000). Nuclei were stained blue with DAPI; 14-3-3 was stained magenta with Alexa Fluor® 647. Images were taken using Leica stellaris 5. Protein abundance based on laser Intensity and smart gain: Low. Scale bar: 20  $\mu$ m.



Copyright ©2024 Genuin Biotechnologies LLC

Western blotting analysis using anti-14-3-3 antibody (Cat#1881). Total cell lysates (30 µg) from various cell lines were loaded and separated by SDS-PAGE. The blot was incubated with anti-14-3-3 antibody (Cat#1881, 1:5,000) and HRP-conjugated goat anti-rabbit secondary antibody (Cat#201, 1:20,000) respectively. Image was developed using FeQ™ ECL Substrate Kit (Cat#226).