

Anti-Aldehyde dehydrogenase 2 Recombinant Rabbit Monoclonal Antibody



Catalog #: 1886

Aliases

ALDH2; Aldehyde Dehydrogenase 2 Family Member; Aldehyde Dehydrogenase 2 Family (Mitochondrial); Aldehyde Dehydrogenase, Mitochondrial; ALDH Class; EC 1.2.1.3; ALDH-E2; ALDHI; ALDM; Nucleus-Encoded Mitochondrial Aldehyde Dehydrogenase; Epididymis Secretory Sperm Binding Protein; Acetaldehyde Dehydrogenase; Liver Mitochondrial ALDH; EC 1.2.1

Background

Gene Name: ALDH2

NCBI Gene Entry: [217](#)

UniProt Entry: [P05091](#)

Application Information

Molecular Weight: Predicted, 56 kDa; observed, 56 kDa

Clonality: Rabbit monoclonal antibody

Clone ID: 23GB4810

Species Reactivity: Human, mouse, rat

Applications Tested: Western blotting (WB), immunocytochemistry (IC), flow cytometry (FCM)

Immunogen

A synthesized peptide derived from human ALDH2

Isotype

Rabbit IgG

Storage Buffer

Supplied in PBS (pH 7.4) containing 50% glycerol, and 0.02% sodium azide.

Storage

Store at -20 °C for one year.

Recommended Dilutions

Western Blotting (WB): 1:1,000-1:5,000

Immunocytochemistry (IC): 1:100-1:1,000

Flow Cytometry (FCM): 1:2,000

SUPPORT

SUPPORT@GENUINBIOTECH.COM
TEL: +1-540-855-7041

ORDERS

SALES@GENUINBIOTECH.COM
FAX: +1-540-855-7041

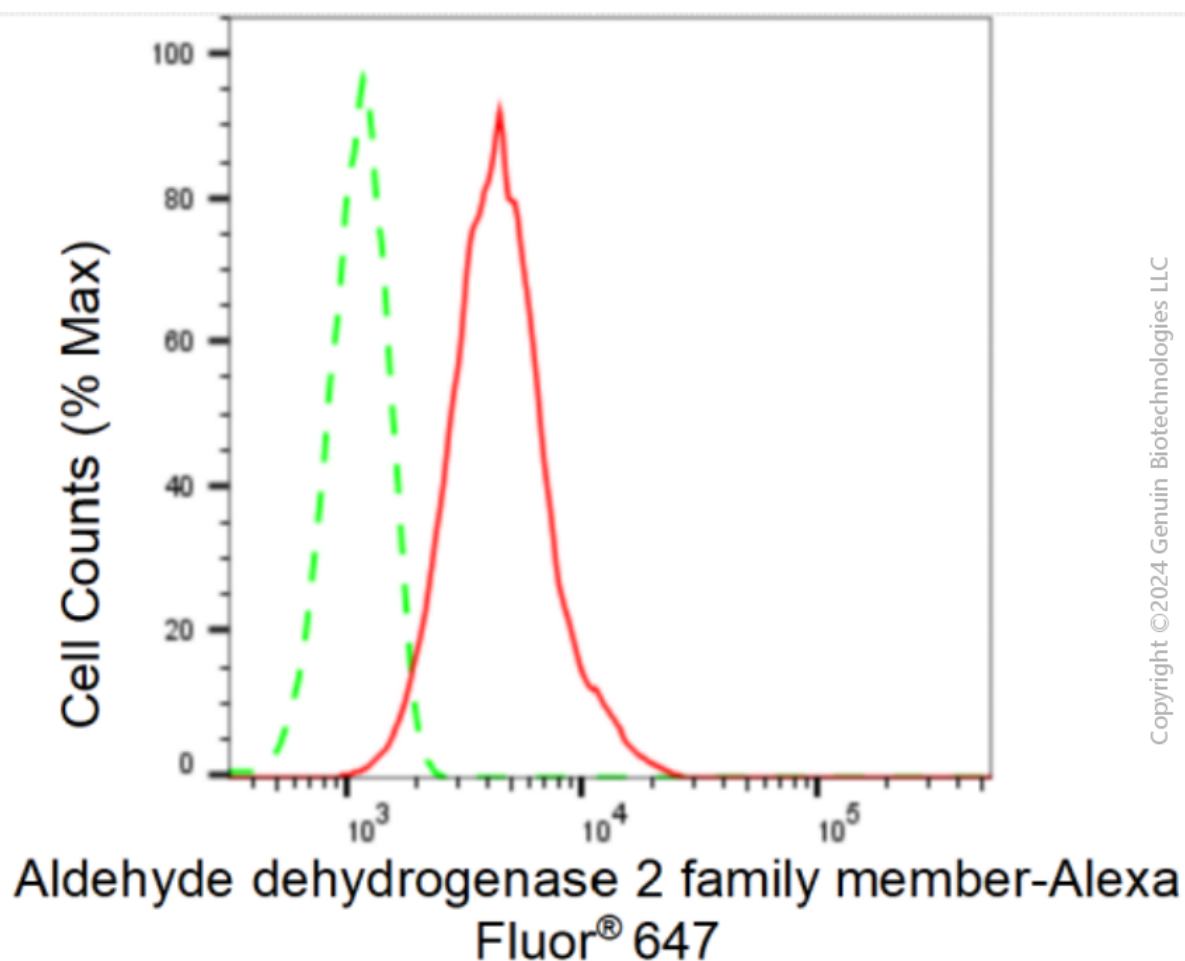
WWW.GENUINBIOTECH.COM

Anti-Aldehyde dehydrogenase 2 Recombinant Rabbit Monoclonal Antibody

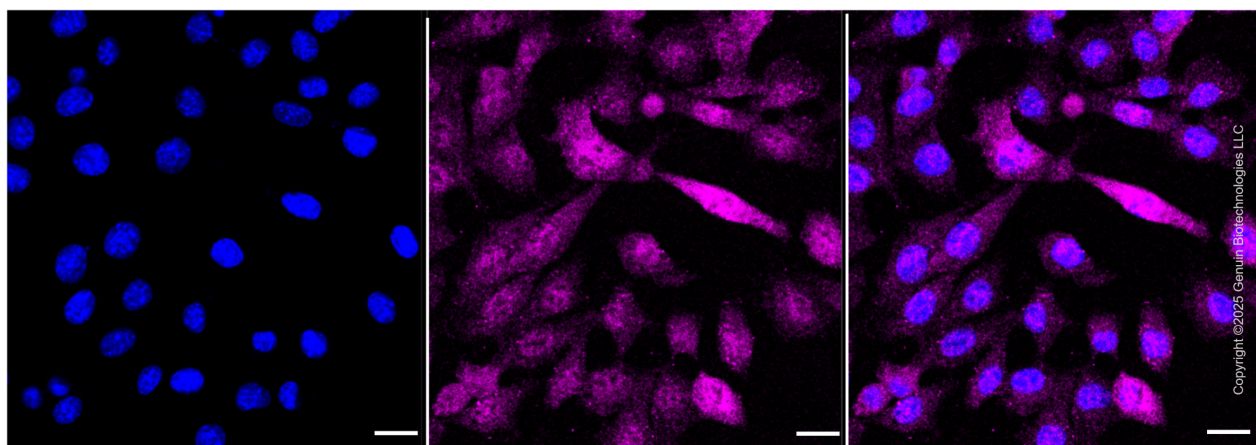
PAGE 2

Note: This product is for research use only.

Validation Data



Flow cytometric analysis of Aldehyde dehydrogenase 2 family member expression in C2C12 cells using Aldehyde dehydrogenase 2 family member antibody (1886, 1:2,000). Green, isotype control; red, Aldehyde dehydrogenase 2 family member.



SUPPORT

SUPPORT@GENUINBIOTECH.COM
TEL: +1-540-855-7041

ORDERS

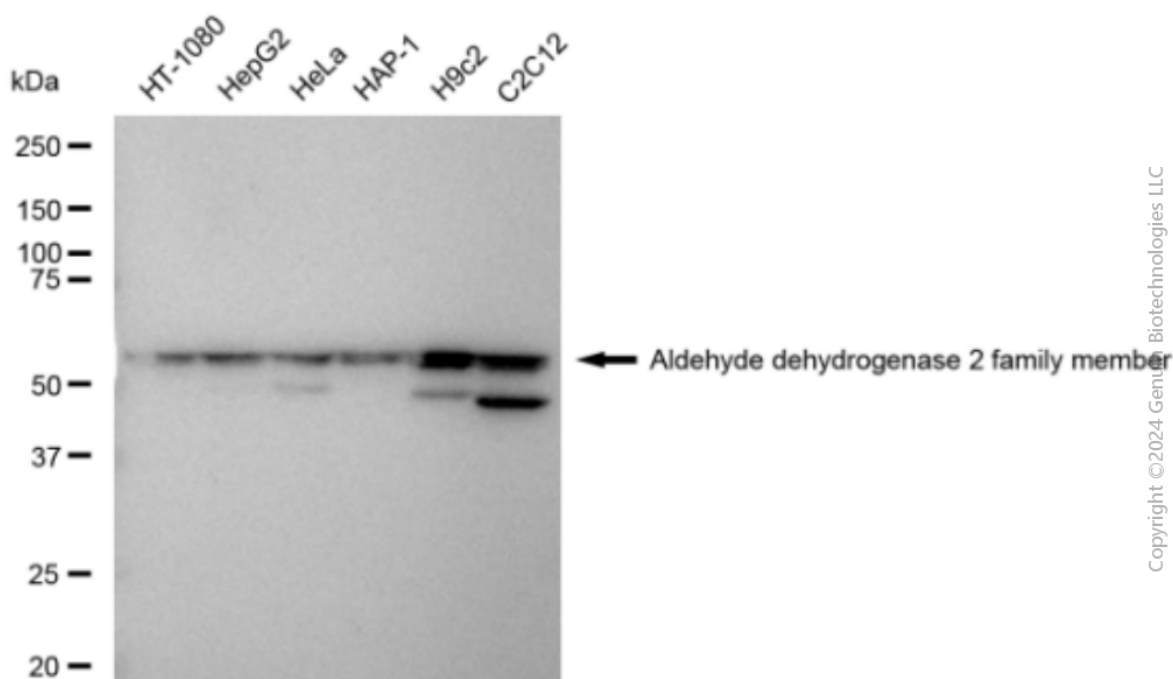
SALES@GENUINBIOTECH.COM
FAX: +1-540-855-7041

WWW.GENUINBIOTECH.COM

Anti-Aldehyde dehydrogenase 2 Recombinant Rabbit Monoclonal Antibody

PAGE 3

Immunocytochemical staining of HepG2 cells with anti-Aldehyde dehydrogenase 2 family member antibody (Cat#1886, 1:1,000). Nuclei were stained blue with anti-DAPI; Aldehyde dehydrogenase 2 family member was stained magenta with Alexa Fluor® 647. Images were taken using Leica stellaris 5. Protein abundance based on laser Intensity and smart gain: Low. Scale bar, 20 μ m.



Western blotting analysis using anti-Aldehyde dehydrogenase 2 family member antibody (Cat#1886). Total cell lysates (30 μ g) from various cell lines were loaded and separated by SDS-PAGE. The blot was incubated with anti-Aldehyde dehydrogenase 2 family member antibody (Cat#1886, 1:5,000) and HRP-conjugated goat anti-rabbit secondary antibody (Cat#201, 1:20,000) respectively. Image was developed using FeQ™ ECL Substrate Kit (Cat#226).

SUPPORT

SUPPORT@GENUINBIOTECH.COM
TEL: +1-540-855-7041

ORDERS

SALES@GENUINBIOTECH.COM
FAX: +1-540-855-7041

WWW.GENUINBIOTECH.COM