

# Anti-BAG2 Recombinant Rabbit Monoclonal Antibody



**Catalog #: 1889**

## Aliases

BAG2; BAG Cochaperone 2; BAG Family Molecular Chaperone Regulator 2; Bcl-2-Associated Athanogene 2; BCL2 Associated Athanogene 2; BAG-2; DJ417I1.2 (BAG-Family Molecular Chaperone Regulator 2); DJ417I1.2

## Background

Gene Name: BAG2

NCBI Gene Entry: [9532](#)

UniProt Entry: [O95816](#)

## Application Information

Molecular Weight: Predicted, 24 kDa; observed, 24 kDa

Clonality: Rabbit monoclonal antibody

Clone ID: 23GB7975

Species Reactivity: Human, mouse, rat

Applications Tested: Western blotting (WB), immunocytochemistry (IC)

## Immunogen

A synthesized peptide derived from human BAG2

## Isotype

Rabbit IgG

## Storage Buffer

Supplied in PBS (pH 7.4) containing 50% glycerol, and 0.02% sodium azide.

## Storage

Store at -20 °C for one year.

## Recommended Dilutions

Western Blotting (WB): 1:1,000-1:5,000

Immunocytochemistry (IC): 1:100-1:1,000

**Note:** This product is for research use only.

## Validation Data

---

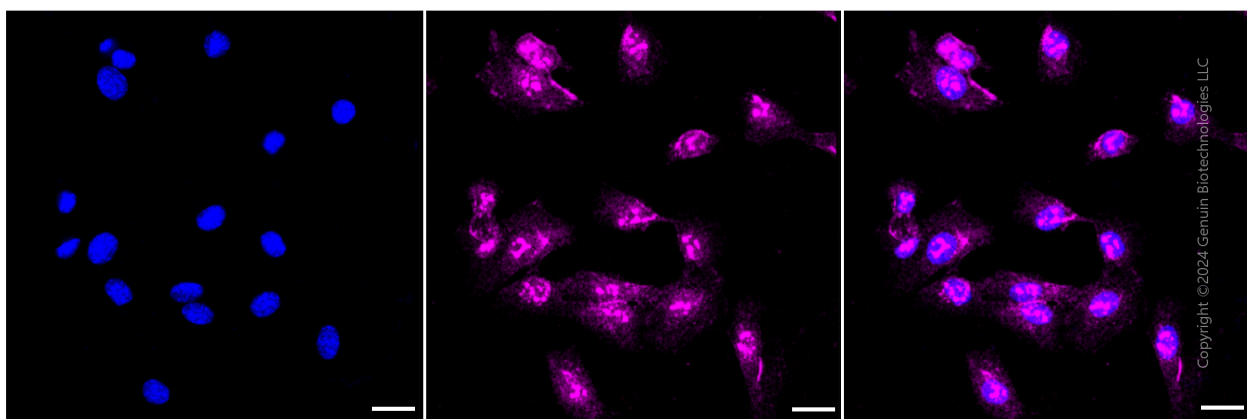
### SUPPORT

SUPPORT@GENUINBIOTECH.COM  
TEL: +1-540-855-7041

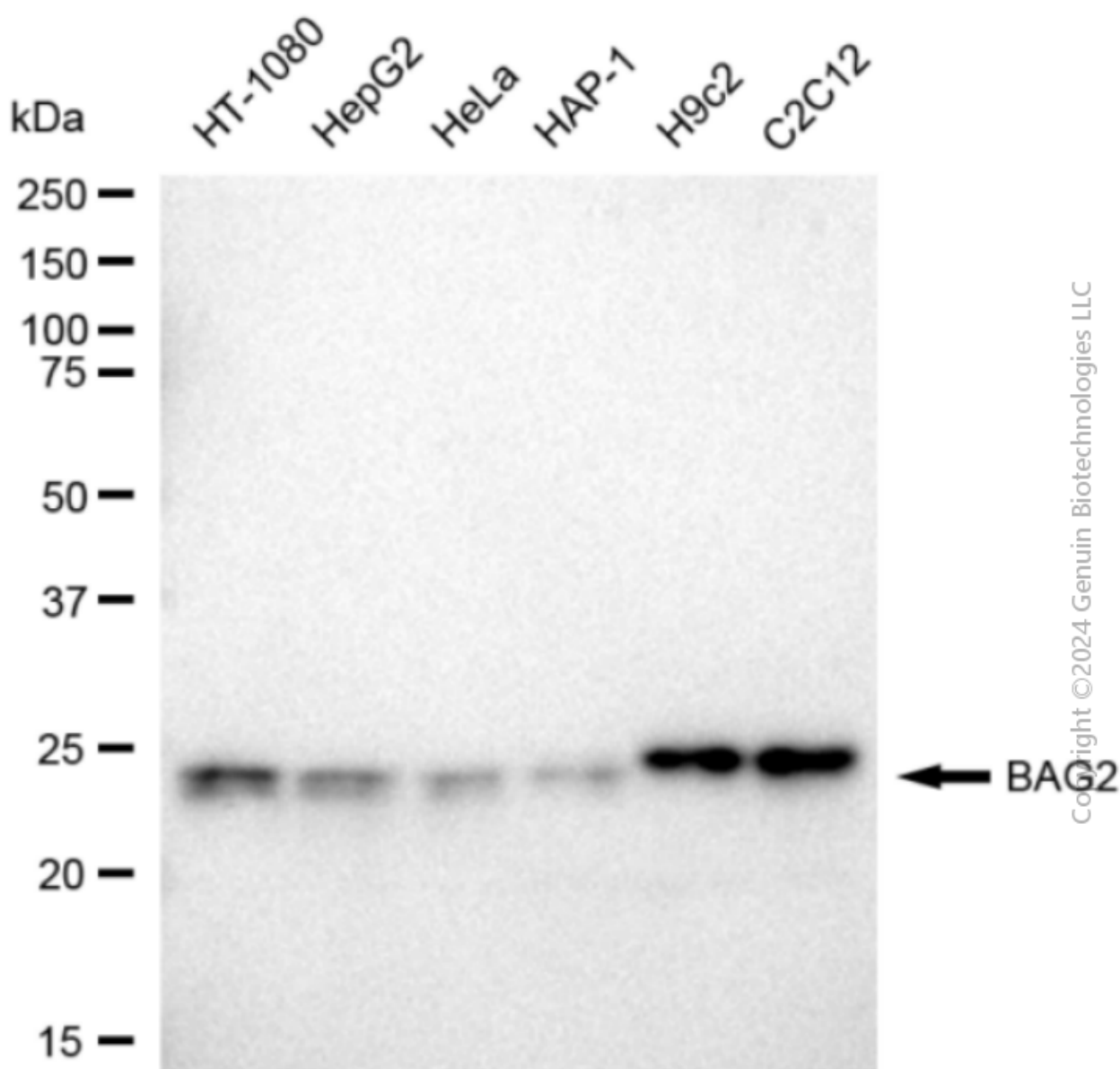
### ORDERS

SALES@GENUINBIOTECH.COM  
FAX: +1-540-855-7041

[WWW.GENUINBIOTECH.COM](http://WWW.GENUINBIOTECH.COM)



Immunocytochemical staining of C2C12 cells with BAG2 antibody (Cat#1889, 1:1,000). Nuclei were stained blue with DAPI; BAG2 was stained magenta with Alexa Fluor® 647. Images were taken using Leica stellaris 5. Protein abundance based on laser Intensity and smart gain: Medium. Scale bar: 20  $\mu$ m.



Western blotting analysis using anti-BAG2 antibody (Cat#1889). Total cell lysates (30 µg) from various cell lines were loaded and separated by SDS-PAGE. The blot was incubated with anti-BAG2 antibody (Cat#1889, 1:5,000) and HRP-conjugated goat anti-rabbit secondary antibody (Cat#201, 1:20,000) respectively. Image was developed using FeQ™ ECL Substrate Kit (Cat#226).