

# Anti-BCL2 related protein A1 Recombinant Rabbit Monoclonal Antibody



**Catalog #: 1890**

## Aliases

BCL2A1; BCL2 Related Protein A1; BCL2L5; BFL1; GRS; ACC-1; ACC-2; HBPA1; ACC2; ACC1; Hemopoietic-Specific Early Response Protein; Bcl-2-Related Protein A1; Bcl-2-Like Protein 5; Protein BFL-1; Bcl2-L-5; Hematopoietic BCL2-Related Protein A1; Protein GRS

## Background

Gene Name: BCL2A1

NCBI Gene Entry: [597](#)

UniProt Entry: [Q16548](#)

## Application Information

Molecular Weight: Predicted, 20 kDa; observed, 27 kDa

Clonality: Rabbit monoclonal antibody

Clone ID: 23GB4820

Species Reactivity: Human

Applications Tested: Western blotting (WB), immunocytochemistry (IC), flow cytometry (FCM)

## Immunogen

A synthesized peptide derived from human BCL2A1

## Isotype

Rabbit IgG

## Storage Buffer

Supplied in PBS (pH 7.4) containing 50% glycerol, and 0.02% sodium azide.

## Storage

Store at -20 °C for one year.

## Recommended Dilutions

Western Blotting (WB): 1:1,000-1:5,000

Immunocytochemistry (IC): 1:100-1:1,000

Flow Cytometry (FCM): 1:2,000

**Note:** This product is for research use only.

---

### SUPPORT

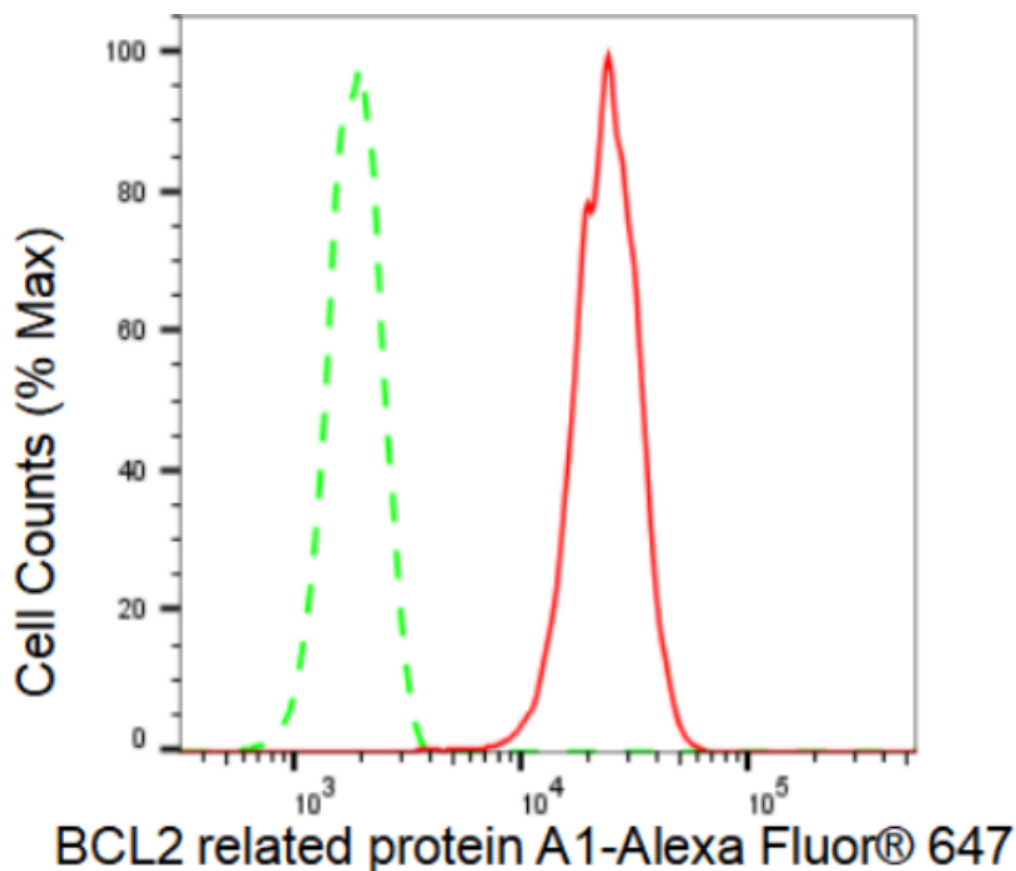
SUPPORT@GENUINBIOTECH.COM  
TEL: +1-540-855-7041

### ORDERS

SALES@GENUINBIOTECH.COM  
FAX: +1-540-855-7041

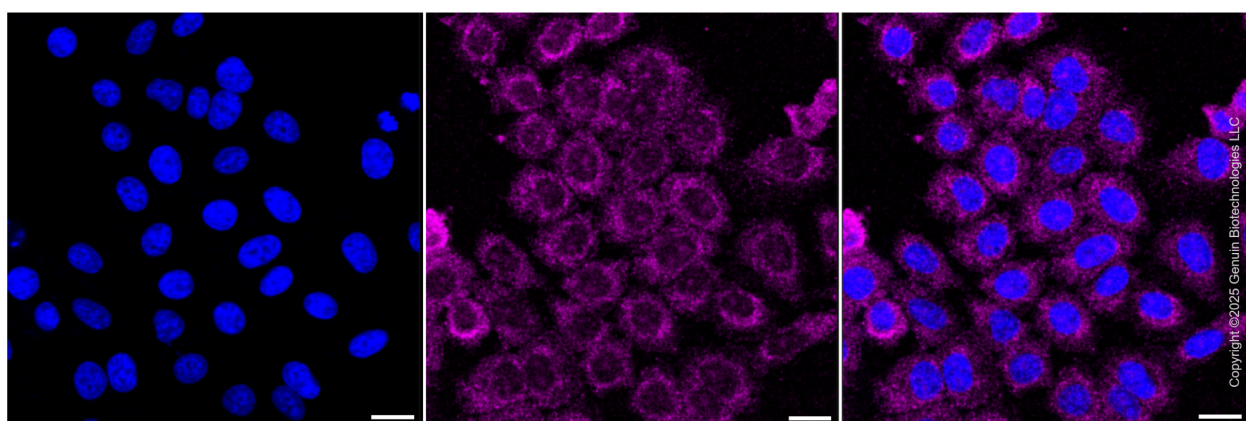
[WWW.GENUINBIOTECH.COM](http://WWW.GENUINBIOTECH.COM)

**Validation Data**



Copyright ©2024 Genuin Biotechnologies LLC

Flow cytometric analysis of BCL2 related protein A1 expression in HepG2 cells using BCL2 related protein A1 antibody (Cat#1890, 1:2,000). Green, isotype control; red, BCL2 related protein A1.



Immunocytochemical staining of HepG2 cells with anti-BCL2 related protein A1 antibody (Cat #1890, 1:1,000) . Nuclei were stained blue with DAPI; BCL2 related protein A1 was stained magenta with Alexa Fluor® 647. Images were taken using Leica stellaris 5. Protein abundance based on laser Intensity and smart gain: Medium. Scale bar, 20 µm.

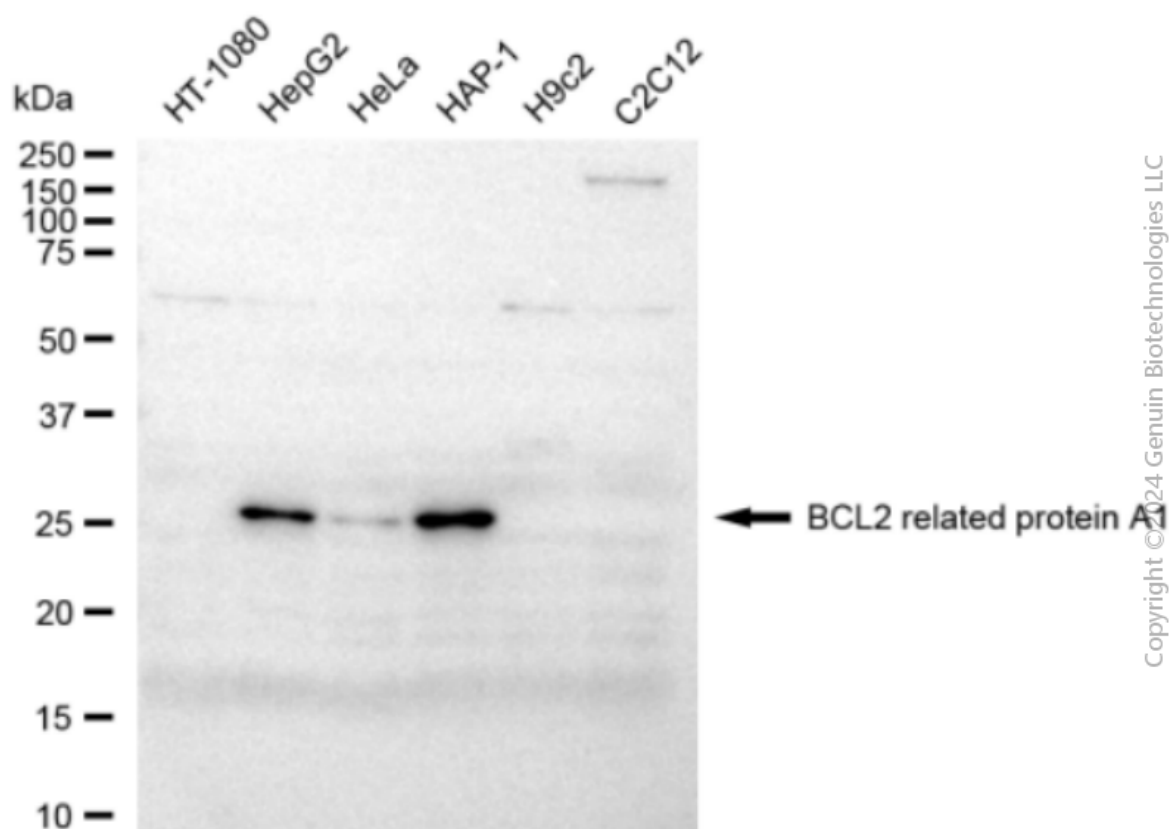
**SUPPORT**

SUPPORT@GENUINBIOTECH.COM  
TEL: +1-540-855-7041

**ORDERS**

SALES@GENUINBIOTECH.COM  
FAX: +1-540-855-7041

**WWW.GENUINBIOTECH.COM**



Western blotting analysis using anti-BCL2 related protein A1 antibody (Cat#1890). Total cell lysates (30  $\mu$ g) from various cell lines were loaded and separated by SDS-PAGE. The blot was incubated with anti-BCL2 related protein A1 antibody (Cat#1890, 1:5,000) and HRP-conjugated goat anti-rabbit secondary antibody (Cat#201, 1:20,000) respectively. Image was developed using FeQ™ ECL Substrate Kit (Cat#226).