

Anti-Bone morphogenetic protein 4 Recombinant Rabbit Monoclonal Antibody



Catalog #: 1891

Aliases

BMP4; Bone Morphogenetic Protein 4; BMP2B; Bone Morphogenetic Protein 2B; BMP2B1; MCOPS6; BMP-2B; OFC11; BMP-4; ZYME; DVR4

Background

Gene Name: BMP4

NCBI Gene Entry: [652](#)

UniProt Entry: [P12644](#)

Application Information

Molecular Weight: Predicted, 47 kDa; observed, 47 kDa

Clonality: Rabbit monoclonal antibody

Clone ID: 23GB4795

Species Reactivity: Human

Applications Tested: Western blotting (WB), immunocytochemistry (IC), flow cytometry (FCM)

Immunogen

A synthesized peptide derived from human BMP4

Isotype

Rabbit IgG

Storage Buffer

Supplied in PBS (pH 7.4) containing 50% glycerol, and 0.02% sodium azide.

Storage

Store at -20 °C for one year.

Recommended Dilutions

Western Blotting (WB): 1:1,000-1:5,000

Immunocytochemistry (IC): 1:100-1:1,000

Flow Cytometry (FCM): 1:2,000

Note: This product is for research use only.

Validation Data

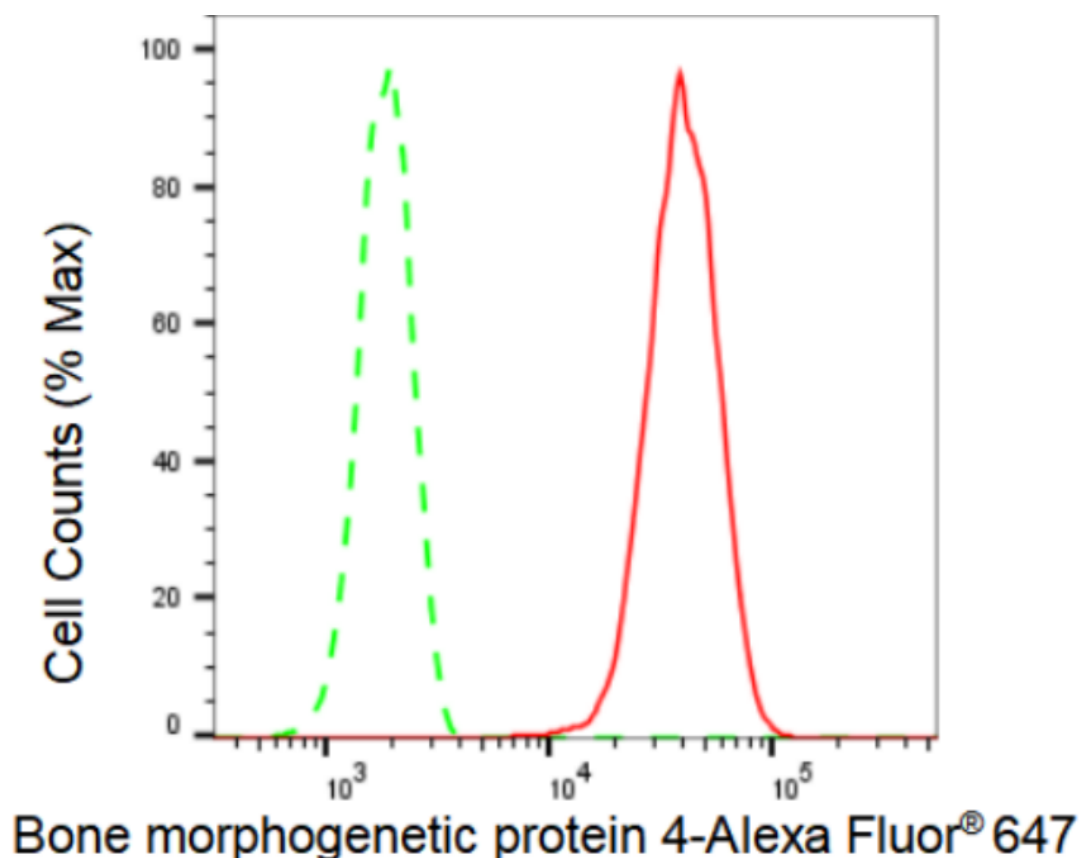
SUPPORT

SUPPORT@GENUINBIOTECH.COM
TEL: +1-540-855-7041

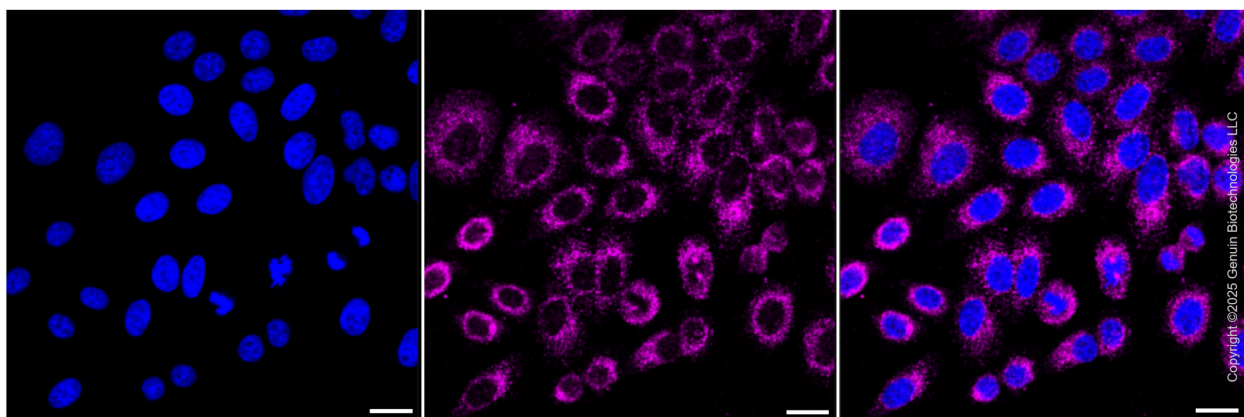
ORDERS

SALES@GENUINBIOTECH.COM
FAX: +1-540-855-7041

WWW.GENUINBIOTECH.COM



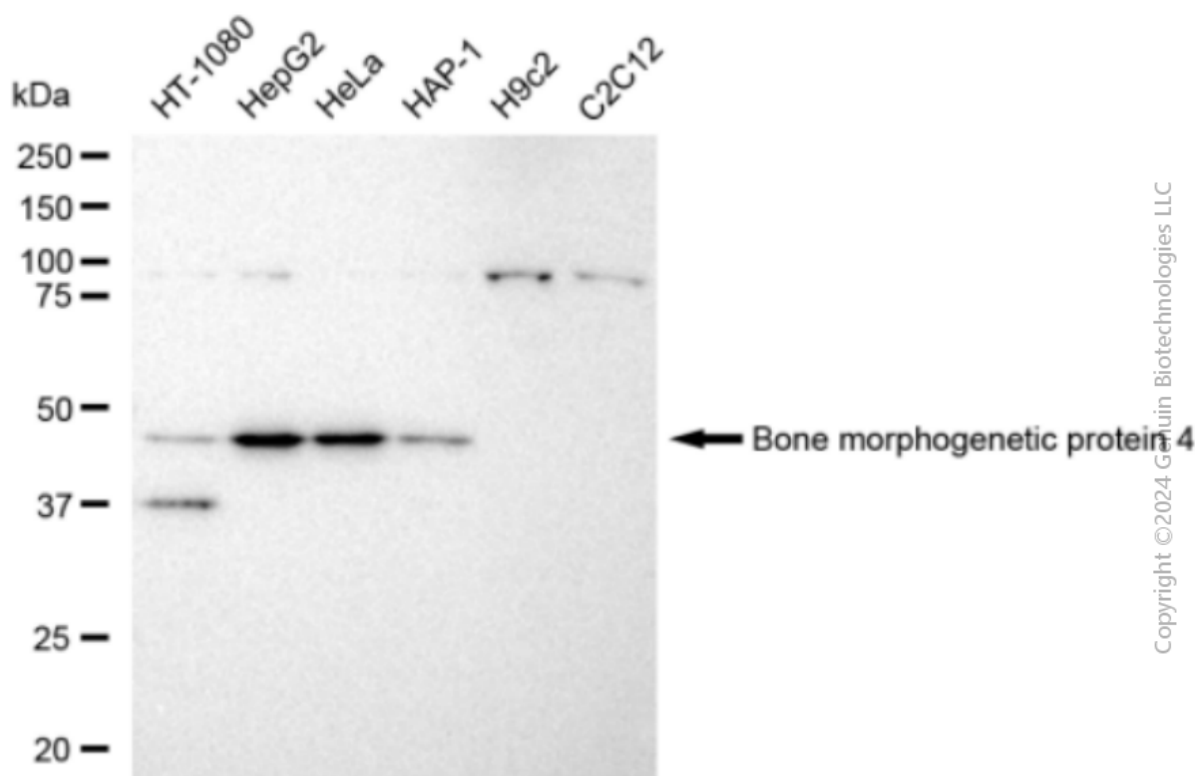
Flow cytometric analysis of Bone morphogenetic protein 4 expression in HepG2 cells using Bone morphogenetic protein 4 antibody (Cat#1891, 1:2,000). Green, isotype control; red, Bone morphogenetic protein 4.



Immunocytochemical staining of HepG2 cells with anti-Bone morphogenetic protein 4 antibody (Cat #1891, 1:1,000) . Nuclei were stained blue with DAPI; Bone morphogenetic protein 4 was stained magenta with Alexa Fluor® 647. Images were taken using Leica stellaris 5. Protein abundance based on laser Intensity and smart gain: Medium. Scale bar, 20 µm.

Anti-Bone morphogenetic protein 4 Recombinant Rabbit Monoclonal Antibody

PAGE 3



Western blotting analysis using anti-Bone morphogenetic protein 4 antibody (Cat#1891). Total cell lysates (30 μ g) from various cell lines were loaded and separated by SDS-PAGE. The blot was incubated with anti-Bone morphogenetic protein 4 antibody (Cat#1891, 1:5,000) and HRP-conjugated goat anti-rabbit secondary antibody (Cat#201, 1:20,000) respectively. Image was developed using FeQ™ ECL Substrate Kit (Cat#226).

SUPPORT

SUPPORT@GENUINBIOTECH.COM
TEL: +1-540-855-7041

ORDERS

SALES@GENUINBIOTECH.COM
FAX: +1-540-855-7041

WWW.GENUINBIOTECH.COM