

Anti-BCL2 interacting protein 1 Recombinant Rabbit Monoclonal Antibody



Catalog #: 1893

Aliases

BNIP1; BCL2 Interacting Protein 1; SEC20; NIP1; BCL2/Adenovirus E1B 19 KDa Protein-Interacting Protein 1; BCL2/Adenovirus E1B 19kDa Interacting Protein 1; Transformation-Related Gene 8 Protein; Vesicle Transport Protein SEC20; TRG-8; SEC20L; Nip1

Background

Gene Name: BNIP1

NCBI Gene Entry: [662](#)

UniProt Entry: [Q12981](#)

Application Information

Molecular Weight: Predicted, 26 kDa; observed, 26 kDa

Clonality: Rabbit monoclonal antibody

Clone ID: 23GB4870

Species Reactivity: Human, mouse, rat

Applications Tested: Western blotting (WB), immunocytochemistry (IC), flow cytometry (FCM)

Immunogen

A synthesized peptide derived from human BNIP1

Isotype

Rabbit IgG

Storage Buffer

Supplied in PBS (pH 7.4) containing 50% glycerol, and 0.02% sodium azide.

Storage

Store at -20 °C for one year.

Recommended Dilutions

Western Blotting (WB): 1:1,000-1:5,000

Immunocytochemistry (IC): 1:100-1:1,000

Flow Cytometry (FCM): 1:2,000

Note: This product is for research use only.

SUPPORT

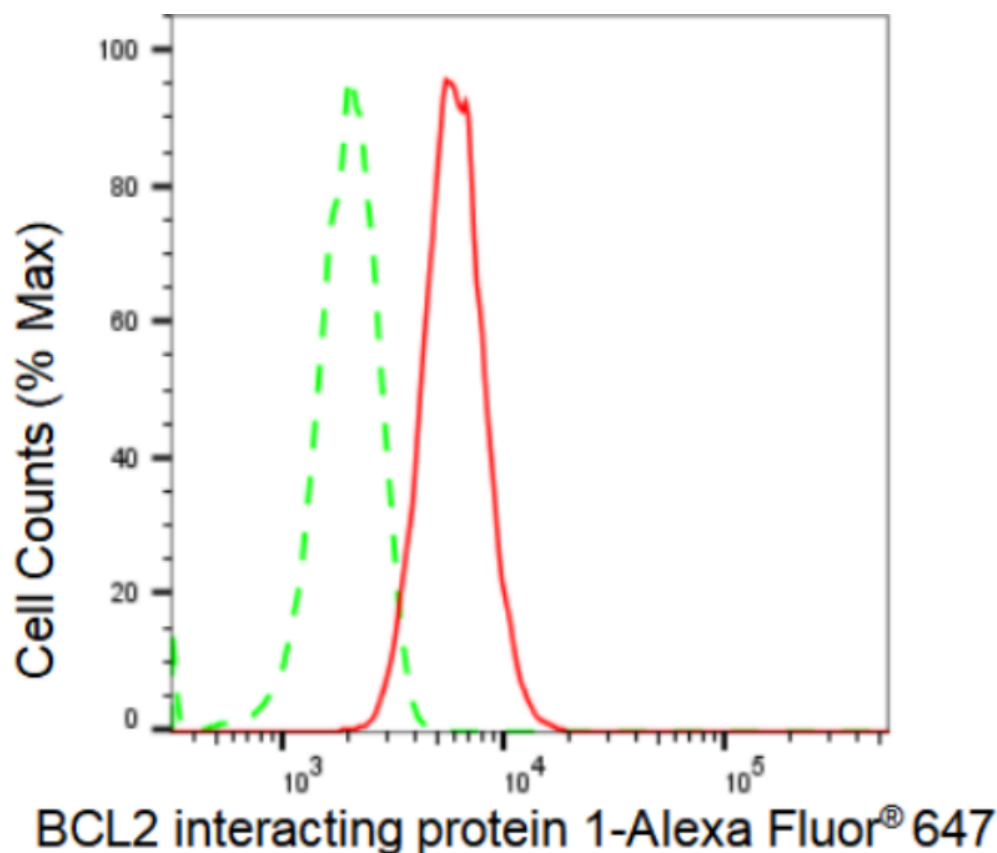
SUPPORT@GENUINBIOTECH.COM
TEL: +1-540-855-7041

ORDERS

SALES@GENUINBIOTECH.COM
FAX: +1-540-855-7041

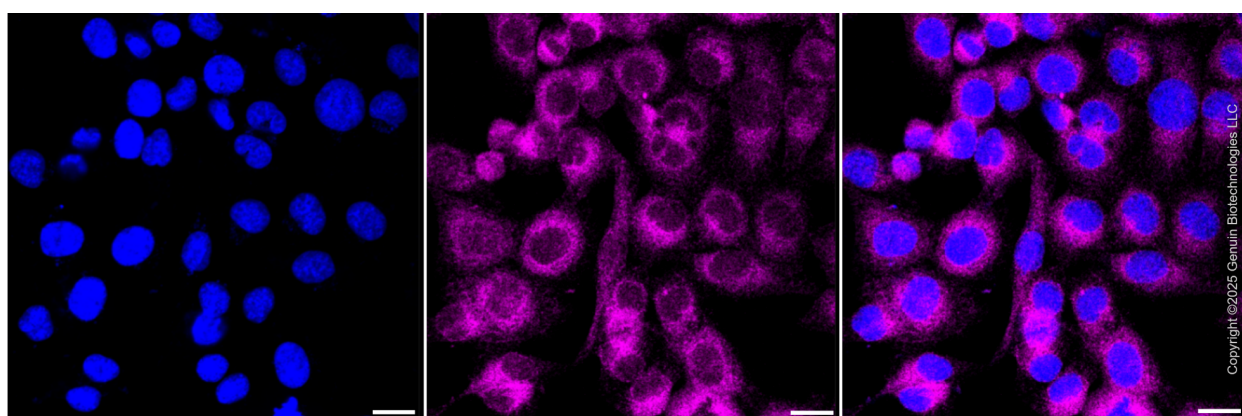
WWW.GENUINBIOTECH.COM

Validation Data



Copyright ©2024 Genuin Biotechnologies LLC

Flow cytometric analysis of BCL2 interacting protein 1 expression in HT-1080 cells using BCL2 interacting protein 1 antibody (Cat#1893, 1:2,000). Green, isotype control; red, BCL2 interacting protein 1.



Immunocytochemical staining of HT-1080 cells with anti-BCL2 interacting protein 1 antibody (Cat #1893, 1:1,000) . Nuclei were stained blue with DAPI; BCL2 interacting protein 1 was stained magenta with Alexa Fluor® 647. Images were taken using Leica stellaris 5. Protein abundance based on laser Intensity and smart gain: Medium. Scale bar, 20 µm.

SUPPORT

SUPPORT@GENUINBIOTECH.COM
TEL: +1-540-855-7041

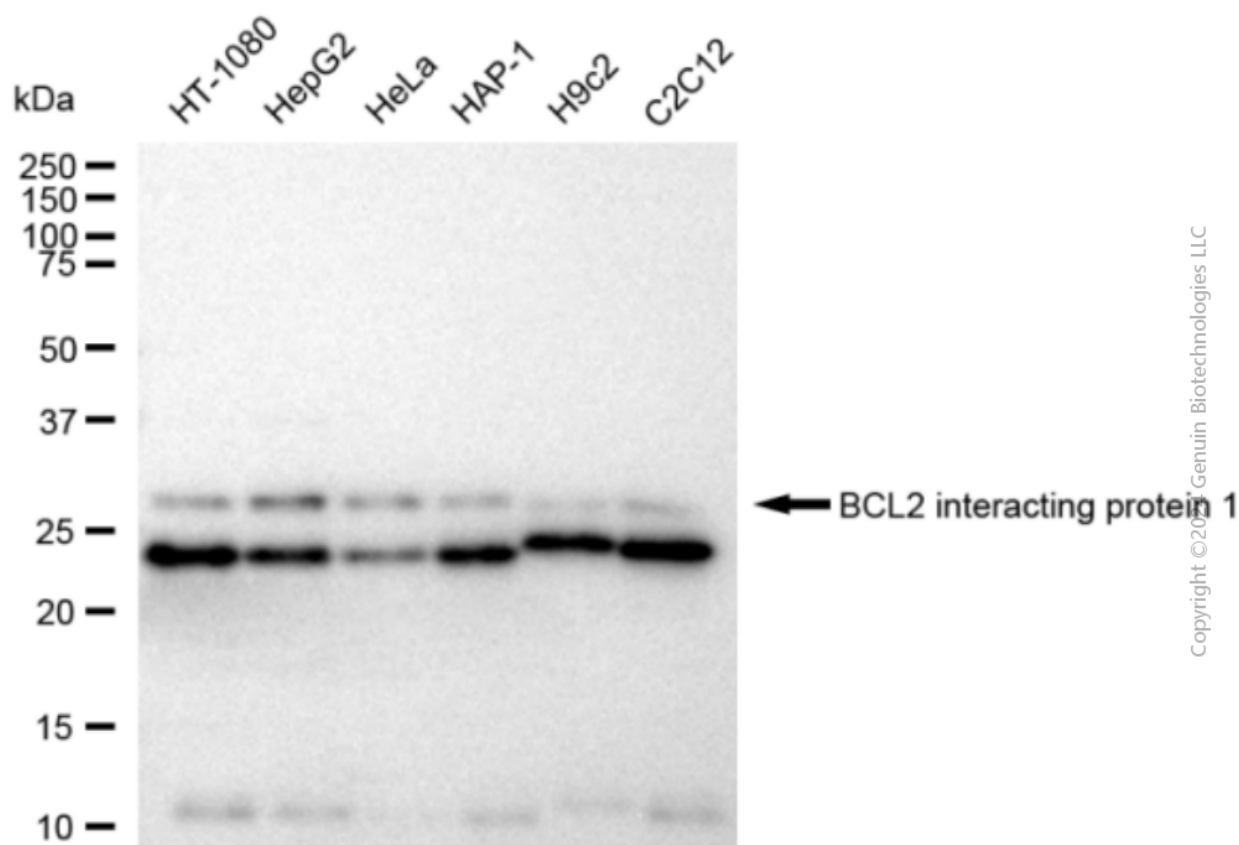
ORDERS

SALES@GENUINBIOTECH.COM
FAX: +1-540-855-7041

WWW.GENUINBIOTECH.COM

Anti-BCL2 interacting protein 1 Recombinant Rabbit Monoclonal Antibody

PAGE 3



Western blotting analysis using anti-BCL2 interacting protein 1 antibody (Cat#1893). Total cell lysates (30 μ g) from various cell lines were loaded and separated by SDS-PAGE. The blot was incubated with anti-BCL2 interacting protein 1 antibody (Cat#1893, 1:5,000) and HRP-conjugated goat anti-rabbit secondary antibody (Cat#201, 1:20,000) respectively. Image was developed using FeQ™ ECL Substrate Kit (Cat#226).

SUPPORT

SUPPORT@GENUINBIOTECH.COM
TEL: +1-540-855-7041

ORDERS

SALES@GENUINBIOTECH.COM
FAX: +1-540-855-7041

WWW.GENUINBIOTECH.COM