

# Anti-Phospho-BTK (Y223) Recombinant Rabbit Monoclonal Antibody



**Catalog #: 1894**

## Aliases

BTK; Bruton Tyrosine Kinase; ATK; PSCTK1; AGMX1; XLA; Bruton Agammaglobulinemia Tyrosine Kinase; Tyrosine-Protein Kinase BTK; Bruton'S Tyrosine Kinase; B-Cell Progenitor Kinase; EC 2.7.10.2; IMD1; BPK; Dominant-Negative Kinase-Deficient Brutons Tyrosine Kinase; Agammaglobulinaemia Tyrosine Kinase; Agammaglobulinemia Tyrosine Kinase; EC 2.7.10; IGHD3; AT

## Background

Gene Name: BTK

NCBI Gene Entry: [695](#)

UniProt Entry: [Q06187](#)

## Application Information

Molecular Weight: Predicted, 76 kDa; observed, 76 kDa

Clonality: Rabbit monoclonal antibody

Clone ID: 23GB4815

Species Reactivity: Human, mouse, rat

Applications Tested: Western blotting (WB), immunocytochemistry (IC)

## Immunogen

A synthesized peptide derived from human Phospho-BTK (Y223)

## Isotype

Rabbit IgG

## Storage Buffer

Supplied in PBS (pH 7.4) containing 50% glycerol, and 0.02% sodium azide.

## Storage

Store at -20 °C for one year.

## Recommended Dilutions

Western Blotting (WB): 1:1,000-1:5,000

Immunocytochemistry (IC): 1:100-1:1,000

---

### SUPPORT

SUPPORT@GENUINBIOTECH.COM  
TEL: +1-540-855-7041

### ORDERS

SALES@GENUINBIOTECH.COM  
FAX: +1-540-855-7041

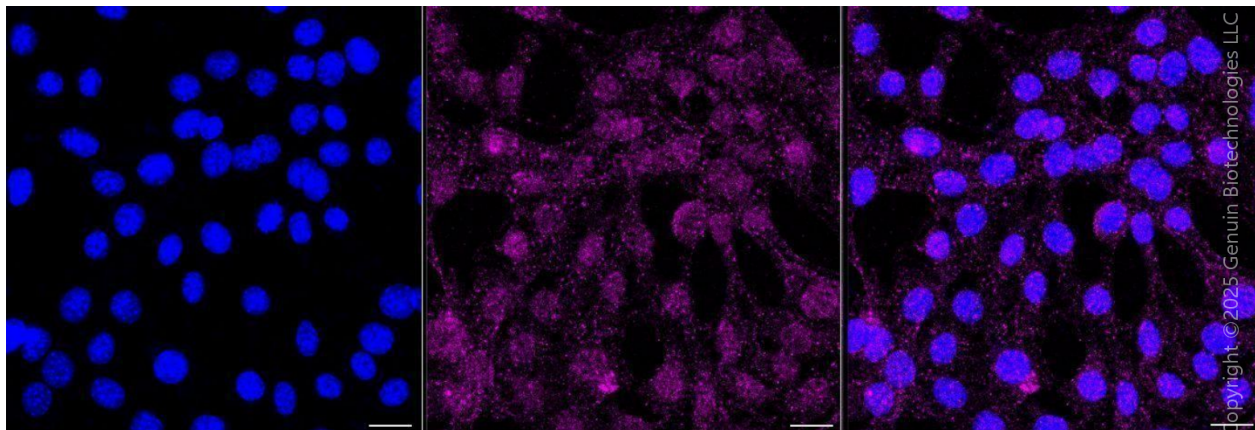
[WWW.GENUINBIOTECH.COM](http://WWW.GENUINBIOTECH.COM)

# Anti-Phospho-BTK (Y223) Recombinant Rabbit Monoclonal Antibody

PAGE 2

**Note:** This product is for research use only.

## Validation Data



Immunocytochemical staining of C2C12 cells with anti-Phospho-BTK (Y223) antibody (Cat#1894, 1:1,000). Nuclei were stained blue with DAPI; Phospho-BTK (Y223) was stained magenta with Alexa Fluor® 647. Images were taken using Leica stellaris 5. Protein abundance based on laser Intensity and smart gain: Medium. Scale bar, 20  $\mu$ m.

---

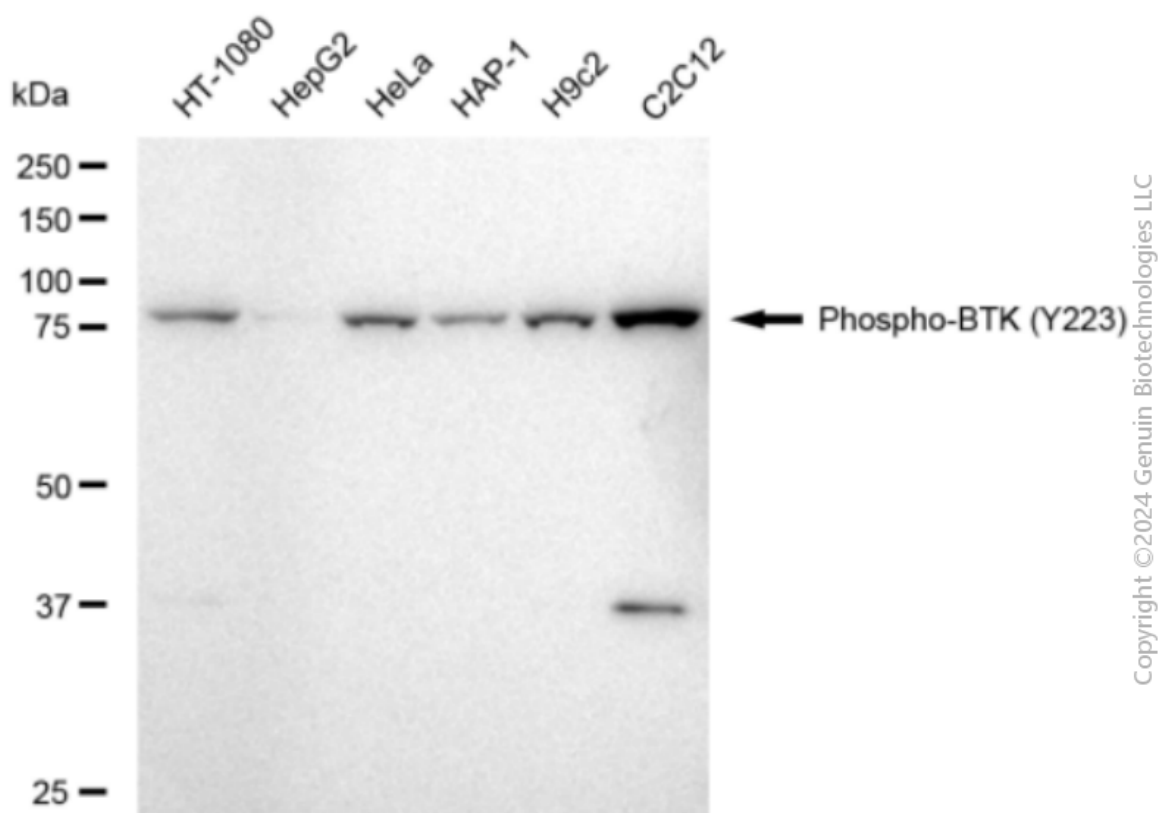
### SUPPORT

SUPPORT@GENUINBIOTECH.COM  
TEL: +1-540-855-7041

### ORDERS

SALES@GENUINBIOTECH.COM  
FAX: +1-540-855-7041

[WWW.GENUINBIOTECH.COM](http://WWW.GENUINBIOTECH.COM)



Western blotting analysis using anti-Phospho-BTK (Y223) antibody (Cat#1894). Total cell lysates (30 µg) from various cell lines were loaded and separated by SDS-PAGE. The blot was incubated with anti-Phospho-BTK (Y223) antibody (Cat#1894, 1:5,000) and HRP-conjugated goat anti-rabbit secondary antibody (Cat#201, 1:20,000) respectively. Image was developed using FeQ™ ECL Substrate Kit (Cat#226).