

Anti-ATP5A1 Recombinant Rabbit Monoclonal Antibody



Catalog #: 1896

Aliases

ATP5F1A; ATP Synthase F1 Subunit Alpha; ATP5A; ATP5AL2; ATP5A1; HATP1; ATPM; OMR; ORM; ATP Synthase, H⁺ Transporting, Mitochondrial F1 Complex, Alpha Subunit 1, Cardiac Muscle; ATP Synthase Subunit Alpha, Mitochondrial; ATP Synthase, H⁺ Transporting, Mitochondrial F1 Complex, Alpha Subunit, Isoform 2, Non-Cardiac Muscle-Like 2; ATP Synthase, H⁺ Transporting, Mitochondrial F1 Complex, Alpha Subunit, Isoform 1, Cardiac Muscle; Epididymis Secretory Sperm Binding Protein Li 123m; Mitochondrial ATP Synthetase, Oligomycin-Resistant; ATP Synthase Alpha Chain, Mitochondrial; ATP Sythase (F1-ATPase) Alpha Subunit; EC 3.6.3.14; HEL-S-123m; EC 3.6.3; COXPD22; MC5DN4A; MC5DN4B; MC5DN4; MOM2

Background

Gene Name: ATP5F1A

NCBI Gene Entry: [498](#)

UniProt Entry: [P25705](#)

Application Information

Molecular Weight: Predicted, 60 kDa; observed, 54 kDa

Clonality: Rabbit monoclonal antibody

Clone ID: 23GB4850

Species Reactivity: Human, mouse, rat

Applications Tested: Western blotting (WB), immunocytochemistry (IC), flow cytometry (FCM)

Immunogen

A synthesized peptide derived from human ATP5A1

Isotype

Rabbit IgG

Storage Buffer

Supplied in PBS (pH 7.4) containing 50% glycerol, and 0.02% sodium azide.

Storage

Store at -20 °C for one year.

Recommended Dilutions

SUPPORT

SUPPORT@GENUINBIOTECH.COM
TEL: +1-540-855-7041

ORDERS

SALES@GENUINBIOTECH.COM
FAX: +1-540-855-7041

WWW.GENUINBIOTECH.COM

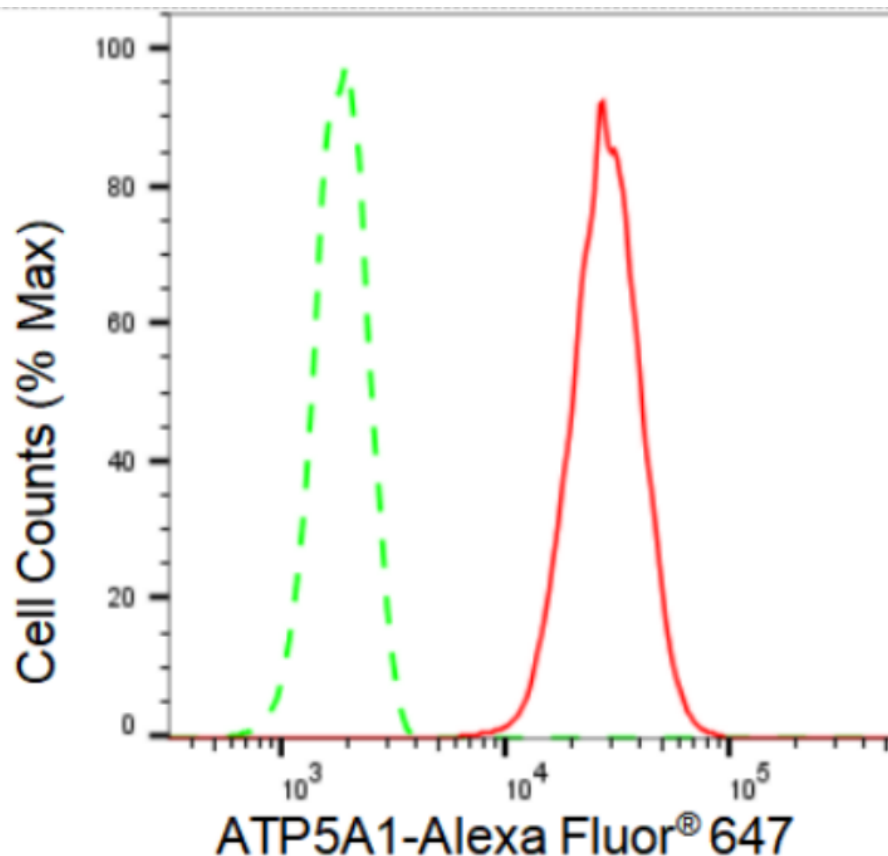
Anti-ATP5A1 Recombinant Rabbit Monoclonal Antibody

PAGE 2

Western Blotting (WB): 1:1,000-1:5,000
Immunocytochemistry (IC): 1:100-1:1,000
Flow Cytometry (FCM): 1:2,000

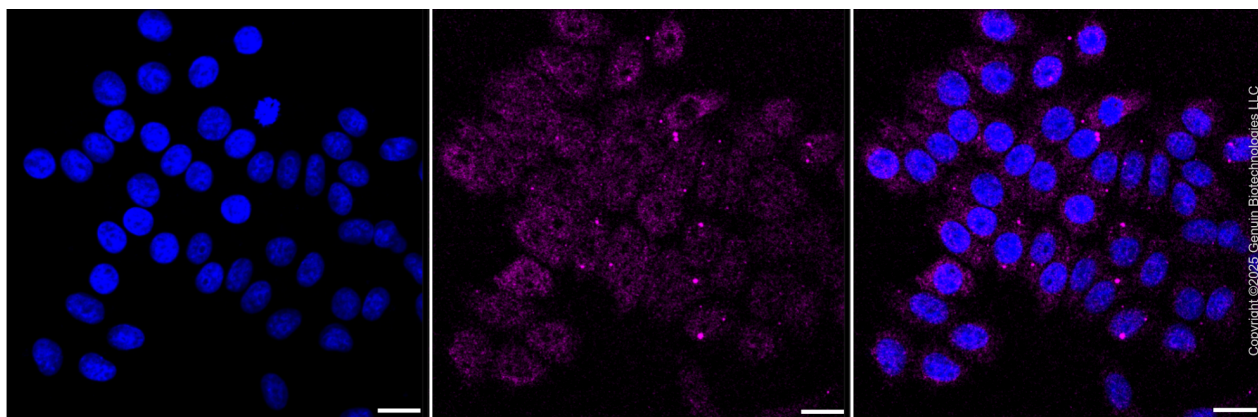
Note: This product is for research use only.

Validation Data



Copyright ©2024 Genuin Biotechnologies LLC

Flow cytometric analysis of ATP5A1 expression in HepG2 cells using ATP5A1 antibody (Cat#1896, 1:2,000). Green, isotype control; red, ATP5A1.



Copyright ©2025 Genuin Biotechnologies LLC

SUPPORT

SUPPORT@GENUINBIOTECH.COM
TEL: +1-540-855-7041

ORDERS

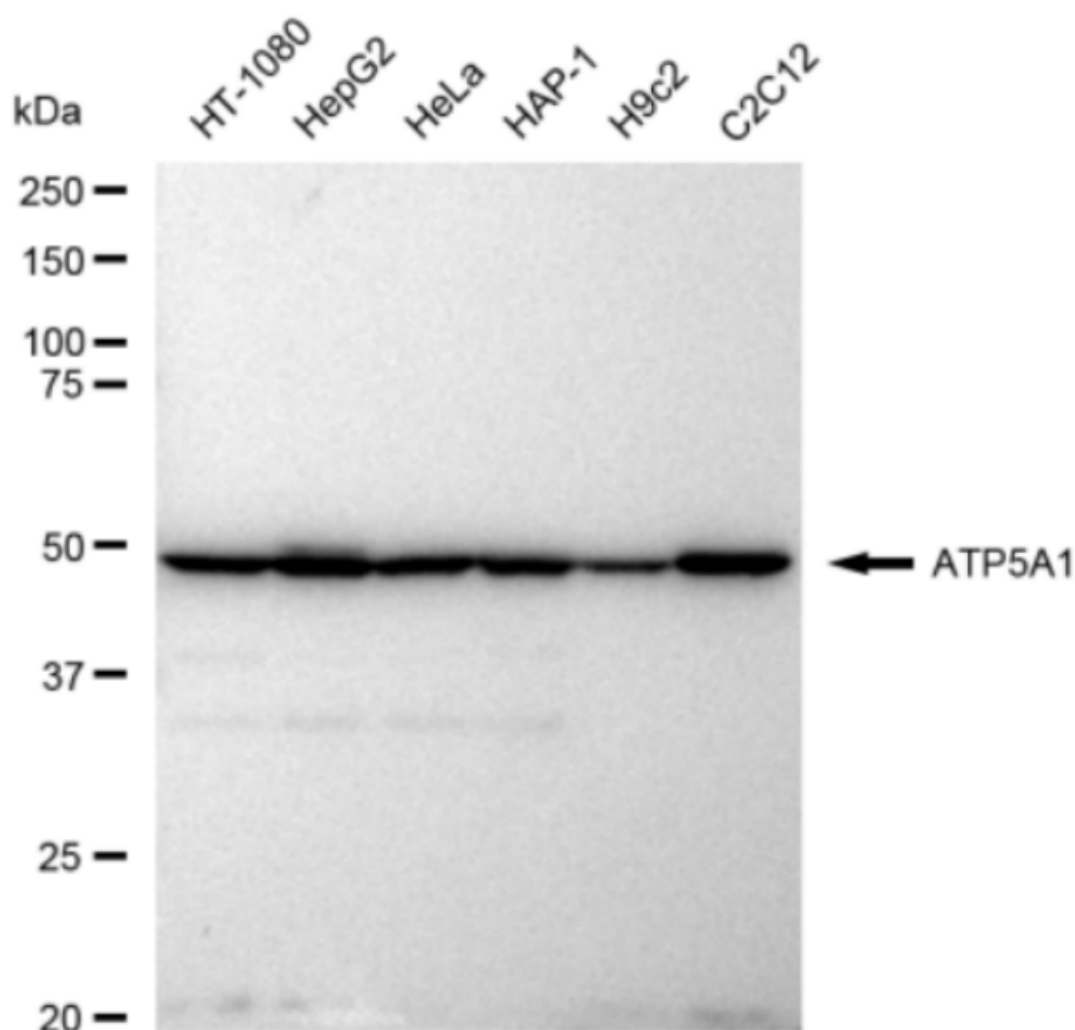
SALES@GENUINBIOTECH.COM
FAX: +1-540-855-7041

WWW.GENUINBIOTECH.COM

Anti-ATP5A1 Recombinant Rabbit Monoclonal Antibody

PAGE 3

Immunocytochemical staining of HepG2 cells with anti-ATP5A1 antibody (Cat #1896, 1:1,000). Nuclei were stained blue with DAPI; ATP5A1 was stained magenta with Alexa Fluor® 647. Images were taken using Leica stellaris 5. Protein abundance based on laser Intensity and smart gain: Medium. Scale bar, 20 μ m.



Copyright ©2024 Genuin Biotechnologies LLC

Western blotting analysis using anti-ATP5A1 antibody (Cat#1896). Total cell lysates (30 μ g) from various cell lines were loaded and separated by SDS-PAGE. The blot was incubated with anti-ATP5A1 antibody (Cat#1896, 1:5,000) and HRP-conjugated goat anti-rabbit secondary antibody (Cat#201, 1:20,000) respectively. Image was developed using FeQ™ ECL Substrate Kit (Cat#226).

SUPPORT

SUPPORT@GENUINBIOTECH.COM
TEL: +1-540-855-7041

ORDERS

SALES@GENUINBIOTECH.COM
FAX: +1-540-855-7041

WWW.GENUINBIOTECH.COM