

Catalog #: 1902

Aliases

CDC5L; Cell Division Cycle 5 Like; PCDC5RP; CEF1; CDC5; Cell Division Cycle 5-Like Protein; Pombe Cdc5-Related Protein; HCDC5; CDC5 (Cell Division Cycle 5, S. Pombe, Homolog)-Like; CDC5 Cell Division Cycle 5-Like (S. Pombe); CDC5 Cell Division Cycle 5-Like; DJ319D22.1 (CDC5-Like Protein); Cell Division Cycle 5-Like; Cdc5-Related Protein; Cdc5-Like Protein; DJ319D22.1; CDC5-LIKE; KIAA0432

Background

Gene Name: CDC5L

NCBI Gene Entry: [988](#)

UniProt Entry: [Q99459](#)

Application Information

Molecular Weight: Predicted, 92 kDa; observed, 100 kDa

Clonality: Rabbit monoclonal antibody

Clone ID: 23GB5040

Species Reactivity: Human, mouse, rat

Applications Tested: Western blotting (WB), flow cytometry (FCM), immunocytochemistry (IC)

Immunogen

A synthesized peptide derived from human CDC5

Isotype

Rabbit IgG

Storage Buffer

Supplied in PBS (pH 7.4) containing 50% glycerol, and 0.02% sodium azide.

Storage

Store at -20 °C for one year.

Recommended Dilutions

Western Blotting (WB): 1:1,000-1:5,000

Flow Cytometry (FCM): 1:2,000

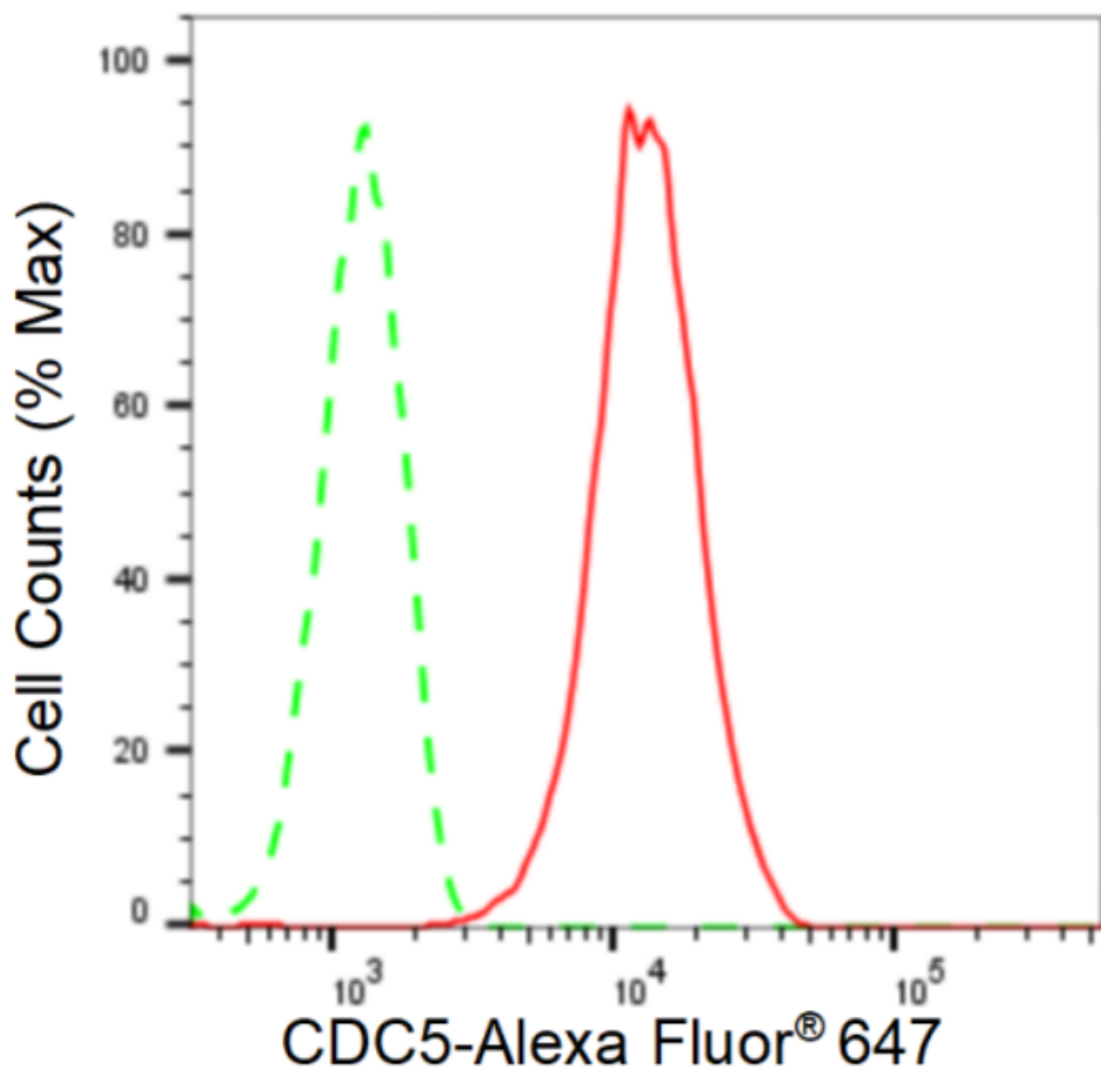
Immunocytochemistry (IC): 1:100-1:1,000

Anti-CDC5 Recombinant Rabbit Monoclonal Antibody

PAGE 2

Note: This product is for research use only.

Validation Data



Copyright ©2024 Genuin Biotechnologies LLC

Flow cytometric analysis of CDC5 expression in HepG2 cells using anti-CDC5 antibody (Cat#1902, 1:2,000). Green, isotype control; red, CDC5.

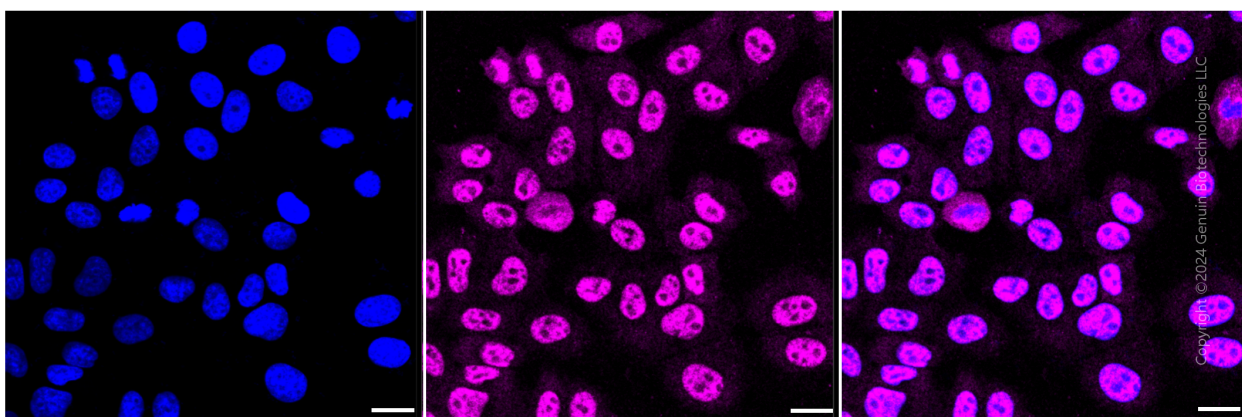
SUPPORT

SUPPORT@GENUINBIOTECH.COM
TEL: +1-540-855-7041

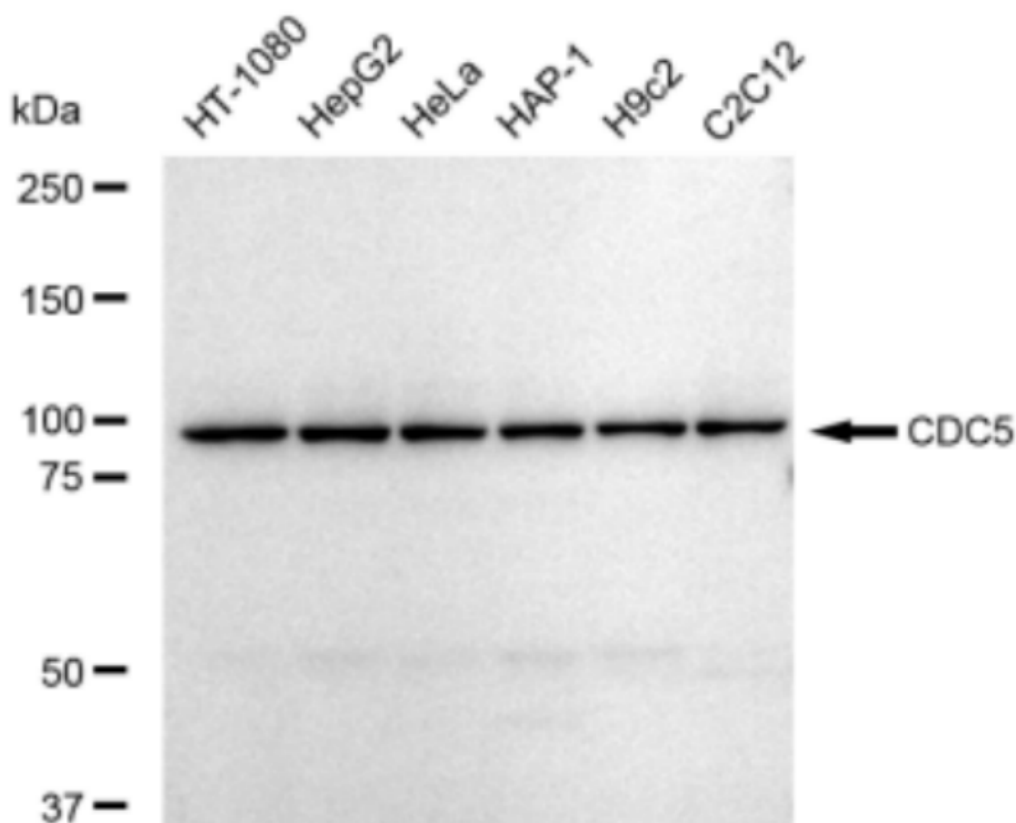
ORDERS

SALES@GENUINBIOTECH.COM
FAX: +1-540-855-7041

WWW.GENUINBIOTECH.COM



Immunocytochemical staining of HepG2 cells with anti-CDC5 antibody (Cat#1902, 1:1,000). Nuclei were stained blue with DAPI; CDC5 was stained magenta with Alexa Fluor® 647. Images were taken using Leica stellaris 5. Protein abundance based on laser Intensity and smart gain: Medium. Scale bar: 20 μ m.



Western blotting analysis using anti-CDC5 antibody (Cat#1902). Total cell lysates (30 μ g) from various cell lines were loaded and separated by SDS-PAGE. The blot was incubated with anti-

SUPPORT

SUPPORT@GENUINBIOTECH.COM
TEL: +1-540-855-7041

ORDERS

SALES@GENUINBIOTECH.COM
FAX: +1-540-855-7041

WWW.GENUINBIOTECH.COM

Anti-CDC5 Recombinant Rabbit Monoclonal Antibody

PAGE 4

CDC5 antibody (Cat#1902, 1:5,000) and HRP-conjugated goat anti-rabbit secondary antibody (Cat#201, 1:20,000) respectively. Image was developed using FeQ™ ECL Substrate Kit (Cat#226).

SUPPORT

SUPPORT@GENUINBIOTECH.COM
TEL: +1-540-855-7041

ORDERS

SALES@GENUINBIOTECH.COM
FAX: +1-540-855-7041

WWW.GENUINBIOTECH.COM