

Anti-Cell division cycle associated 3 Recombinant Rabbit Monoclonal Antibody



Catalog #: 1903

Aliases

CDCA3; Cell Division Cycle Associated 3; TOME-1; GRCC8; Cell Division Cycle-Associated Protein 3; Trigger Of Mitotic Entry Protein 1; Gene-Rich Cluster Protein C8; TOME1; Trigger Of Mitotic Entry 1; C8

Background

Gene Name: CDCA3

NCBI Gene Entry: [83461](#)

UniProt Entry: [Q99618](#)

Application Information

Molecular Weight: Predicted, 29 kDa; observed, 28 kDa

Clonality: Rabbit monoclonal antibody

Clone ID: 23GB5045

Species Reactivity: Human, mouse

Applications Tested: Western blotting (WB), immunocytochemistry (IC), flow cytometry (FCM)

Immunogen

A synthesized peptide derived from human CDCA3

Isotype

Rabbit IgG

Storage Buffer

Supplied in PBS (pH 7.4) containing 50% glycerol, and 0.02% sodium azide.

Storage

Store at -20 °C for one year.

Recommended Dilutions

Western Blotting (WB): 1:1,000-1:5,000

Immunohistochemistry (IHC): 1:100-1:1,000

Flow Cytometry (FCM) : 1:2,000

Note: This product is for research use only.

SUPPORT

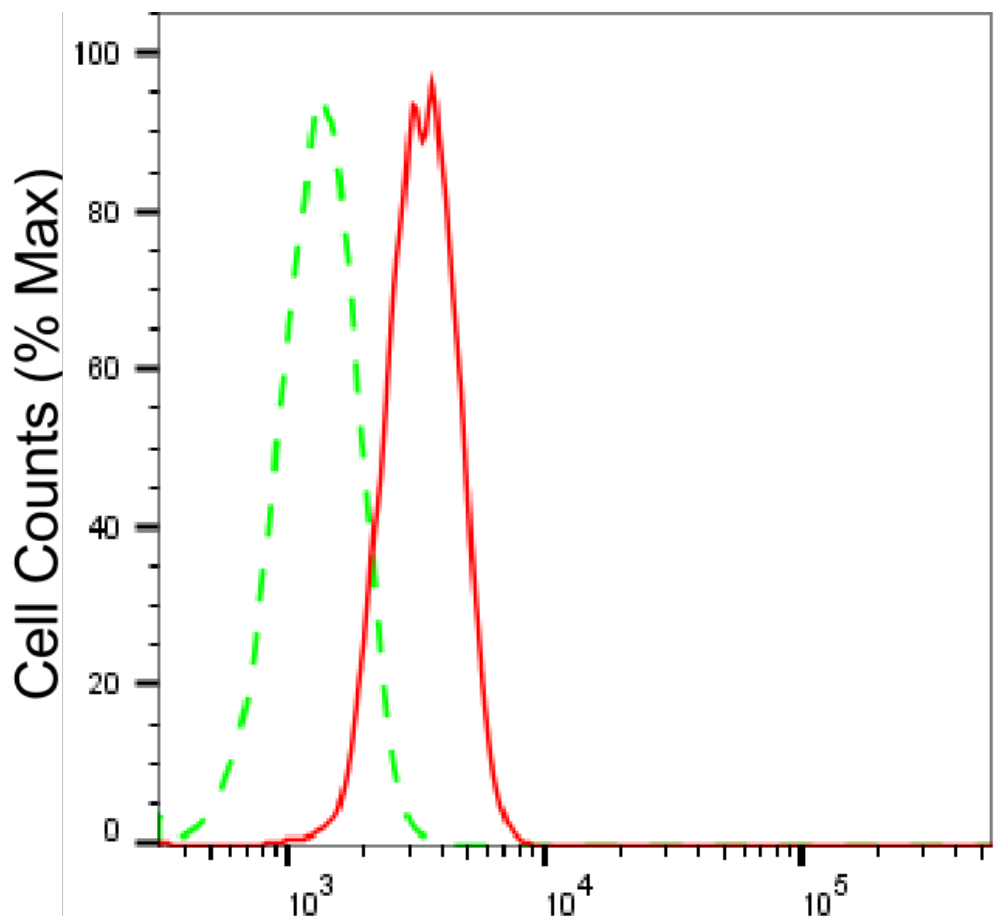
SUPPORT@GENUINBIOTECH.COM
TEL: +1-540-855-7041

ORDERS

SALES@GENUINBIOTECH.COM
FAX: +1-540-855-7041

WWW.GENUINBIOTECH.COM

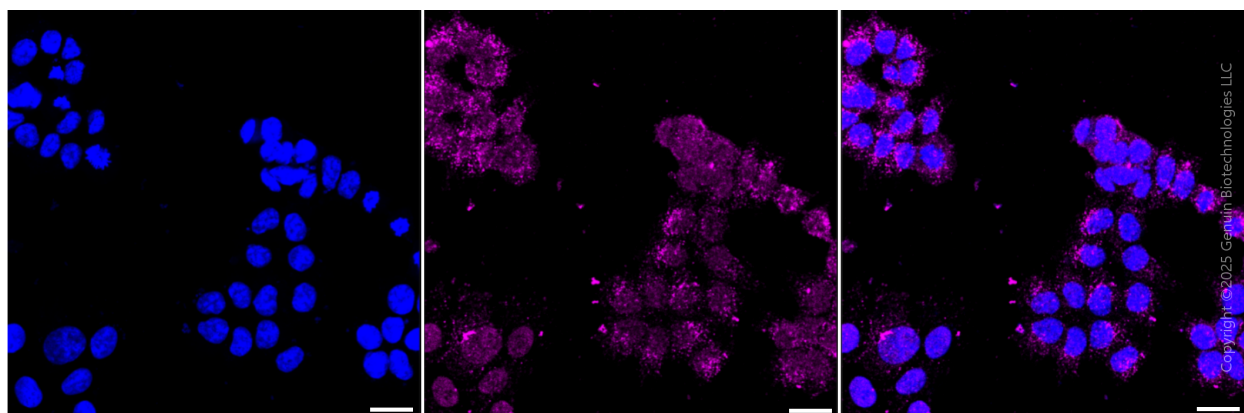
Validation Data



Copyright ©2025 Genuin Biotechnologies LLC

Cell division cycle associated 3-Alexa Fluor® 647

Flow cytometric analysis of Cell division cycle associated 3 expression in HAP-1 cells using anti-Cell division cycle associated 3 antibody (Cat#1903, 1:2,000). Green, isotype control; red, Cell division cycle associated 3.



Copyright ©2025 Genuin Biotechnologies LLC

Immunocytochemical staining of HAP-1 cells with anti-Cell division cycle associated 3 antibody (Cat #1903, 1:1,000) . Nuclei were stained blue with DAPI; Cell division cycle associated 3 was

SUPPORT

SUPPORT@GENUINBIOTECH.COM
TEL: +1-540-855-7041

ORDERS

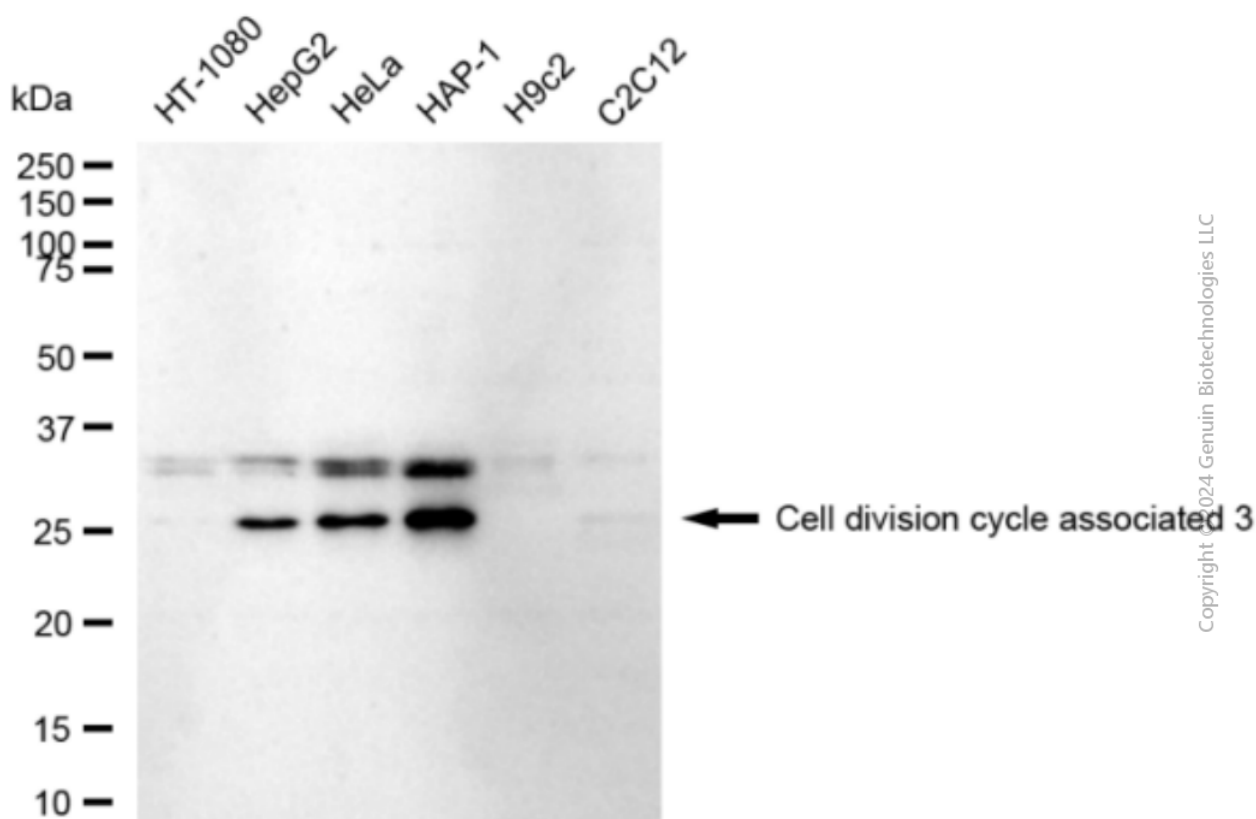
SALES@GENUINBIOTECH.COM
FAX: +1-540-855-7041

WWW.GENUINBIOTECH.COM

Anti-Cell division cycle associated 3 Recombinant Rabbit Monoclonal Antibody

PAGE 3

stained magenta with Alexa Fluor® 647. Images were taken using Leica stellaris 5. Protein abundance based on laser Intensity and smart gain: Medium. Scale bar, 20 µm.



Western blotting analysis using anti-Cell division cycle associated 3 antibody (Cat#1903). Total cell lysates (30 µg) from various cell lines were loaded and separated by SDS-PAGE. The blot was incubated with anti-Cell division cycle associated 3 antibody (Cat#1903, 1:5,000) and HRP-conjugated goat anti-rabbit secondary antibody (Cat#201, 1:20,000) respectively. Image was developed using FeQ™ ECL Substrate Kit (Cat#226).

SUPPORT

SUPPORT@GENUINBIOTECH.COM
TEL: +1-540-855-7041

ORDERS

SALES@GENUINBIOTECH.COM
FAX: +1-540-855-7041

WWW.GENUINBIOTECH.COM