

Anti-R Cadherin Recombinant Rabbit Monoclonal Antibody



Catalog #: 1905

Aliases

CDH4; Cadherin 4; R-CAD; R-Cadherin; Cadherin 4, Type 1, R-Cadherin (Retinal); Retinal Cadherin; Cadherin-4; Cadherin 4, Type 1, Preproprotein; CAD4; RCAD

Background

Gene Name: CDH4

NCBI Gene Entry: [1002](#)

UniProt Entry: [P55283](#)

Application Information

Molecular Weight: Predicted, 100 kDa; observed, 130 kDa

Clonality: Rabbit monoclonal antibody

Clone ID: 23GB5055

Species Reactivity: Human, mouse

Applications Tested: Western blotting (WB), immunocytochemistry (IC), flow cytometry (FCM)

Immunogen

A synthesized peptide derived from human R Cadherin

Isotype

Rabbit IgG

Storage Buffer

Supplied in PBS (pH 7.4) containing 50% glycerol, and 0.02% sodium azide.

Storage

Store at -20 °C for one year.

Recommended Dilutions

Western Blotting (WB): 1:1,000-1:5,000

Immunocytochemistry (IC): 1:100-1:1,000

Flow Cytometry (FCM): 1:2,000

Note: This product is for research use only.

Validation Data

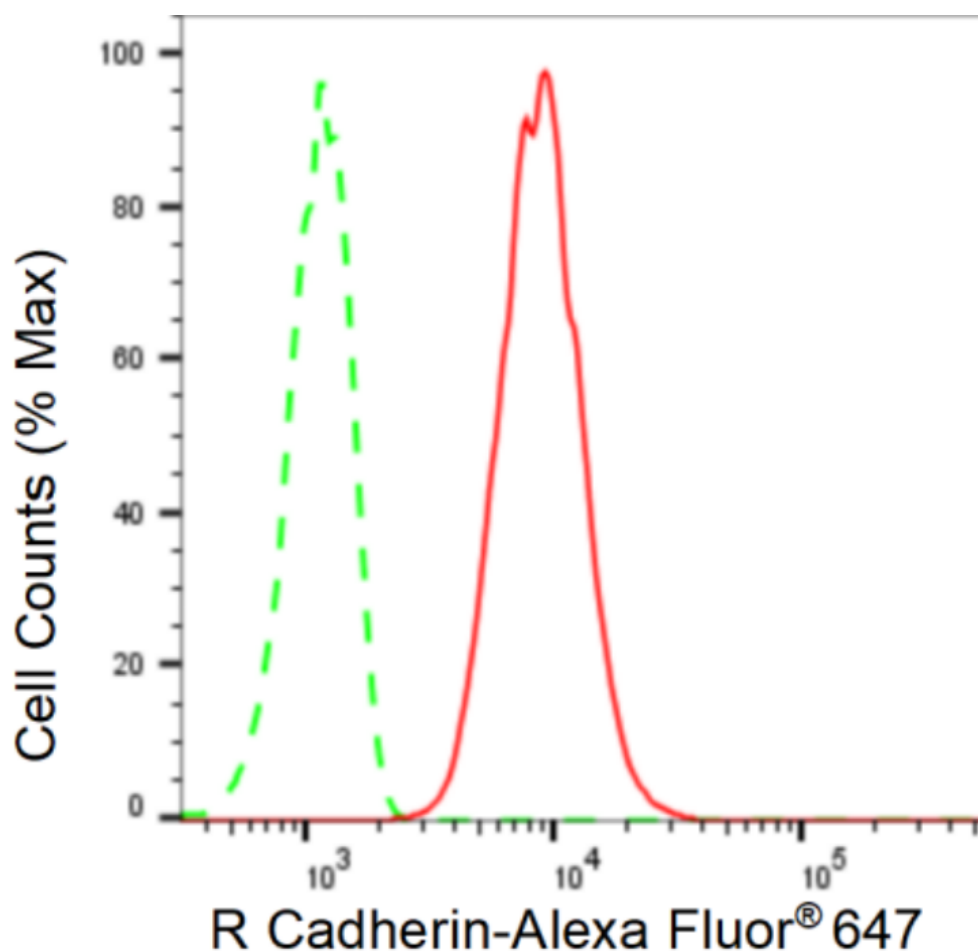
SUPPORT

SUPPORT@GENUINBIOTECH.COM
TEL: +1-540-855-7041

ORDERS

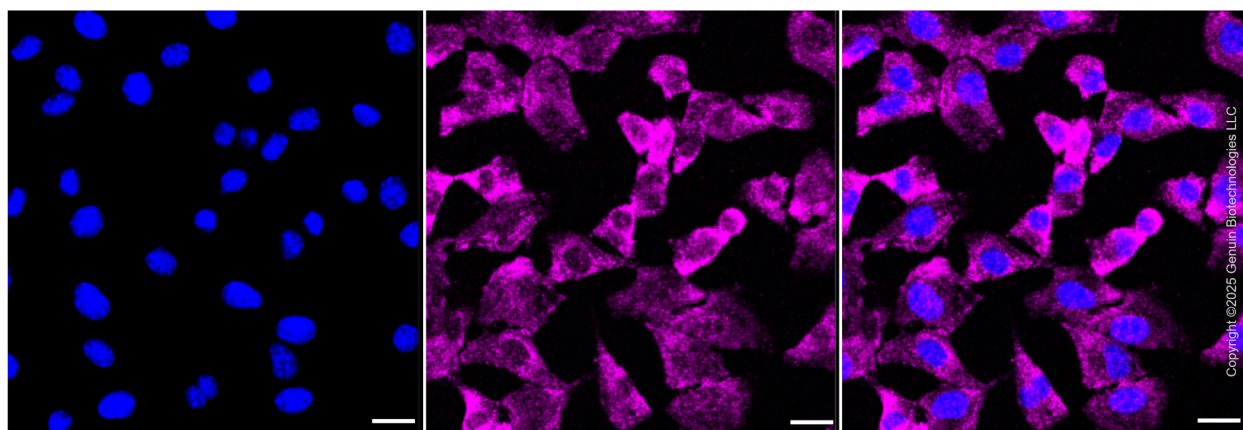
SALES@GENUINBIOTECH.COM
FAX: +1-540-855-7041

WWW.GENUINBIOTECH.COM



Copyright ©2024 Genuin Biotechnologies LLC

Flow cytometric analysis of R Cadherin expression in C2C12 cells using R Cadherin antibody (1905, 1:2,000). Green, isotype control; red, R Cadherin.



Copyright ©2025 Genuin Biotechnologies LLC

Immunocytochemical staining of HepG2 cells with anti-R Cadherin antibody (Cat#1905, 1:1,000) . Nuclei were stained blue with anti-DAPI; R Cadherin was stained magenta with Alexa Fluor[®] 647. Images were taken using Leica stellaris 5. Protein abundance based on laser Intensity and smart gain: Medium. Scale bar, 20 µm.

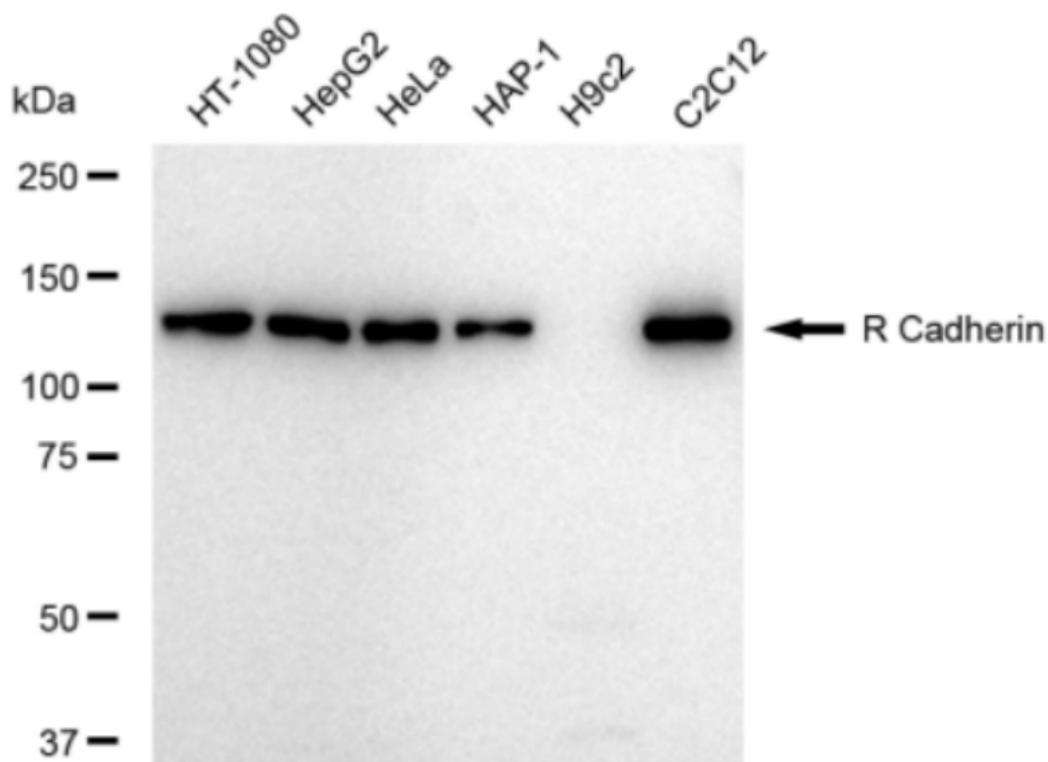
SUPPORT

SUPPORT@GENUINBIOTECH.COM
TEL: +1-540-855-7041

ORDERS

SALES@GENUINBIOTECH.COM
FAX: +1-540-855-7041

WWW.GENUINBIOTECH.COM



Copyright ©2024 Genuin Biotechnologies LLC

Western blotting analysis using anti-R Cadherin antibody (Cat#1905). Total cell lysates (30 µg) from various cell lines were loaded and separated by SDS-PAGE. The blot was incubated with anti-R Cadherin antibody (Cat#1905, 1:5,000) and HRP-conjugated goat anti-rabbit secondary antibody (Cat#201, 1:20,000) respectively. Image was developed using FeQ™ ECL Substrate Kit (Cat#226).