

# Anti-Cadherin 6 Recombinant Rabbit Monoclonal Antibody



**Catalog #: 1906**

## Aliases

CDH6; Cadherin 6; Cadherin 6, Type 2, K-Cadherin (Fetal Kidney); K-Cadherin; Cadherin-6; Kidney Cadherin; CAD6; KCAD

## Background

Gene Name: CDH6

NCBI Gene Entry: [1004](#)

UniProt Entry: [P55285](#)

## Application Information

Molecular Weight: Predicted, 88 kDa; observed, 130 kDa

Clonality: Rabbit monoclonal antibody

Clone ID: 23GB5060

Species Reactivity: Human, mouse

Applications Tested: Western blotting (WB), immunocytochemistry (IC), flow cytometry (FCM)

## Immunogen

A synthesized peptide derived from human K Cadherin

## Isotype

Rabbit IgG

## Storage Buffer

Supplied in PBS (pH 7.4) containing 50% glycerol, and 0.02% sodium azide.

## Storage

Store at -20 °C for one year.

## Recommended Dilutions

Western Blotting (WB): 1:1,000-1:5,000

Immunocytochemistry (IC): 1:100-1:1,000

Flow Cytometry (FCM): 1:2,000

**Note:** This product is for research use only.

## Validation Data

---

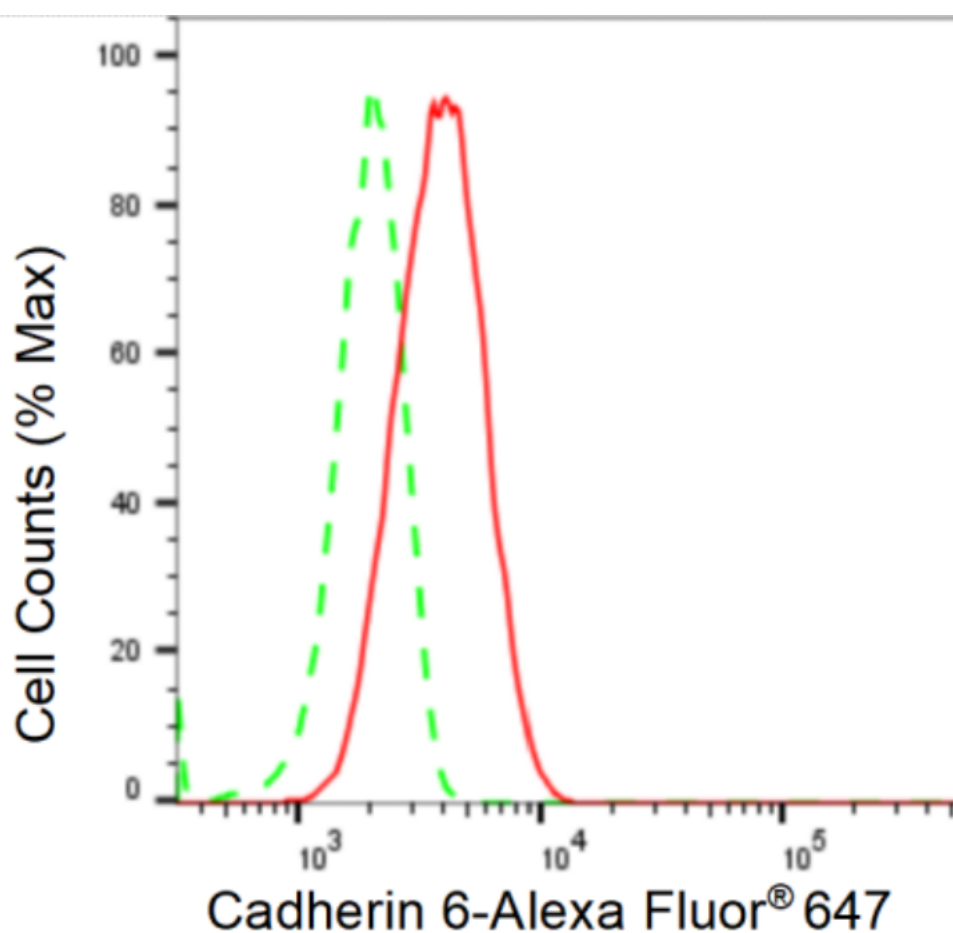
### SUPPORT

SUPPORT@GENUINBIOTECH.COM  
TEL: +1-540-855-7041

### ORDERS

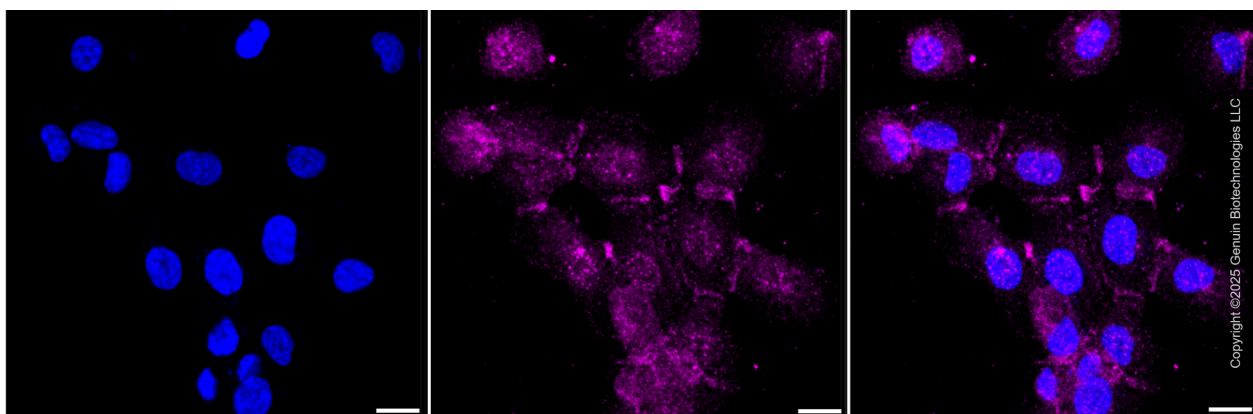
SALES@GENUINBIOTECH.COM  
FAX: +1-540-855-7041

[WWW.GENUINBIOTECH.COM](http://WWW.GENUINBIOTECH.COM)



Copyright ©2024 Genuin Biotechnologies LLC

Flow cytometric analysis of Cadherin 6 expression in HT-1080 cells using Cadherin 6 antibody (Cat#1906, 1:2,000). Green, isotype control; red, Cadherin 6.



Copyright ©2025 Genuin Biotechnologies LLC

Immunocytochemical staining of HT-1080 cells with anti-Cadherin 6 antibody (Cat #1906, 1:1,000) . Nuclei were stained blue with DAPI; Cadherin 6 was stained magenta with Alexa Fluor® 647. Images were taken using Leica stellaris 5. Protein abundance based on laser Intensity and smart gain: Medium. Scale bar, 20  $\mu$ m.

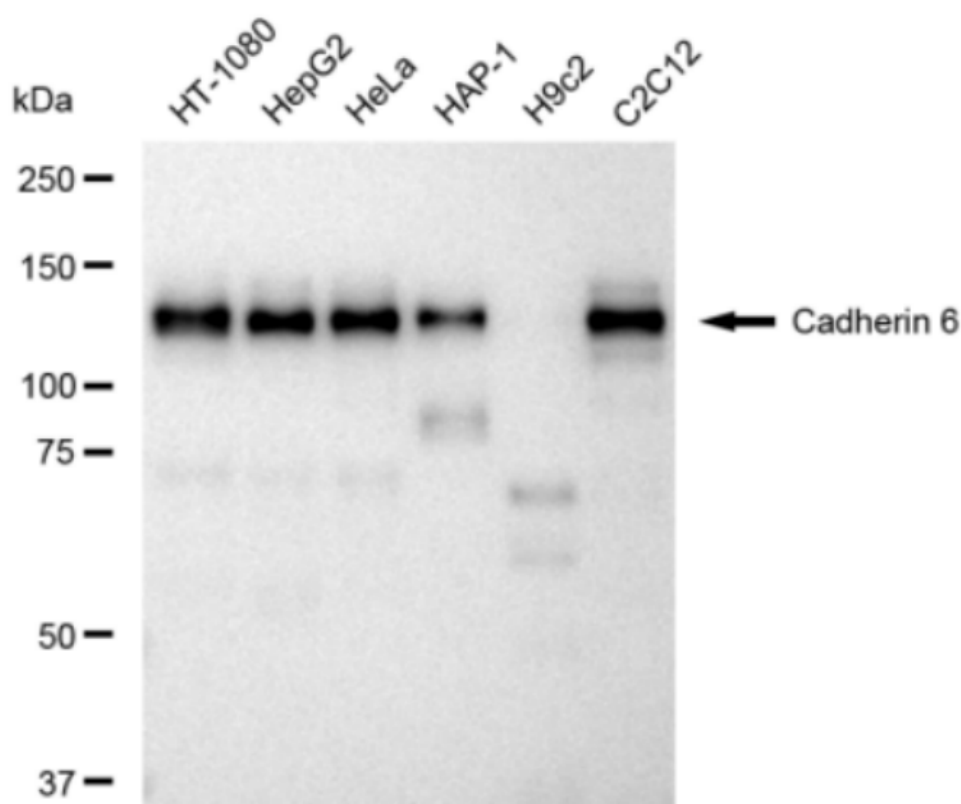
**SUPPORT**

SUPPORT@GENUINBIOTECH.COM  
TEL: +1-540-855-7041

**ORDERS**

SALES@GENUINBIOTECH.COM  
FAX: +1-540-855-7041

**WWW.GENUINBIOTECH.COM**



Copyright ©2024 Genuin Biotechnologies LLC

Western blotting analysis using anti-Cadherin 6 antibody (Cat#1906). Total cell lysates (30 µg) from various cell lines were loaded and separated by SDS-PAGE. The blot was incubated with anti-Cadherin 6 antibody (Cat#1906, 1:5,000) and HRP-conjugated goat anti-rabbit secondary antibody (Cat#201, 1:20,000) respectively. Image was developed using FeQ™ ECL Substrate Kit (Cat#226).