

Anti-VPS24 Recombinant Rabbit Monoclonal Antibody



Catalog #: 1910

Aliases

CHMP3; Charged Multivesicular Body Protein 3; NEDF; Neuroendocrine Differentiation Factor; CGI-149; VPS24; Vacuolar Protein Sorting-Associated Protein 24; Chromatin-Modifying Protein 3; Vacuolar Protein Sorting 24 Homolog (S. Cerevisiae); Vacuolar Protein Sorting 24 (Yeast); Vacuolar Protein Sorting 24 Homolog; CHMP Family, Member 3; 25.1 Protein; CGI149; HVps24

Background

Gene Name: CHMP3

NCBI Gene Entry: [51652](#)

UniProt Entry: [Q9Y3E7](#)

Application Information

Molecular Weight: Predicted, 25 kDa; observed, 29 kDa

Clonality: Rabbit monoclonal antibody

Clone ID: 23GB5080

Species Reactivity: Human, mouse, rat

Applications Tested: Western blotting (WB), immunocytochemistry (IC), flow cytometry (FCM)

Immunogen

A synthesized peptide derived from human VPS24

Isotype

Rabbit IgG

Storage Buffer

Supplied in PBS (pH 7.4) containing 50% glycerol, and 0.02% sodium azide.

Storage

Store at -20 °C for one year.

Recommended Dilutions

Western Blotting (WB): 1:1,000-1:5,000

Immunocytochemistry (IC): 1:100-1:1,000

Flow Cytometry (FCM): 1:2,000

SUPPORT

SUPPORT@GENUINBIOTECH.COM
TEL: +1-540-855-7041

ORDERS

SALES@GENUINBIOTECH.COM
FAX: +1-540-855-7041

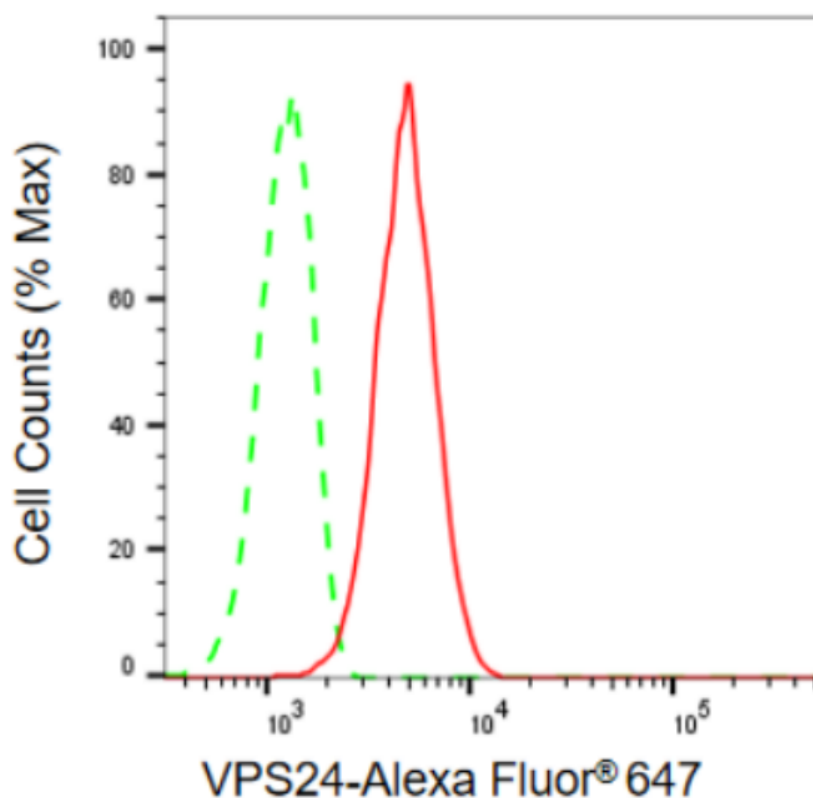
WWW.GENUINBIOTECH.COM

Anti-VPS24 Recombinant Rabbit Monoclonal Antibody

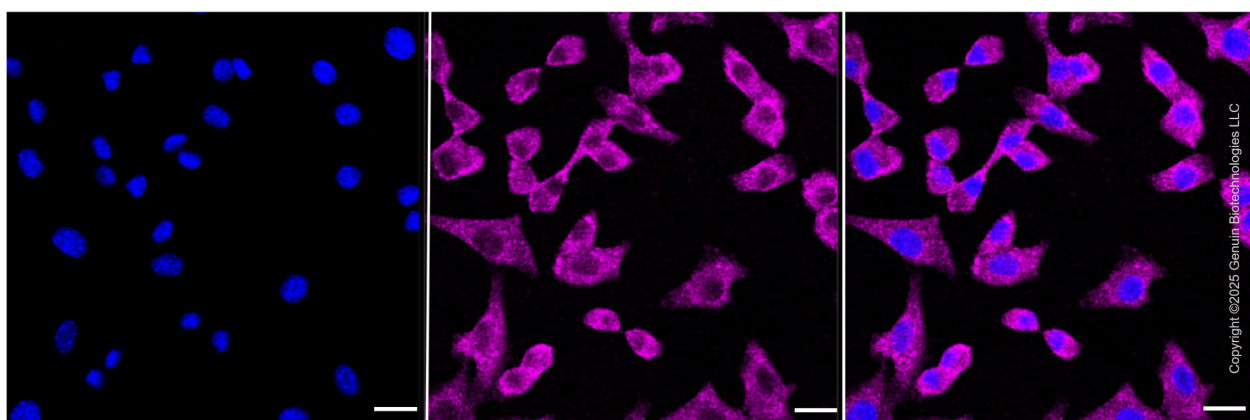
PAGE 2

Note: This product is for research use only.

Validation Data



Flow cytometric analysis of VPS24 expression in C2C12 cells using VPS24 antibody (Cat#1910, 1:2,000). Green, isotype control; red, VPS24.



Immunocytochemical staining of C2C12 cells with anti-VPS24 antibody (Cat #1910, 1:1,000) . Nuclei were stained blue with DAPI; VPS24 was stained magenta with Alexa Fluor® 647. Images were taken using Leica stellaris 5. Protein abundance based on laser Intensity and smart gain: Low. Scale bar, 20 μ m.

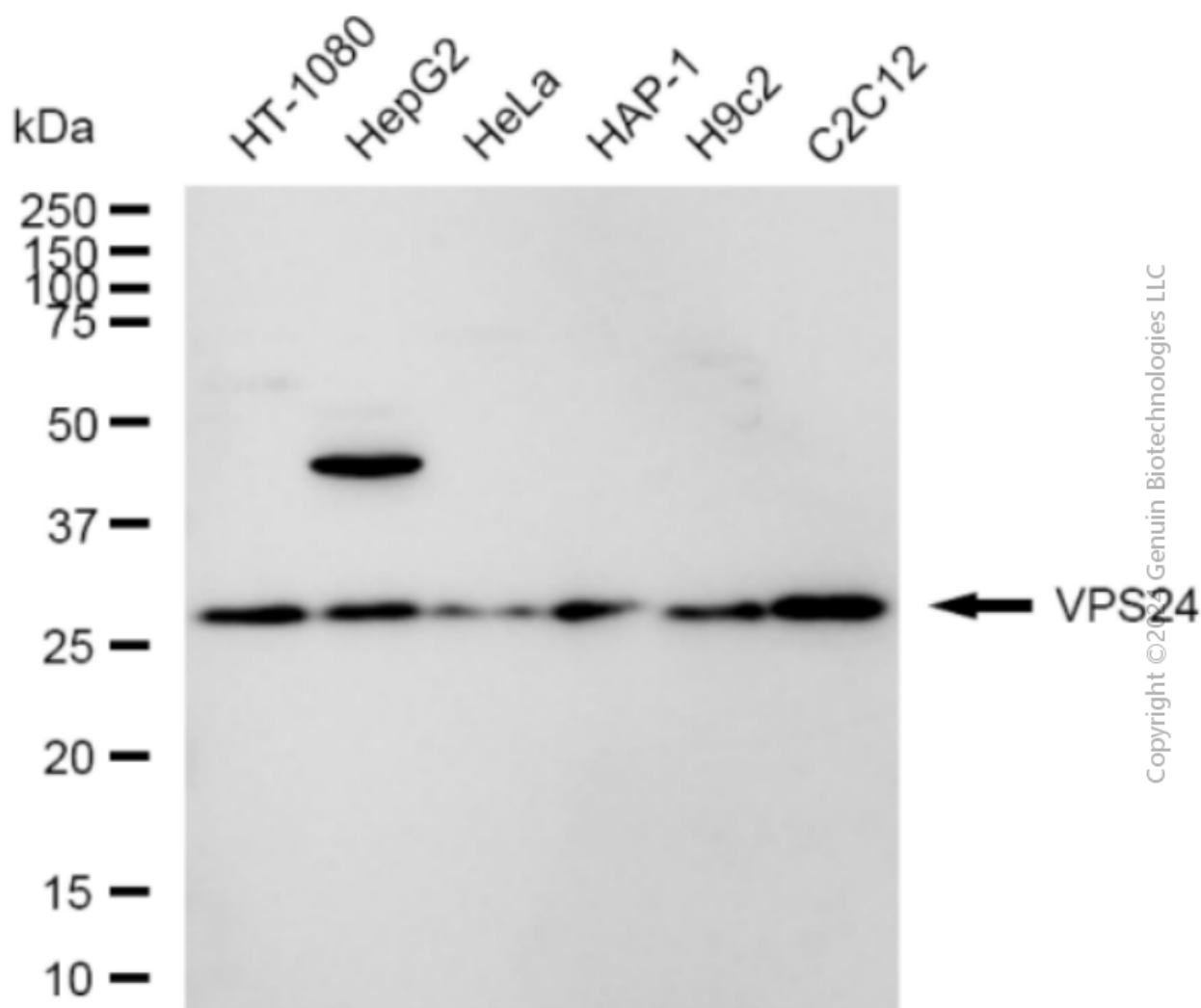
SUPPORT

SUPPORT@GENUINBIOTECH.COM
TEL: +1-540-855-7041

ORDERS

SALES@GENUINBIOTECH.COM
FAX: +1-540-855-7041

WWW.GENUINBIOTECH.COM



Western blotting analysis using anti-VPS24 antibody (Cat#1910). Total cell lysates (30 µg) from various cell lines were loaded and separated by SDS-PAGE. The blot was incubated with anti-VPS24 antibody (Cat#1910, 1:5,000) and HRP-conjugated goat anti-rabbit secondary antibody (Cat#201, 1:20,000) respectively. Image was developed using FeQ™ ECL Substrate Kit (Cat#226).