

Anti-Claudin 11 Recombinant Rabbit Monoclonal Antibody



Catalog #: 1912

Aliases

CLDN11; Claudin 11; OSP; OTM; Oligodendrocyte Transmembrane Protein; Oligodendrocyte-Specific Protein; Claudin-11; HLD22

Background

Gene Name: CLDN11

NCBI Gene Entry: [5010](#)

UniProt Entry: [O75508](#)

Application Information

Molecular Weight: Predicted, 22 kDa; observed, 22 kDa

Clonality: Rabbit monoclonal antibody

Clone ID: 23GB5090

Species Reactivity: Human

Applications Tested: Western blotting (WB)

Immunogen

A synthesized peptide derived from human Oligodendrocyte Specific Protein

Isotype

Rabbit IgG

Storage Buffer

Supplied in PBS (pH 7.4) containing 50% glycerol, and 0.02% sodium azide.

Storage

Store at -20 °C for one year.

Recommended Dilutions

Western Blotting (WB): 1:1,000-1:5,000

Note: This product is for research use only.

Validation Data

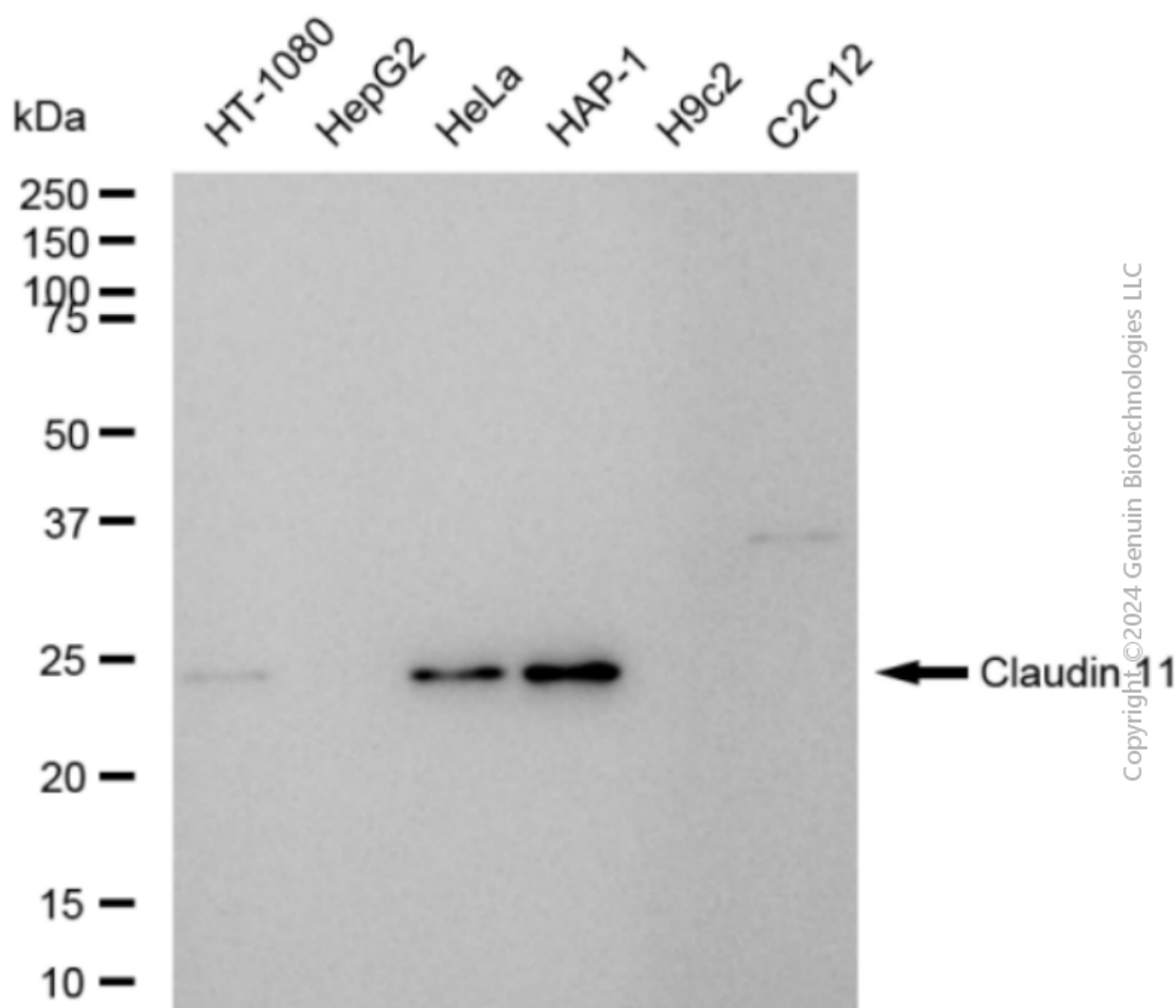
SUPPORT

SUPPORT@GENUINBIOTECH.COM
TEL: +1-540-855-7041

ORDERS

SALES@GENUINBIOTECH.COM
FAX: +1-540-855-7041

WWW.GENUINBIOTECH.COM



Western blotting analysis using anti-Claudin 11 antibody (Cat#1912). Total cell lysates (30 µg) from various cell lines were loaded and separated by SDS-PAGE. The blot was incubated with anti-Claudin 11 antibody (Cat#1912, 1:5,000) and HRP-conjugated goat anti-rabbit secondary antibody (Cat#201, 1:20,000) respectively. Image was developed using FeQ™ ECL Substrate Kit (Cat#226).