

# Anti-Chymase 1 Recombinant Rabbit Monoclonal Antibody



## Catalog #: 1913

### Aliases

CMA1; Chymase 1; Chymase 1, Mast Cell; Mast Cell Protease I; Alpha-Chymase; EC 3.4.21.39; Chymase; CYH; Chymase 1 Preproprotein Transcript E; Chymase 1 Preproprotein Transcript I; Chymase, Mast Cell; Chymase, Heart; EC 3.4.21; MCT1; CYM

### Background

Gene Name: CMA1

NCBI Gene Entry: [1215](#)

UniProt Entry: [P23946](#)

### Application Information

Molecular Weight: Predicted, 27 kDa; observed, 27 kDa

Clonality: Rabbit monoclonal antibody

Clone ID: 23GB5095

Species Reactivity: Mouse

Applications Tested: Western blotting (WB), flow cytometry (FCM), immunocytochemistry (IC)

### Immunogen

A synthesized peptide derived from human Mast Cell Chymase

### Isotype

Rabbit IgG

### Storage Buffer

Supplied in PBS (pH 7.4) containing 50% glycerol, and 0.02% sodium azide.

### Storage

Store at -20 °C for one year.

### Recommended Dilutions

Western Blotting (WB): 1:1,000-1:5,000

Flow Cytometry (FCM) : 1:2,000

Immunocytochemistry (IC): 1:100-1:1,000

**Note:** This product is for research use only.

---

#### SUPPORT

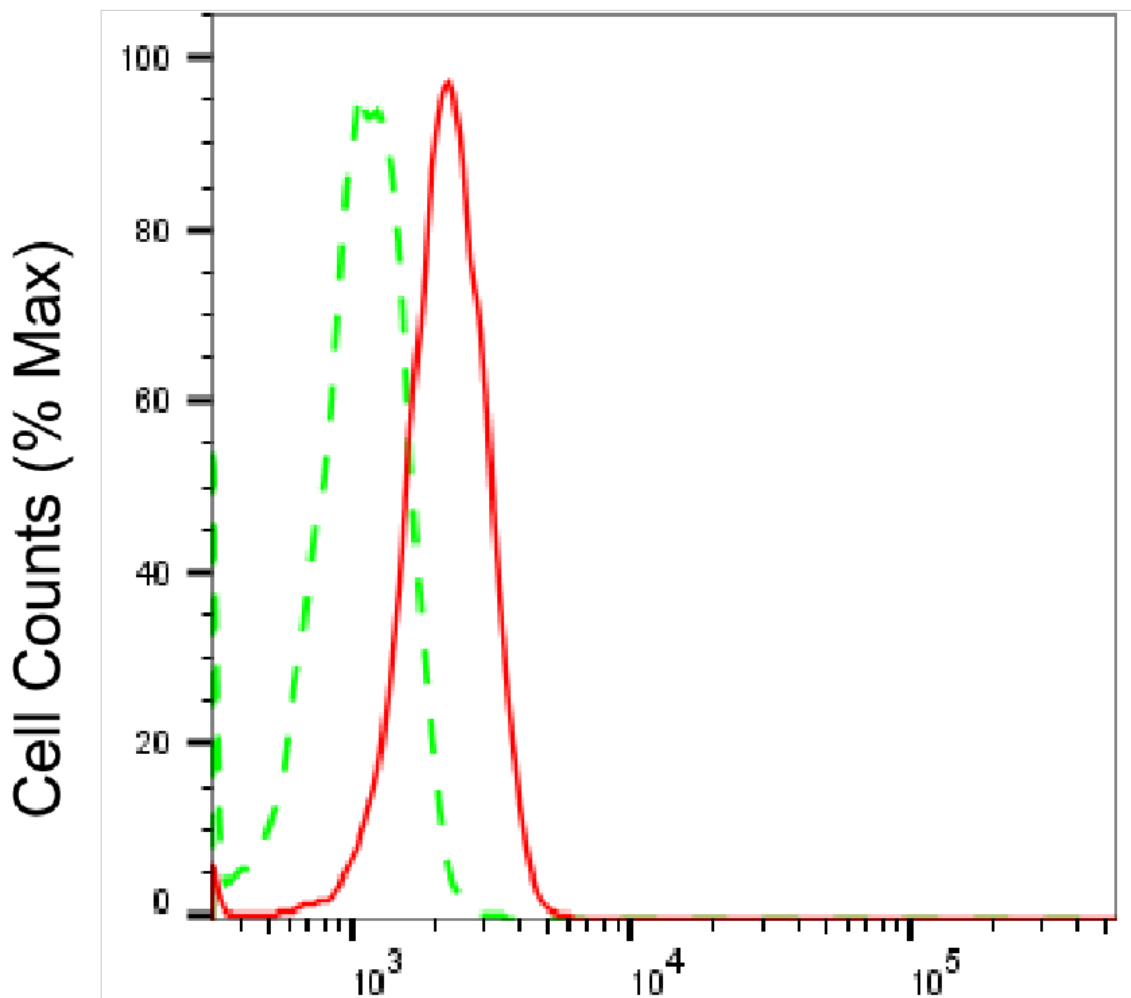
SUPPORT@GENUINBIOTECH.COM  
TEL: +1-540-855-7041

#### ORDERS

SALES@GENUINBIOTECH.COM  
FAX: +1-540-855-7041

[WWW.GENUINBIOTECH.COM](http://WWW.GENUINBIOTECH.COM)

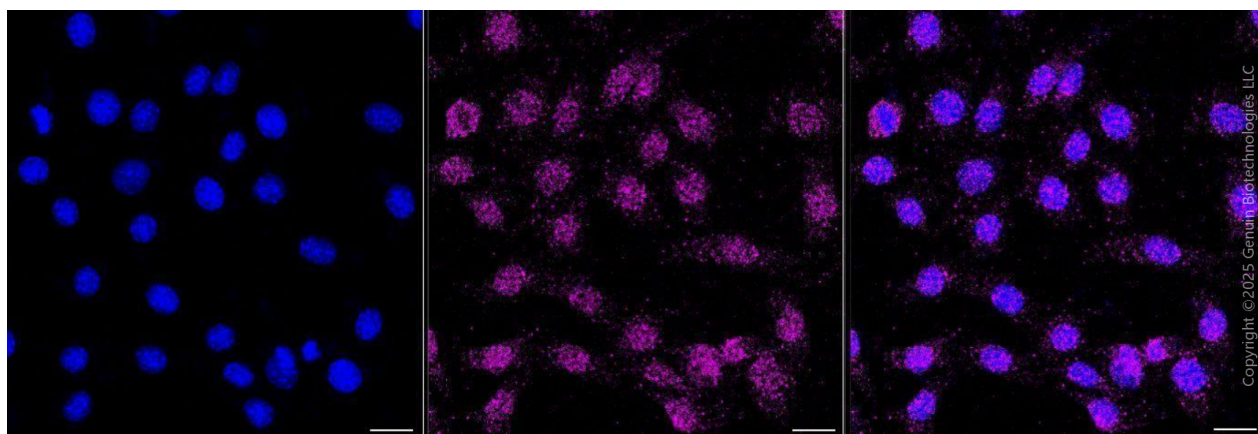
**Validation Data**



Copyright ©2025 Genuin Biotechnologies LLC

**Chymase 1-Alexa Fluor® 647**

Flow cytometric analysis of Chymase 1 expression in C2C12 cells using anti-Chymase 1 antibody (Cat#1913, 1:2,000). Green, isotype control; red, Chymase 1.



Copyright ©2025 Genuin Biotechnologies LLC

**SUPPORT**

SUPPORT@GENUINBIOTECH.COM  
TEL: +1-540-855-7041

**ORDERS**

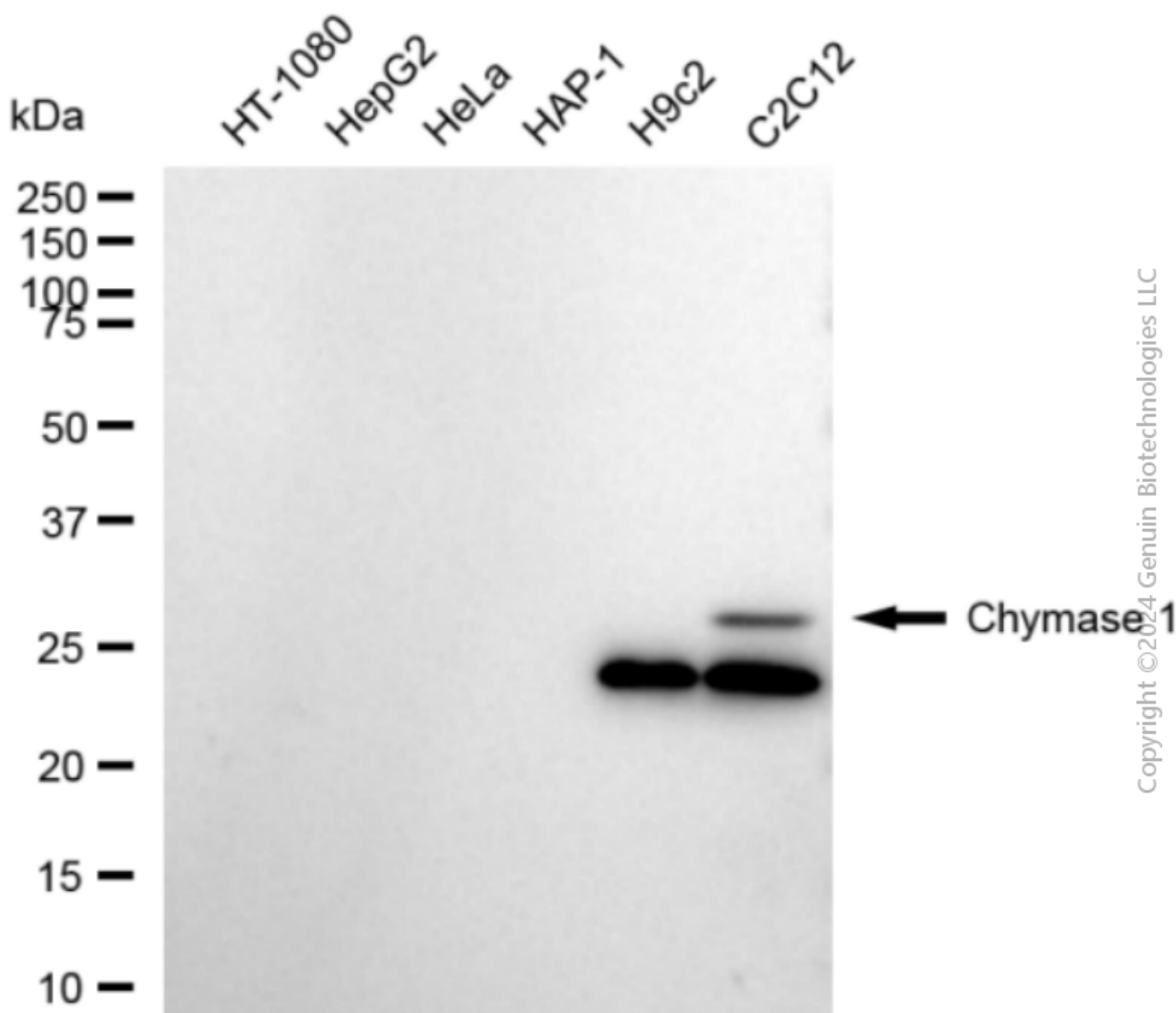
SALES@GENUINBIOTECH.COM  
FAX: +1-540-855-7041

[WWW.GENUINBIOTECH.COM](http://WWW.GENUINBIOTECH.COM)

## Anti-Chymase 1 Recombinant Rabbit Monoclonal Antibody

PAGE 3

Immunocytochemical staining of C2C12 cells with anti-Chymase 1 antibody (Cat#1913, 1:1,000). Nuclei were stained blue with DAPI; Chymase 1 was stained magenta with Alexa Fluor® 647. Images were taken using Leica stellaris 5. Protein abundance based on laser Intensity and smart gain: Low. Scale bar, 20  $\mu$ m.



Western blotting analysis using anti-Chymase 1 antibody (Cat#1913). Total cell lysates (30  $\mu$ g) from various cell lines were loaded and separated by SDS-PAGE. The blot was incubated with anti-Chymase 1 antibody (Cat#1913, 1:5,000) and HRP-conjugated goat anti-rabbit secondary antibody (Cat#201, 1:20,000) respectively. Image was developed using FeQ™ ECL Substrate Kit (Cat#226).

### SUPPORT

SUPPORT@GENUINBIOTECH.COM  
TEL: +1-540-855-7041

### ORDERS

SALES@GENUINBIOTECH.COM  
FAX: +1-540-855-7041

WWW.GENUINBIOTECH.COM