

Anti-Collagen type XI alpha 1 chain Recombinant Rabbit Monoclonal Antibody



Catalog #: 1914

Aliases

COL11A1; Collagen Type XI Alpha 1 Chain; CO11A1; COLL6; STL2; Collagen XI, Alpha-1 Polypeptide; Deafness, Autosomal Dominant 37; Collagen, Type XI, Alpha 1; Collagen Alpha-1(XI) Chain; DFNA37

Background

Gene Name: COL11A1

NCBI Gene Entry: [1301](#)

UniProt Entry: [P12107](#)

Application Information

Molecular Weight: Predicted, 181 kDa; observed, 150 kDa

Clonality: Rabbit monoclonal antibody

Clone ID: 23GB5100

Species Reactivity: Human

Applications Tested: Western blotting (WB), immunocytochemistry (IC), flow cytometry (FCM)

Immunogen

A synthesized peptide derived from human COL11A1

Isotype

Rabbit IgG

Storage Buffer

Supplied in PBS (pH 7.4) containing 50% glycerol, and 0.02% sodium azide.

Storage

Store at -20 °C for one year.

Recommended Dilutions

Western Blotting (WB): 1:1,000-1:5,000

Immunohistochemistry (IHC): 1:100-1:1,000

Flow Cytometry (FCM) : 1:2,000

Note: This product is for research use only.

SUPPORT

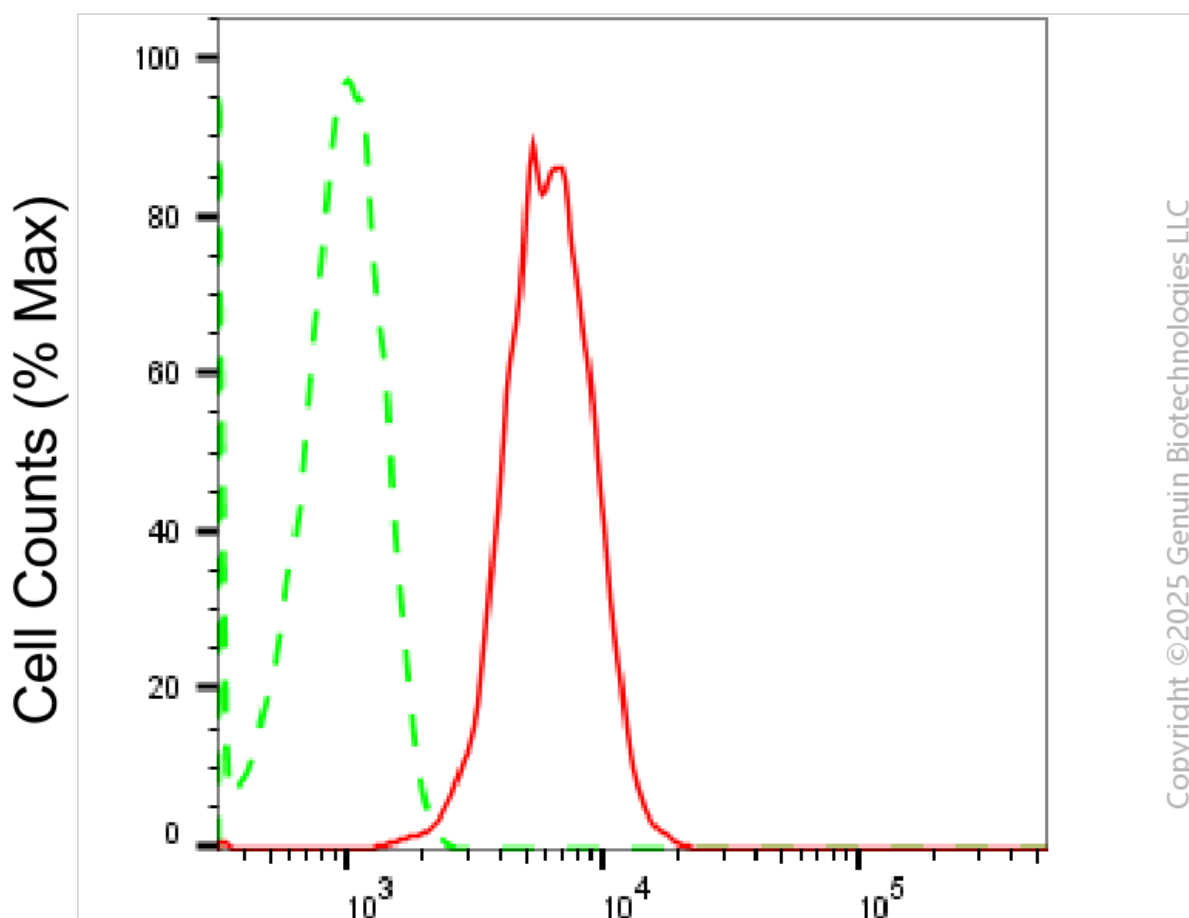
SUPPORT@GENUINBIOTECH.COM
TEL: +1-540-855-7041

ORDERS

SALES@GENUINBIOTECH.COM
FAX: +1-540-855-7041

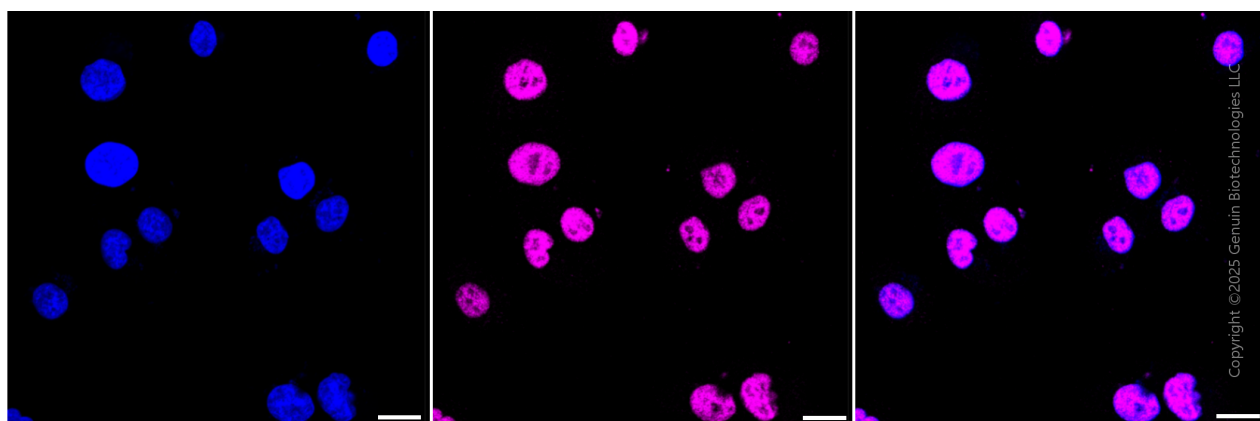
WWW.GENUINBIOTECH.COM

Validation Data



Collagen type XI alpha 1 chain-Alexa Fluor® 647

Flow cytometric analysis of Collagen type XI alpha 1 chain expression in HT-1080 cells using anti-Collagen type XI alpha 1 chain antibody (Cat#1914, 1:2,000). Green, isotype control; red, Collagen type XI alpha 1 chain.



Immunocytochemical staining of HT-1080 cells with anti-Collagen type XI alpha 1 chain antibody

SUPPORT

SUPPORT@GENUINBIOTECH.COM
TEL: +1-540-855-7041

ORDERS

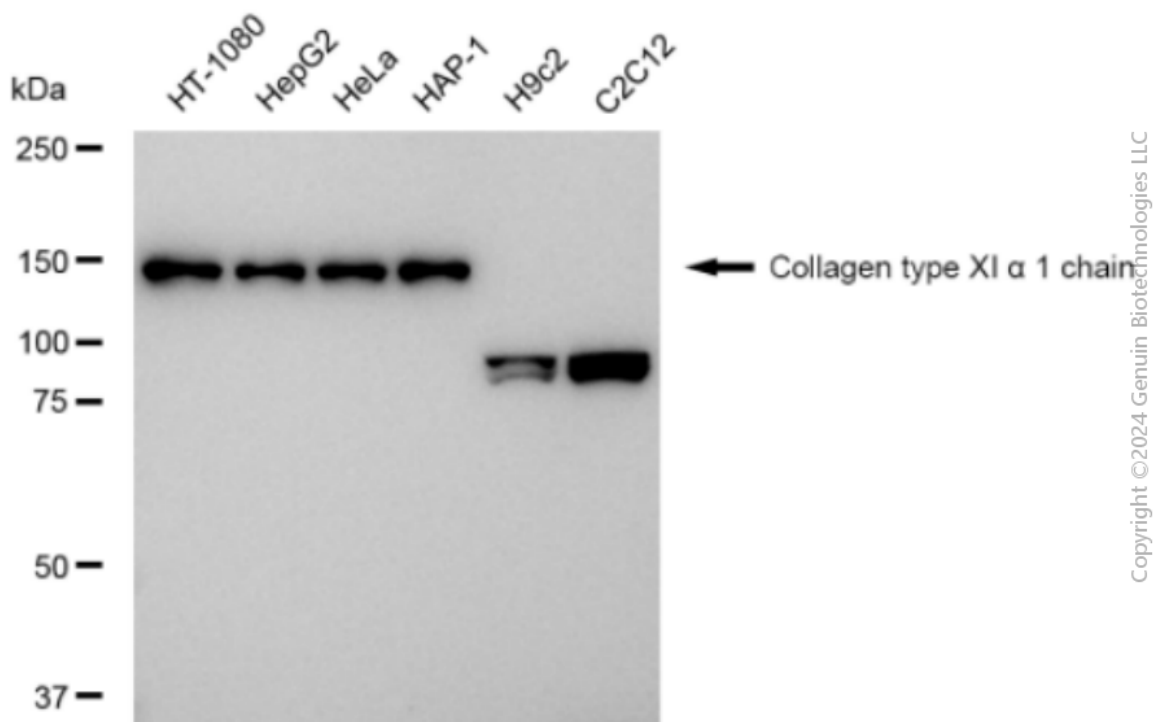
SALES@GENUINBIOTECH.COM
FAX: +1-540-855-7041

WWW.GENUINBIOTECH.COM

Anti-Collagen type XI alpha 1 chain Recombinant Rabbit Monoclonal Antibody

PAGE 3

(Cat #1914, 1:1,000) . Nuclei were stained blue with DAPI; Collagen type XI alpha 1 chain was stained magenta with Alexa Fluor® 647. Images were taken using Leica stellaris 5. Protein abundance based on laser Intensity and smart gain: Medium. Scale bar, 20 μ m.



Western blotting analysis using anti-Collagen type XI alpha 1 chain antibody (Cat#1914). Total cell lysates (30 μ g) from various cell lines were loaded and separated by SDS-PAGE. The blot was incubated with anti-Collagen type XI alpha 1 chain antibody (Cat#1914, 1:5,000) and HRP-conjugated goat anti-rabbit secondary antibody (Cat#201, 1:20,000) respectively. Image was developed using FeQ™ ECL Substrate Kit (Cat#226).

SUPPORT

SUPPORT@GENUINBIOTECH.COM
TEL: +1-540-855-7041

ORDERS

SALES@GENUINBIOTECH.COM
FAX: +1-540-855-7041

WWW.GENUINBIOTECH.COM