

# Anti-C-terminal binding protein 1 Recombinant Rabbit Monoclonal Antibody



**Catalog #: 1917**

## Aliases

CTBP1; C-Terminal Binding Protein 1; BARS; Brefeldin A-Ribosylated Substrate; C-Terminal-Binding Protein 1; EC 1.1.1.158; EC 1.1.1.-; EC 1.1.1; HADDTS; CtBP1; CTBP

## Background

Gene Name: CTBP1

NCBI Gene Entry: [1487](#)

UniProt Entry: [Q13363](#)

## Application Information

Molecular Weight: Predicted, 48 kDa; observed, 47 kDa

Clonality: Rabbit monoclonal antibody

Clone ID: 23GB5115

Species Reactivity: Human, mouse, rat

Applications Tested: Western blotting (WB), immunocytochemistry (IC), flow cytometry (FCM)

## Immunogen

A synthesized peptide derived from human CtBP1

## Isotype

Rabbit IgG

## Storage Buffer

Supplied in PBS (pH 7.4) containing 50% glycerol, and 0.02% sodium azide.

## Storage

Store at -20 °C for one year.

## Recommended Dilutions

Western Blotting (WB): 1:1,000-1:5,000

Immunocytochemistry (IC): 1:100-1:1,000

Flow Cytometry (FCM): 1:2,000

**Note:** This product is for research use only.

## Validation Data

---

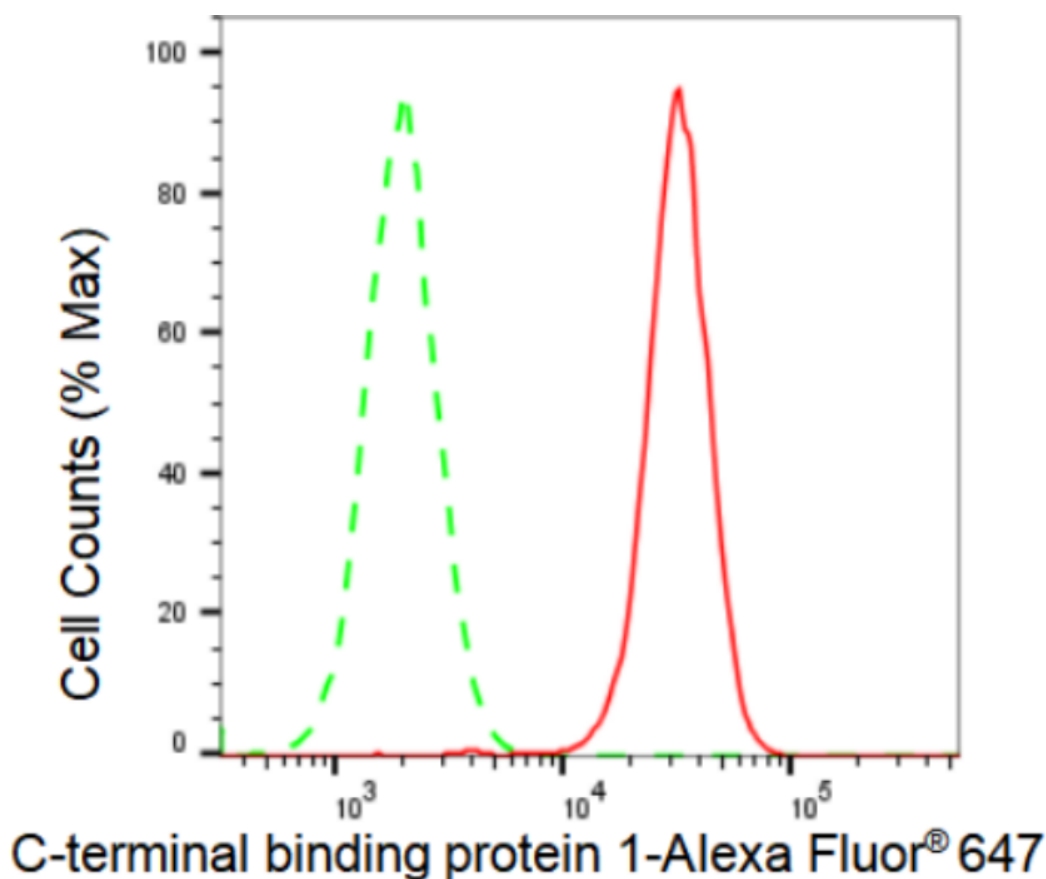
### SUPPORT

SUPPORT@GENUINBIOTECH.COM  
TEL: +1-540-855-7041

### ORDERS

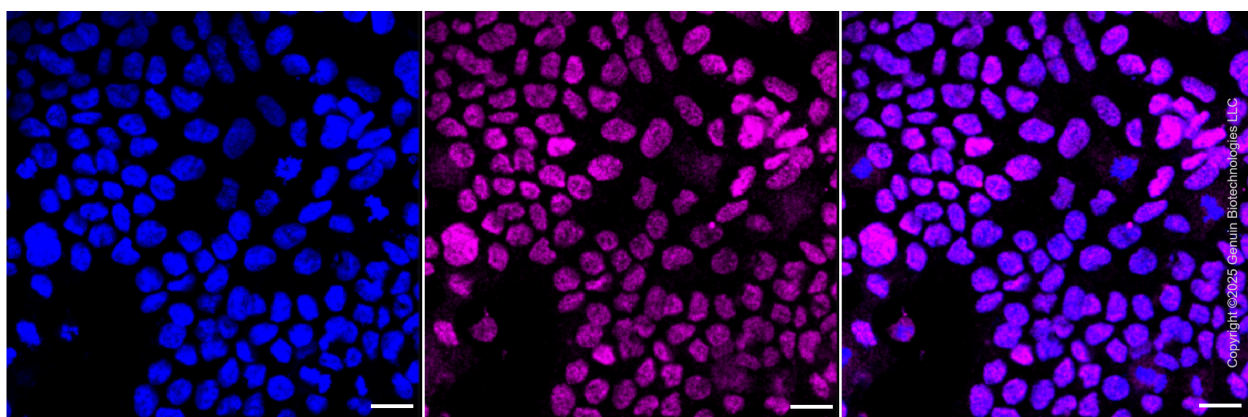
SALES@GENUINBIOTECH.COM  
FAX: +1-540-855-7041

[WWW.GENUINBIOTECH.COM](http://WWW.GENUINBIOTECH.COM)



Copyright ©2024 Genuin Biotechnologies LLC

Flow cytometric analysis of C-terminal binding protein 1 expression in HAP-1 cells using C-terminal binding protein 1 antibody (Cat#1917, 1:2,000). Green, isotype control; red, C-terminal binding protein 1.



Immunocytochemical staining of HAP1 cells with anti-C-terminal binding protein 1 antibody (Cat #1917, 1:1,000) . Nuclei were stained blue with DAPI;C-terminal binding protein 1 was stained magenta with Alexa Fluor® 647. Images were taken using Leica stellaris 5. Protein abundance based on laser Intensity and smart gain: Medium. Scale bar, 20  $\mu$ m.

**SUPPORT**

SUPPORT@GENUINBIOTECH.COM  
TEL: +1-540-855-7041

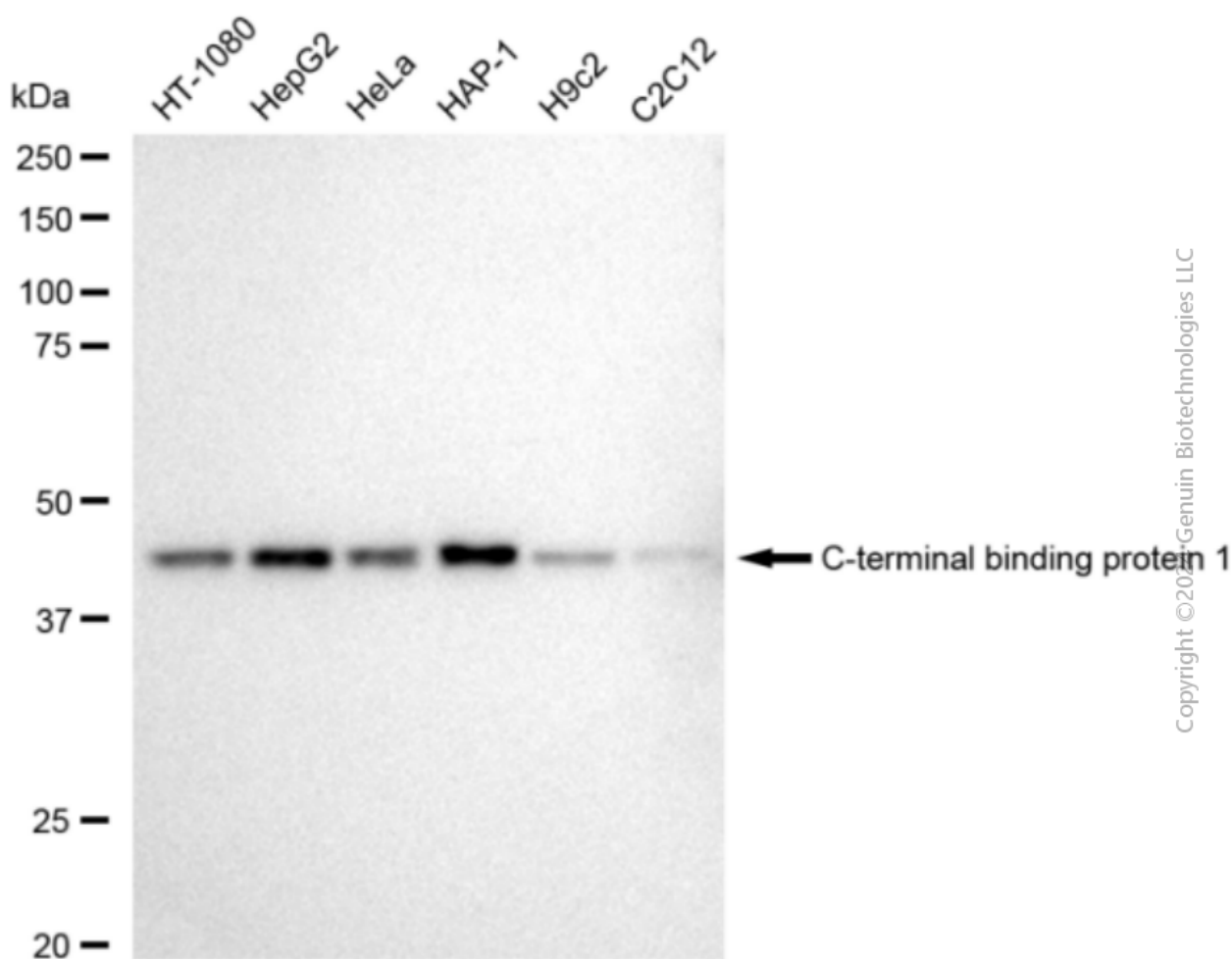
**ORDERS**

SALES@GENUINBIOTECH.COM  
FAX: +1-540-855-7041

**WWW.GENUINBIOTECH.COM**

## Anti-C-terminal binding protein 1 Recombinant Rabbit Monoclonal Antibody

PAGE 3



Western blotting analysis using anti-C-terminal binding protein 1 antibody (Cat#1917). Total cell lysates (30 µg) from various cell lines were loaded and separated by SDS-PAGE. The blot was incubated with anti-C-terminal binding protein 1 antibody (Cat#1917, 1:5,000) and HRP-conjugated goat anti-rabbit secondary antibody (Cat#201, 1:20,000) respectively. Image was developed using FeQ™ ECL Substrate Kit (Cat#226).

### SUPPORT

SUPPORT@GENUINBIOTECH.COM  
TEL: +1-540-855-7041

### ORDERS

SALES@GENUINBIOTECH.COM  
FAX: +1-540-855-7041

WWW.GENUINBIOTECH.COM