

# Anti-CYBB Recombinant Rabbit Monoclonal Antibody



**Catalog #: 1921**

## Aliases

CYBB; Cytochrome B-245 Beta Chain; NOX2; Cytochrome B-245 Heavy Chain; Cytochrome B558 Subunit Beta; NADPH Oxidase 2; GP91-PHOX; Superoxide-Generating NADPH Oxidase Heavy Chain Subunit; Heme-Binding Membrane Glycoprotein Gp91phox; Neutrophil Cytochrome B 91 KDa Polypeptide; Cytochrome B(558) Subunit Beta; P22 Phagocyte B-Cytochrome; CGD91-Phox; GP91PHOX; P91-PHOX; CGD; Cytochrome B-245, Beta Polypeptide; Cytochrome B-245 Beta Polypeptide; Chronic Granulomatous Disease; EC 1.-.-.; Gp91-Phox; EC 1.6.3; AMCBX2; GP91-1; Gp91-1; IMD34; CGDX

## Background

Gene Name: CYBB

NCBI Gene Entry: [1536](#)

UniProt Entry: [P04839](#)

## Application Information

Molecular Weight: Predicted, 65 kDa; observed, 65 kDa

Clonality: Rabbit monoclonal antibody

Clone ID: 23GB5135

Species Reactivity: Human, mouse, rat

Applications Tested: Western blotting (WB), immunocytochemistry (IC), flow cytometry (FCM)

## Immunogen

A synthesized peptide derived from human NOX2/CYBB/gp91phox

## Isotype

Rabbit IgG

## Storage Buffer

Supplied in PBS (pH 7.4) containing 50% glycerol, and 0.02% sodium azide.

## Storage

Store at -20 °C for one year.

## Recommended Dilutions

Western Blotting (WB): 1:1,000-1:5,000

Immunocytochemistry (IC): 1:100-1:1,000

---

### SUPPORT

SUPPORT@GENUINBIOTECH.COM  
TEL: +1-540-855-7041

### ORDERS

SALES@GENUINBIOTECH.COM  
FAX: +1-540-855-7041

[WWW.GENUINBIOTECH.COM](http://WWW.GENUINBIOTECH.COM)

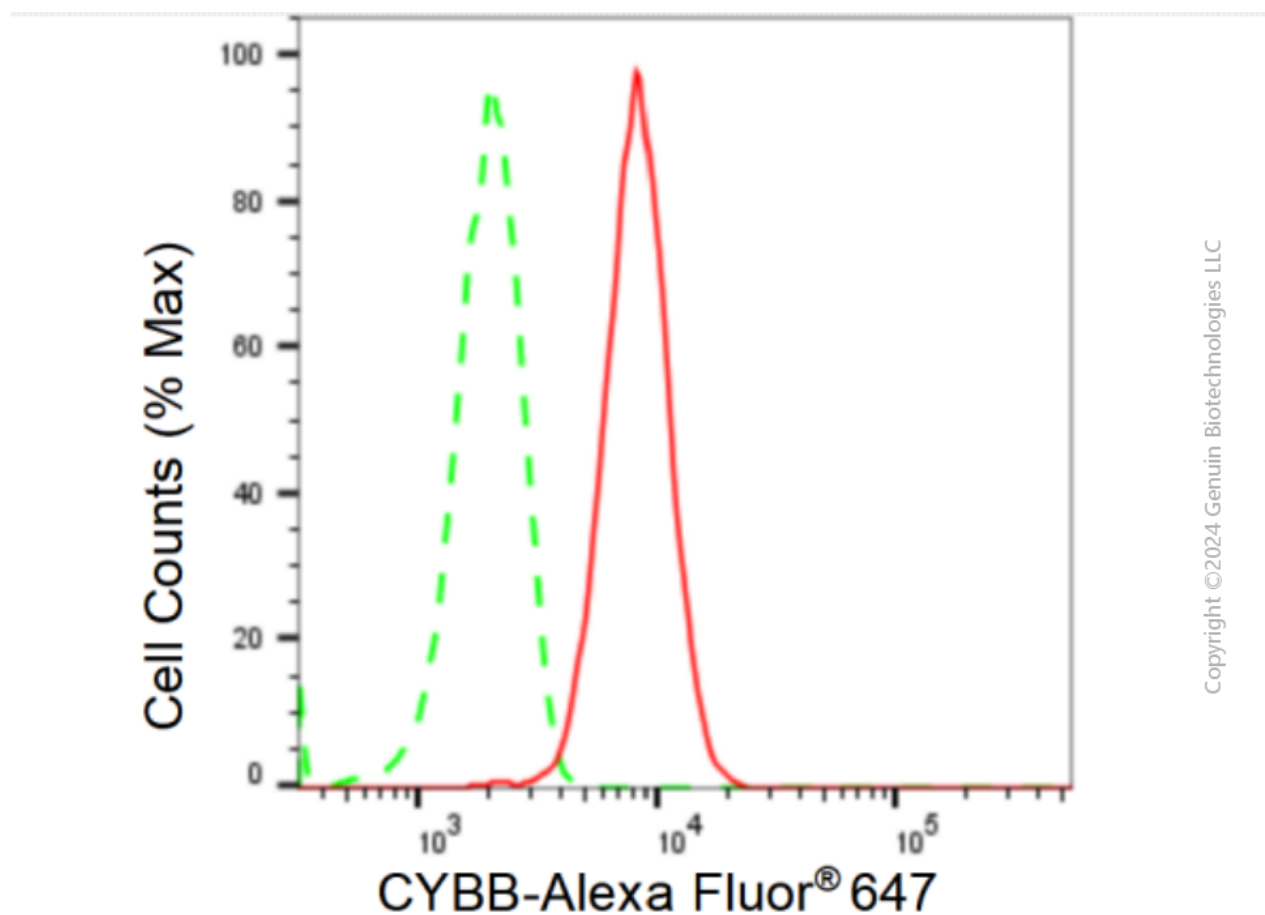
# Anti-CYBB Recombinant Rabbit Monoclonal Antibody

PAGE 2

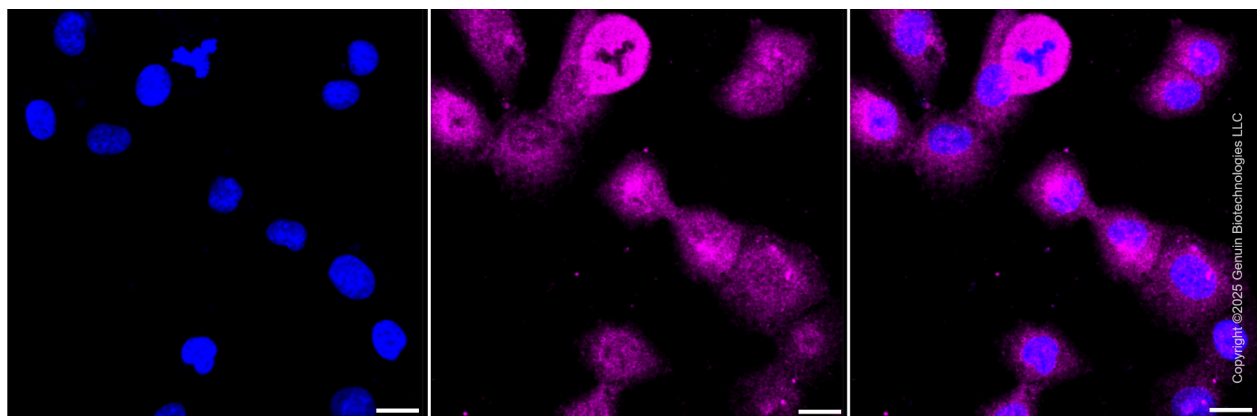
Flow Cytometry (FCM): 1:2,000

**Note:** This product is for research use only.

## Validation Data



Flow cytometric analysis of CYBB expression in HT-1080 cells using CYBB antibody (Cat#1921, 1:2,000). Green, isotype control; red, CYBB.



Immunocytochemical staining of HT-1080 cells with anti-CYBB antibody (Cat #1921, 1:1,000) .

### SUPPORT

SUPPORT@GENUINBIOTECH.COM  
TEL: +1-540-855-7041

### ORDERS

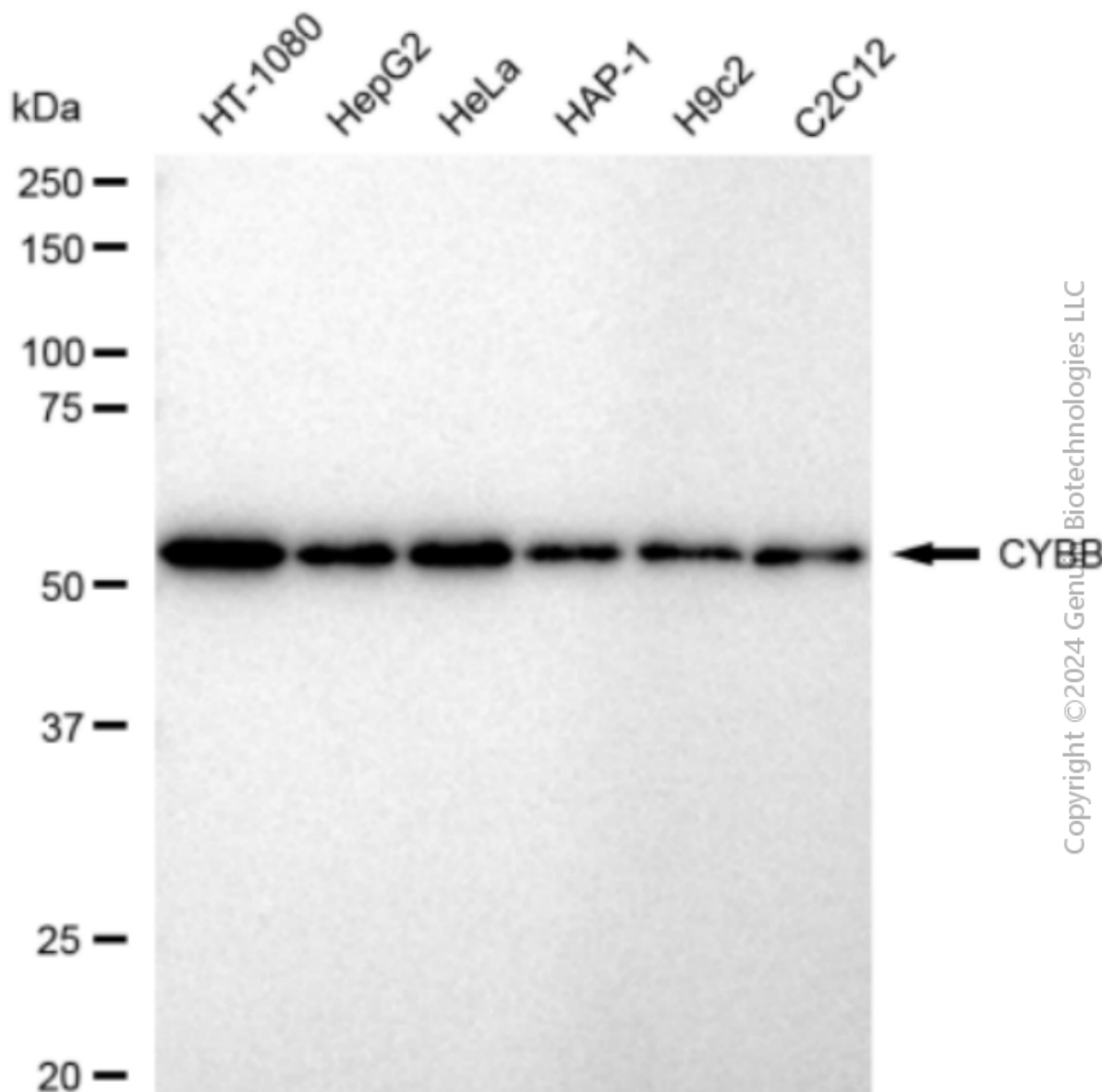
SALES@GENUINBIOTECH.COM  
FAX: +1-540-855-7041

[WWW.GENUINBIOTECH.COM](http://WWW.GENUINBIOTECH.COM)

## Anti-CYBB Recombinant Rabbit Monoclonal Antibody

PAGE 3

Nuclei were stained blue with DAPI; CYBB was stained magenta with Alexa Fluor® 647. Images were taken using Leica stellaris 5. Protein abundance based on laser Intensity and smart gain: Medium. Scale bar, 20 µm.



Western blotting analysis using anti-CYBB antibody (Cat#1921). Total cell lysates (30 µg) from various cell lines were loaded and separated by SDS-PAGE. The blot was incubated with anti-CYBB antibody (Cat#1921, 1:5,000) and HRP-conjugated goat anti-rabbit secondary antibody (Cat#201, 1:20,000) respectively. Image was developed using FeQ™ ECL Substrate Kit (Cat#226).

### SUPPORT

SUPPORT@GENUINBIOTECH.COM  
TEL: +1-540-855-7041

### ORDERS

SALES@GENUINBIOTECH.COM  
FAX: +1-540-855-7041

WWW.GENUINBIOTECH.COM