

# Anti-DNAJC15 Recombinant Rabbit Monoclonal Antibody



**Catalog #: 1927**

## Aliases

DNAJC15; DnaJ Heat Shock Protein Family (Hsp40) Member C15; MCJ; DNAJD1; DnaJ (Hsp40) Homolog, Subfamily C, Member 15; DnaJ (Hsp40) Homolog, Subfamily D, Member 1; Cell Growth-Inhibiting Gene 22 Protein; DnaJ Homolog Subfamily C Member 15; Methylation-Controlled J Protein; DNAJ Domain-Containing; HSD18

## Background

Gene Name: DNAJC15

NCBI Gene Entry: [29103](#)

UniProt Entry: [Q9Y5T4](#)

## Application Information

Molecular Weight: Predicted, 16 kDa; observed, 16 kDa

Clonality: Rabbit monoclonal antibody

Clone ID: 23GB5160

Species Reactivity: Human, mouse, rat

Applications Tested: Western blotting (WB), flow cytometry (FCM), immunocytochemistry (IC)

## Immunogen

A synthesized peptide derived from human DNAJC15

## Isotype

Rabbit IgG

## Storage Buffer

Supplied in PBS (pH 7.4) containing 50% glycerol, and 0.02% sodium azide.

## Storage

Store at -20 °C for one year.

## Recommended Dilutions

Western Blotting (WB): 1:1,000-1:5,000

Flow Cytometry (FCM): 1:2,000

Immunocytochemistry (IC): 1:100-1:1,000

---

### SUPPORT

SUPPORT@GENUINBIOTECH.COM  
TEL: +1-540-855-7041

### ORDERS

SALES@GENUINBIOTECH.COM  
FAX: +1-540-855-7041

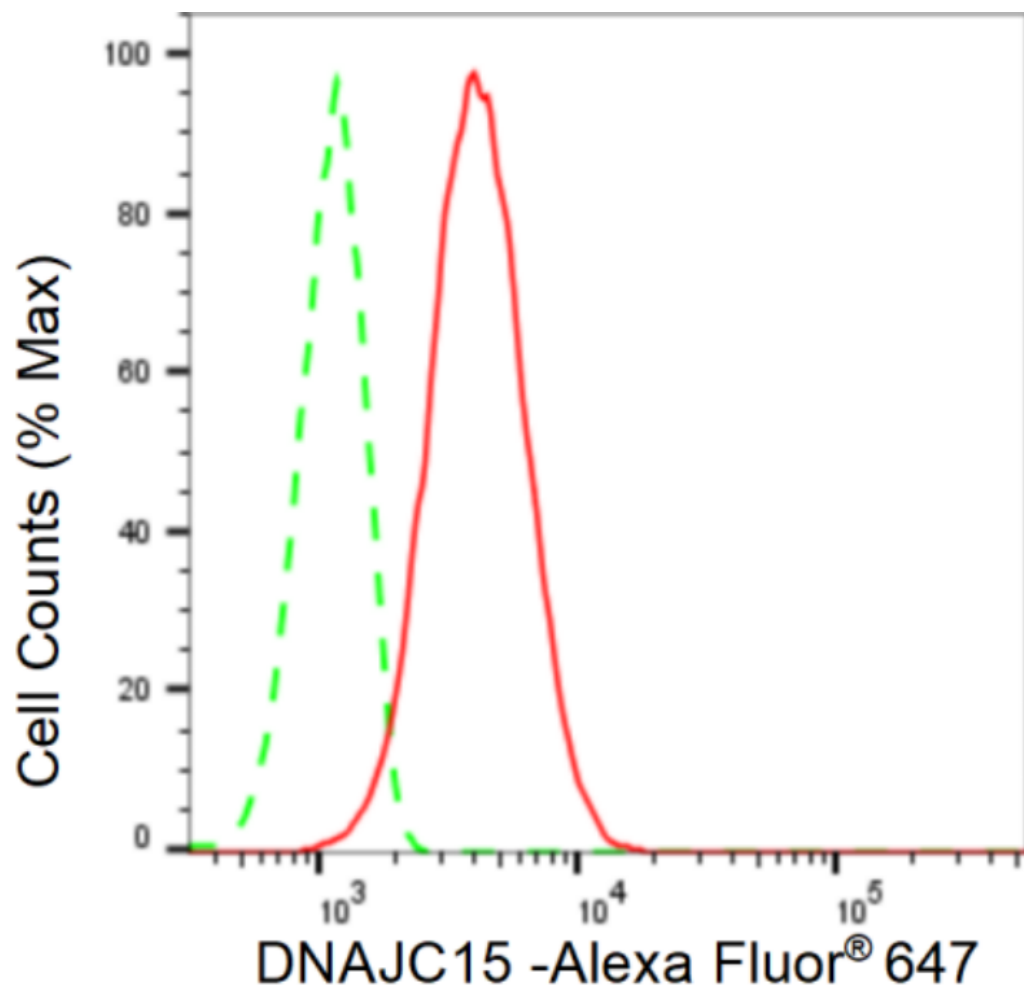
[WWW.GENUINBIOTECH.COM](http://WWW.GENUINBIOTECH.COM)

# Anti-DNAJC15 Recombinant Rabbit Monoclonal Antibody

PAGE 2

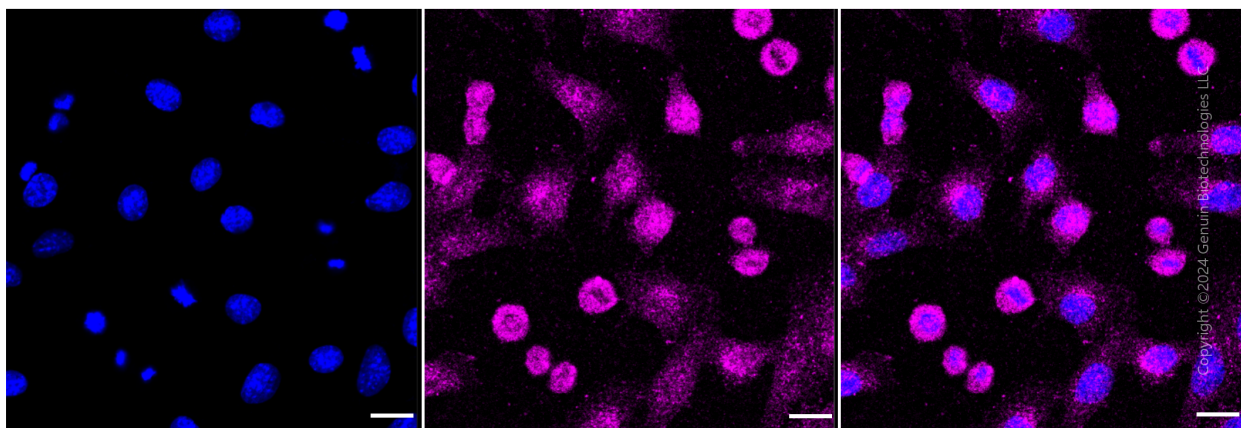
**Note:** This product is for research use only.

## Validation Data



Copyright ©2024 Genuin Biotechnologies LLC

Flow cytometric analysis of DNAJC15 expression in C2C12 cells using DNAJC15 antibody (1927, 1:2,000). Green, isotype control; red, DNAJC15 .



Copyright ©2024 Genuin Biotechnologies LLC

### SUPPORT

SUPPORT@GENUINBIOTECH.COM  
TEL: +1-540-855-7041

### ORDERS

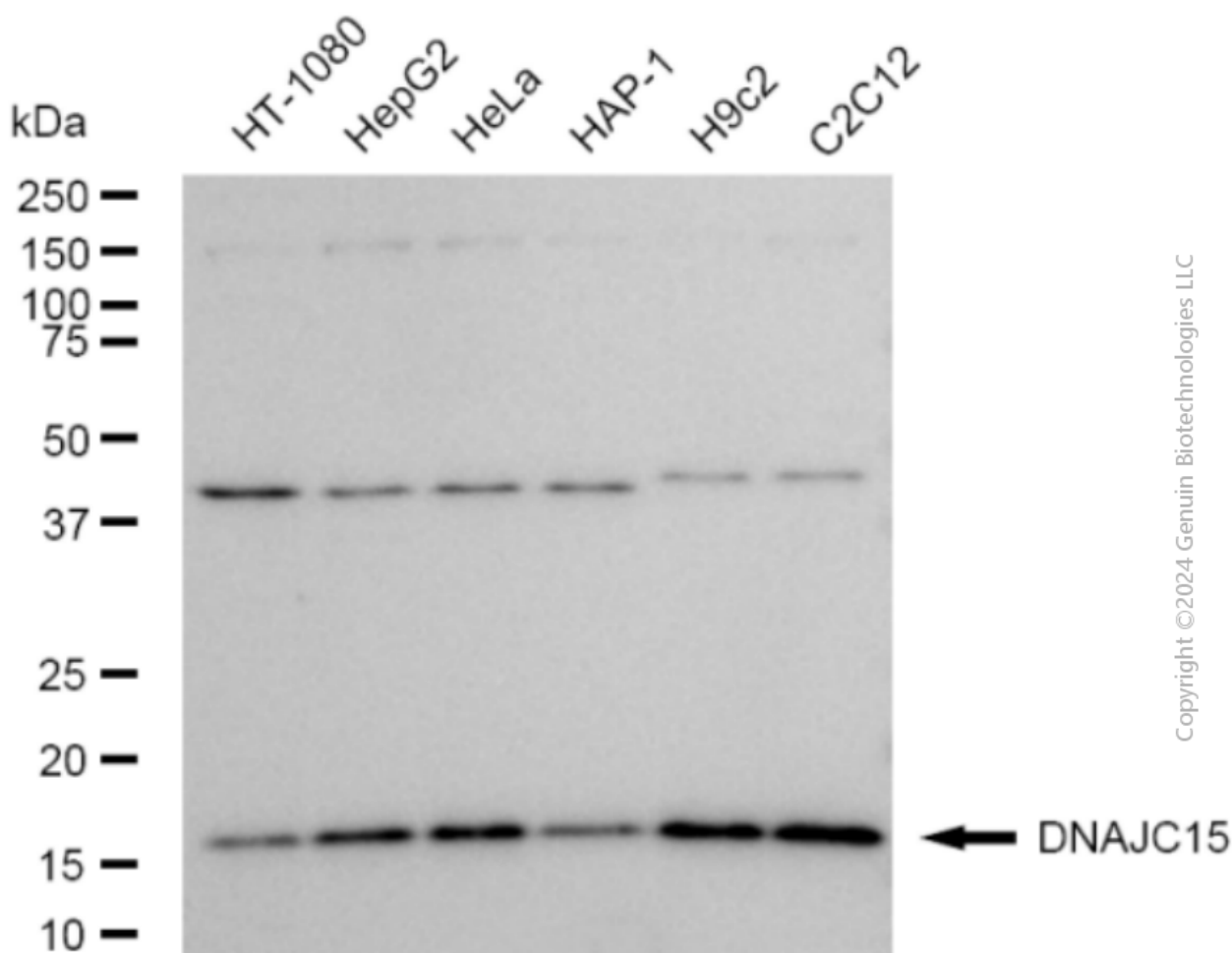
SALES@GENUINBIOTECH.COM  
FAX: +1-540-855-7041

WWW.GENUINBIOTECH.COM

## Anti-DNAJC15 Recombinant Rabbit Monoclonal Antibody

PAGE 3

Immunocytochemical staining of C2C12 cells with anti-DNAJC15 antibody (Cat#1927, 1:1,000). Nuclei were stained blue with DAPI; DNAJC15 was stained magenta with Alexa Fluor® 647. Images were taken using Leica stellaris 5. Protein abundance based on laser Intensity and smart gain: Low. Scale bar: 20  $\mu$ m.



Western blotting analysis using anti-DNAJC15 antibody (Cat#1927). Total cell lysates (30  $\mu$ g) from various cell lines were loaded and separated by SDS-PAGE. The blot was incubated with anti-DNAJC15 antibody (Cat#1927, 1:5,000) and HRP-conjugated goat anti-rabbit secondary antibody (Cat#201, 1:20,000) respectively. Image was developed using FeQ™ ECL Substrate Kit (Cat#226).

### SUPPORT

SUPPORT@GENUINBIOTECH.COM  
TEL: +1-540-855-7041

### ORDERS

SALES@GENUINBIOTECH.COM  
FAX: +1-540-855-7041

WWW.GENUINBIOTECH.COM