

Anti-DNPH1 Recombinant Rabbit Monoclonal Antibody



Catalog #: 1931

Aliases

DNPH1; 2'-Deoxynucleoside 5'-Phosphate N-Hydrolase 1; DJ330M21.3; RCL; C-Myc-Responsive Protein RCL; C6orf108; Deoxyribonucleoside 5'-Monophosphate N-Glycosidase; Chromosome 6 Open Reading Frame 108; Putative C-Myc-Responsive; EC 3.2.2.-; C6ORF108; Rcl

Background

Gene Name: DNPH1

NCBI Gene Entry: [10591](#)

UniProt Entry: [O43598](#)

Application Information

Molecular Weight: Predicted, 19 kDa; observed, 21 kDa

Clonality: Rabbit monoclonal antibody

Clone ID: 23GB5180

Species Reactivity: Human

Applications Tested: Western blotting (WB), immunocytochemistry (IC), flow cytometry (FCM)

Immunogen

A synthesized peptide derived from human DNPH1

Isotype

Rabbit IgG

Storage Buffer

Supplied in PBS (pH 7.4) containing 50% glycerol, and 0.02% sodium azide.

Storage

Store at -20 °C for one year.

Recommended Dilutions

Western Blotting (WB): 1:1,000-1:5,000

Immunocytochemistry (IC): 1:100-1:1,000

Flow Cytometry (FCM): 1:2,000

SUPPORT

SUPPORT@GENUINBIOTECH.COM
TEL: +1-540-855-7041

ORDERS

SALES@GENUINBIOTECH.COM
FAX: +1-540-855-7041

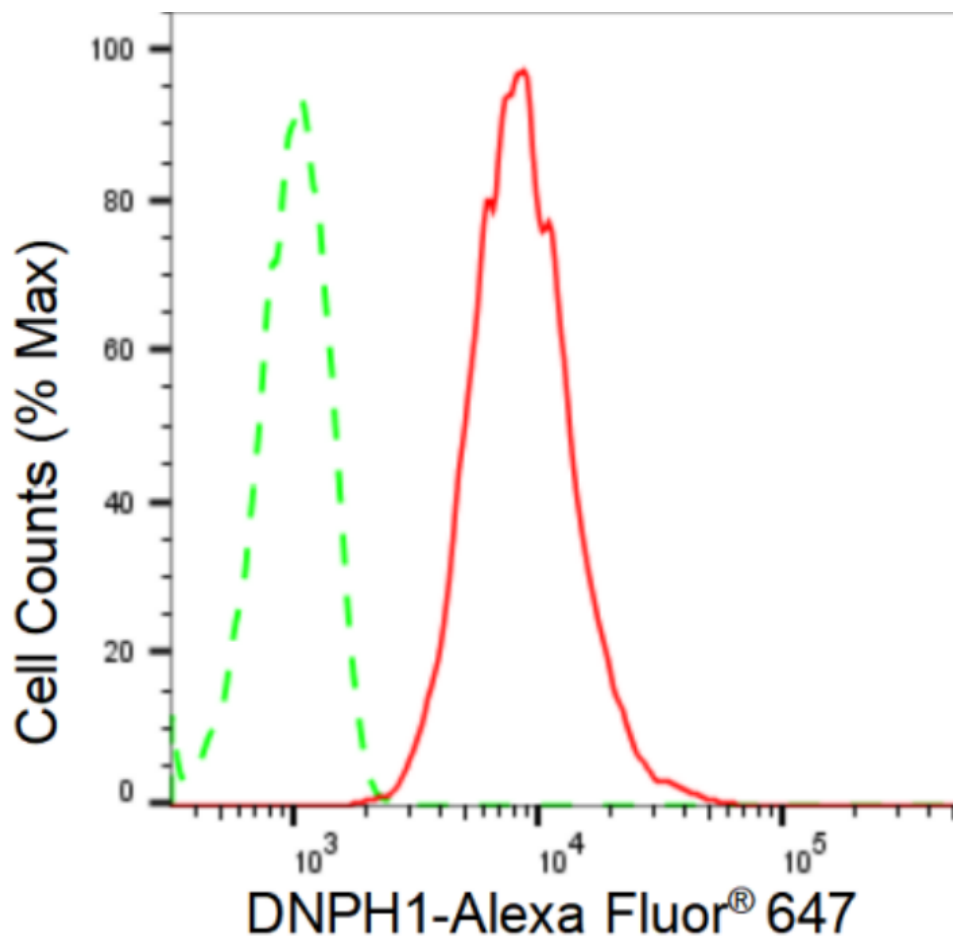
WWW.GENUINBIOTECH.COM

Anti-DNPH1 Recombinant Rabbit Monoclonal Antibody

PAGE 2

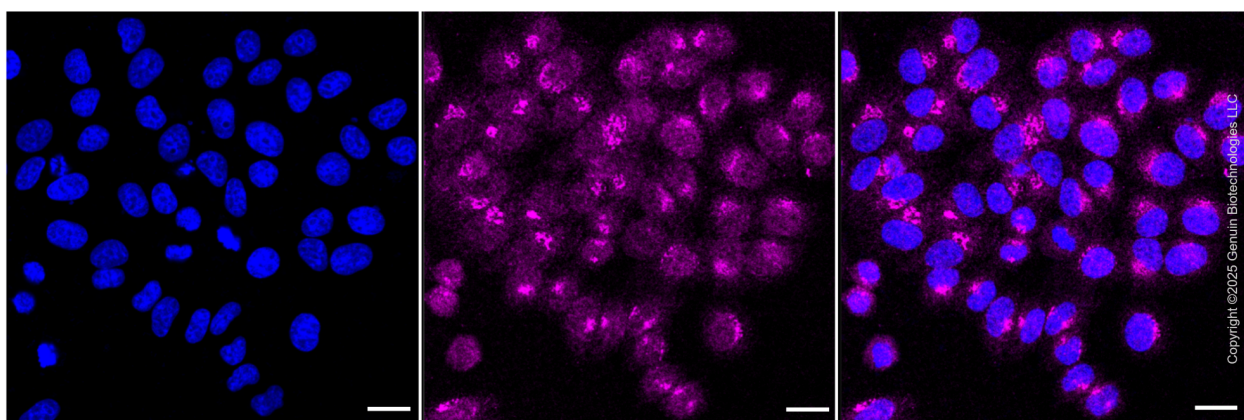
Note: This product is for research use only.

Validation Data



Copyright ©2024 Genuin Biotechnologies LLC

Flow cytometric analysis of DNPH1 expression in HepG2 cells using DNPH1 antibody (Cat#1931, 1:2,000). Green, isotype control; red, DNPH1.



Copyright ©2025 Genuin Biotechnologies LLC

SUPPORT

SUPPORT@GENUINBIOTECH.COM
TEL: +1-540-855-7041

ORDERS

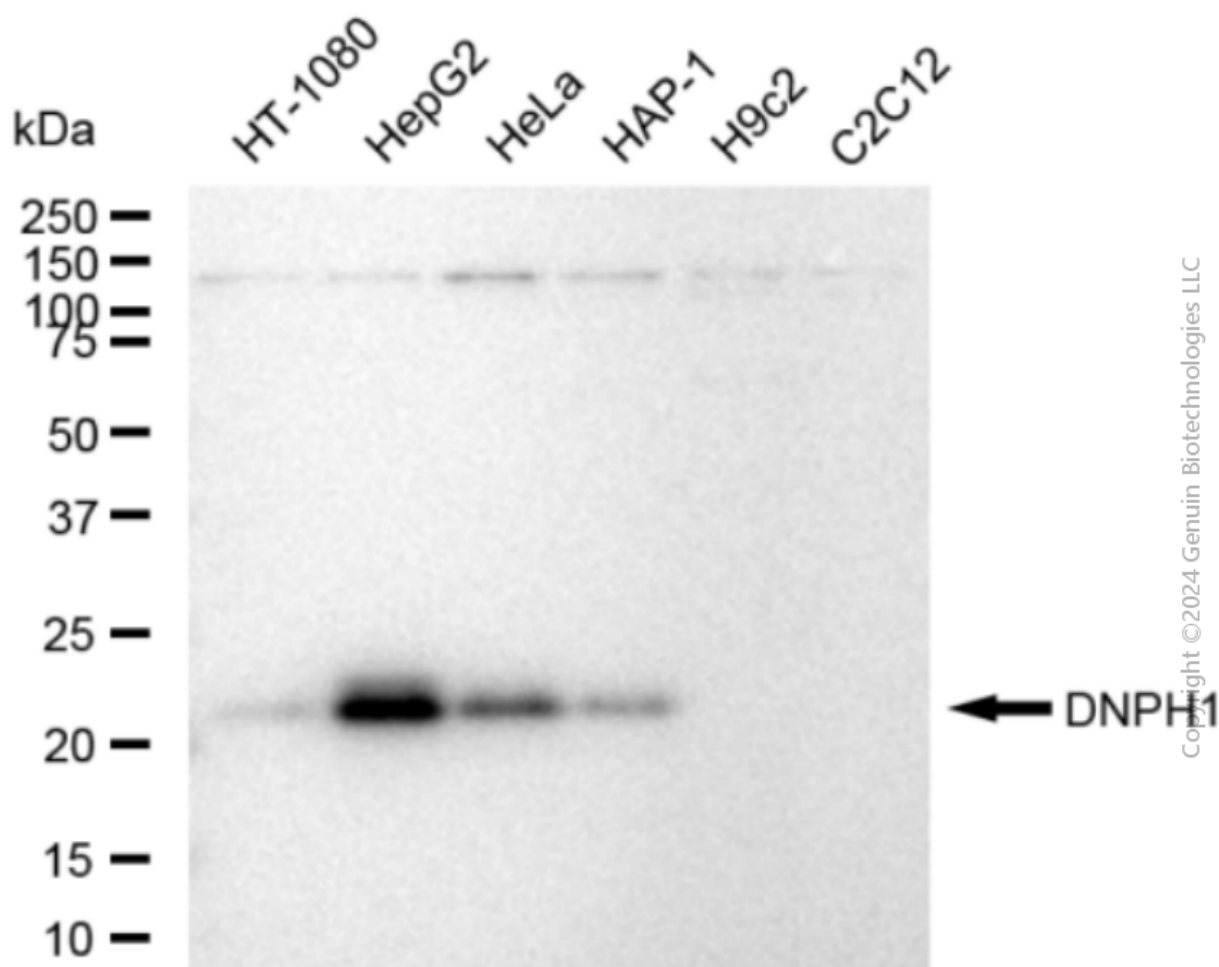
SALES@GENUINBIOTECH.COM
FAX: +1-540-855-7041

WWW.GENUINBIOTECH.COM

Anti-DNPH1 Recombinant Rabbit Monoclonal Antibody

PAGE 3

Images were taken using Leica stellaris 5. Protein abundance based on laser Intensity and smart gain: Medium. Scale bar, 20 μ m.



Western blotting analysis using anti-DNPH1 antibody (Cat#1931). Total cell lysates (30 μ g) from various cell lines were loaded and separated by SDS-PAGE. The blot was incubated with anti-DNPH1 antibody (Cat#1931, 1:5,000) and HRP-conjugated goat anti-rabbit secondary antibody (Cat#201, 1:20,000) respectively. Image was developed using FeQ™ ECL Substrate Kit (Cat#226).

SUPPORT

SUPPORT@GENUINBIOTECH.COM
TEL: +1-540-855-7041

ORDERS

SALES@GENUINBIOTECH.COM
FAX: +1-540-855-7041

WWW.GENUINBIOTECH.COM