

Anti-Docking protein 1 Recombinant Rabbit Monoclonal Antibody



Catalog #: 1933

Aliases

DOK1; Docking Protein 1; Downstream Of Tyrosine Kinase 1; P62DOK; Pp62; Docking Protein 1, 62kDa (Downstream Of Tyrosine Kinase 1); Docking Protein 1, 62kD (Downstream Of Tyrosine Kinase 1); P62(Dok); P62dok

Background

Gene Name: DOK1

NCBI Gene Entry: [1796](#)

UniProt Entry: [Q99704](#)

Application Information

Molecular Weight: Predicted, 52 kDa; observed, 65 kDa

Clonality: Rabbit monoclonal antibody

Clone ID: 23GB5185

Species Reactivity: Human, mouse, rat

Applications Tested: Western blotting (WB), immunocytochemistry (IC), flow cytometry (FCM)

Immunogen

A synthesized peptide derived from human DOK1

Isotype

Rabbit IgG

Storage Buffer

Supplied in PBS (pH 7.4) containing 50% glycerol, and 0.02% sodium azide.

Storage

Store at -20 °C for one year.

Recommended Dilutions

Western Blotting (WB): 1:1,000-1:5,000

Immunocytochemistry (IC): 1:100-1:1,000

Flow Cytometry (FCM): 1:2,000

Note: This product is for research use only.

SUPPORT

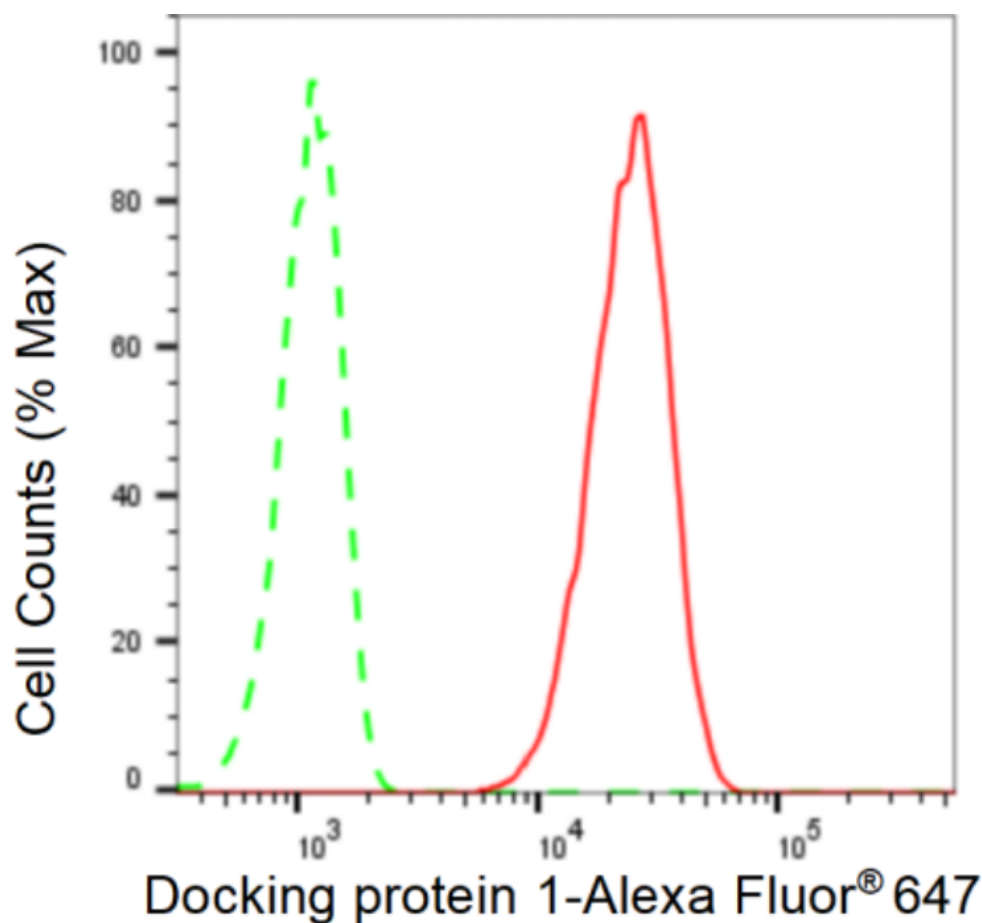
SUPPORT@GENUINBIOTECH.COM
TEL: +1-540-855-7041

ORDERS

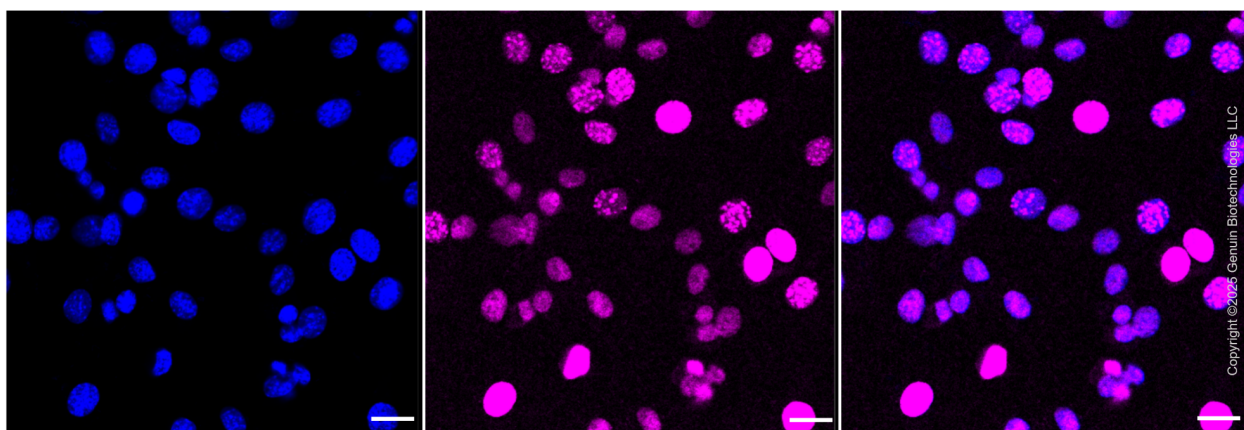
SALES@GENUINBIOTECH.COM
FAX: +1-540-855-7041

WWW.GENUINBIOTECH.COM

Validation Data



Flow cytometric analysis of Docking protein 1 expression in C2C12 cells using Docking protein 1 antibody (Cat#1933, 1:2,000). Green, isotype control; red, Docking protein 1.



Immunocytochemical staining of HepG2 cells with anti-Docking protein 1 antibody (Cat#1933, 1:1,000). Nuclei were stained blue with anti-DAPI; Docking protein 1 was stained magenta with Alexa Fluor® 647. Images were taken using Leica stellaris 5. Protein abundance based on laser

SUPPORT

SUPPORT@GENUINBIOTECH.COM
TEL: +1-540-855-7041

ORDERS

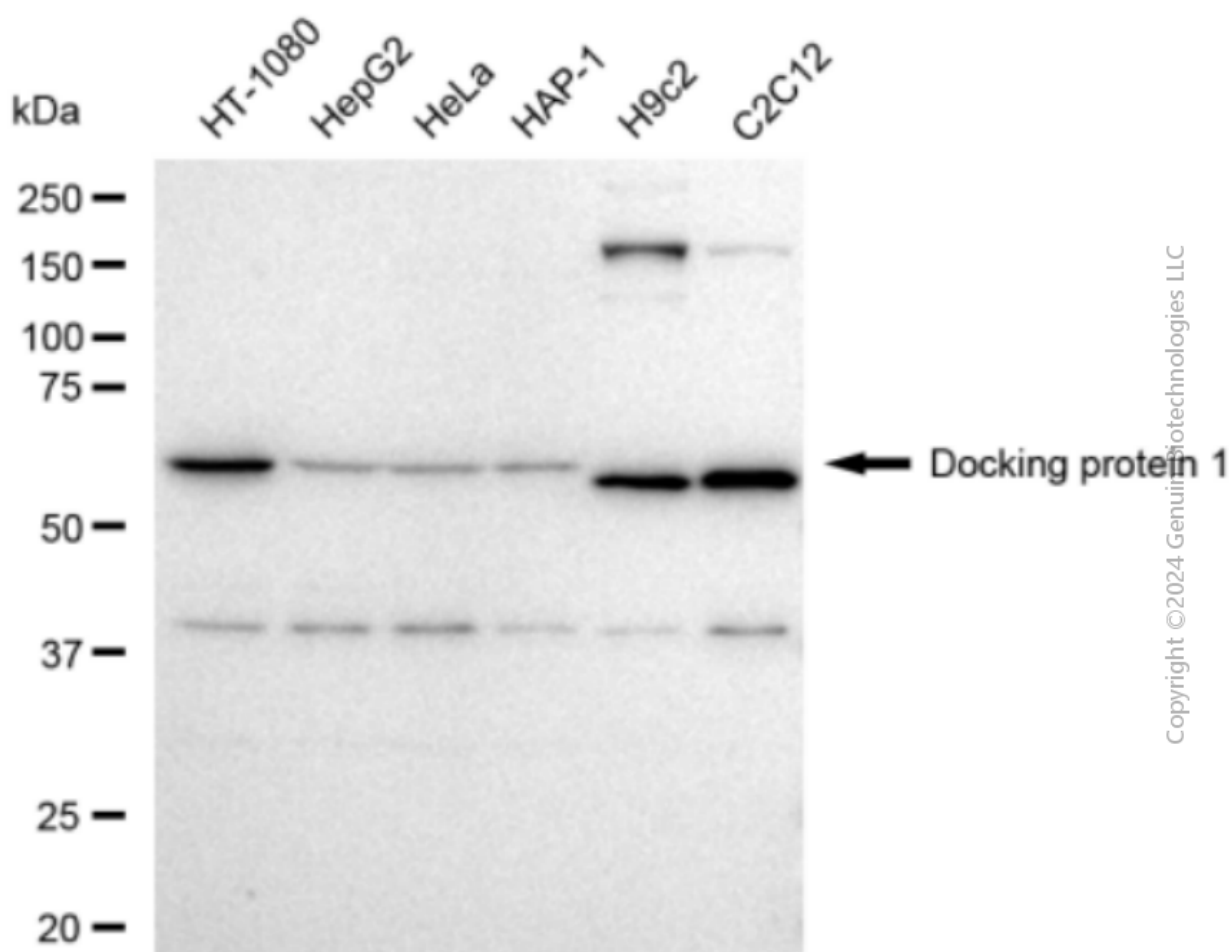
SALES@GENUINBIOTECH.COM
FAX: +1-540-855-7041

WWW.GENUINBIOTECH.COM

Anti-Docking protein 1 Recombinant Rabbit Monoclonal Antibody

PAGE 3

Intensity and smart gain: Medium. Scale bar, 20 μ m.



Western blotting analysis using anti-Docking protein 1 antibody (Cat#1933). Total cell lysates (30 μ g) from various cell lines were loaded and separated by SDS-PAGE. The blot was incubated with anti-Docking protein 1 antibody (Cat#1933, 1:5,000) and HRP-conjugated goat anti-rabbit secondary antibody (Cat#201, 1:20,000) respectively. Image was developed using FeQ™ ECL Substrate Kit (Cat#226).

SUPPORT

SUPPORT@GENUINBIOTECH.COM
TEL: +1-540-855-7041

ORDERS

SALES@GENUINBIOTECH.COM
FAX: +1-540-855-7041

WWW.GENUINBIOTECH.COM