

Anti-Dihydropyrimidine dehydrogenase Recombinant Rabbit Monoclonal Antibody



Catalog #: 1935

Aliases

DPYD; Dihydropyrimidine Dehydrogenase; DPD; Dihydrothymine Dehydrogenase;
Dihydrouracil Dehydrogenase ; Dihydropyrimidine Dehydrogenase [NADP(+)]; EC 1.3.1.2;
DHPDHase; DHPDHASE; DYPD; DHP

Background

Gene Name: DPYD

NCBI Gene Entry: [1806](#)

UniProt Entry: [Q12882](#)

Application Information

Molecular Weight: Predicted, 111 kDa; observed, 110 kDa

Clonality: Rabbit monoclonal antibody

Clone ID: 23GB5195

Species Reactivity: Human, rat

Applications Tested: Western blotting (WB), flow cytometry (FCM)

Immunogen

A synthesized peptide derived from human DPYD

Isotype

Rabbit IgG

Storage Buffer

Supplied in PBS (pH 7.4) containing 50% glycerol, and 0.02% sodium azide.

Storage

Store at -20 °C for one year.

Recommended Dilutions

Western Blotting (WB): 1:1,000-1:5,000

Flow Cytometry (FCM): 1:2,000

Note: This product is for research use only.

Validation Data

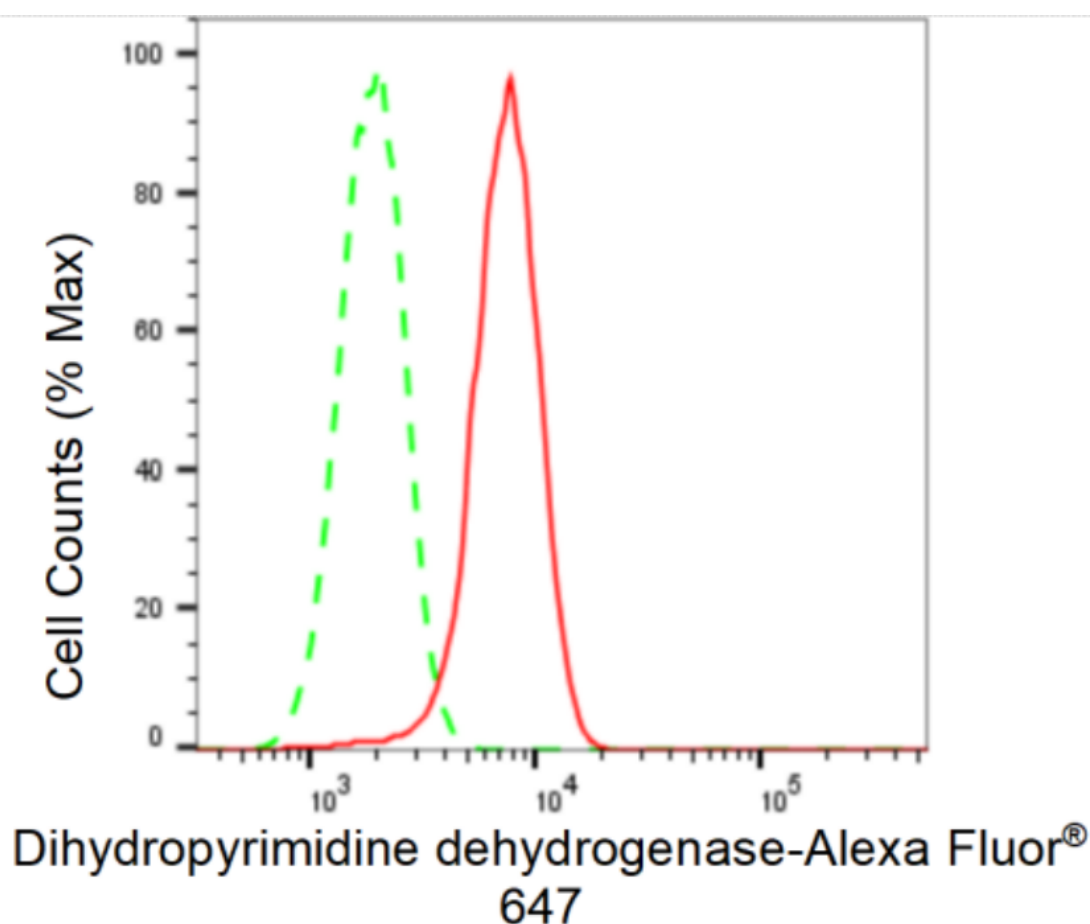
SUPPORT

SUPPORT@GENUINBIOTECH.COM
TEL: +1-540-855-7041

ORDERS

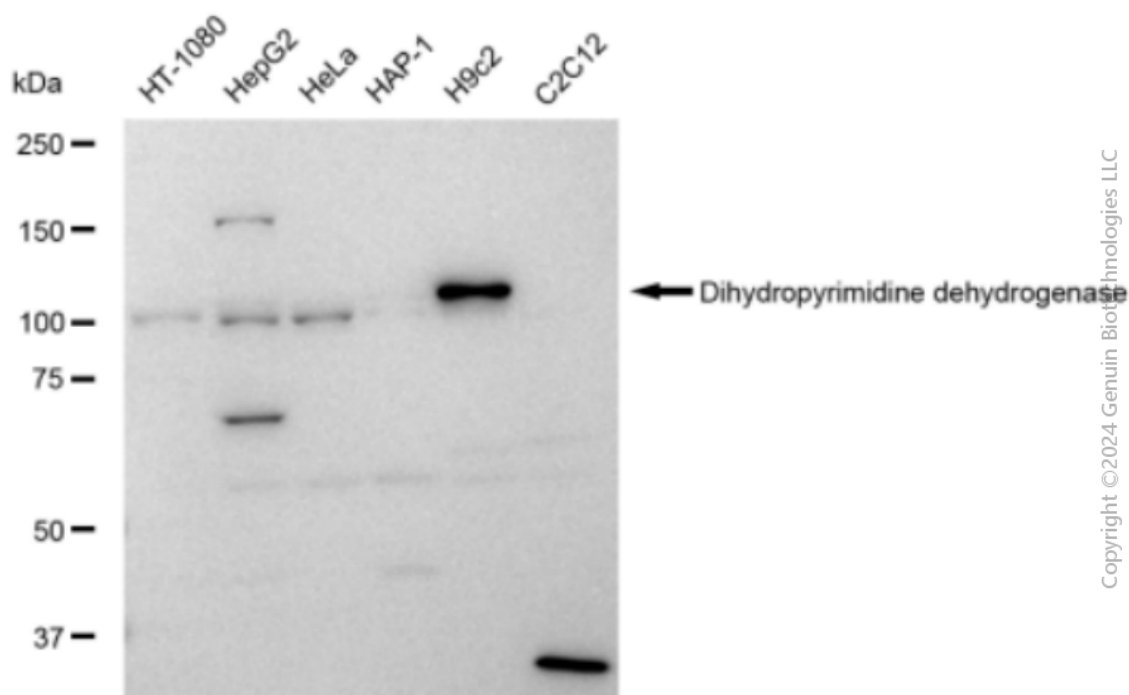
SALES@GENUINBIOTECH.COM
FAX: +1-540-855-7041

WWW.GENUINBIOTECH.COM



Copyright ©2024 Genuin Biotechnologies LLC

Flow cytometric analysis of Dihydropyrimidine dehydrogenase expression in H9c2 cells using Dihydropyrimidine dehydrogenase antibody (Cat#1935, 1:2,000). Green, isotype control; red, Dihydropyrimidine dehydrogenase.



Western blotting analysis using anti-Dihydropyrimidine dehydrogenase antibody (Cat#1935). Total cell lysates (30 µg) from various cell lines were loaded and separated by SDS-PAGE. The blot was incubated with anti-Dihydropyrimidine dehydrogenase antibody (Cat#1935, 1:5,000) and HRP-conjugated goat anti-rabbit secondary antibody (Cat#201, 1:20,000) respectively. Image was developed using FeQ™ ECL Substrate Kit (Cat#226).