

Anti-CDT2 Recombinant Rabbit Monoclonal Antibody



Catalog #: 1943

Aliases

DTL; Denticleless E3 Ubiquitin Protein Ligase Homolog; L2DTL; DCAF2; RAMP; CDT2; Retinoic Acid-Regulated Nuclear Matrix-Associated Protein; Lethal(2) Denticleless Protein Homolog; DDB1- And CUL4-Associated Factor ; Denticleless Protein Homolog; Denticleless E3 Ubiquitin Protein Ligase Homolog (Drosophila); RA Regulated Nuclear Matrix Associated Protein; RA-Regulated Nuclear Matrix-Associated Protein; DDB1 And CUL4 Associated Factor 2; Denticleless Homolog (Drosophila); CDW1

Background

Gene Name: DTL

NCBI Gene Entry: [51514](#)

UniProt Entry: [Q9NZJ0](#)

Application Information

Molecular Weight: Predicted, 79 kDa; observed, 91 kDa

Clonality: Rabbit monoclonal antibody

Clone ID: 23GB5230

Species Reactivity: Human, mouse, rat

Applications Tested: Western blotting (WB), flow cytometry (FCM), immunocytochemistry (IC)

Immunogen

A synthesized peptide derived from human CDT2

Isotype

Rabbit IgG

Storage Buffer

Supplied in PBS (pH 7.4) containing 50% glycerol, and 0.02% sodium azide.

Storage

Store at -20 °C for one year.

Recommended Dilutions

Western Blotting (WB): 1:1,000-1:5,000

Flow Cytometry (FCM): 1:2,000

Immunocytochemistry (IC): 1:100-1:1,000

SUPPORT

SUPPORT@GENUINBIOTECH.COM
TEL: +1-540-855-7041

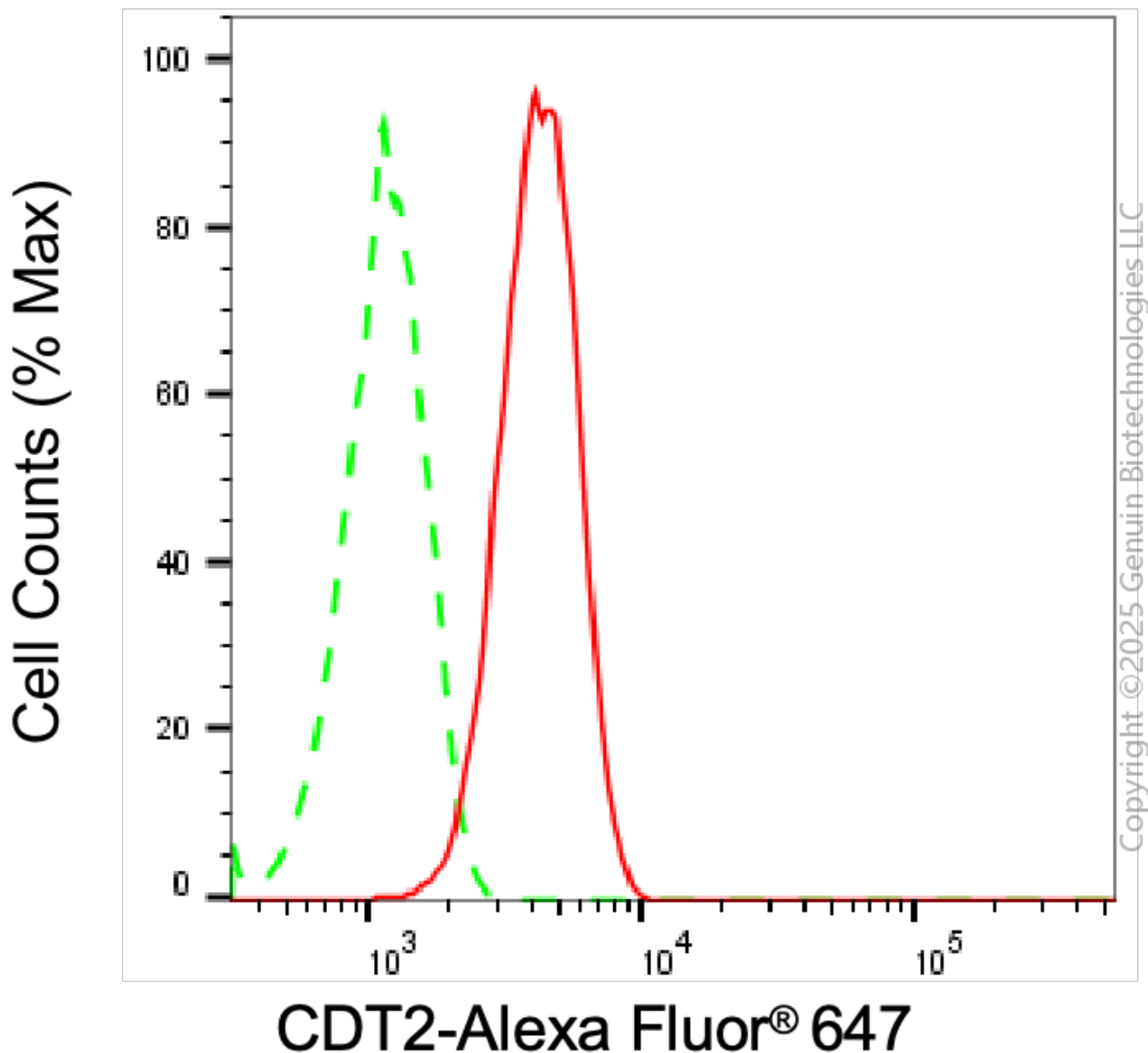
ORDERS

SALES@GENUINBIOTECH.COM
FAX: +1-540-855-7041

WWW.GENUINBIOTECH.COM

Note: This product is for research use only.

Validation Data



Flow cytometric analysis of CDT2 expression in HT-1080 cells using anti-CDT2 antibody (Cat#1943, 1 µg/2000). Green, isotype control; red, CDT2.

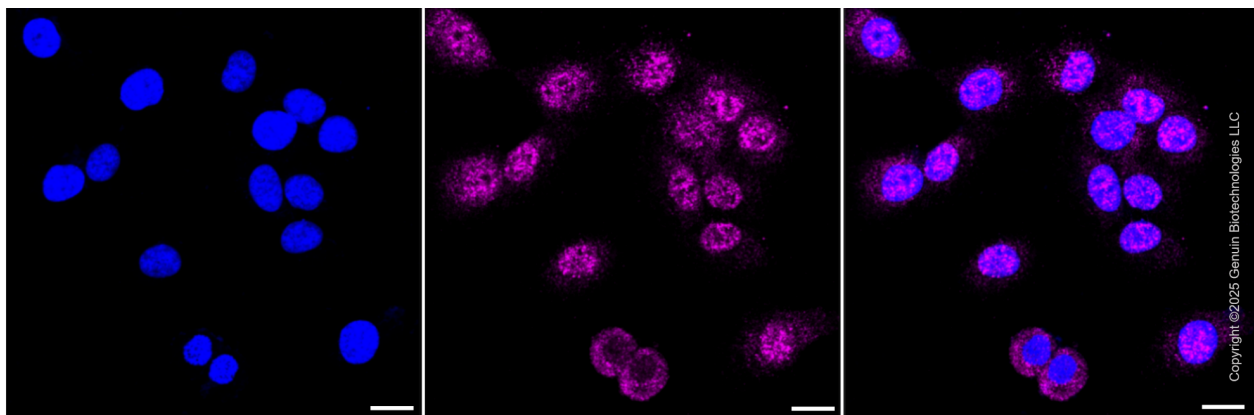
SUPPORT

SUPPORT@GENUINBIOTECH.COM
TEL: +1-540-855-7041

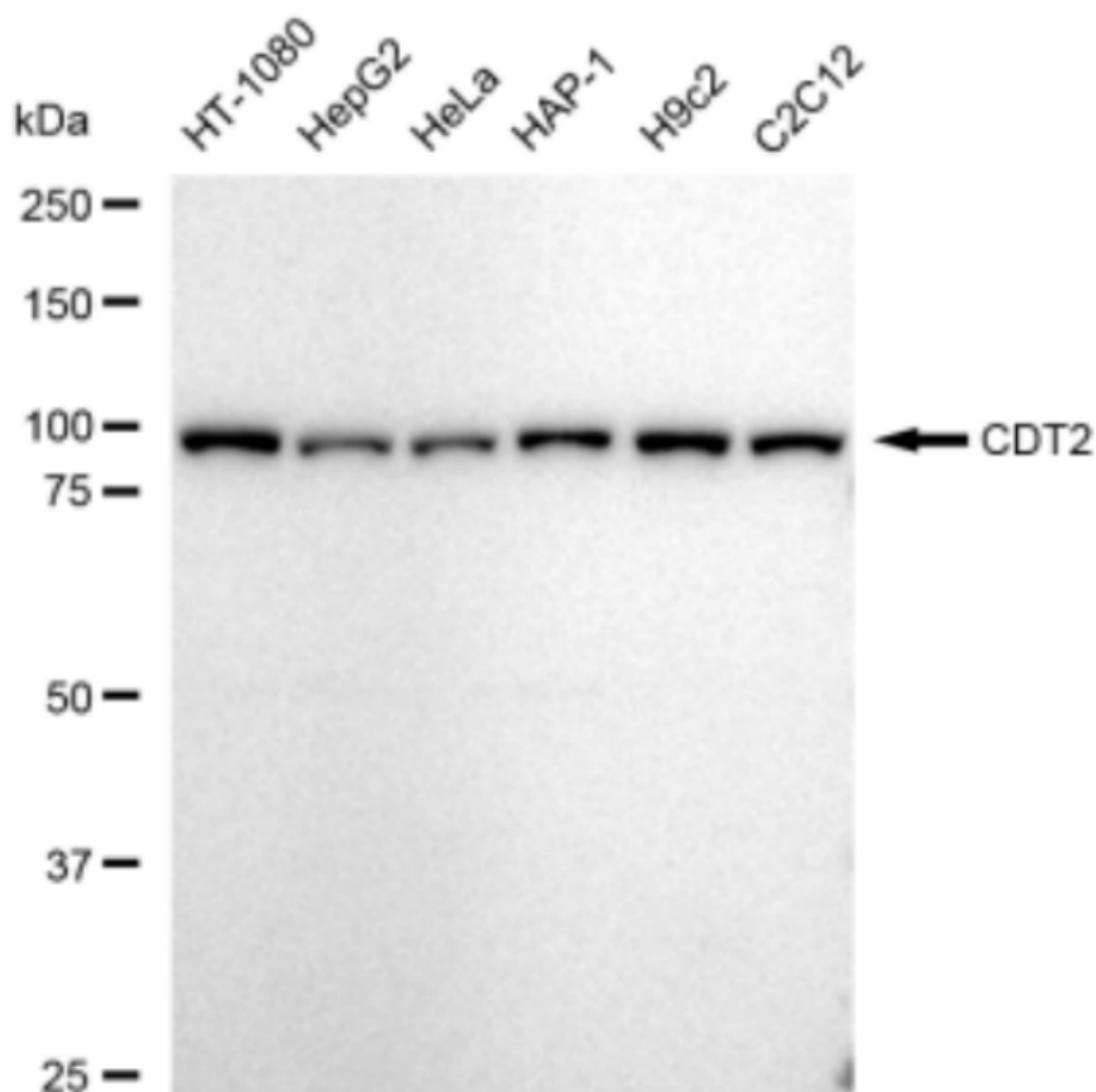
ORDERS

SALES@GENUINBIOTECH.COM
FAX: +1-540-855-7041

WWW.GENUINBIOTECH.COM



Immunocytochemical staining of HT-1080 cells with anti-CDT2 antibody (Cat #1943, 1:1,000) . Nuclei were stained blue with DAPI; CDT2 was stained magenta with Alexa Fluor® 647. Images were taken using Leica stellaris 5. Protein abundance based on laser Intensity and smart gain: Medium. Scale bar, 20 μ m.



Copyright ©2024 Genuin Biotechnologies LLC

Western blotting analysis using anti-CDT2 antibody (Cat#1943). Total cell lysates (30 µg) from various cell lines were loaded and separated by SDS-PAGE. The blot was incubated with anti-CDT2 antibody (Cat#1943, 1:5,000) and HRP-conjugated goat anti-rabbit secondary antibody (Cat#201, 1:20,000) respectively. Image was developed using FeQ™ ECL Substrate Kit (Cat#226).