

Anti-E2F6 Recombinant Rabbit Monoclonal Antibody



Catalog #: 1948

Aliases

E2F6; E2F Transcription Factor 6; E2F-6; Transcription Factor E2F6

Background

Gene Name: E2F6

NCBI Gene Entry: [1876](#)

UniProt Entry: [O75461](#)

Application Information

Molecular Weight: Predicted, 32 kDa; observed, 35 kDa

Clonality: Rabbit monoclonal antibody

Clone ID: 23GB5255

Species Reactivity: Human

Applications Tested: Western blotting (WB), immunocytochemistry (IC), flow cytometry (FCM)

Immunogen

A synthesized peptide derived from human E2F6

Isotype

Rabbit IgG

Storage Buffer

Supplied in PBS (pH 7.4) containing 50% glycerol, and 0.02% sodium azide.

Storage

Store at -20 °C for one year.

Recommended Dilutions

Western Blotting (WB): 1:1,000-1:5,000

Immunohistochemistry (IHC): 1:100-1:1,000

Flow Cytometry (FCM) : 1:2,000

Note: This product is for research use only.

Validation Data

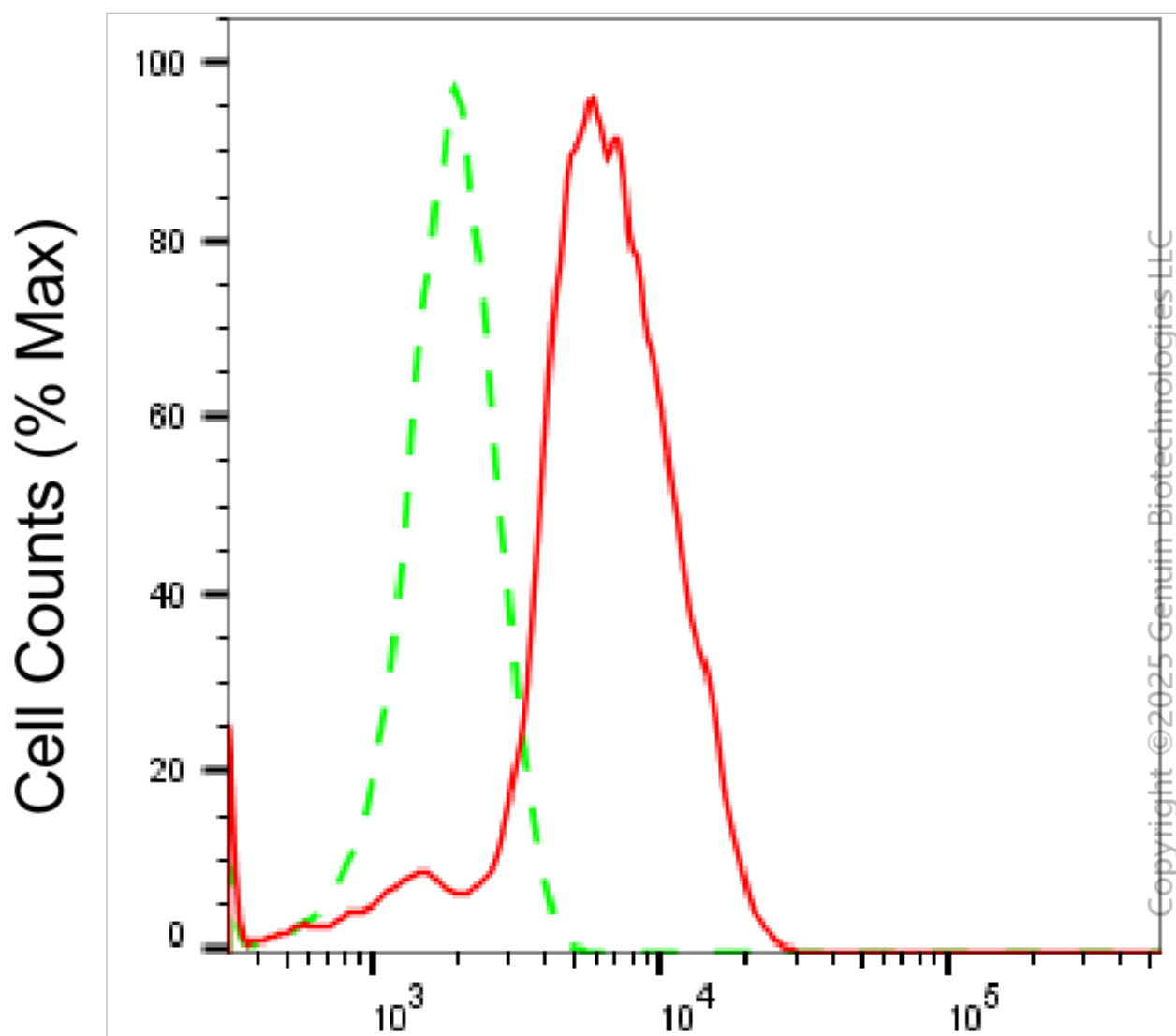
SUPPORT

SUPPORT@GENUINBIOTECH.COM
TEL: +1-540-855-7041

ORDERS

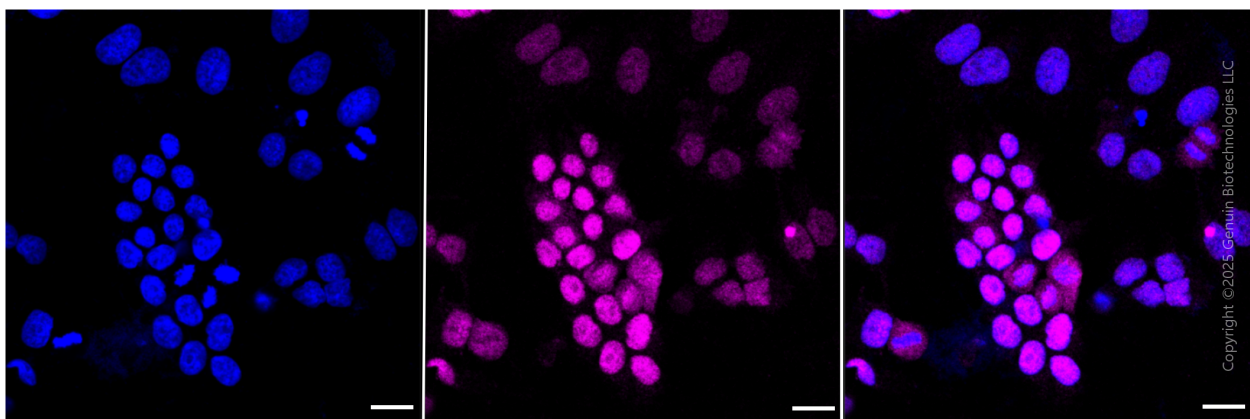
SALES@GENUINBIOTECH.COM
FAX: +1-540-855-7041

WWW.GENUINBIOTECH.COM

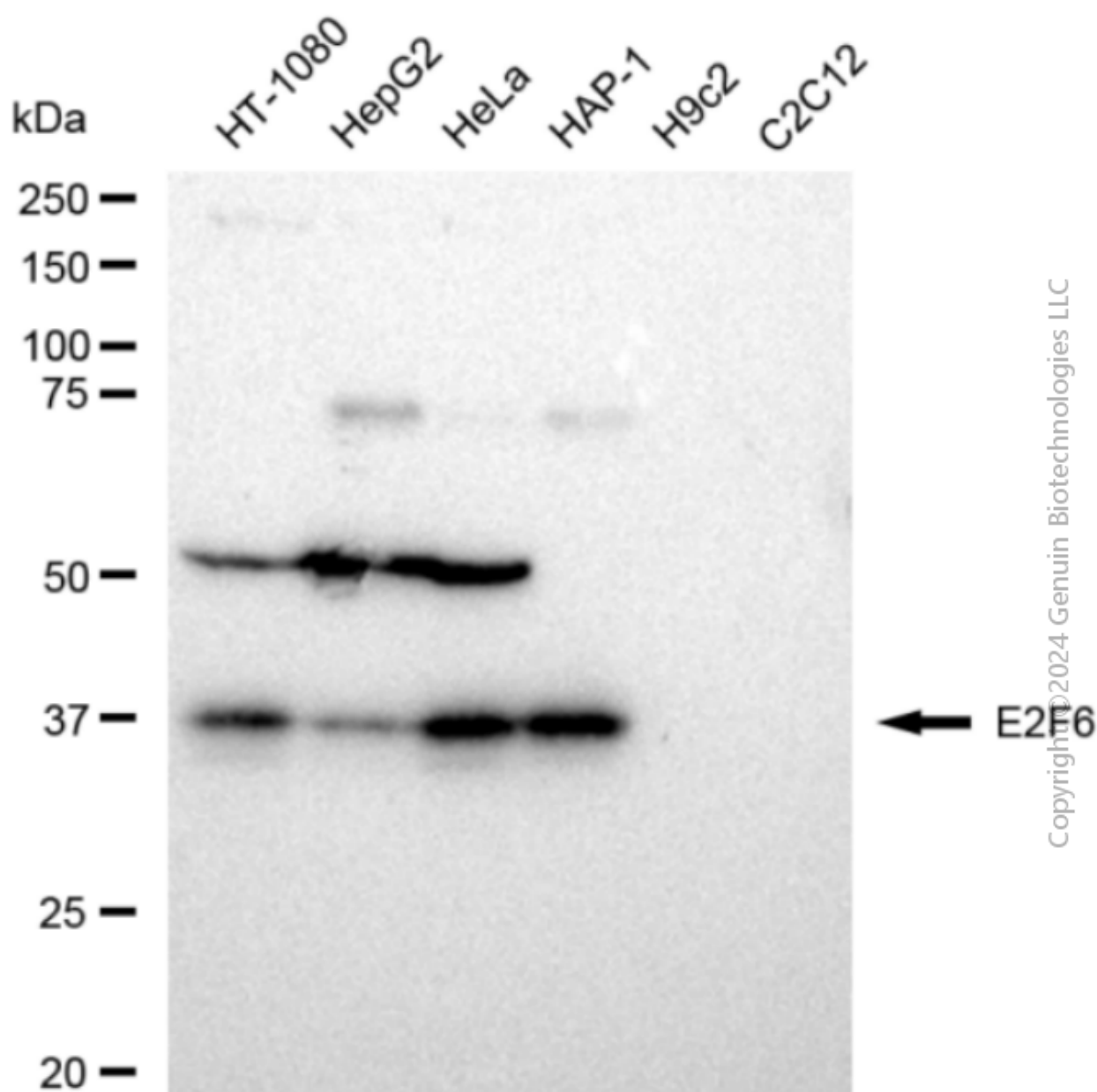


E2F6-Alexa Fluor® 647

Flow cytometric analysis of E2F6 expression in HeLa cells using anti-E2F6 antibody (Cat#1948, 1:2,000). Green, isotype control; red, E2F6.



Immunocytochemical staining of HeLa cells with anti-E2F6 antibody (Cat #1948, 1:1,000) . Nuclei were stained blue with DAPI; E2F6 was stained magenta with Alexa Fluor® 647. Images were taken using Leica stellaris 5. Protein abundance based on laser Intensity and smart gain: Medium. Scale bar, 20 μ m.



Western blotting analysis using anti-E2F6 antibody (Cat#1948). Total cell lysates (30 μ g) from various cell lines were loaded and separated by SDS-PAGE. The blot was incubated with anti-E2F6 antibody (Cat#1948, 1:5,000) and HRP-conjugated goat anti-rabbit secondary antibody (Cat#201, 1:20,000) respectively. Image was developed using FeQ™ ECL Substrate Kit (Cat#226).