

Anti-eIF1A Recombinant Rabbit Monoclonal Antibody



Catalog #: 1954

Aliases

EIF1AX; Eukaryotic Translation Initiation Factor 1A X-Linked; EIF-4C; EIF-1A; EIF1A; EIF4C; Eukaryotic Translation Initiation Factor 1A, X-Chromosomal; Eukaryotic Translation Initiation Factor 1A, X Chromosome; Eukaryotic Translation Initiation Factor 4C; EIF1A X Isoform; Eukaryotic Translation Initiation Factor 1A, X-Linked; Putative Eukaryotic Translation Initiation Factor 1A; EIF-1A X Isoform; EIF1AP1

Background

Gene Name: EIF1AX

NCBI Gene Entry: [1964](#)

UniProt Entry: [P47813](#)

Application Information

Molecular Weight: Predicted, 16 kDa; observed, 18 kDa

Clonality: Rabbit monoclonal antibody

Clone ID: 23GB5285

Species Reactivity: Human, mouse, rat

Applications Tested: Western blotting (WB), immunocytochemistry (IC), flow cytometry (FCM)

Immunogen

A synthesized peptide derived from human eIF1A

Isotype

Rabbit IgG

Storage Buffer

Supplied in PBS (pH 7.4) containing 50% glycerol, and 0.02% sodium azide.

Storage

Store at -20 °C for one year.

Recommended Dilutions

Western Blotting (WB): 1:1,000-1:5,000

Immunocytochemistry (IC): 1:100-1:1,000

Flow Cytometry (FCM): 1:2,000

SUPPORT

SUPPORT@GENUINBIOTECH.COM
TEL: +1-540-855-7041

ORDERS

SALES@GENUINBIOTECH.COM
FAX: +1-540-855-7041

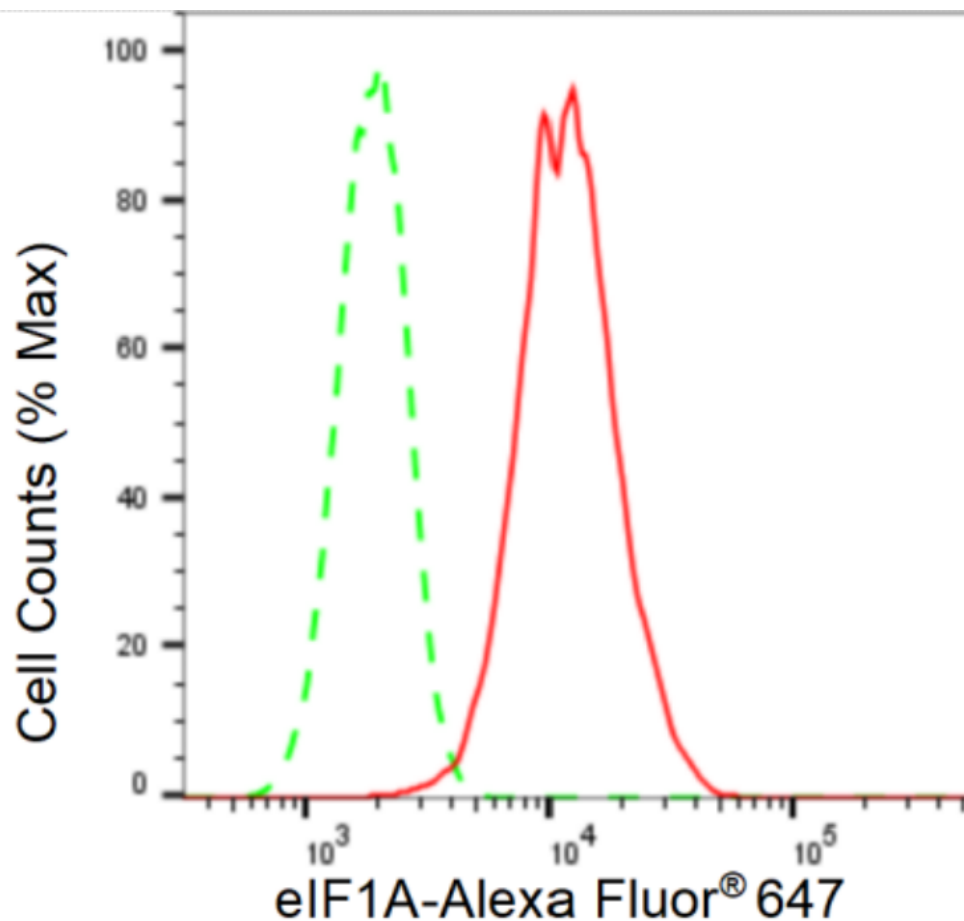
WWW.GENUINBIOTECH.COM

Anti-eIF1A Recombinant Rabbit Monoclonal Antibody

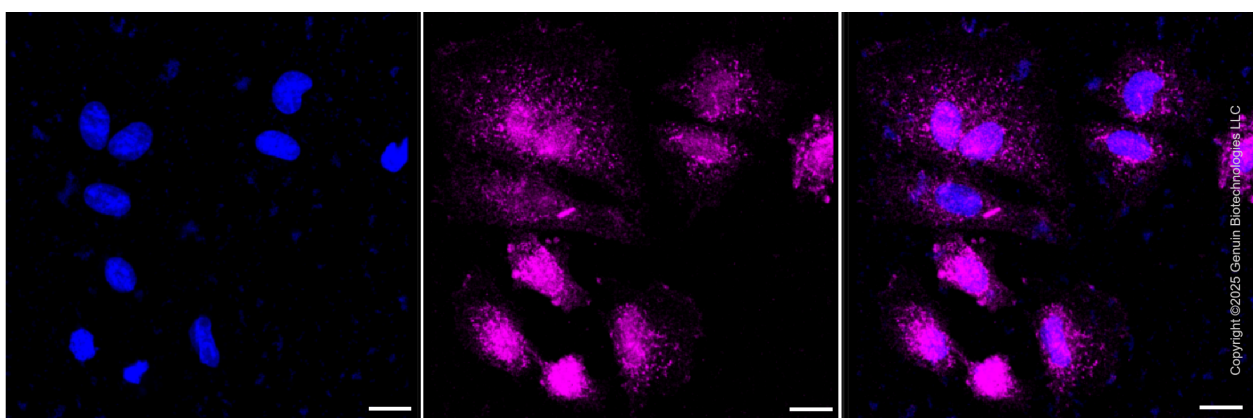
PAGE 2

Note: This product is for research use only.

Validation Data



Flow cytometric analysis of eIF1A expression in H9c2 cells using eIF1A antibody (Cat#1954, 1:2,000). Green, isotype control; red, eIF1A.



Immunocytochemical staining of H9c2 cells with anti-eIF1A antibody (Cat #1954, 1:1,000) . Nuclei were stained blue with DAPI; eIF1A was stained magenta with Alexa Fluor® 647. Images

SUPPORT

SUPPORT@GENUINBIOTECH.COM
TEL: +1-540-855-7041

ORDERS

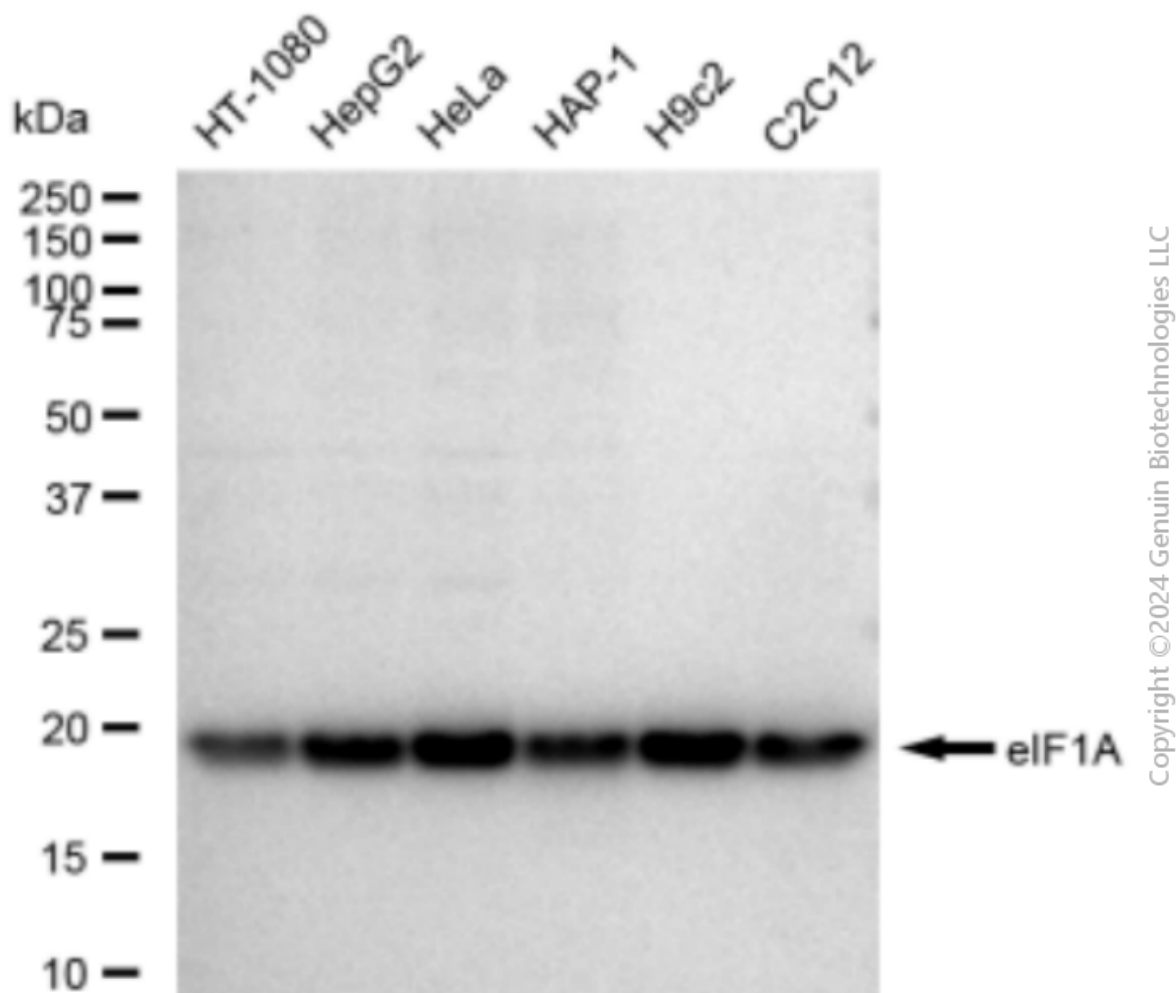
SALES@GENUINBIOTECH.COM
FAX: +1-540-855-7041

WWW.GENUINBIOTECH.COM

Anti-eIF1A Recombinant Rabbit Monoclonal Antibody

PAGE 3

were taken using Leica stellaris 5. Protein abundance based on laser Intensity and smart gain: Medium. Scale bar, 20 μ m.



Western blotting analysis using anti-eIF1A antibody (Cat#1954). Total cell lysates (30 μ g) from various cell lines were loaded and separated by SDS-PAGE. The blot was incubated with anti-eIF1A antibody (Cat#1954, 1:5,000) and HRP-conjugated goat anti-rabbit secondary antibody (Cat#201, 1:20,000) respectively. Image was developed using FeQ™ ECL Substrate Kit (Cat#226).

SUPPORT

SUPPORT@GENUINBIOTECH.COM
TEL: +1-540-855-7041

ORDERS

SALES@GENUINBIOTECH.COM
FAX: +1-540-855-7041

WWW.GENUINBIOTECH.COM