

Anti-EIF2B5 Recombinant Rabbit Monoclonal Antibody



Catalog #: 1957

Aliases

EIF2B5; Eukaryotic Translation Initiation Factor 2B Subunit Epsilon; EIF-2B; Eukaryotic Translation Initiation Factor 2B, Subunit 5 Epsilon, 82kDa; Translation Initiation Factor EIF-2B Subunit Epsilon; EIF-2B GDP-GTP Exchange Factor Subunit Epsilon; EIF2Bepsilon; Eukaryotic Translation Initiation Factor 2B, Subunit 5 (Epsilon, 82kD); EIF2BEPSILON; EIF2BE; CACH; LVWM; VWM5; CLE

Background

Gene Name: EIF2B5

NCBI Gene Entry: [8893](#)

UniProt Entry: [Q13144](#)

Application Information

Molecular Weight: Predicted, 80 kDa; observed, 80 kDa

Clonality: Rabbit monoclonal antibody

Clone ID: 23GB5300

Species Reactivity: Human

Applications Tested: Western blotting (WB), immunocytochemistry (IC), flow cytometry (FCM)

Immunogen

A synthesized peptide derived from human eIF2B epsilon

Isotype

Rabbit IgG

Storage Buffer

Supplied in PBS (pH 7.4) containing 50% glycerol, and 0.02% sodium azide.

Storage

Store at -20 °C for one year.

Recommended Dilutions

Western Blotting (WB): 1:1,000-1:5,000

Immunocytochemistry (IC): 1:100-1:1,000

Flow Cytometry (FCM): 1:2,000

SUPPORT

SUPPORT@GENUINBIOTECH.COM
TEL: +1-540-855-7041

ORDERS

SALES@GENUINBIOTECH.COM
FAX: +1-540-855-7041

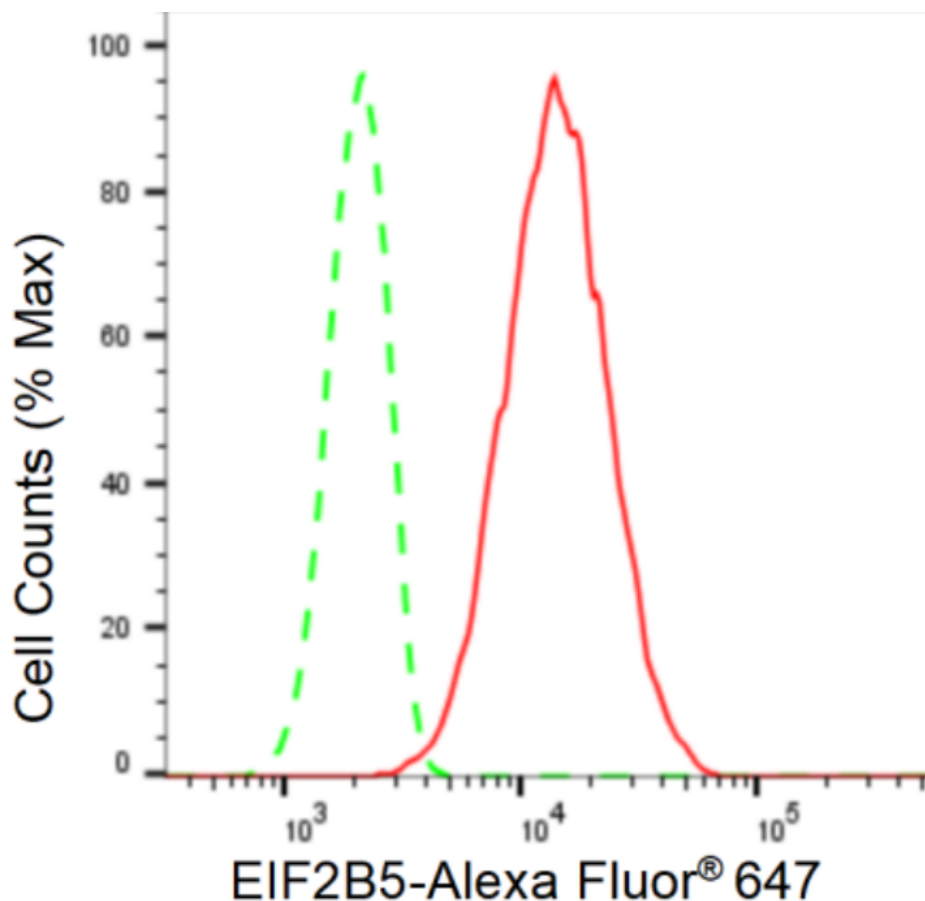
WWW.GENUINBIOTECH.COM

Anti-EIF2B5 Recombinant Rabbit Monoclonal Antibody

PAGE 2

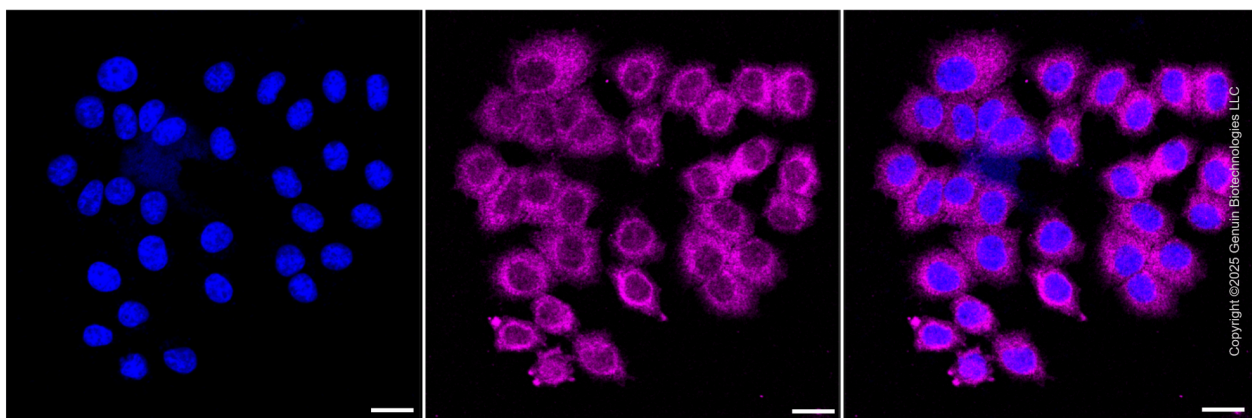
Note: This product is for research use only.

Validation Data



Copyright ©2024 Genuin Biotechnologies LLC

Flow cytometric analysis of EIF2B5 expression in HepG2 cells using EIF2B5 antibody (Cat#1957, 1:2,000). Green, isotype control; red, EIF2B5.



Copyright ©2025 Genuin Biotechnologies LLC

SUPPORT

SUPPORT@GENUINBIOTECH.COM
TEL: +1-540-855-7041

ORDERS

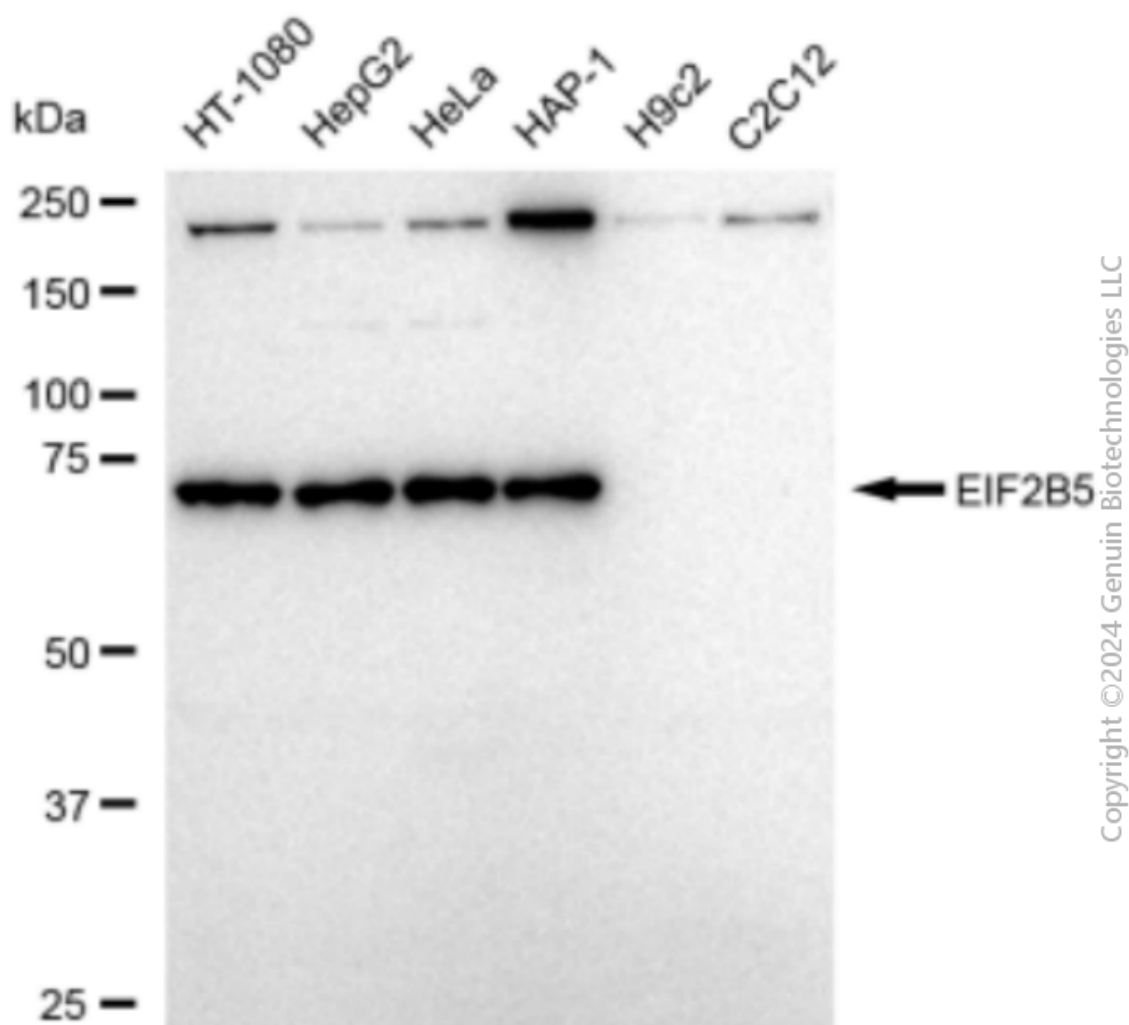
SALES@GENUINBIOTECH.COM
FAX: +1-540-855-7041

WWW.GENUINBIOTECH.COM

Anti-EIF2B5 Recombinant Rabbit Monoclonal Antibody

PAGE 3

gain: Medium. Scale bar, 20 μ m.



Western blotting analysis using anti-EIF2B5 antibody (Cat#1957). Total cell lysates (30 μ g) from various cell lines were loaded and separated by SDS-PAGE. The blot was incubated with anti-EIF2B5 antibody (Cat#1957, 1:5,000) and HRP-conjugated goat anti-rabbit secondary antibody (Cat#201, 1:20,000) respectively. Image was developed using FeQ™ ECL Substrate Kit (Cat#226).

SUPPORT

SUPPORT@GENUINBIOTECH.COM
TEL: +1-540-855-7041

ORDERS

SALES@GENUINBIOTECH.COM
FAX: +1-540-855-7041

WWW.GENUINBIOTECH.COM