

Anti-ELP3 Recombinant Rabbit Monoclonal Antibody



Catalog #: 1958

Aliases

ELP3; Elongator Acetyltransferase Complex Subunit 3; KAT9; TRNA Uridine(34) Acetyltransferase; Elongator Complex Protein 3; FLJ10422; Elongation Protein 3 Homolog (S. Cerevisiae); Protein Lysine Acetyltransferase ELP3; Elongation Protein 3 Homolog; EC 2.3.1.48; EC 2.3.1.-; HELP3

Background

Gene Name: ELP3

NCBI Gene Entry: [55140](#)

UniProt Entry: [Q9H9T3](#)

Application Information

Molecular Weight: Predicted, 62 kDa; observed, 58 kDa

Clonality: Rabbit monoclonal antibody

Clone ID: 23GB5305

Species Reactivity: Human, mouse, rat

Applications Tested: Western blotting (WB), flow cytometry (FCM), immunocytochemistry (IC)

Immunogen

A synthesized peptide derived from human KAT9 / Elp3

Isotype

Rabbit IgG

Storage Buffer

Supplied in PBS (pH 7.4) containing 50% glycerol, and 0.02% sodium azide.

Storage

Store at -20 °C for one year.

Recommended Dilutions

Western Blotting (WB): 1:1,000-1:5,000

Flow Cytometry (FCM): 1:2,000

Immunocytochemistry (IC): 1:100-1:1,000

SUPPORT

SUPPORT@GENUINBIOTECH.COM
TEL: +1-540-855-7041

ORDERS

SALES@GENUINBIOTECH.COM
FAX: +1-540-855-7041

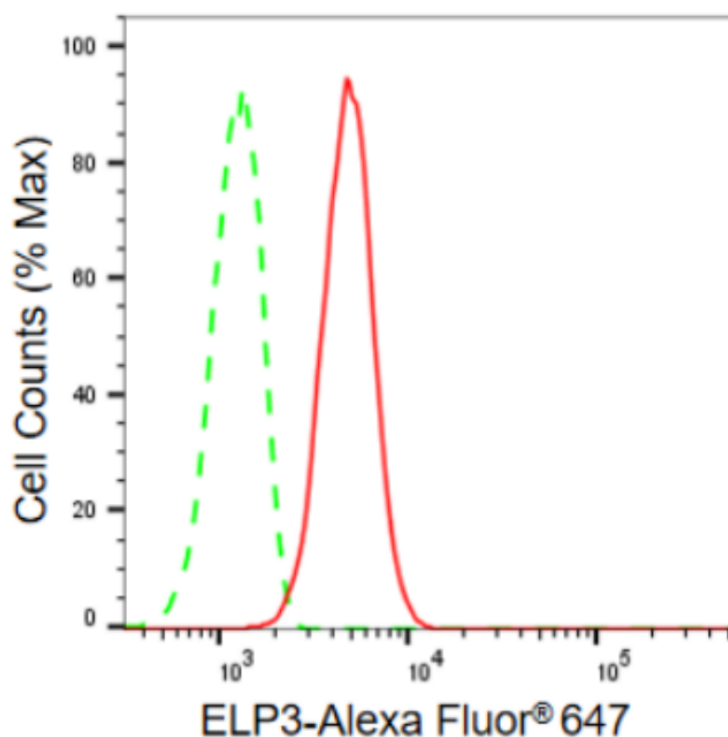
WWW.GENUINBIOTECH.COM

Anti-ELP3 Recombinant Rabbit Monoclonal Antibody

PAGE 2

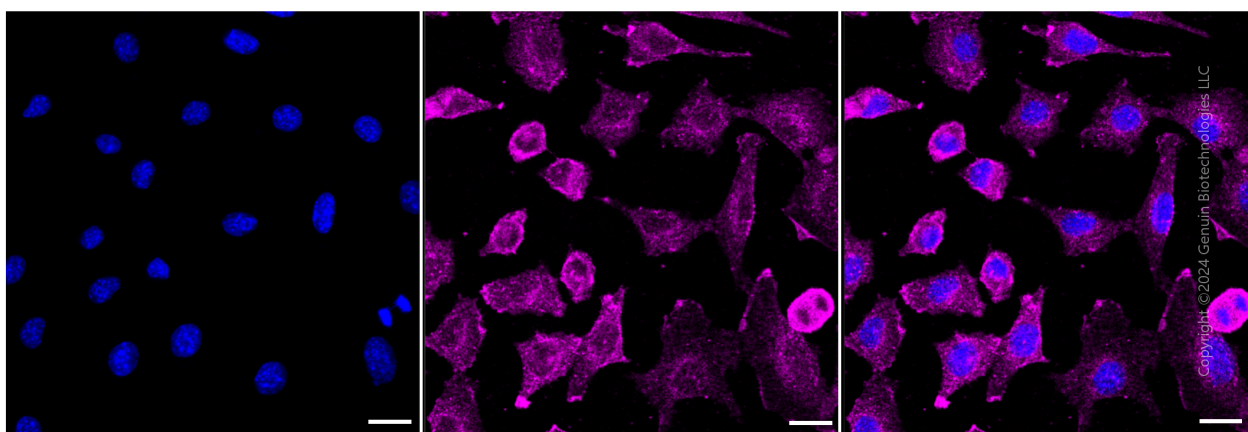
Note: This product is for research use only.

Validation Data



Copyright ©2024 Genuin Biotechnologies LLC

Flow cytometric analysis of ELP3 expression in C2C12 cells using ELP3 antibody (Cat#1958, 1:2,000). Green, isotype control; red, ELP3.



Copyright ©2024 Genuin Biotechnologies LLC

Immunocytochemical staining of C2C12 cells with anti-ELP3 antibody (Cat#1958, 1:1,000). Nuclei were stained blue with DAPI; ELP3 was stained magenta with Alexa Fluor® 647. Images were taken using Leica stellaris 5. Protein abundance based on laser Intensity and smart gain: Medium. Scale bar: 20 μ m.

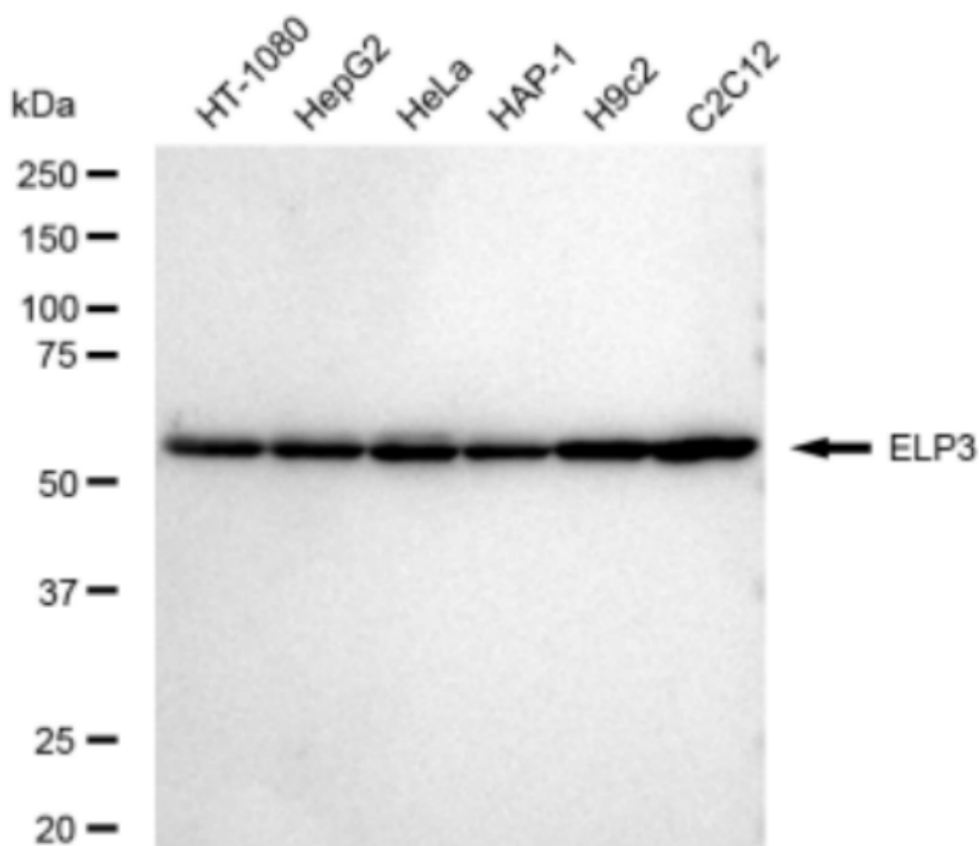
SUPPORT

SUPPORT@GENUINBIOTECH.COM
TEL: +1-540-855-7041

ORDERS

SALES@GENUINBIOTECH.COM
FAX: +1-540-855-7041

WWW.GENUINBIOTECH.COM



Copyright ©2024 Genuin Biotechnologies LLC

Western blotting analysis using anti-ELP3 antibody (Cat#1958). Total cell lysates (30 μ g) from various cell lines were loaded and separated by SDS-PAGE. The blot was incubated with anti-ELP3 antibody (Cat#1958, 1:5,000) and HRP-conjugated goat anti-rabbit secondary antibody (Cat#201, 1:20,000) respectively. Image was developed using FeQ™ ECL Substrate Kit (Cat#226).