

Catalog #: 1964

Aliases

ENTPD5; Ectonucleoside Triphosphate Diphosphohydrolase 5 (Inactive); CD39L4; PCPH; Ectonucleoside Triphosphate Diphosphohydrolase 5; Nucleoside Diphosphate Phosphatase ENTPD5; Inosine Diphosphate Phosphatase ENTPD5; Guanosine-Diphosphatase ENTPD5; Uridine-Diphosphatase ENTPD5; Nucleoside Diphosphatase; CD39 Antigen-Like 4; Proto-Oncogene CPH; GDPase ENTPD5; UDPase ENTPD5; EC 3.6.1.6; NTPDase-5; ER-UDPase; NTPDase 5; PcpH Proto-Oncogene Protein; CD39-Like 4; NTPDASE-5; EC 3.6.1

Background

Gene Name: ENTPD5

NCBI Gene Entry: [957](#)

UniProt Entry: [O75356](#)

Application Information

Molecular Weight: Predicted, 48 kDa; observed, 47 kDa

Clonality: Rabbit monoclonal antibody

Clone ID: 23GB5330

Species Reactivity: Human, mouse, rat

Applications Tested: Western blotting (WB), immunocytochemistry (IC)

Immunogen

A synthesized peptide derived from human ENTPD5

Isotype

Rabbit IgG

Storage Buffer

Supplied in PBS (pH 7.4) containing 50% glycerol, and 0.02% sodium azide.

Storage

Store at -20 °C for one year.

Recommended Dilutions

Western Blotting (WB): 1:1,000-1:5,000

Immunocytochemistry (IC): 1:100-1:1,000

SUPPORT

SUPPORT@GENUINBIOTECH.COM
TEL: +1-540-855-7041

ORDERS

SALES@GENUINBIOTECH.COM
FAX: +1-540-855-7041

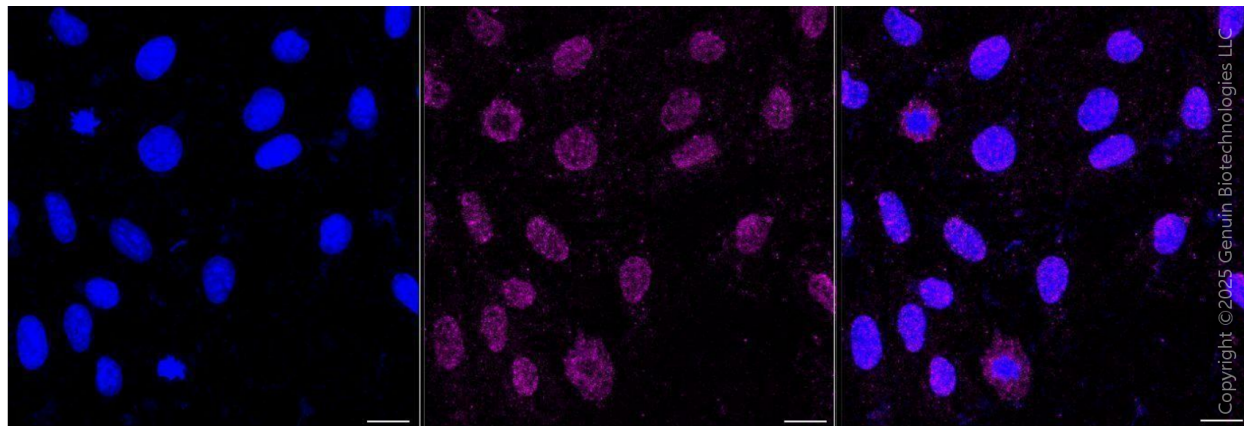
WWW.GENUINBIOTECH.COM

Anti-ENTPD5 Recombinant Rabbit Monoclonal Antibody

PAGE 2

Note: This product is for research use only.

Validation Data



Immunocytochemical staining of H9c2 cells with anti-ENTPD5 antibody (Cat#1964, 1:1,000) . Nuclei were stained blue with DAPI; ENTDP5 was stained magenta with Alexa Fluor® 647. Images were taken using Leica stellaris 5. Protein abundance based on laser Intensity and smart gain: Low. Scale bar, 20 μ m.

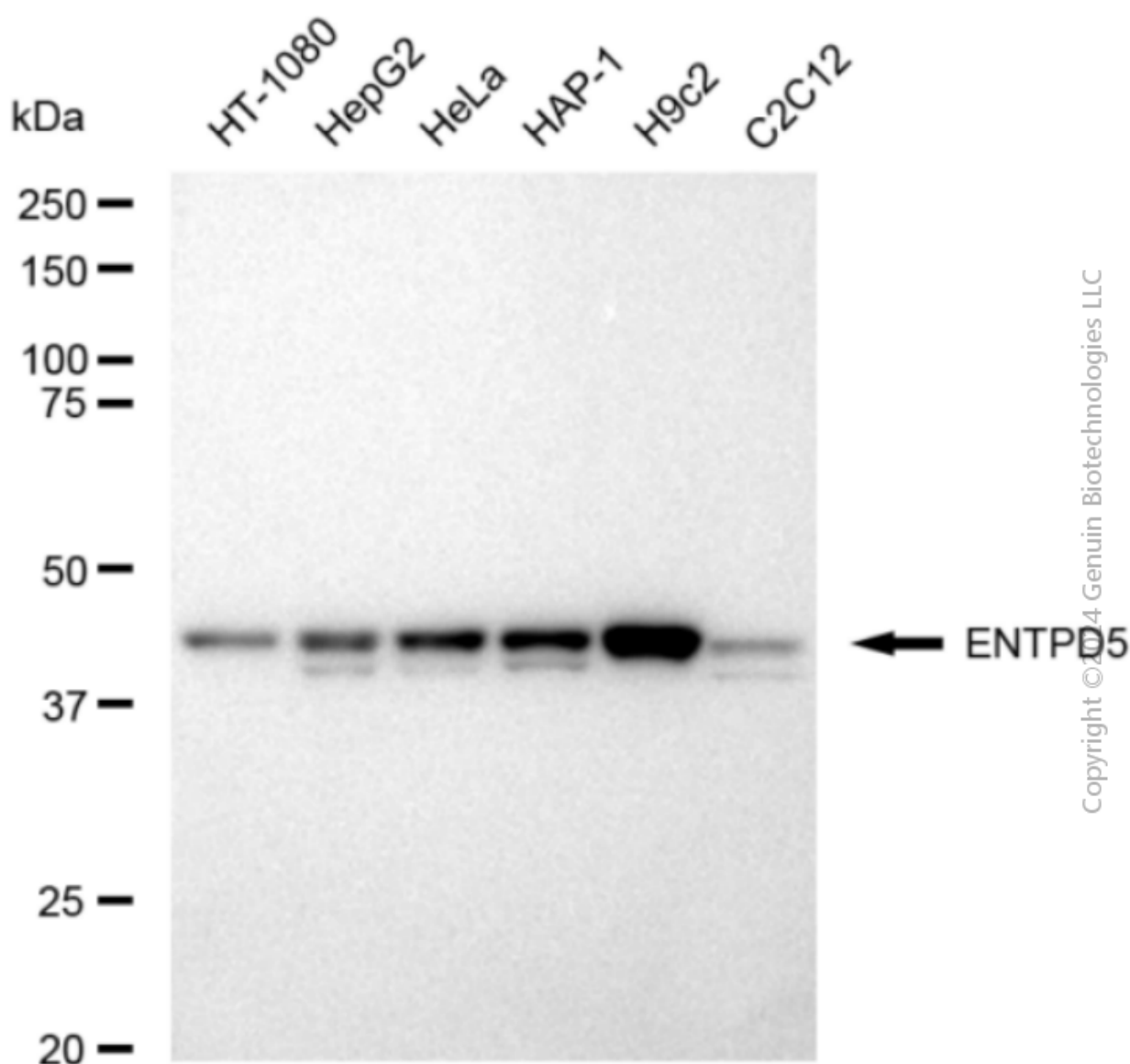
SUPPORT

SUPPORT@GENUINBIOTECH.COM
TEL: +1-540-855-7041

ORDERS

SALES@GENUINBIOTECH.COM
FAX: +1-540-855-7041

WWW.GENUINBIOTECH.COM



Western blotting analysis using anti-ENTPD5 antibody (Cat#1964). Total cell lysates (30 μ g) from various cell lines were loaded and separated by SDS-PAGE. The blot was incubated with anti-ENTPD5 antibody (Cat#1964, 1:5,000) and HRP-conjugated goat anti-rabbit secondary antibody (Cat#201, 1:20,000) respectively. Image was developed using FeQ™ ECL Substrate Kit (Cat#226).