

Anti-FANCA Recombinant Rabbit Monoclonal Antibody



Catalog #: 1972

Aliases

FANCA; FA Complementation Group A; FAA; FANCH; FA-H; FACA; FAH; Fanconi Anemia Complementation Group A; Fanconi Anemia Group A Protein; Fanconi Anemia, Complementation Group H; Fanconi Anemia, Type 1; Protein FACA; FA1; FA

Background

Gene Name: FANCA

NCBI Gene Entry: [2175](#)

UniProt Entry: [O15360](#)

Application Information

Molecular Weight: Predicted, 163 kDa; observed, 163 kDa

Clonality: Rabbit monoclonal antibody

Clone ID: 23GB5360

Species Reactivity: Human

Applications Tested: Western blotting (WB), immunocytochemistry (IC)

Immunogen

A synthesized peptide derived from human FANCA

Isotype

Rabbit IgG

Storage Buffer

Supplied in PBS (pH 7.4) containing 50% glycerol, and 0.02% sodium azide.

Storage

Store at -20 °C for one year.

Recommended Dilutions

Western Blotting (WB): 1:1,000-1:5,000

Immunocytochemistry (IC): 1:100-1:1,000

Note: This product is for research use only.

Validation Data

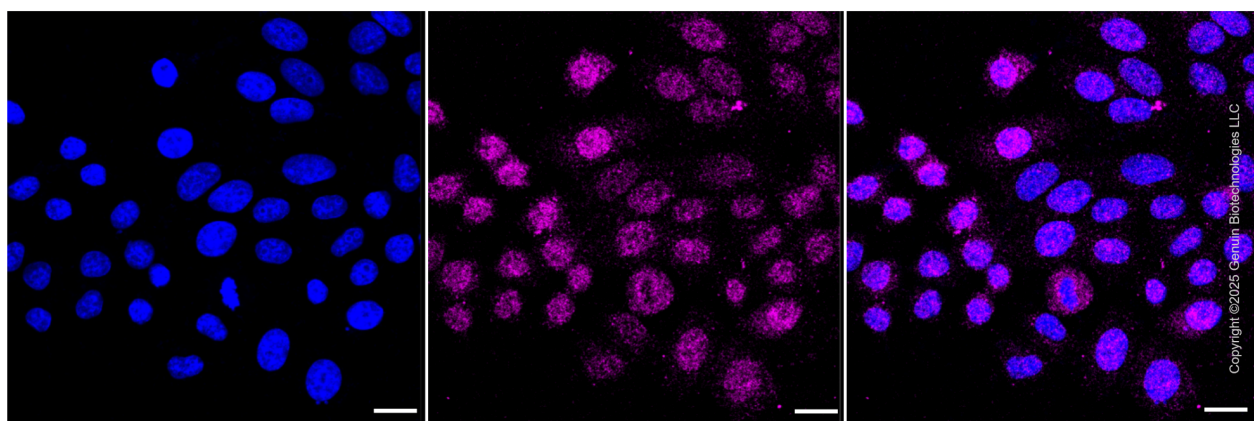
SUPPORT

SUPPORT@GENUINBIOTECH.COM
TEL: +1-540-855-7041

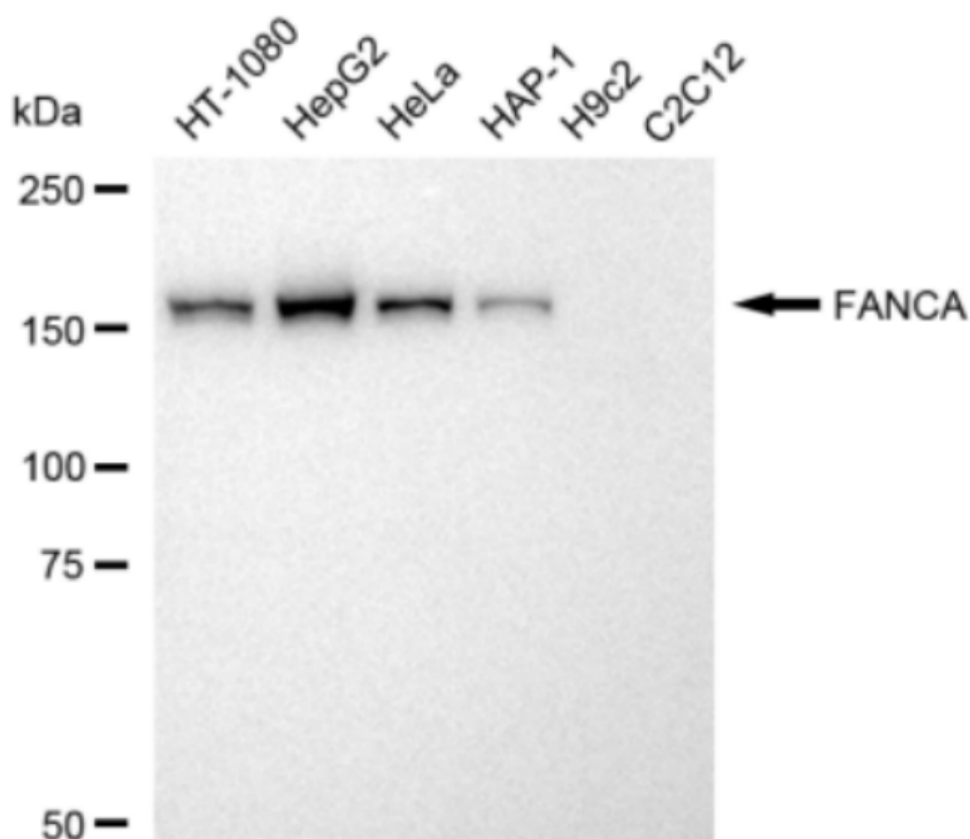
ORDERS

SALES@GENUINBIOTECH.COM
FAX: +1-540-855-7041

WWW.GENUINBIOTECH.COM



Immunocytochemical staining of HepG2 cells with anti-FANCA antibody (Cat#1972, 1:1000) . Nuclei were stained blue with DAPI; FANCA was stained magenta with Alexa Fluor® 647. Images were taken using Leica stellaris 5. Protein abundance based on laser Intensity and smart gain: Low. Scale bar, 20 µm.



Western blotting analysis using anti-FANCA antibody (Cat#1972). Total cell lysates (30 µg) from

SUPPORT

SUPPORT@GENUINBIOTECH.COM
TEL: +1-540-855-7041

ORDERS

SALES@GENUINBIOTECH.COM
FAX: +1-540-855-7041

WWW.GENUINBIOTECH.COM

Anti-FANCA Recombinant Rabbit Monoclonal Antibody

PAGE 3

various cell lines were loaded and separated by SDS-PAGE. The blot was incubated with anti-FANCA antibody (Cat#1972, 1:5,000) and HRP-conjugated goat anti-rabbit secondary antibody (Cat#201, 1:20,000) respectively. Image was developed using FeQ™ ECL Substrate Kit (Cat#226).

SUPPORT

SUPPORT@GENUINBIOTECH.COM
TEL: +1-540-855-7041

ORDERS

SALES@GENUINBIOTECH.COM
FAX: +1-540-855-7041

WWW.GENUINBIOTECH.COM