

Anti-FANCD2 Recombinant Rabbit Monoclonal Antibody



Catalog #: 1973

Aliases

FANCD2; FA Complementation Group D2; FA-D2; FACD; FAD; Fanconi Anemia Complementation Group D2; Fanconi Anemia Group D2 Protein; FANCD; Protein FACD2; FAD2; FA4

Background

Gene Name: FANCD2

NCBI Gene Entry: [2177](#)

UniProt Entry: [Q9BXW9](#)

Application Information

Molecular Weight: Predicted, 166 kDa; observed, 166 kDa

Clonality: Rabbit monoclonal antibody

Clone ID: 23GB5365

Species Reactivity: Human, mouse, rat

Applications Tested: Western blotting (WB), immunocytochemistry (IC), flow cytometry (FCM)

Immunogen

A synthesized peptide derived from human FANCD2

Isotype

Rabbit IgG

Storage Buffer

Supplied in PBS (pH 7.4) containing 50% glycerol, and 0.02% sodium azide.

Storage

Store at -20 °C for one year.

Recommended Dilutions

Western Blotting (WB): 1:1,000-1:5,000

Immunocytochemistry (IC): 1:100-1:1,000

Flow Cytometry (FCM): 1:2,000

Note: This product is for research use only.

SUPPORT

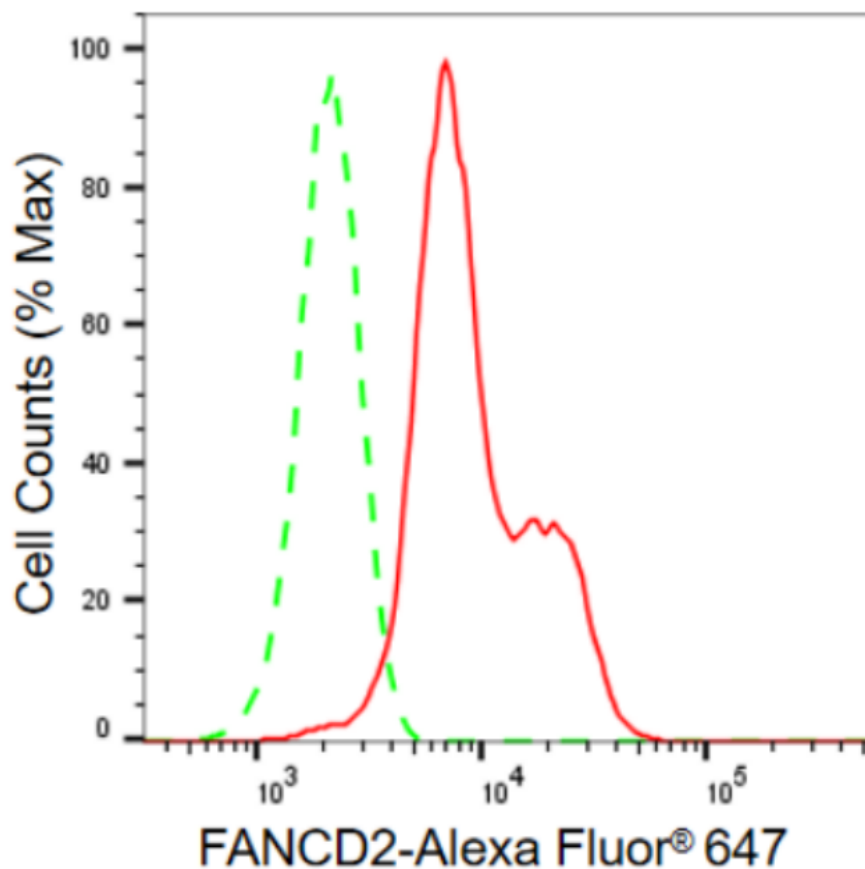
SUPPORT@GENUINBIOTECH.COM
TEL: +1-540-855-7041

ORDERS

SALES@GENUINBIOTECH.COM
FAX: +1-540-855-7041

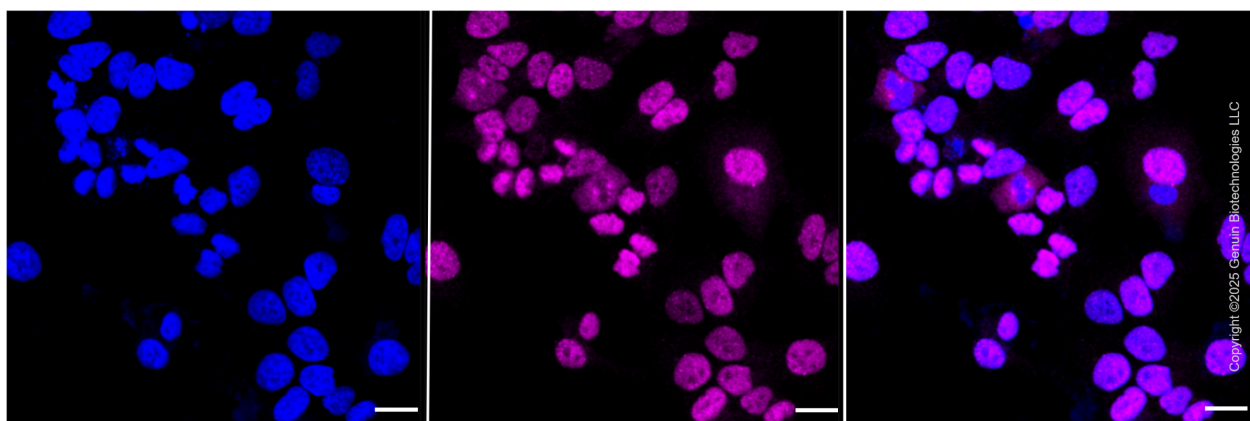
WWW.GENUINBIOTECH.COM

Validation Data



Copyright ©2024 Genuin Biotechnologies LLC

Flow cytometric analysis of FANCD2 expression in HeLa cells using FANCD2 antibody (Cat#1973, 1:2,000). Green, isotype control; red, FANCD2.



Copyright ©2025 Genuin Biotechnologies LLC

Immunocytochemical staining of HeLa cells with anti-FANCD2 antibody (Cat#1973, 1:1,000). Nuclei were stained blue with DAPI; FANCD2 was stained magenta with Alexa Fluor® 647. Images were taken using Leica stellaris 5. Protein abundance based on laser Intensity and smart

SUPPORT

SUPPORT@GENUINBIOTECH.COM
TEL: +1-540-855-7041

ORDERS

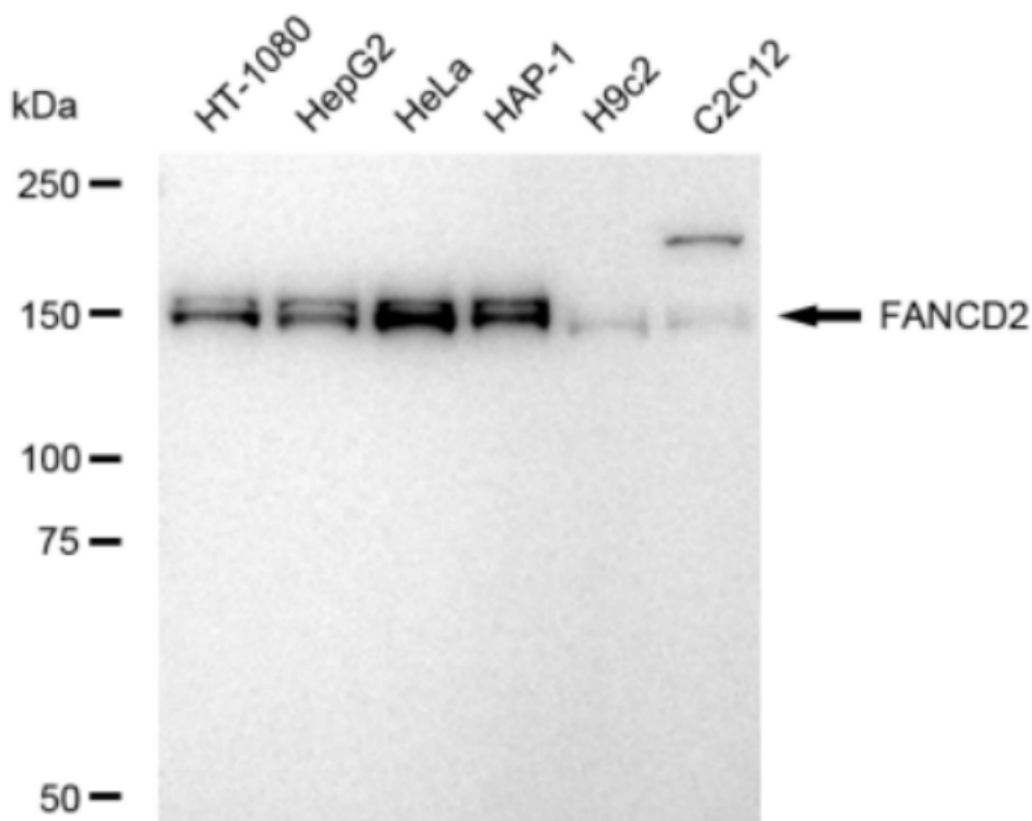
SALES@GENUINBIOTECH.COM
FAX: +1-540-855-7041

WWW.GENUINBIOTECH.COM

Anti-FANCD2 Recombinant Rabbit Monoclonal Antibody

PAGE 3

gain: Medium. Scale bar, 20 μ m.



Copyright © 2024 Genuin Biotechnologies LLC

Western blotting analysis using anti-FANCD2 antibody (Cat#1973). Total cell lysates (30 μ g) from various cell lines were loaded and separated by SDS-PAGE. The blot was incubated with anti-FANCD2 antibody (Cat#1973, 1:5,000) and HRP-conjugated goat anti-rabbit secondary antibody (Cat#201, 1:20,000) respectively. Image was developed using FeQ™ ECL Substrate Kit (Cat#226).

SUPPORT

SUPPORT@GENUINBIOTECH.COM
TEL: +1-540-855-7041

ORDERS

SALES@GENUINBIOTECH.COM
FAX: +1-540-855-7041

WWW.GENUINBIOTECH.COM