

Anti-FIS1 Recombinant Rabbit Monoclonal Antibody



Catalog #: 1984

Aliases

FIS1; Fission, Mitochondrial 1; H_NH0132A01.6; CGI-135; TTC11; Tetratricopeptide Repeat Protein 11; Tetratricopeptide Repeat Domain 11; Mitochondrial Fission 1 Protein; Mitochondrial Fission Molecule; TPR Repeat Protein 11; FIS1 Homolog; HFis1; Fission 1 (Mitochondrial Outer Membrane) Homolog (S. Cerevisiae); Fission 1 (Mitochondrial Outer Membrane) Homolog (Yeast); Fission 1 (Mitochondrial Outer Membrane) Homolog; CGI-135 Protein

Background

Gene Name: FIS1

NCBI Gene Entry: [51024](#)

UniProt Entry: [Q9Y3D6](#)

Application Information

Molecular Weight: Predicted, 17 kDa; observed, 15 kDa

Clonality: Rabbit monoclonal antibody

Clone ID: 23GB5420

Species Reactivity: Human

Applications Tested: Western blotting (WB), flow cytometry (FCM), immunocytochemistry (IC)

Immunogen

A synthesized peptide derived from human TTC11

Isotype

Rabbit IgG

Storage Buffer

Supplied in PBS (pH 7.4) containing 50% glycerol, and 0.02% sodium azide.

Storage

Store at -20 °C for one year.

Recommended Dilutions

Western Blotting (WB): 1:1,000-1:5,000

Flow Cytometry (FCM): 1:2,000

Immunocytochemistry (IC): 1:100-1:1,000

SUPPORT

SUPPORT@GENUINBIOTECH.COM
TEL: +1-540-855-7041

ORDERS

SALES@GENUINBIOTECH.COM
FAX: +1-540-855-7041

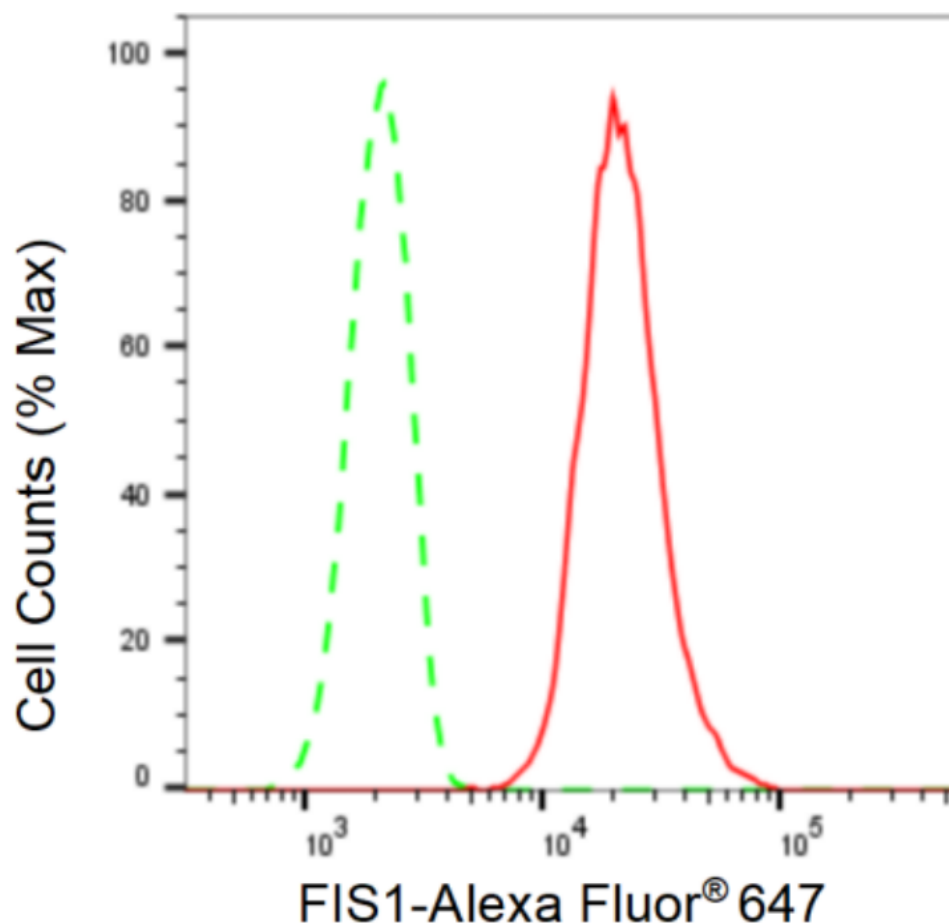
WWW.GENUINBIOTECH.COM

Anti-FIS1 Recombinant Rabbit Monoclonal Antibody

PAGE 2

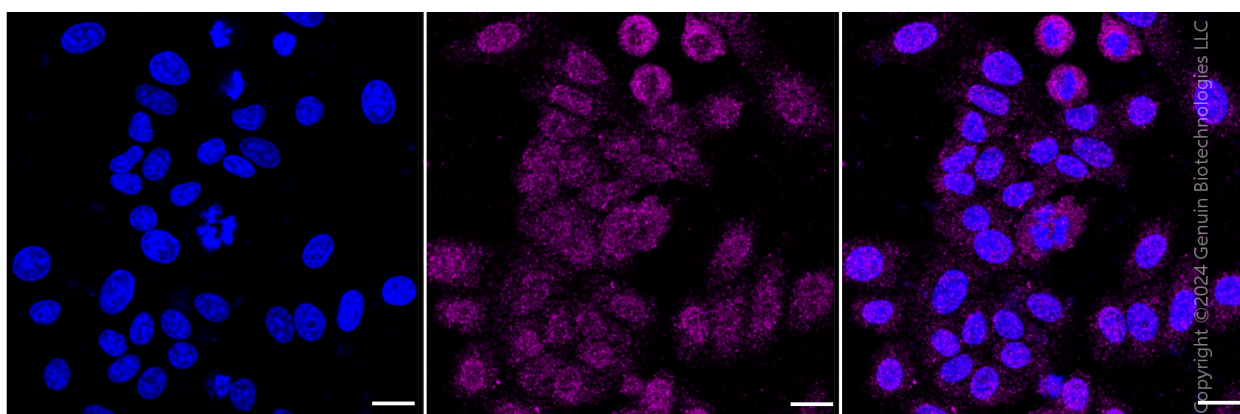
Note: This product is for research use only.

Validation Data



Copyright ©2024 Genuin Biotechnologies LLC

Flow cytometric analysis of FIS1 expression in HepG2 cells using FIS1 antibody (Cat#1984, 1:2,000). Green, isotype control; red, FIS1.



Copyright ©2024 Genuin Biotechnologies LLC

SUPPORT

SUPPORT@GENUINBIOTECH.COM
TEL: +1-540-855-7041

ORDERS

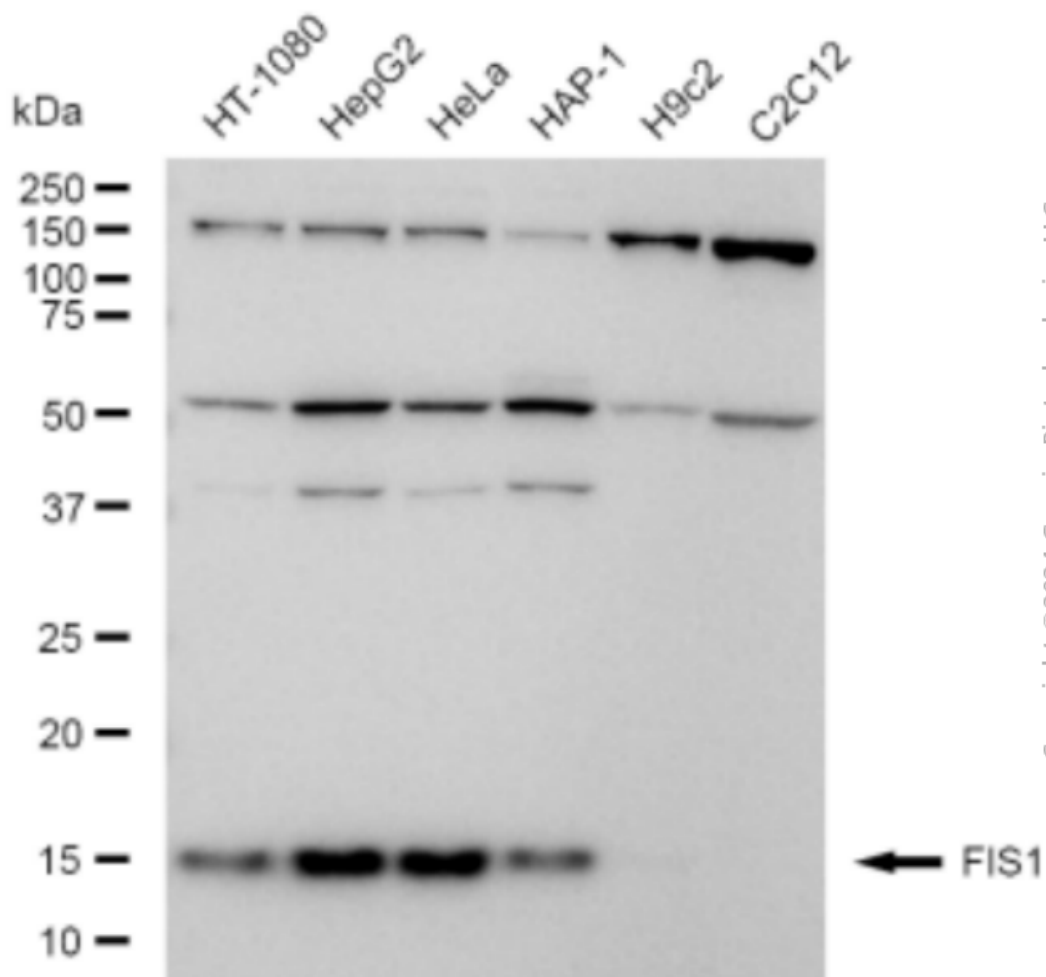
SALES@GENUINBIOTECH.COM
FAX: +1-540-855-7041

WWW.GENUINBIOTECH.COM

Anti-FIS1 Recombinant Rabbit Monoclonal Antibody

PAGE 3

Medium. Scale bar: 20 μ m.



Western blotting analysis using anti-FIS1 antibody (Cat#1984). Total cell lysates (30 μ g) from various cell lines were loaded and separated by SDS-PAGE. The blot was incubated with anti-FIS1 antibody (Cat#1984, 1:5,000) and HRP-conjugated goat anti-rabbit secondary antibody (Cat#201, 1:20,000) respectively. Image was developed using FeQ™ ECL Substrate Kit (Cat#226).

SUPPORT

SUPPORT@GENUINBIOTECH.COM
TEL: +1-540-855-7041

ORDERS

SALES@GENUINBIOTECH.COM
FAX: +1-540-855-7041

WWW.GENUINBIOTECH.COM