

Anti-FKBP1A Recombinant Rabbit Monoclonal Antibody



Catalog #: 1985

Aliases

FKBP1A; FKBP Prolyl Isomerase 1A; FKBP-12; FKBP12; PPIASE; PKC12; FKBP1; Peptidyl-Prolyl Cis-Trans Isomerase FKBP1A; FK506 Binding Protein 1A, 12kDa; 12 KDa FK506-Binding Protein; FK506-Binding Protein 1A; Immunophilin FKBP12; PPIase FKBP1A; 12 KDa FKBP; Calstabin-1; EC 5.2.1.8; Rotamase; FKBP12C; FKBP-1A; FK506-Binding Protein, T-Cell, 12-KD; FK506-Binding Protein 1A (12kD); Protein Kinase C Inhibitor; FK506 Binding Protein 1A; FK506-Binding Protein 12; FK506 Binding Protein12; FK506-Binding Protein 1; FKBP12-Exip3; Calstabin 1; PKCI2

Background

Gene Name: FKBP1A

NCBI Gene Entry: [2280](#)

UniProt Entry: [P62942](#)

Application Information

Molecular Weight: Predicted, 12 kDa; observed, 12 kDa

Clonality: Rabbit monoclonal antibody

Clone ID: 23GB5425

Species Reactivity: Human, mouse, rat

Applications Tested: Western blotting (WB), flow cytometry (FCM), immunocytochemistry (IC)

Immunogen

A synthesized peptide derived from human FKBP12

Isotype

Rabbit IgG

Storage Buffer

Supplied in PBS (pH 7.4) containing 50% glycerol, and 0.02% sodium azide.

Storage

Store at -20 °C for one year.

Recommended Dilutions

Western Blotting (WB): 1:1,000-1:5,000

Flow Cytometry (FCM): 1:2,000

SUPPORT

SUPPORT@GENUINBIOTECH.COM
TEL: +1-540-855-7041

ORDERS

SALES@GENUINBIOTECH.COM
FAX: +1-540-855-7041

WWW.GENUINBIOTECH.COM

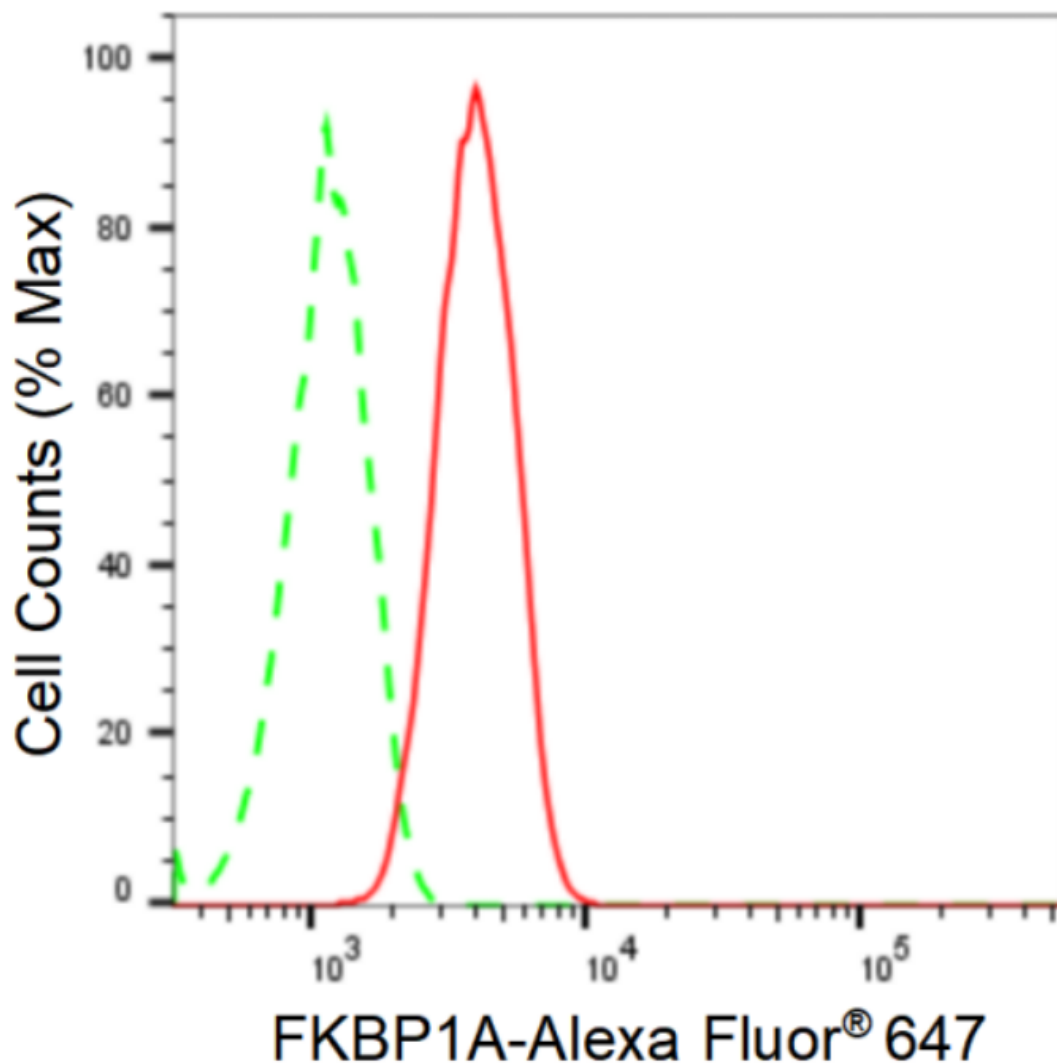
Anti-FKBP1A Recombinant Rabbit Monoclonal Antibody

PAGE 2

Immunocytochemistry (IC): 1:100-1:1,000

Note: This product is for research use only.

Validation Data



Copyright ©2024 Genuin Biotechnologies LLC

Flow cytometric analysis of FKBP1A expression in HT-1080 cells using anti-FKBP1A antibody (Cat#1985, 1:2,000). Green, isotype control; red, FKBP1A.

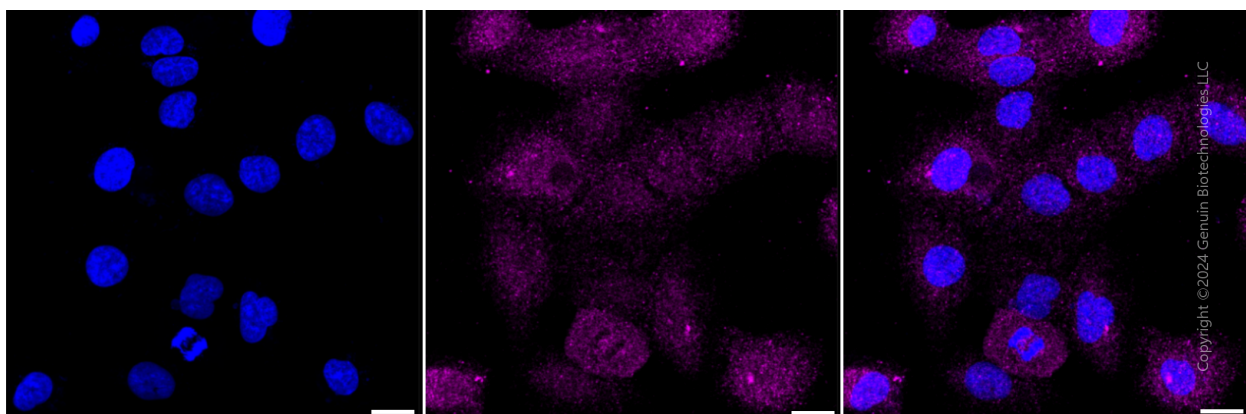
SUPPORT

SUPPORT@GENUINBIOTECH.COM
TEL: +1-540-855-7041

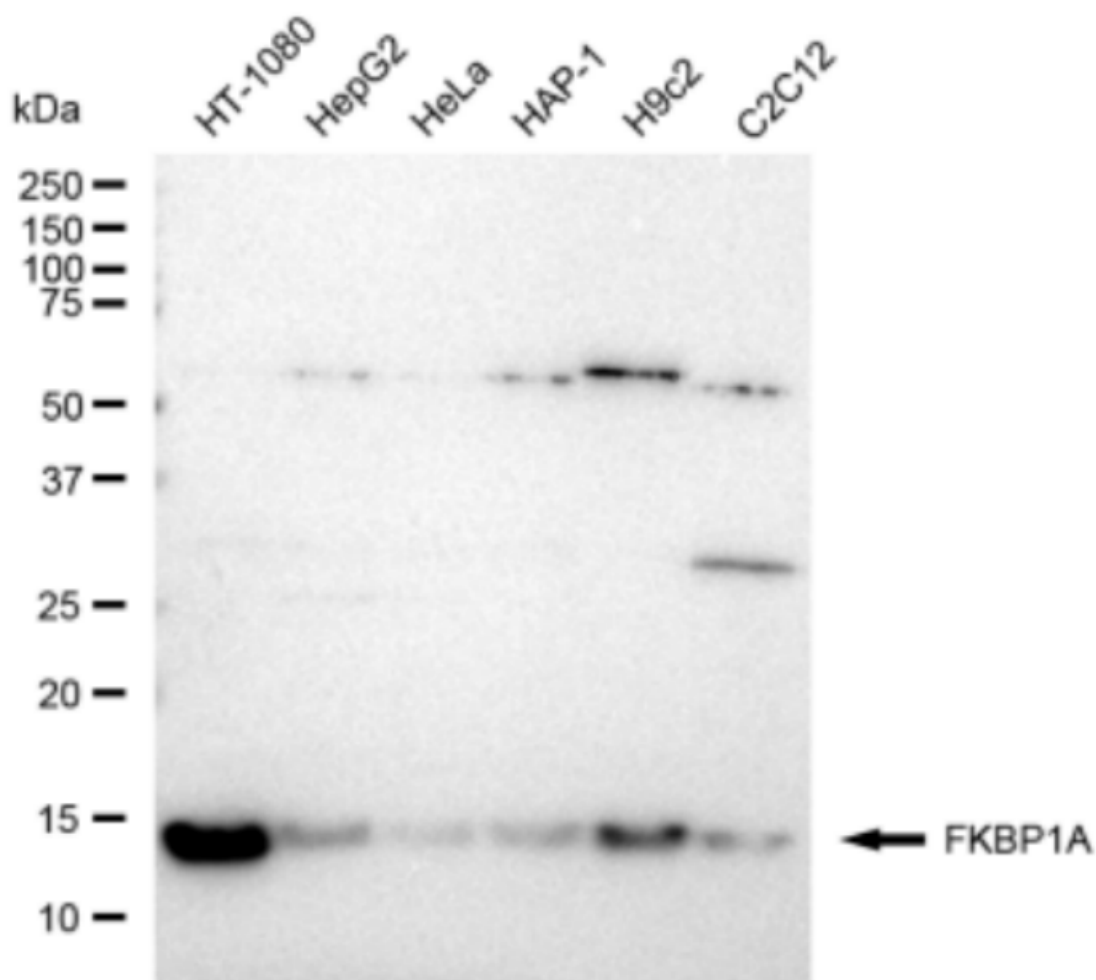
ORDERS

SALES@GENUINBIOTECH.COM
FAX: +1-540-855-7041

WWW.GENUINBIOTECH.COM



Immunocytochemical staining of HT-1080 cells with anti-FKBP1A antibody (Cat#1985, 1:1,000). Nuclei were stained blue with DAPI; FKBP1A was stained magenta with Alexa Fluor® 647. Images were taken using Leica stellaris 5. Protein abundance based on laser Intensity and smart gain: Medium. Scale bar: 20 μ m.



Anti-FKBP1A Recombinant Rabbit Monoclonal Antibody

PAGE 4

Western blotting analysis using anti-FKBP1A antibody (Cat#1985). Total cell lysates (30 µg) from various cell lines were loaded and separated by SDS-PAGE. The blot was incubated with anti-FKBP1A antibody (Cat#1985, 1:5,000) and HRP-conjugated goat anti-rabbit secondary antibody (Cat#201, 1:20,000) respectively. Image was developed using FeQ™ ECL Substrate Kit (Cat#226).

SUPPORT

SUPPORT@GENUINBIOTECH.COM
TEL: +1-540-855-7041

ORDERS

SALES@GENUINBIOTECH.COM
FAX: +1-540-855-7041

WWW.GENUINBIOTECH.COM