

Anti-FOXO1A Recombinant Rabbit Monoclonal Antibody



Catalog #: 1990

Aliases

FOXO1; Forkhead Box O1; FOXO1A; FKH1; FKHR; Forkhead Box Protein O1A; Forkhead Box Protein O1; Forkhead, Drosophila, Homolog Of, In Rhabdomyosarcoma; Forkhead Homolog In Rhabdomyosarcoma; Forkhead In Rhabdomyosarcoma

Background

Gene Name: FOXO1

NCBI Gene Entry: [2308](#)

UniProt Entry: [Q12778](#)

Application Information

Molecular Weight: Predicted, 70 kDa; observed, 78,82 kDa

Clonality: Rabbit monoclonal antibody

Clone ID: 23GB5450

Species Reactivity: Human, mouse, rat

Applications Tested: Western blotting (WB), immunocytochemistry (IC), flow cytometry (FCM)

Immunogen

A synthesized peptide derived from human FoxO1a

Isotype

Rabbit IgG

Storage Buffer

Supplied in PBS (pH 7.4) containing 50% glycerol, and 0.02% sodium azide.

Storage

Store at -20 °C for one year.

Recommended Dilutions

Western Blotting (WB): 1:1,000-1:5,000

Immunocytochemistry (IC): 1:100-1:1,000

Flow Cytometry (FCM): 1:2,000

Note: This product is for research use only.

SUPPORT

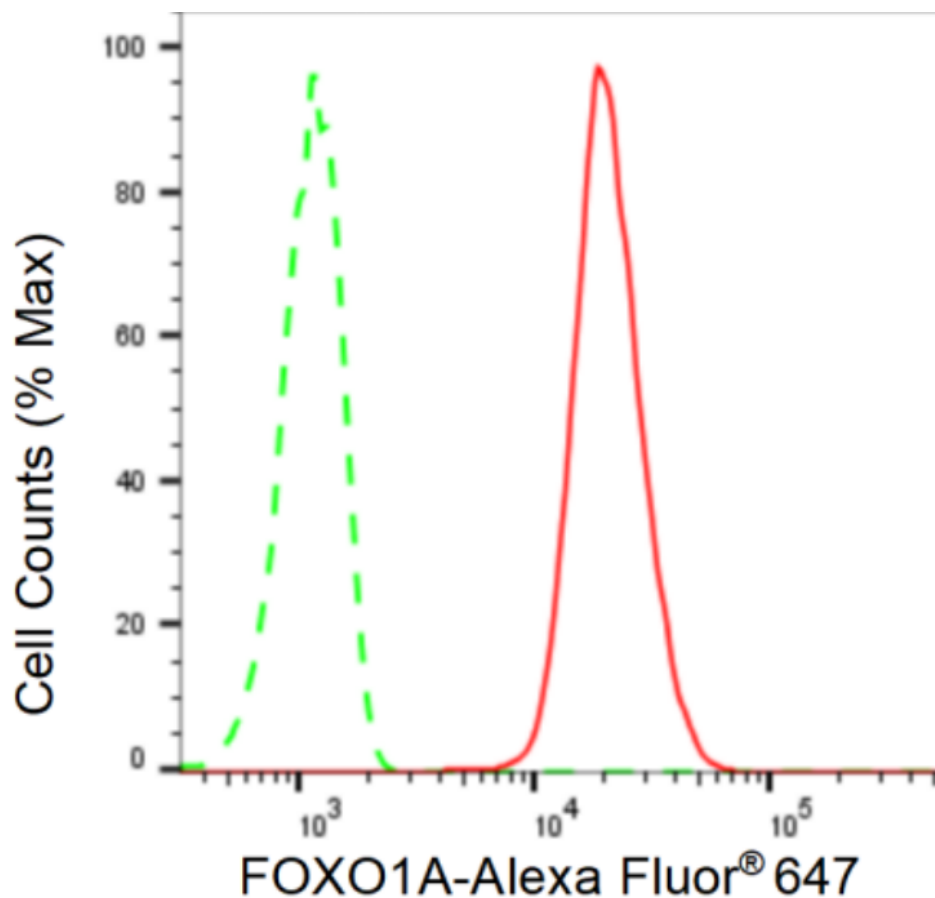
SUPPORT@GENUINBIOTECH.COM
TEL: +1-540-855-7041

ORDERS

SALES@GENUINBIOTECH.COM
FAX: +1-540-855-7041

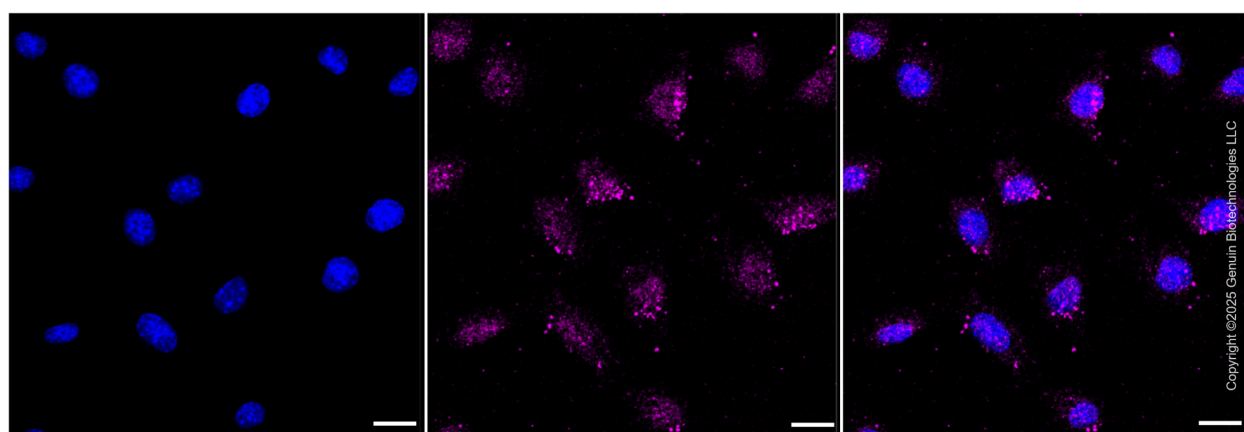
WWW.GENUINBIOTECH.COM

Validation Data



Copyright ©2024 Genuin Biotechnologies LLC

Flow cytometric analysis of FOXO1A expression in C2C12 cells using FOXO1A antibody (Cat#1990, 1:2,000). Green, isotype control; red, FOXO1A.



Copyright ©2025 Genuin Biotechnologies LLC

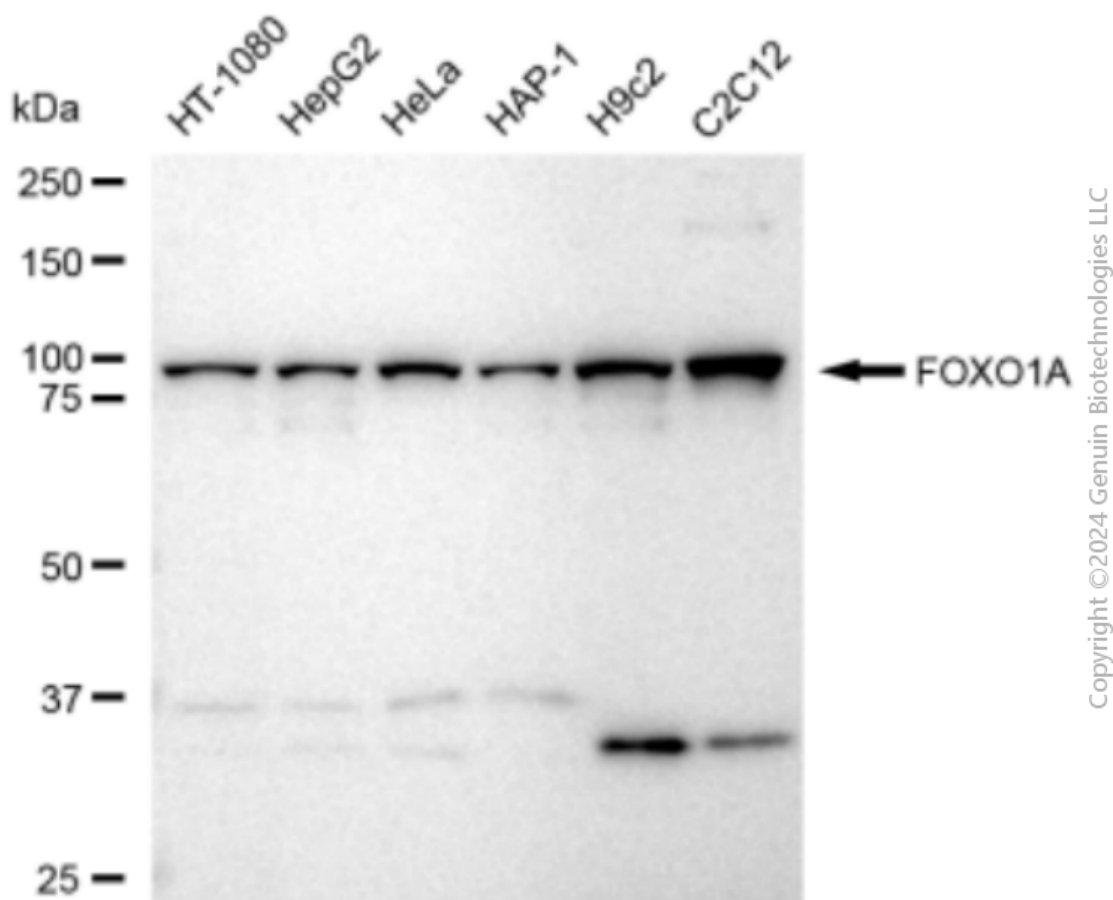
SUPPORT

SUPPORT@GENUINBIOTECH.COM
TEL: +1-540-855-7041

ORDERS

SALES@GENUINBIOTECH.COM
FAX: +1-540-855-7041

WWW.GENUINBIOTECH.COM



Western blotting analysis using anti-FOXO1A antibody (Cat#1990). Total cell lysates (30 μ g) from various cell lines were loaded and separated by SDS-PAGE. The blot was incubated with anti-FOXO1A antibody (Cat#1990, 1:5,000) and HRP-conjugated goat anti-rabbit secondary antibody (Cat#201, 1:20,000) respectively. Image was developed using FeQ™ ECL Substrate Kit (Cat#226).