

Anti-Frizzled class receptor 8 Recombinant Rabbit Monoclonal Antibody



Catalog #: 1994

Aliases

FZD8; Frizzled Class Receptor 8; Frizzled 8, Seven Transmembrane Spanning Receptor; Frizzled Family Receptor 8; Frizzled-8; Frizzled (Drosophila) Homolog 8; Frizzled Homolog 8 (Drosophila); Frizzled Homolog 8; FZ-8; HFZ8; Fz-8; HFz8

Background

Gene Name: FZD8

NCBI Gene Entry: [8325](#)

UniProt Entry: [Q9H461](#)

Application Information

Molecular Weight: Predicted, 73 kDa; observed, 73 kDa

Clonality: Rabbit monoclonal antibody

Clone ID: 23GB5470

Species Reactivity: Human

Applications Tested: Western blotting (WB), immunocytochemistry (IC), flow cytometry (FCM)

Immunogen

A synthesized peptide derived from human Frizzled 8

Isotype

Rabbit IgG

Storage Buffer

Supplied in PBS (pH 7.4) containing 50% glycerol, and 0.02% sodium azide.

Storage

Store at -20 °C for one year.

Recommended Dilutions

Western Blotting (WB): 1:1,000-1:5,000

Immunocytochemistry (IC): 1:100-1:1,000

Flow Cytometry (FCM): 1:2,000

Note: This product is for research use only.

SUPPORT

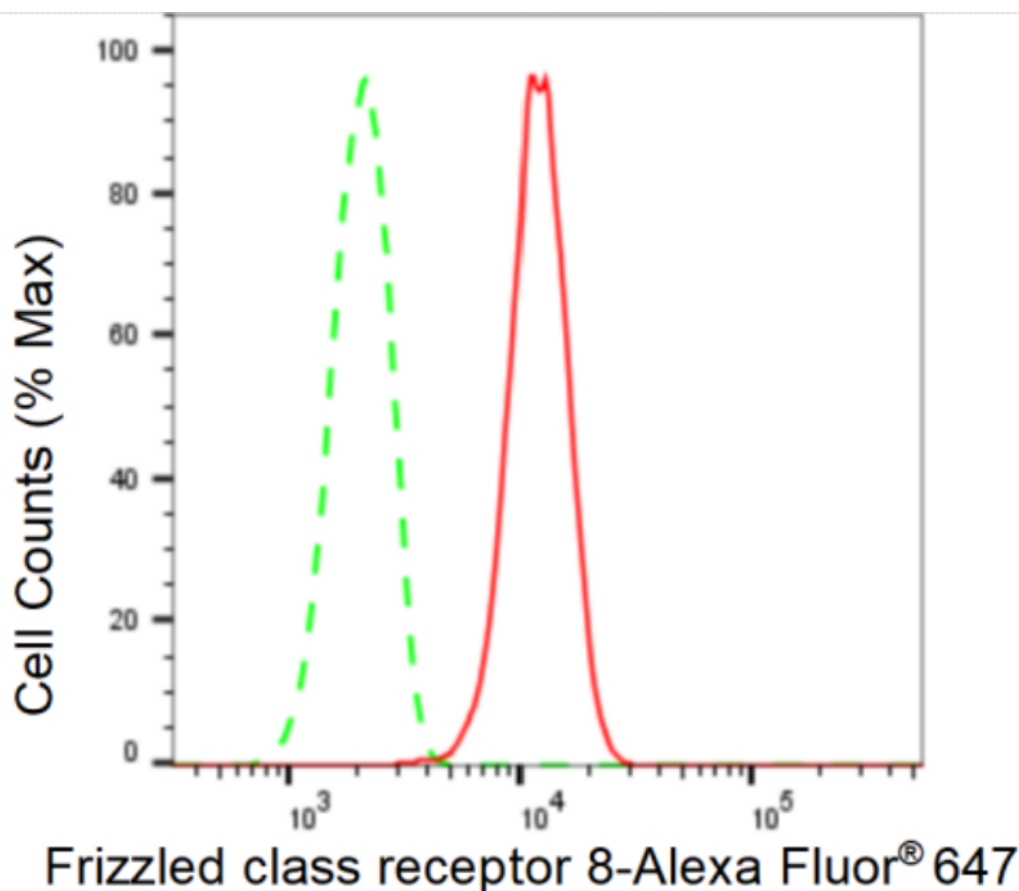
SUPPORT@GENUINBIOTECH.COM
TEL: +1-540-855-7041

ORDERS

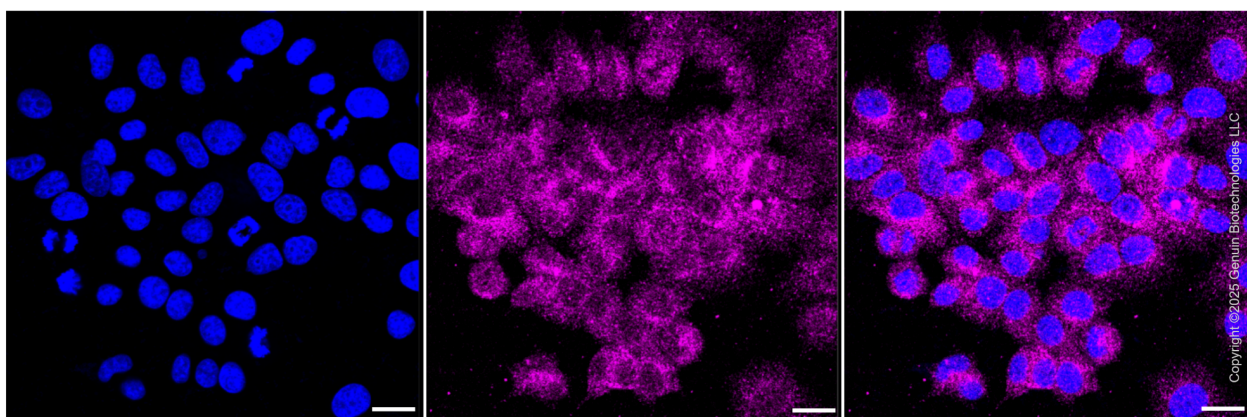
SALES@GENUINBIOTECH.COM
FAX: +1-540-855-7041

WWW.GENUINBIOTECH.COM

Validation Data



Flow cytometric analysis of Frizzled class receptor 8 expression in HepG2 cells using Frizzled class receptor 8 antibody (Cat#1994, 1:2,000). Green, isotype control; red, Frizzled class receptor 8.



Immunocytochemical staining of HepG2 cells with anti-Frizzled class receptor 8 antibody (Cat#1994, 1:1000). Nuclei were stained blue with DAPI; Frizzled class receptor 8 was stained magenta with Alexa Fluor® 647. Images were taken using Leica stellaris 5. Protein abundance

SUPPORT

SUPPORT@GENUINBIOTECH.COM
TEL: +1-540-855-7041

ORDERS

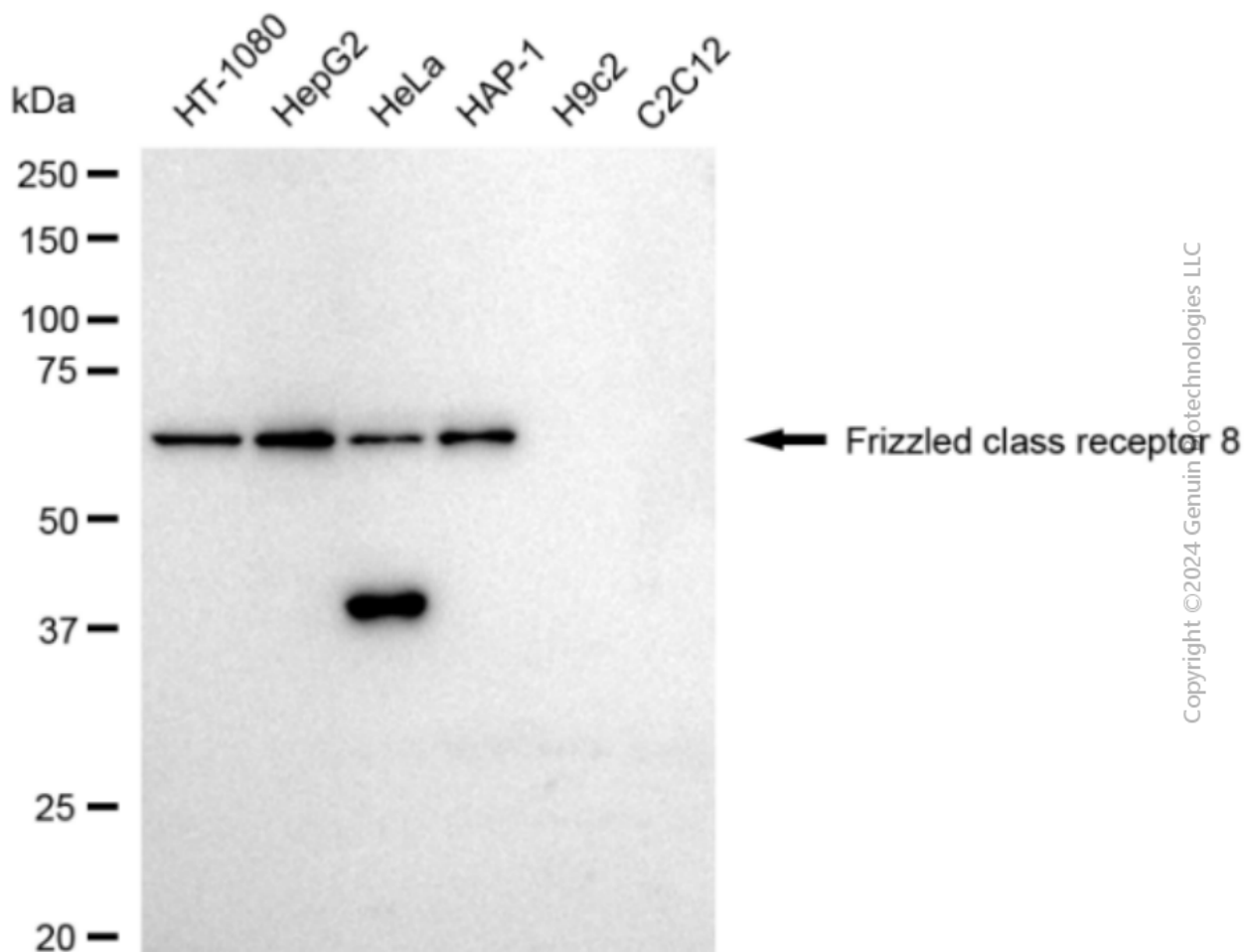
SALES@GENUINBIOTECH.COM
FAX: +1-540-855-7041

WWW.GENUINBIOTECH.COM

Anti-Frizzled class receptor 8 Recombinant Rabbit Monoclonal Antibody

PAGE 3

based on laser Intensity and smart gain: Medium. Scale bar, 20 μ m.



Western blotting analysis using anti-Frizzled class receptor 8 antibody (Cat#1994). Total cell lysates (30 μ g) from various cell lines were loaded and separated by SDS-PAGE. The blot was incubated with anti-Frizzled class receptor 8 antibody (Cat#1994, 1:5,000) and HRP-conjugated goat anti-rabbit secondary antibody (Cat#201, 1:20,000) respectively. Image was developed using FeQ™ ECL Substrate Kit (Cat#226).

SUPPORT

SUPPORT@GENUINBIOTECH.COM
TEL: +1-540-855-7041

ORDERS

SALES@GENUINBIOTECH.COM
FAX: +1-540-855-7041

WWW.GENUINBIOTECH.COM