

Anti-Alpha glucosidase Recombinant Rabbit Monoclonal Antibody



Catalog #: 1996

Aliases

GAA; Alpha Glucosidase; Lysosomal Alpha-Glucosidase; Glucosidase Alpha, Acid; Aglucosidase Alfa; Acid Maltase; EC 3.2.1.20; Glycogen Storage Disease Type II; Glucosidase, Alpha; Acid; Pompe Disease; LYAG

Background

Gene Name: GAA

NCBI Gene Entry: [2548](#)

UniProt Entry: [P10253](#)

Application Information

Molecular Weight: Predicted, 105 kDa; observed, 120,100,75 kDa

Clonality: Rabbit monoclonal antibody

Clone ID: 23GB5480

Species Reactivity: Human, mouse, rat

Applications Tested: Western blotting (WB), flow cytometry (FCM), immunocytochemistry (IC)

Immunogen

A synthesized peptide derived from human GAA

Isotype

Rabbit IgG

Storage Buffer

Supplied in PBS (pH 7.4) containing 50% glycerol, and 0.02% sodium azide.

Storage

Store at -20 °C for one year.

Recommended Dilutions

Western Blotting (WB): 1:1,000-1:5,000

Flow Cytometry (FCM): 1:2,000

Immunocytochemistry (IC): 1:100-1:1,000

Note: This product is for research use only.

SUPPORT

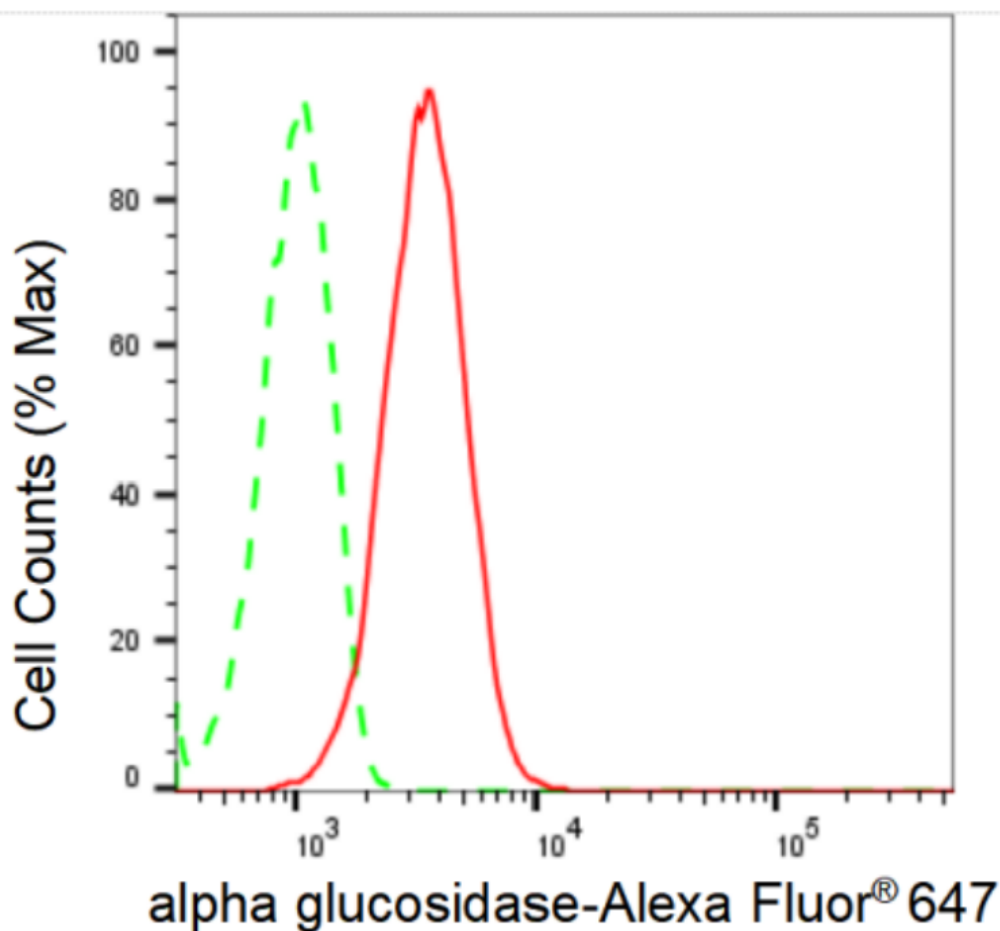
SUPPORT@GENUINBIOTECH.COM
TEL: +1-540-855-7041

ORDERS

SALES@GENUINBIOTECH.COM
FAX: +1-540-855-7041

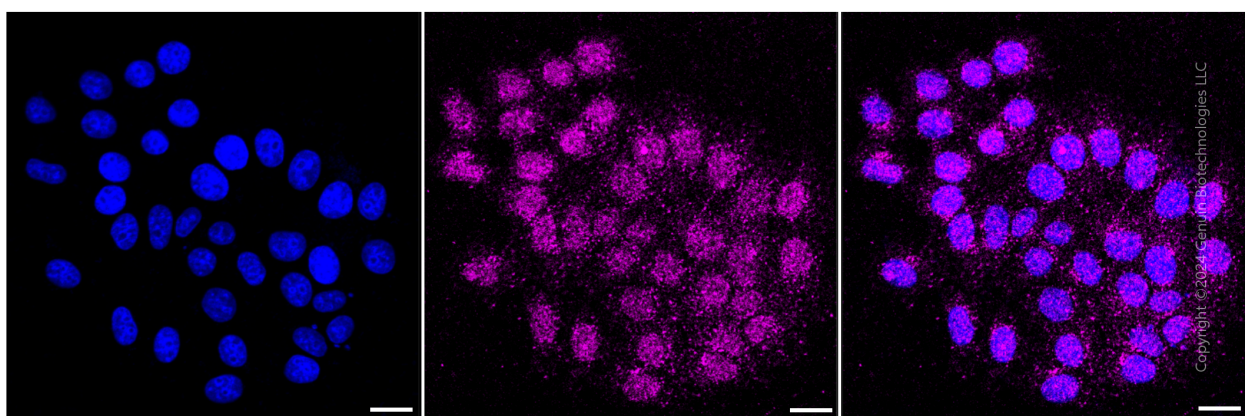
WWW.GENUINBIOTECH.COM

Validation Data



Copyright ©2024 Genuin Biotechnologies LLC

Flow cytometric analysis of alpha glucosidase expression in HepG2 cells using alpha glucosidase antibody (Cat#1996, 1:2,000). Green, isotype control; red, alpha glucosidase.



Copyright ©2024 Genuin Biotechnologies LLC

Immunocytochemical staining of HepG2 cells with anti-alpha glucosidase antibody (Cat#1996, 1:1,000). Nuclei were stained blue with DAPI; alpha glucosidase was stained magenta with Alexa Fluor® 647. Images were taken using Leica stellaris 5. Protein abundance based on laser Intensity and smart gain: Low. Scale bar: 20 µm.

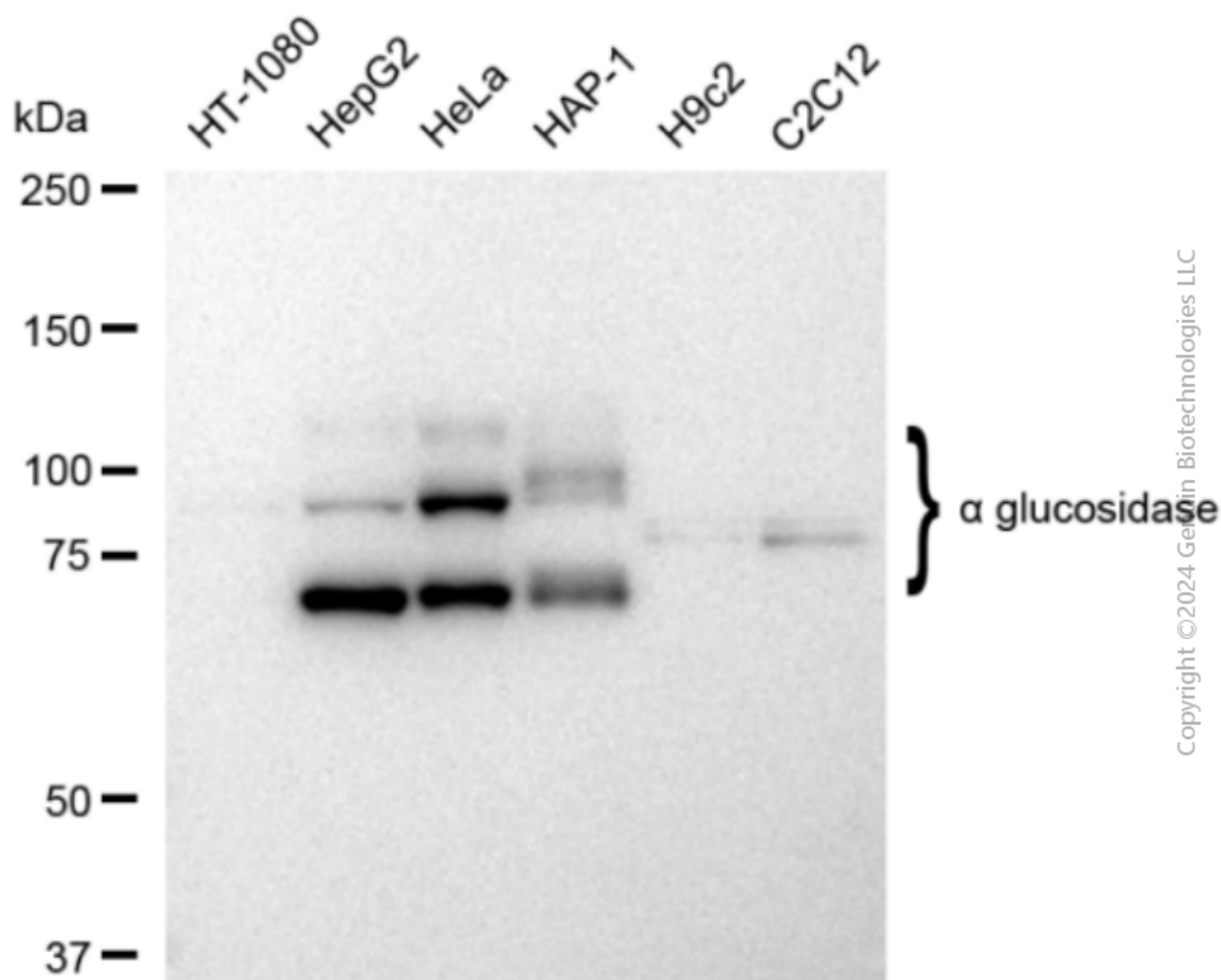
SUPPORT

SUPPORT@GENUINBIOTECH.COM
TEL: +1-540-855-7041

ORDERS

SALES@GENUINBIOTECH.COM
FAX: +1-540-855-7041

WWW.GENUINBIOTECH.COM



Western blotting analysis using anti-alpha glucosidase antibody (Cat#1996). Total cell lysates (30 µg) from various cell lines were loaded and separated by SDS-PAGE. The blot was incubated with anti-alpha glucosidase antibody (Cat#1996, 1:5,000) and HRP-conjugated goat anti-rabbit secondary antibody (Cat#201, 1:20,000) respectively. Image was developed using FeQ™ ECL Substrate Kit (Cat#226).