

Anti-GAB1 Recombinant Rabbit Monoclonal Antibody



Catalog #: 1997

Aliases

GAB1; GRB2 Associated Binding Protein 1; Growth Factor Receptor Bound Protein 2-Associated Protein 1; GRB2-Associated-Binding Protein 1; Deafness, Autosomal Recessive 26; GRB2-Associated Binder 1; DFNB26; Symbol Withdrawn, See GAB1

Background

Gene Name: GAB1

NCBI Gene Entry: [2549](#)

UniProt Entry: [Q13480](#)

Application Information

Molecular Weight: Predicted, 77 kDa; observed, 110 kDa

Clonality: Rabbit monoclonal antibody

Clone ID: 23GB5485

Species Reactivity: Human, mouse, rat

Applications Tested: Western blotting (WB), flow cytometry (FCM), immunocytochemistry (IC)

Immunogen

A synthesized peptide derived from human GAB1

Isotype

Rabbit IgG

Storage Buffer

Supplied in PBS (pH 7.4) containing 50% glycerol, and 0.02% sodium azide.

Storage

Store at -20 °C for one year.

Recommended Dilutions

Western Blotting (WB): 1:1,000-1:5,000

Flow Cytometry (FCM): 1:2,000

Immunocytochemistry (IC): 1:100-1:1,000

Note: This product is for research use only.

SUPPORT

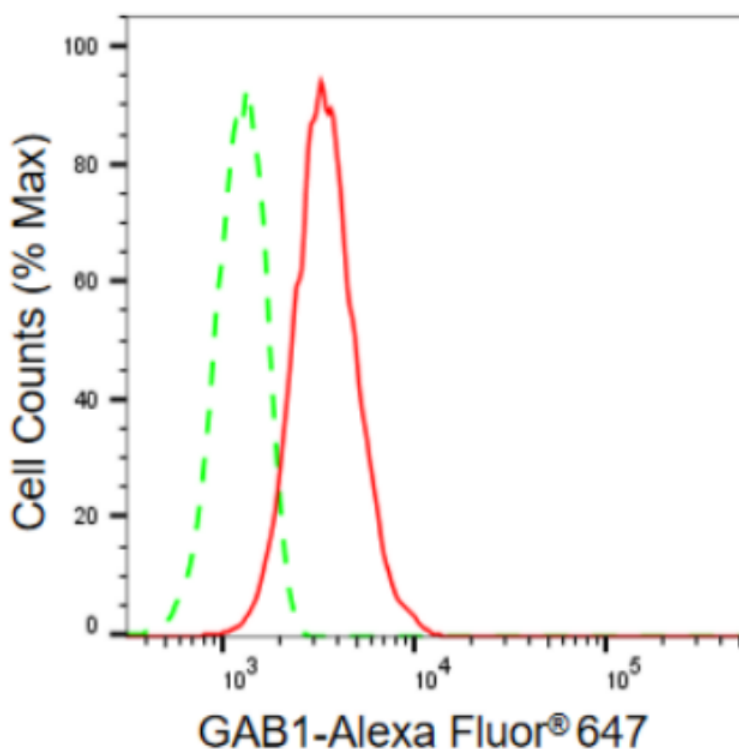
SUPPORT@GENUINBIOTECH.COM
TEL: +1-540-855-7041

ORDERS

SALES@GENUINBIOTECH.COM
FAX: +1-540-855-7041

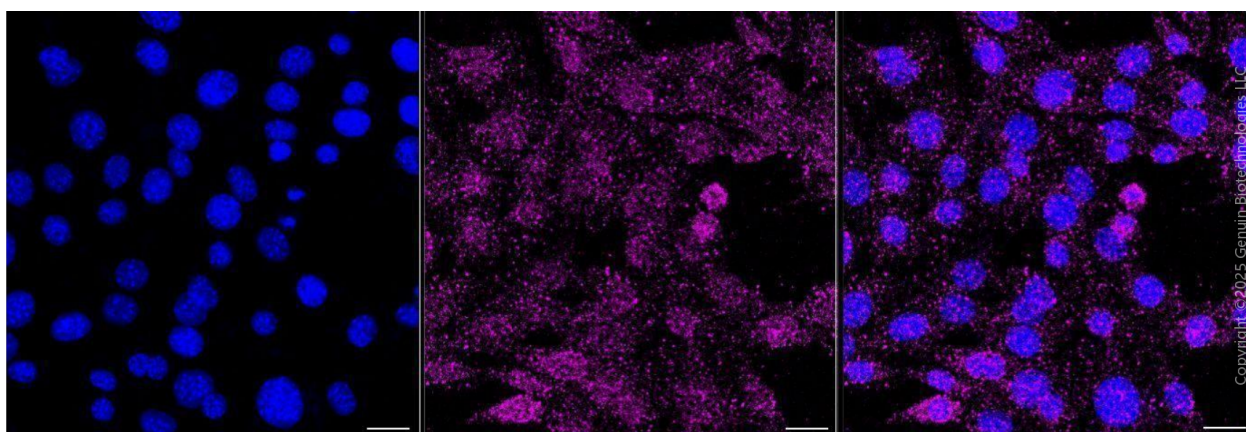
WWW.GENUINBIOTECH.COM

Validation Data



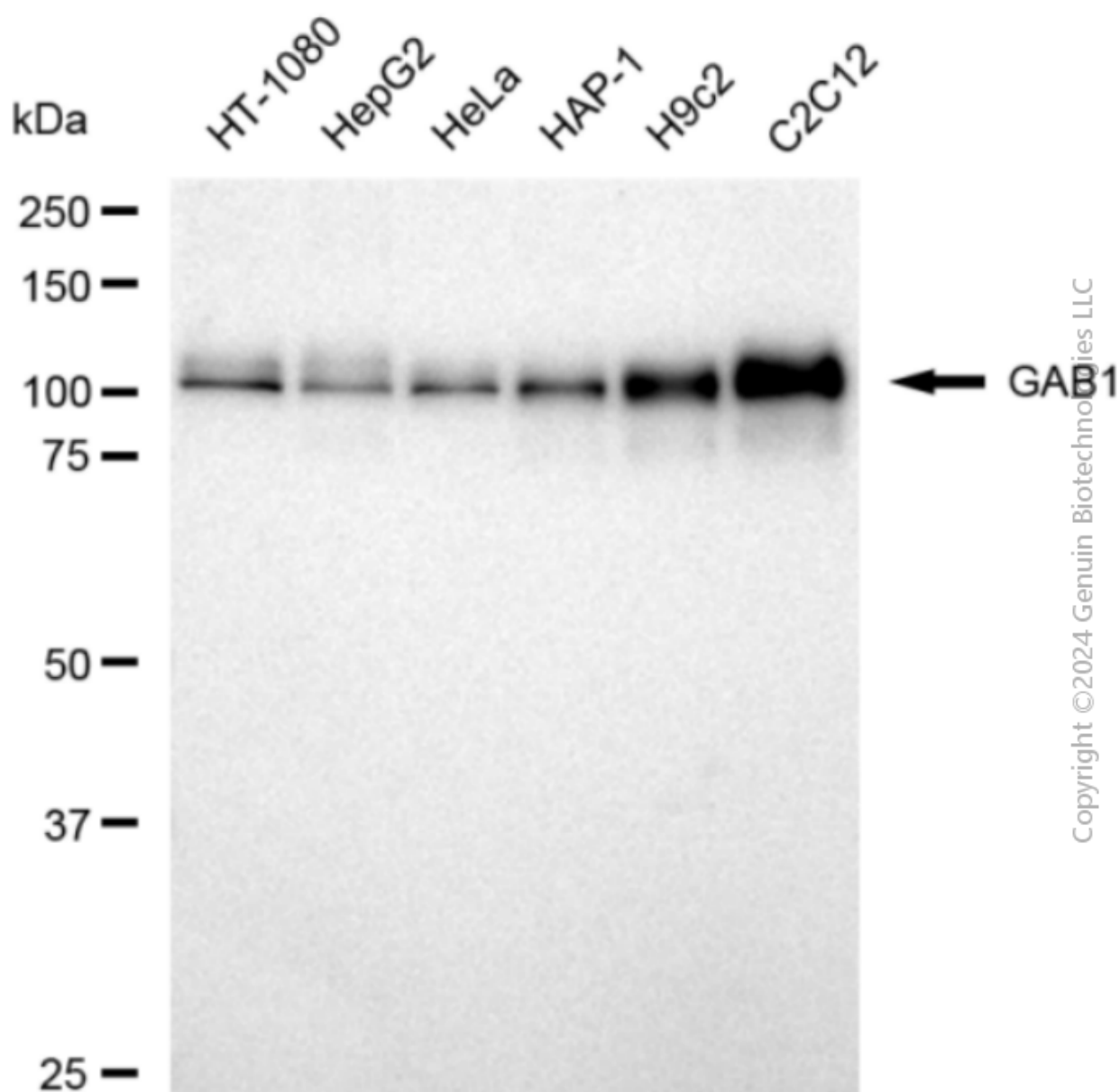
Copyright ©2024 Genuin Biotechnologies LLC

Flow cytometric analysis of GAB1 expression in C2C12 cells using GAB1 antibody (Cat#1997, 1:2,000). Green, isotype control; red, GAB1.



Copyright ©2025 Genuin Biotechnologies LLC

Immunocytochemical staining of C2C12 cells with anti-GAB1 antibody (Cat#1997, 1:1,000). Nuclei were stained blue with DAPI; GAB1 was stained magenta with Alexa Fluor® 647. Images were taken using Leica stellaris 5. Protein abundance based on laser Intensity and smart gain: Low. Scale bar, 20 μm.



Western blotting analysis using anti-GAB1 antibody (Cat#1997). Total cell lysates (30 µg) from various cell lines were loaded and separated by SDS-PAGE. The blot was incubated with anti-GAB1 antibody (Cat#1997, 1:5,000) and HRP-conjugated goat anti-rabbit secondary antibody (Cat#201, 1:20,000) respectively. Image was developed using FeQ™ ECL Substrate Kit (Cat#226).